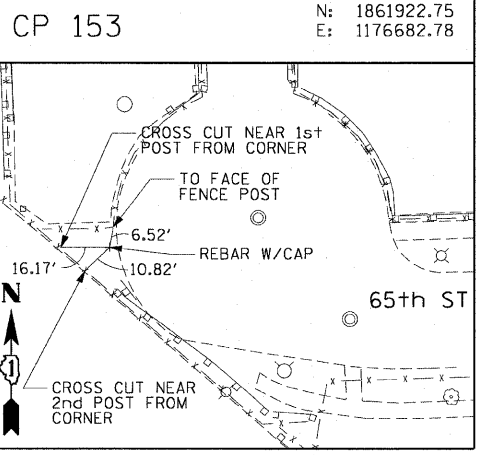
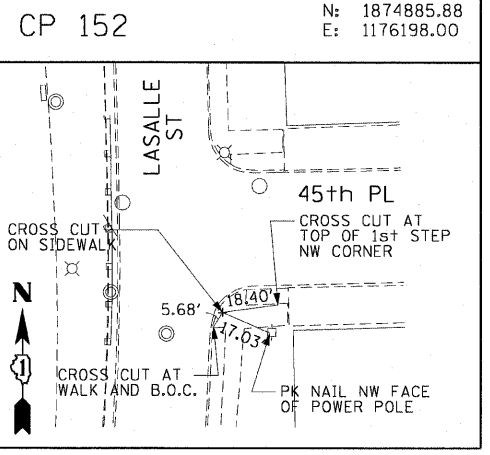
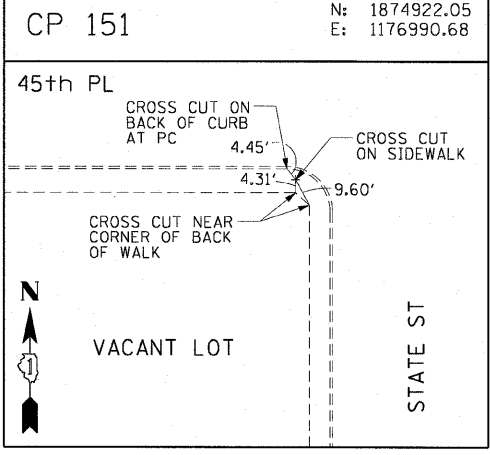
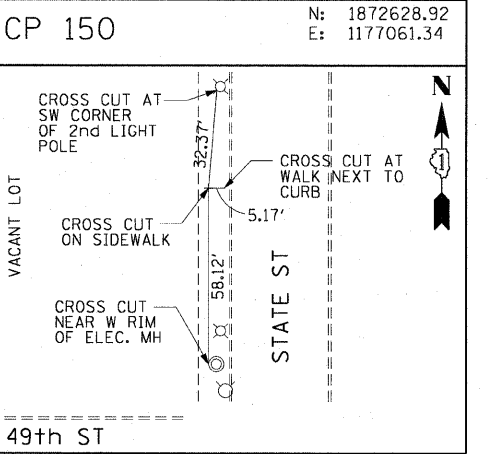
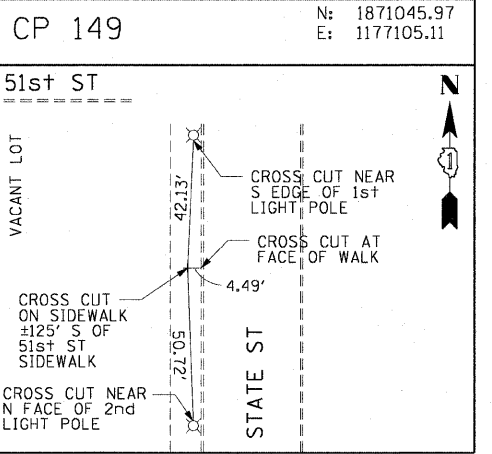
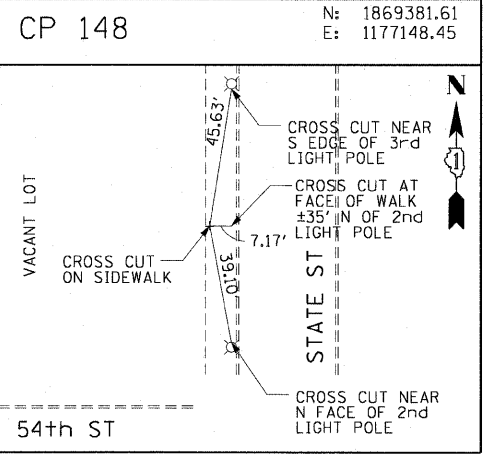
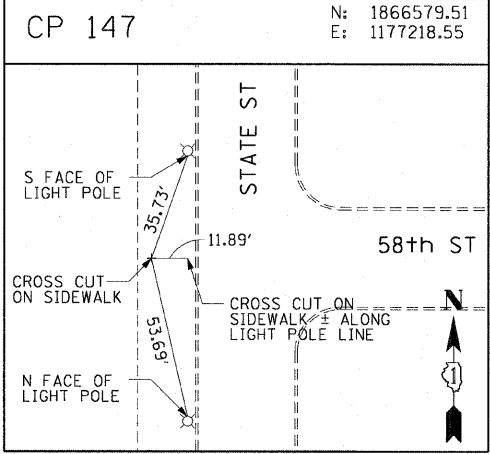
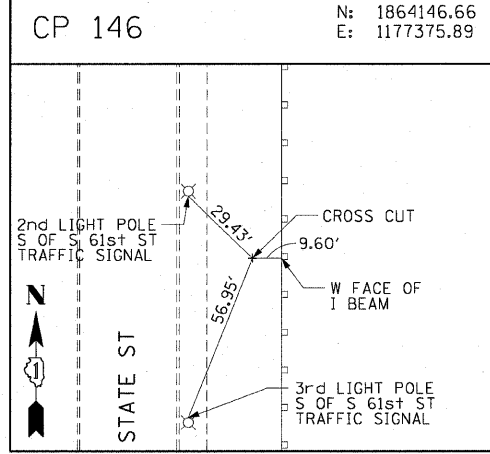
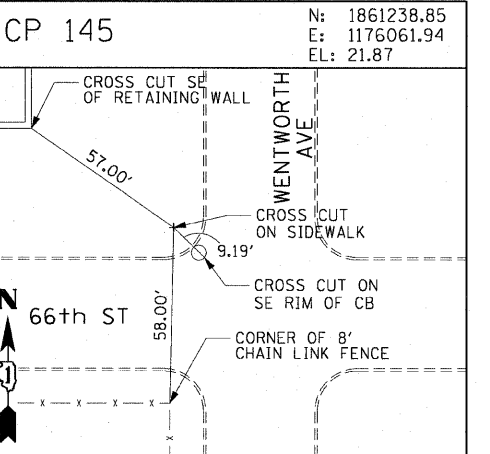
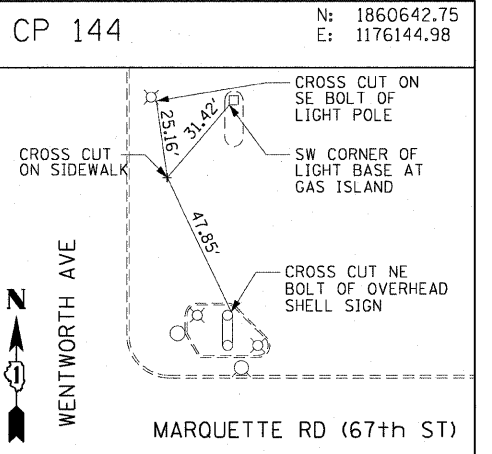
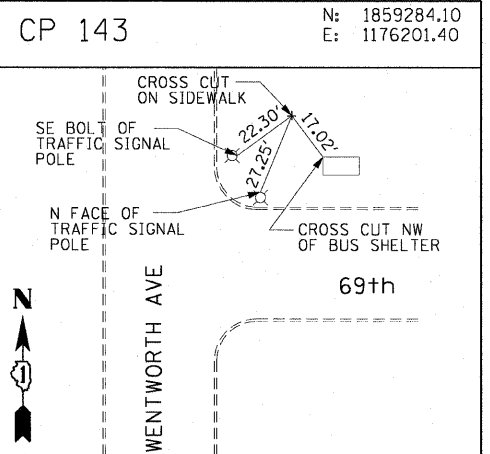
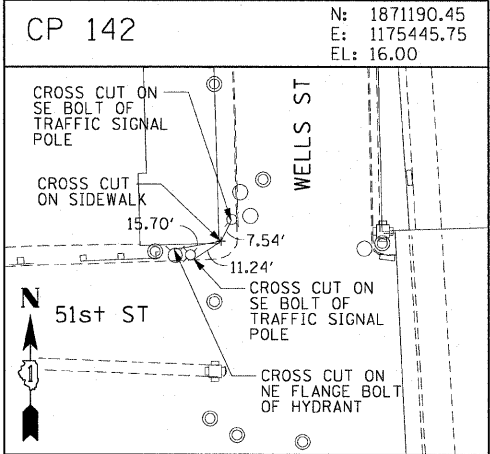
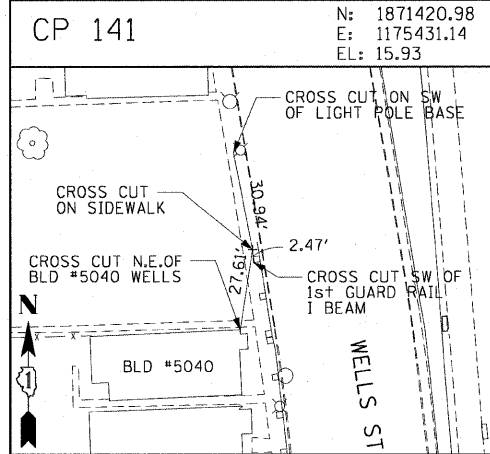
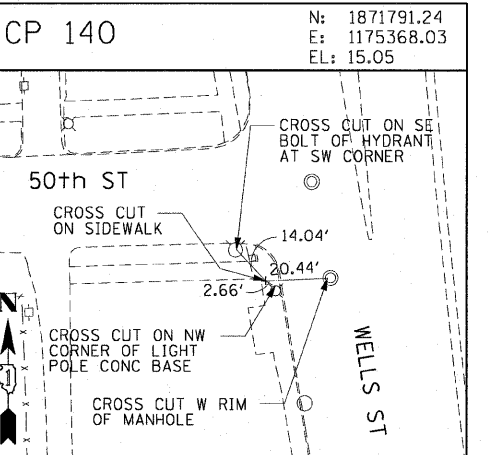
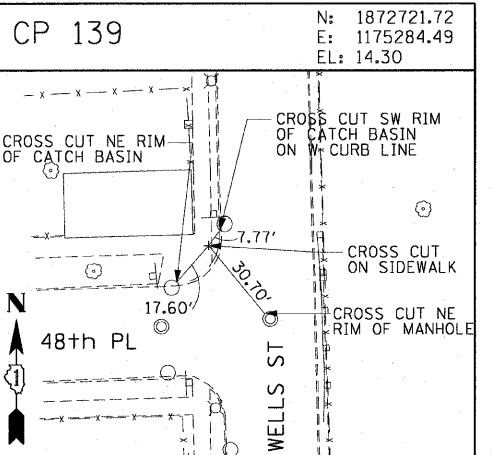
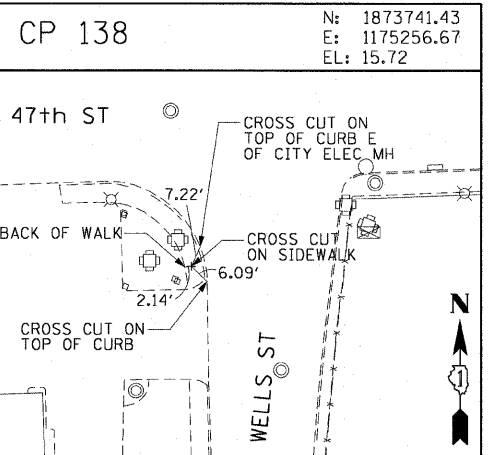
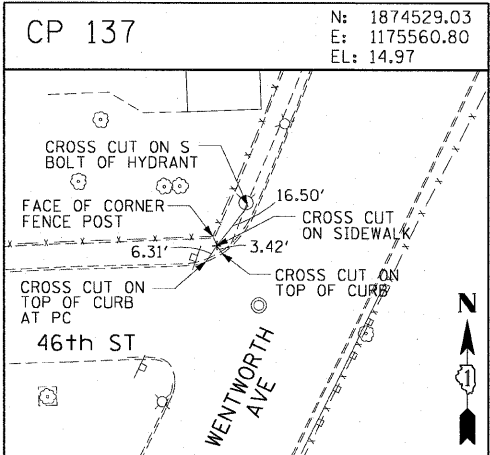
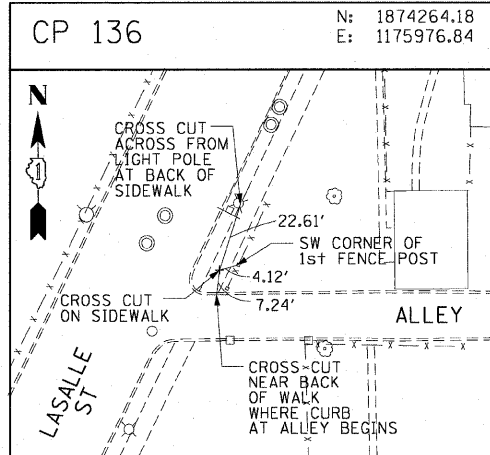


F.A.I. RTE. 90/94	SECTION	COUNTY	TOTAL SHEETS	SHEET NO.
		COOK	45	14
STA.		TO STA.		
FED. ROAD DIST. NO. 1		ILLINOIS FED. AID PROJECT		
		•(1818, 1919, 1919.15) I-11		
				62983



REVISIONS	
NAME	DATE

ILLINOIS DEPARTMENT OF TRANSPORTATION
 F.A.I. 90/94 (DAN RYAN EXPRESSWAY)
 71ST ST TO 63RD ST (NORTHBOUND KNEE WALLS)
SURVEY TIES AND CONTROL POINTS
 SCALE: 1"=30'
 DATE: JANUARY 14, 2009
 DRAWN BY: MRK
 CHECKED BY: JAL



1/13/2009 11:59:32 AM \\usctgrf\p207\p40468\p40468\civil\28-knee-wall\Fence\stf\control\21021210.32.dwg