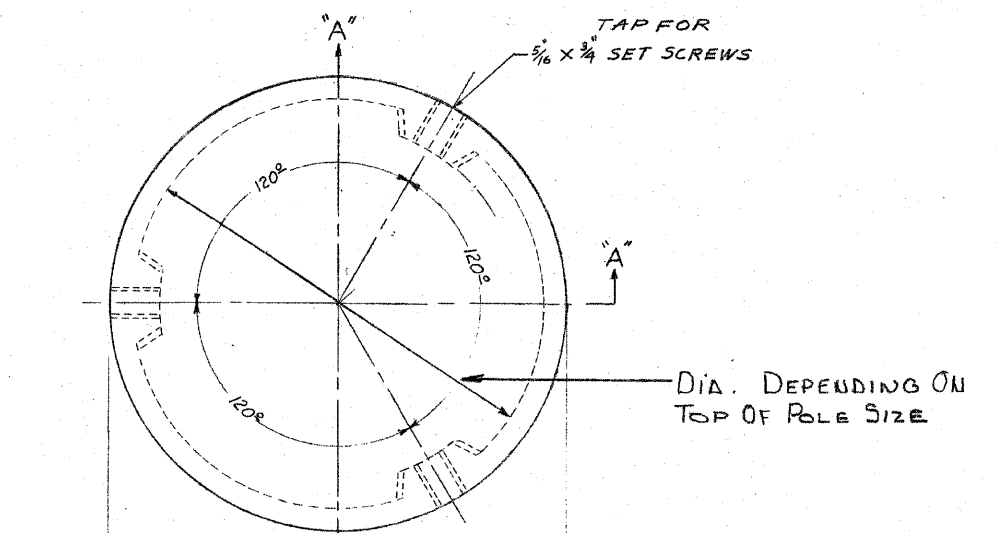


F.A.I. RTE.	SECTION	COUNTY	TOTAL SHEETS	SHEET NO.
90/94		COOK	45	33
STA.		TO STA.		
FED. ROAD DIST. NO. 1		ILLINOIS FED. AID PROJECT		
(1818, 1919, 1919.15) 1-11				62983

NOTES:

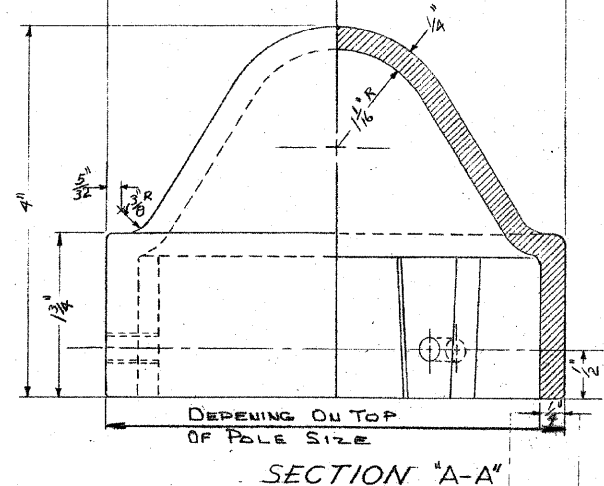
- THIS IS A STANDARD DRAWING MADE BY THE CITY OF CHICAGO, DEPARTMENT OF STREETS AND SANITATION, BUREAU OF ELECTRICITY. THIS DRAWING IS INCLUDED FOR THE CONVENIENCE OF THE CONTRACTOR.



MATERIAL - CAST IRON OR
CAST ALUMINUM

NOTES

- 3-3/8-16X3/4 STAINLESS STEEL SET SCREWS TO BE FURNISHED WITH EACH TOP
- FOR USE ON THE FOLLOWING SIZE POLES:
 27'-6" - 3 AND 7 GAUGE
 29'-6" - 3 AND 7 GAUGE
 32'-6" - 3 AND 7 GAUGE
 34'-6" - 3 AND 7 GAUGE 10" & 12 1/2" BASE DIAM.



CAST POLETOP FOR STEEL POLE

REVISED	CITY OF CHICAGO DEPT. OF STREETS AND SANITATION BUREAU OF ELECTRICITY DIVISION OF ELECTRICAL ENGINEERING		
A 2-13-85	DRAWN	CHECKED	ENGINEER
B	<i>D. NELLA</i>	<i>A. D. Kelly</i>	<i>A. D. Kelly</i>
C	<i>John P. Kelly</i>		
D			
E			11420-A
F			
G			

SIZE 16" X 21" NOT TO SCALE DATE 10-9-89

AECOM

REVISIONS	
NAME	DATE

ILLINOIS DEPARTMENT OF TRANSPORTATION
F.A.I. 90/94 (DAN RYAN EXPRESSWAY)
71ST ST TO 63RD ST (NORTHBOUND KNEE WALLS)

STANDARD BOE DETAILS

SCALE: NOT TO SCALE
DATE: JANUARY 14, 2009

DRAWN BY: HAR
CHECKED BY: JPC