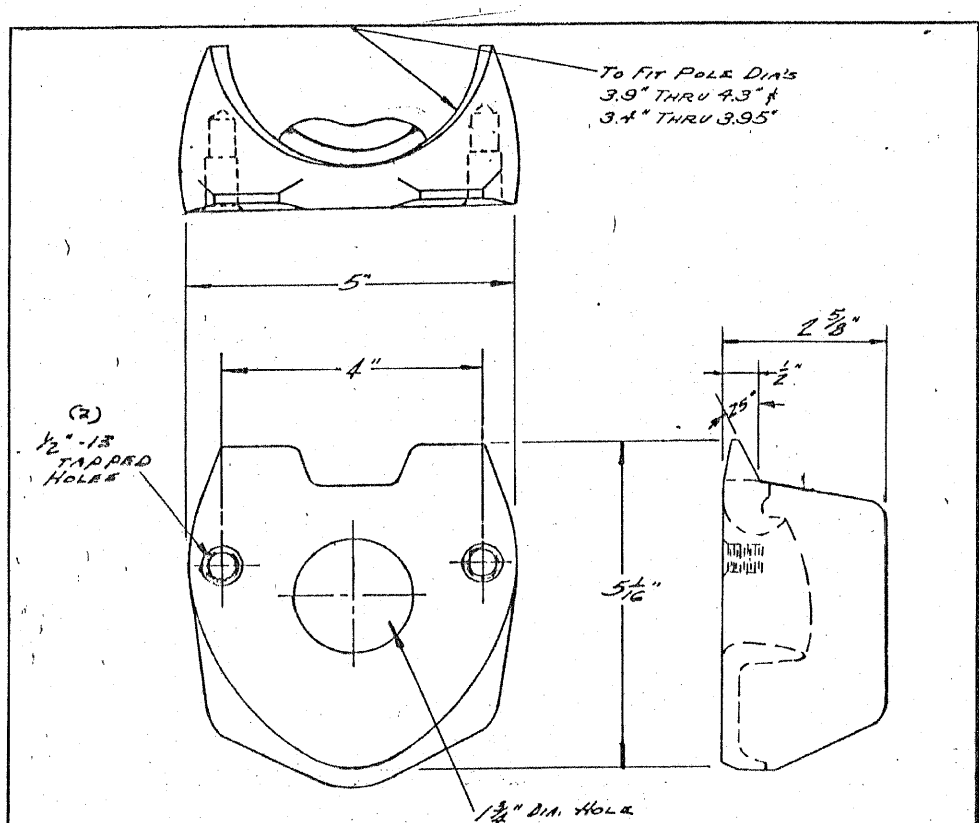


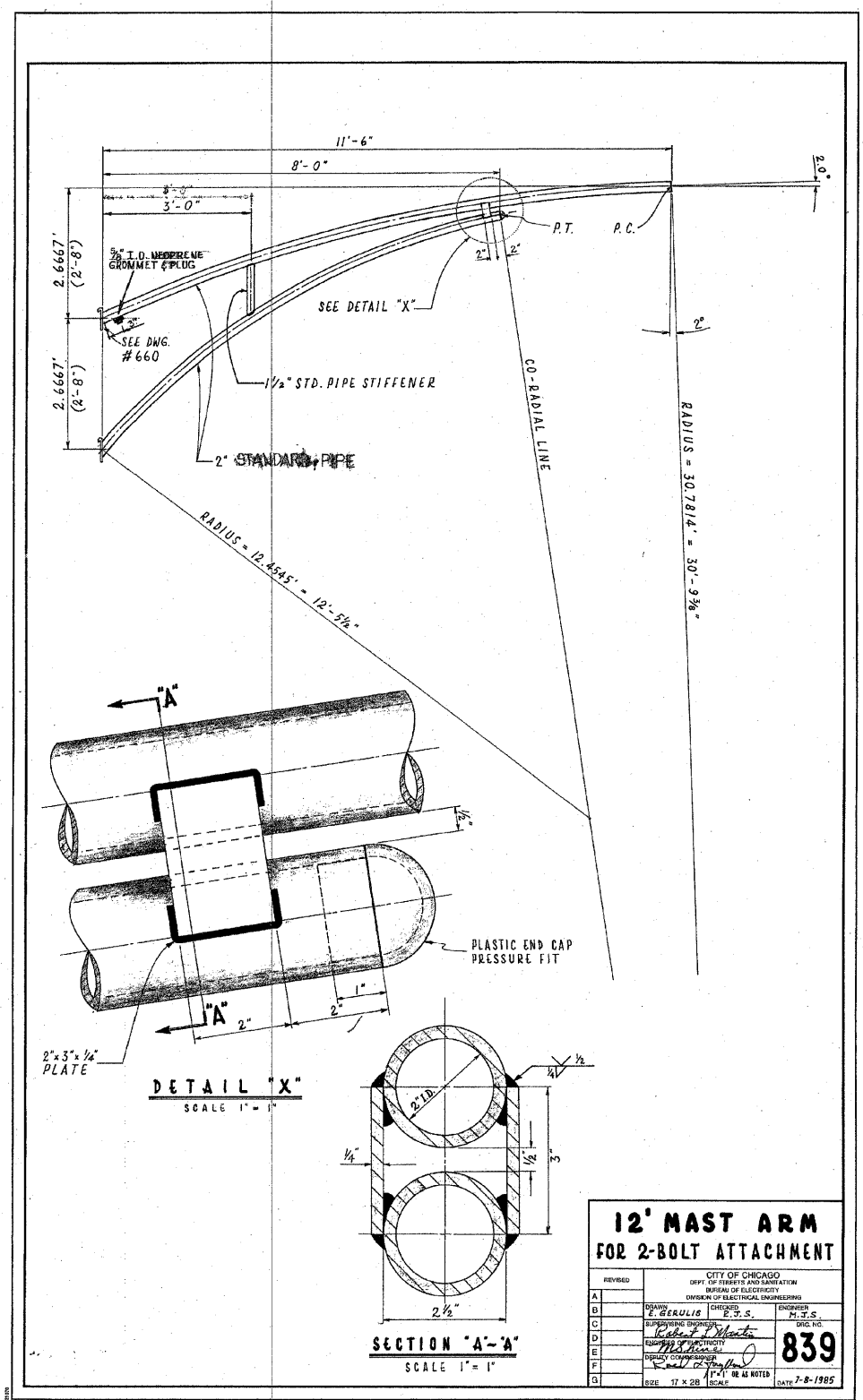
**NOTES:**

- THIS IS A STANDARD DRAWING MADE BY THE CITY OF CHICAGO, DEPARTMENT OF STREETS AND SANITATION, BUREAU OF ELECTRICITY. THIS DRAWING IS INCLUDED FOR THE CONVENIENCE OF THE CONTRACTOR.



**MATERIAL: CAST STEEL**

A J.O.C. MATERIAL NOTE ADDED.	
2 BOLT MAST ARM ATTACHMENT POLE PLATE DETAILS	
<b>CITY OF CHICAGO</b> DEPT. OF STREETS AND SANITATION DIVISION OF ELECTRICAL ENGINEERING	
REVISED	ENGINEER
A 5-27-76	J. BORE
B	J. BORE
C	J. BORE
D	J. BORE
E	J. BORE
F	J. BORE
G	J. BORE
DR. NO.	659
SIZE 8 1/2" x 14"	DATE 10-25-66



<b>12' MAST ARM FOR 2-BOLT ATTACHMENT</b>	
REVISED	ENGINEER
A	J. BORE
B	J. BORE
C	J. BORE
D	J. BORE
E	J. BORE
F	J. BORE
G	J. BORE
DR. NO.	839
SIZE 17 x 28	DATE 7-8-1985

**AECOM**

REVISIONS	
NAME	DATE

ILLINOIS DEPARTMENT OF TRANSPORTATION  
F.A.I. 90/94 (DAN RYAN EXPRESSWAY)  
71ST ST TO 63RD ST (NORTHBOUND KNEE WALLS)

**STANDARD BOE DETAILS**

SCALE: NOT TO SCALE  
DATE: JANUARY 14, 2009

DRAWN BY: HAR  
CHECKED BY: JPC