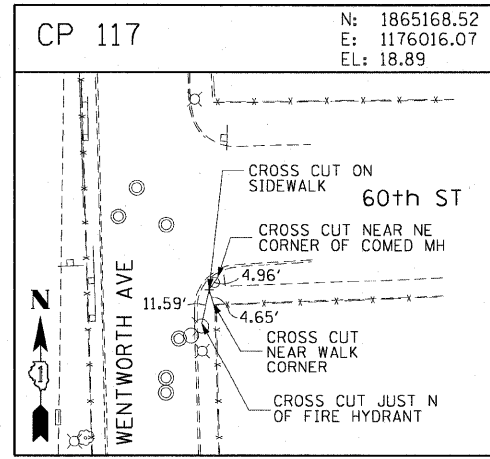
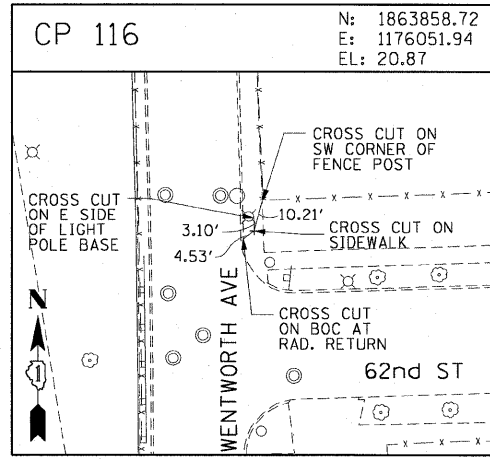
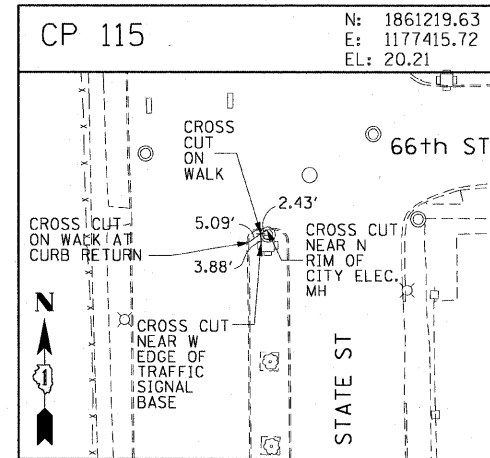
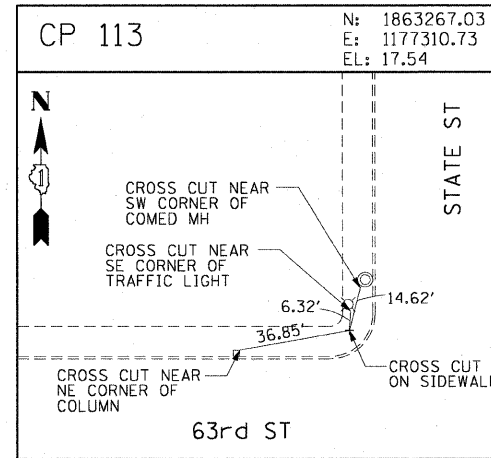
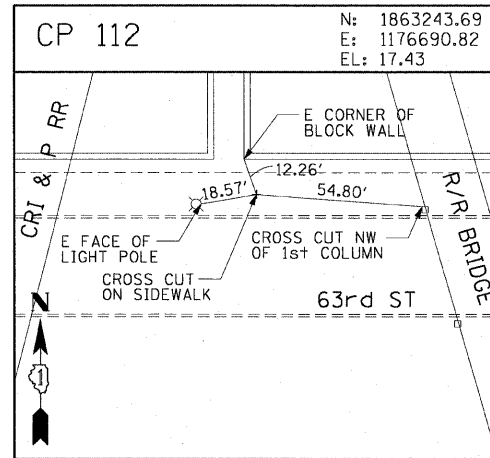
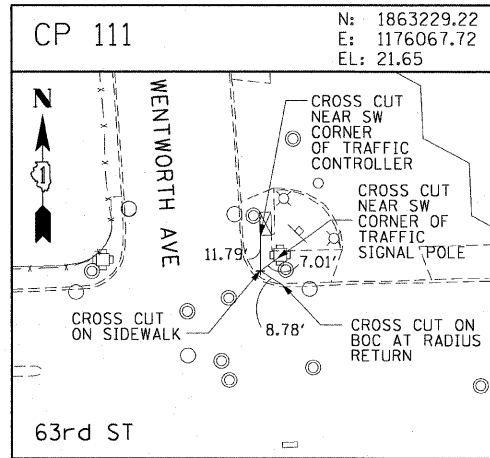
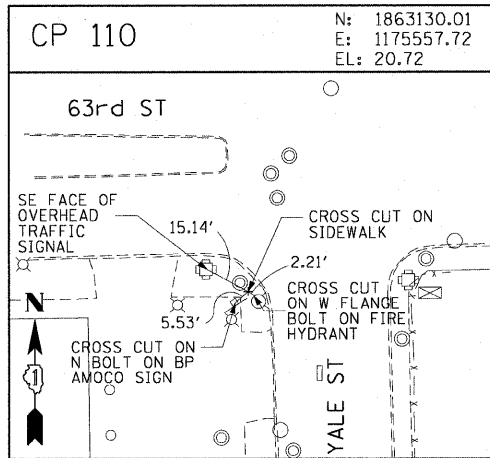
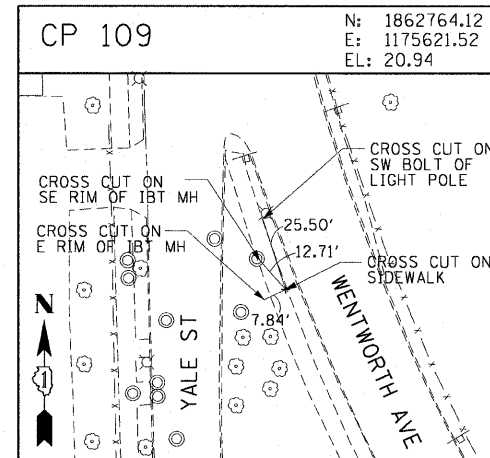
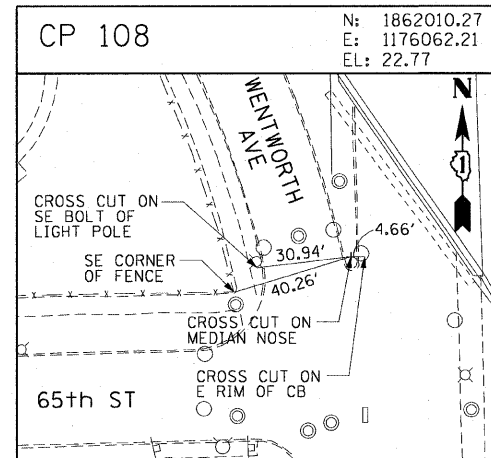
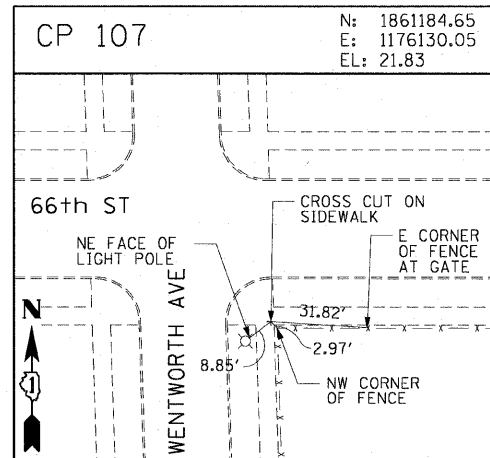
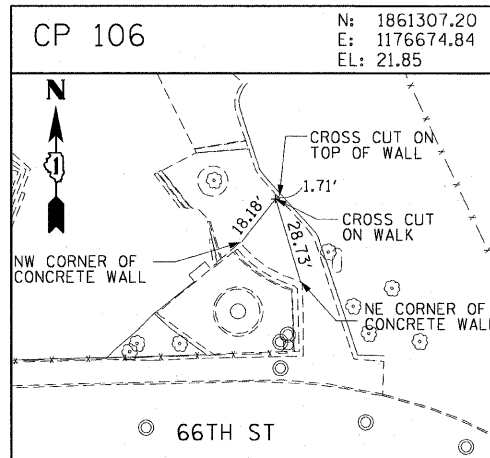
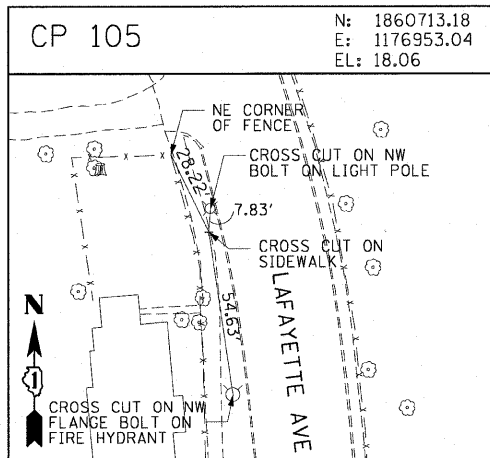
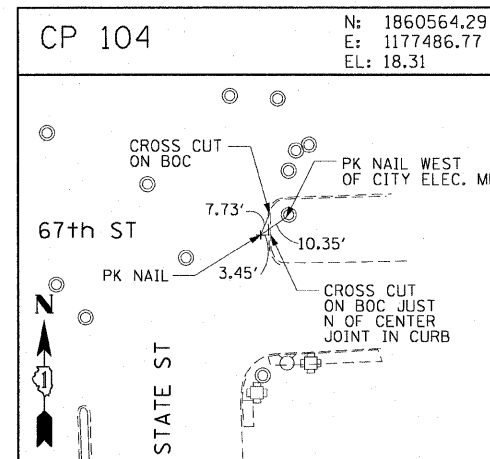
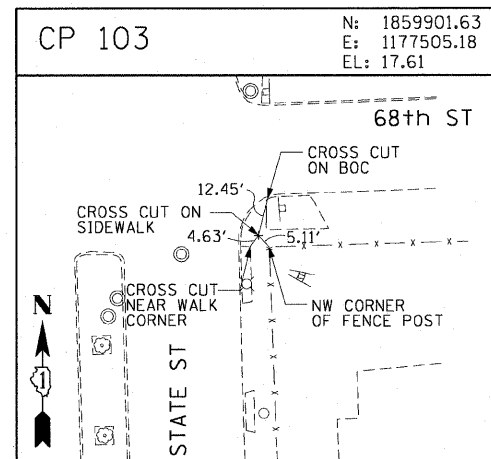
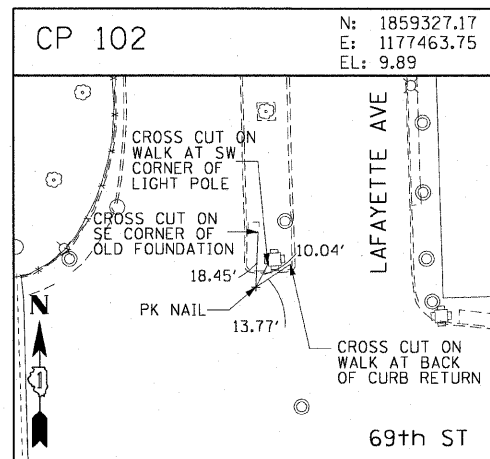
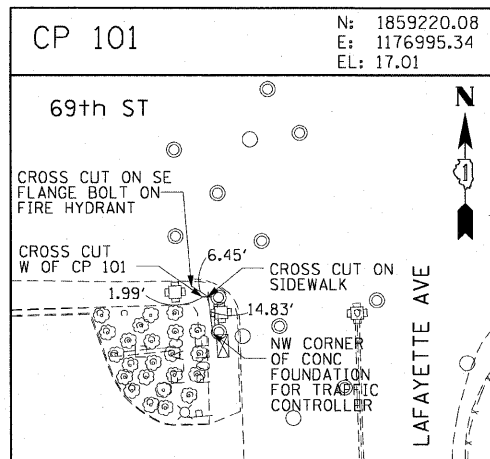
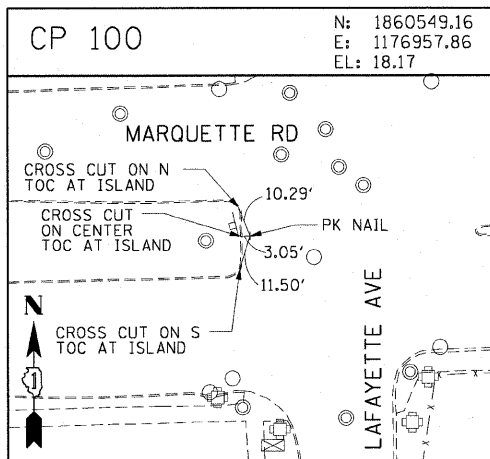


F.A.I. RTE. 90/94	SECTION	COUNTY	TOTAL SHEETS	SHEET NO.
		COOK	31	12
STA.		TO STA.		
FED. ROAD DIST. NO. 1		ILLINOIS FED. AID PROJECT		
* (1818, 1919, 1919.15) 1-12		62984		



AECOM

REVISIONS	
NAME	DATE

ILLINOIS DEPARTMENT OF TRANSPORTATION
F.A.I. 90/94 (DAN RYAN EXPRESSWAY)
71ST ST TO 63RD ST (SOUTHBOUND KNEE WALLS)
SURVEY TIES AND CONTROL POINTS

SCALE: 1"=30'
DATE: JANUARY 14, 2009

DRAWN BY: MRK
CHECKED BY: JAL

1/13/2009 2:23:23 PM \\uscbjlf\p207\p40465\p40468\civ\128 tree-wall-fence\gfa\contract 27\bal27\0102a.stb