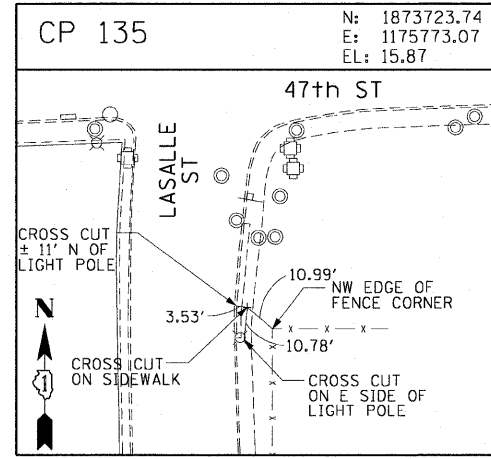
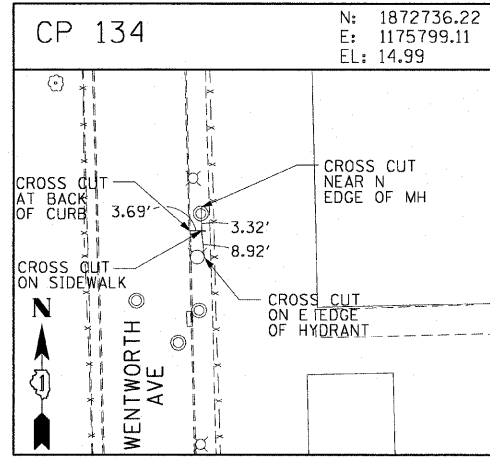
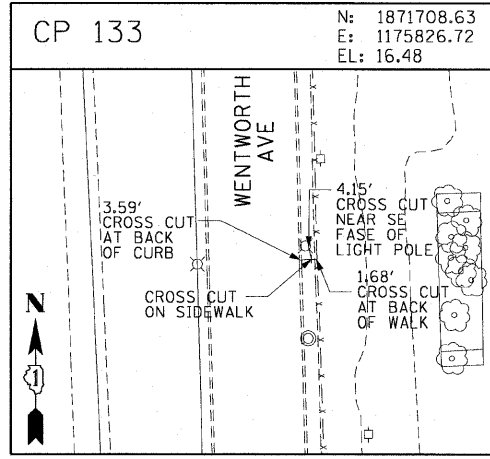
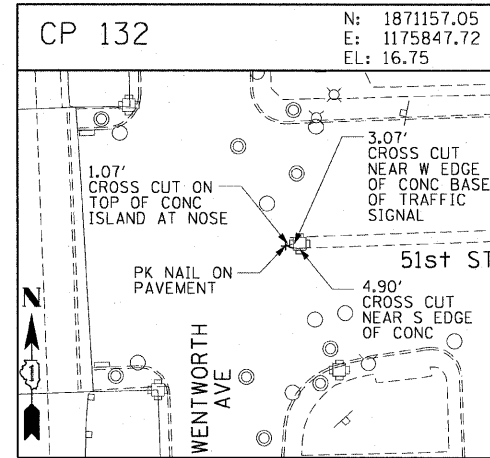
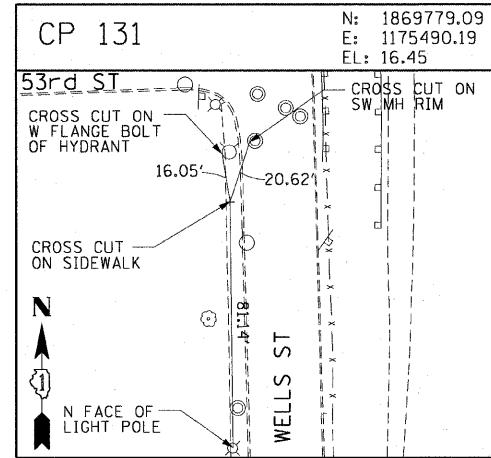
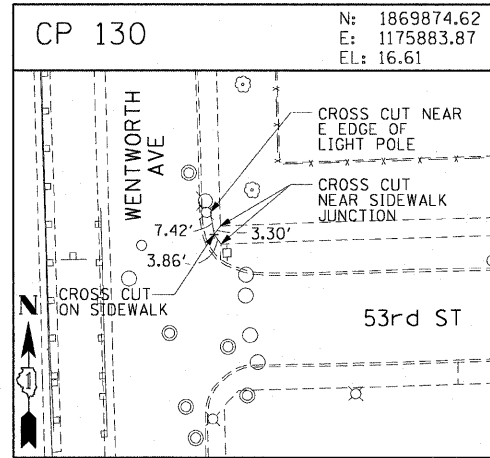
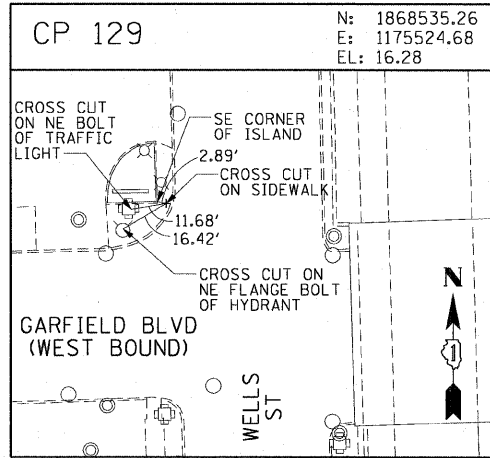
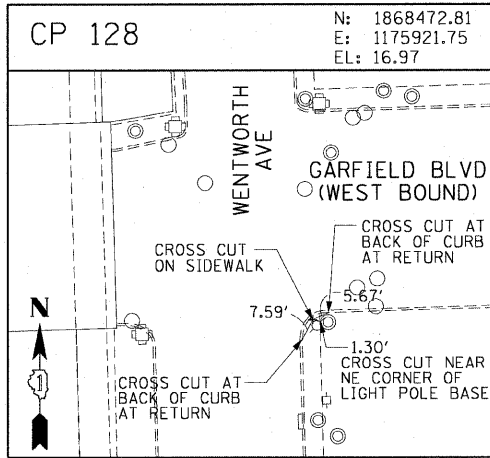
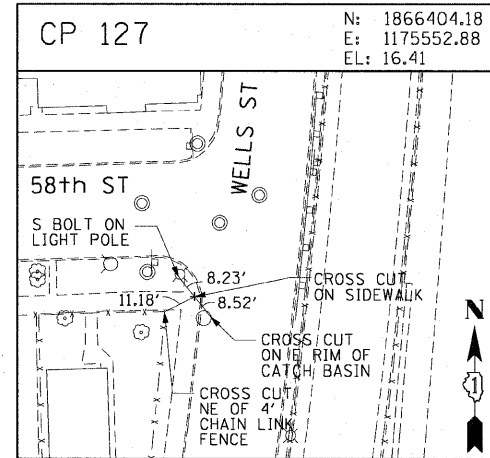
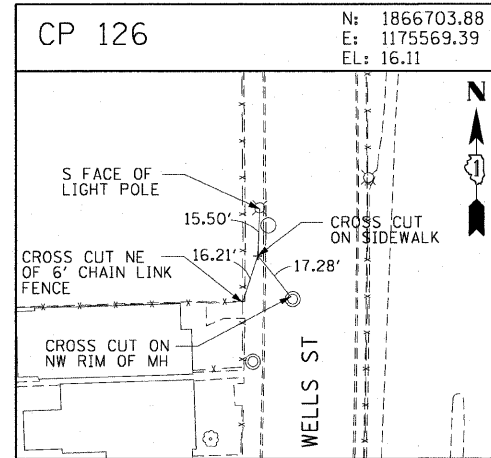
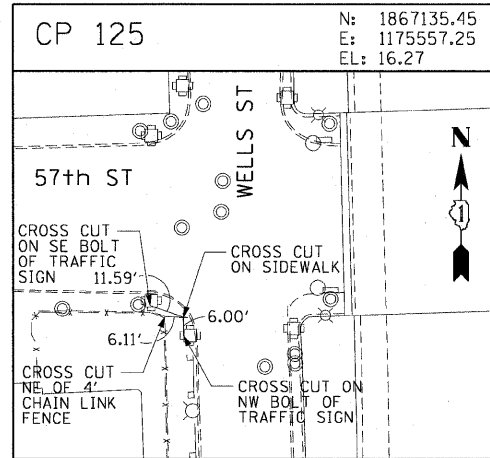
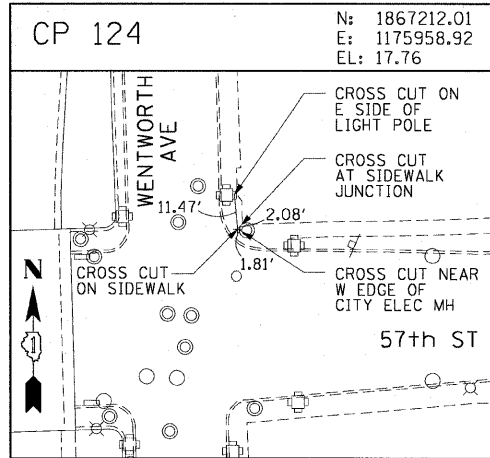
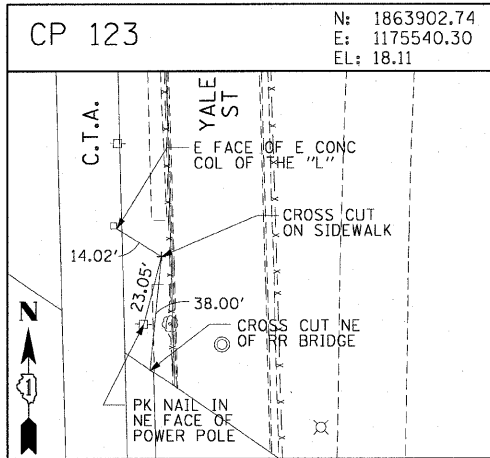
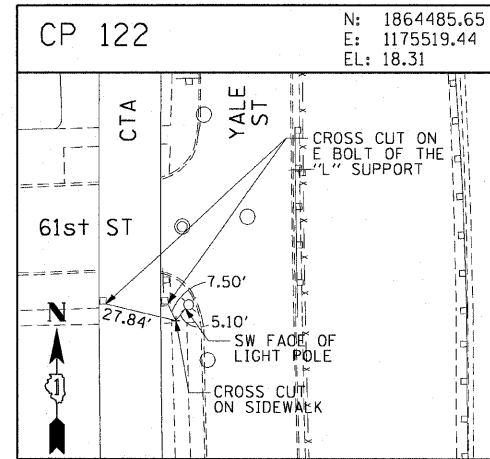
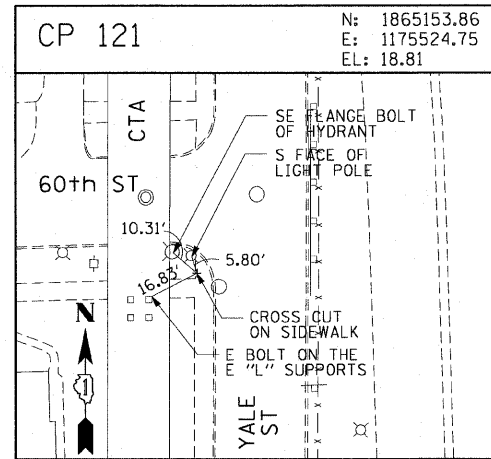
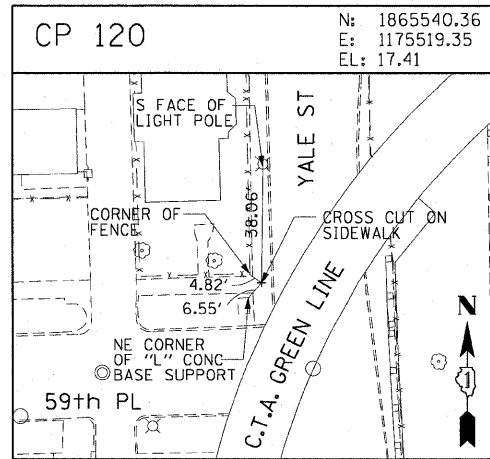
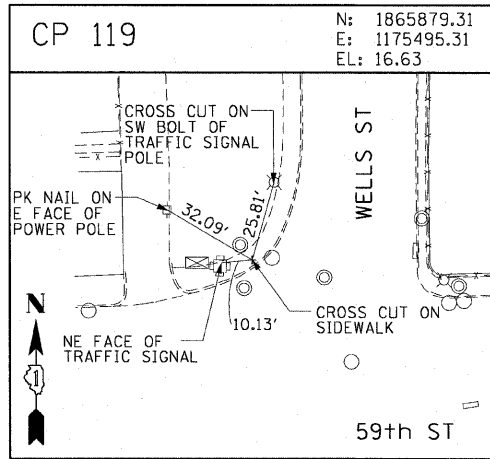
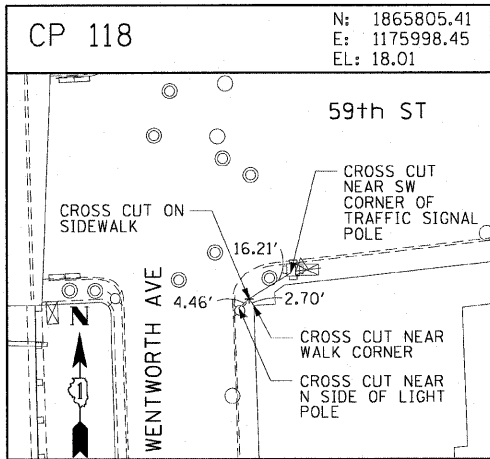


F.A.I. RTE. 90/94	SECTION	COUNTY	TOTAL SHEETS	SHEET NO.
		COOK	31	13
STA.		TO STA.		
FED. ROAD DIST. NO. 1		ILLINOIS FED. AID PROJECT		
* (1818, 1919, 1919.15) 1-12		62984		



AECOM

REVISIONS	
NAME	DATE

ILLINOIS DEPARTMENT OF TRANSPORTATION  
F.A.I. 90/94 (DAN RYAN EXPRESSWAY)  
71ST ST TO 63RD ST (SOUTHBOUND KNEE WALLS)

**SURVEY TIES AND CONTROL POINTS**

SCALE: 1"=30'  
DATE: JANUARY 14, 2009

DRAWN BY: MRK  
CHECKED BY: JAL

1/13/2009 2:23:24 PM \\usccg\p207\440\668\40468\cvt\28-knee-wall\_fencas\contract\_27\DWG\BIO22.sht