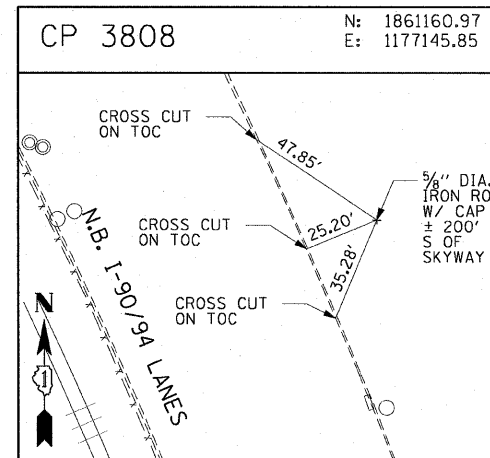
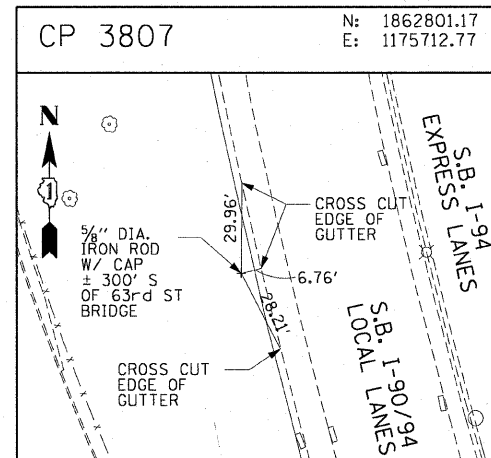
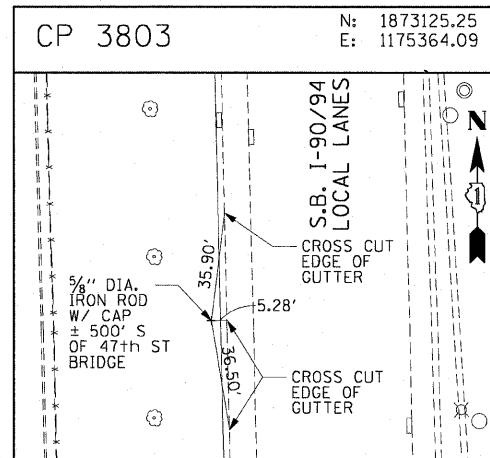
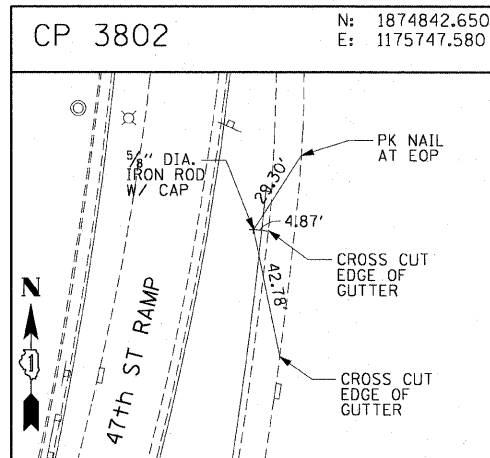
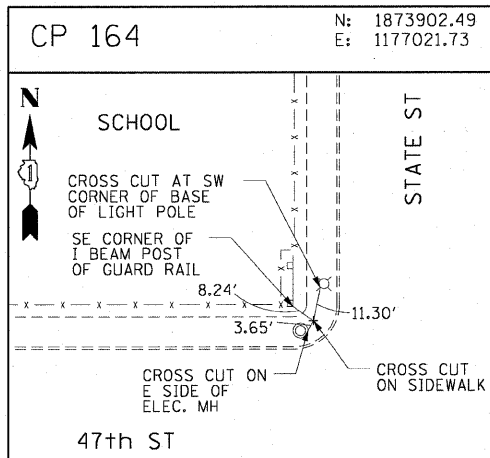
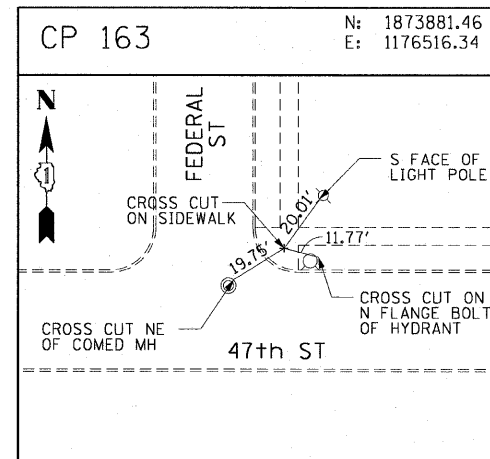
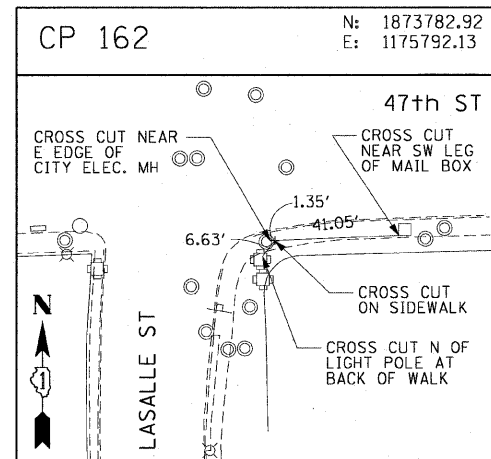
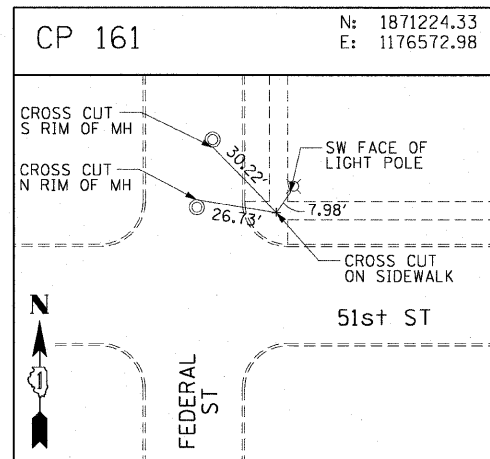
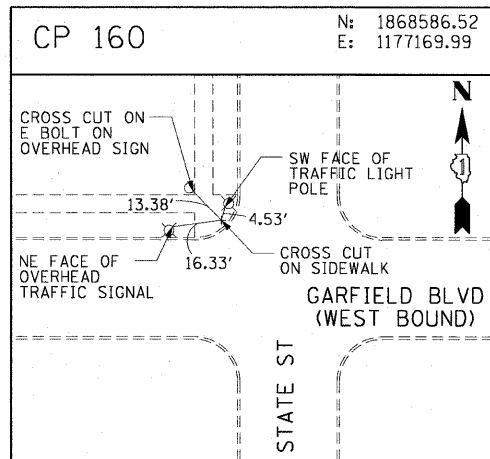
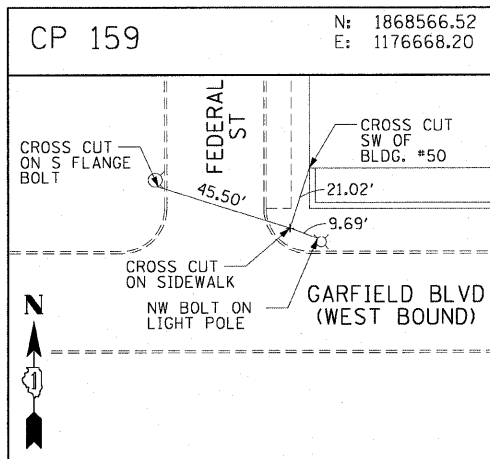
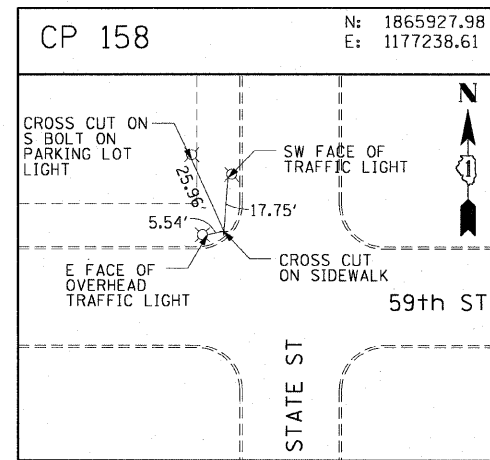
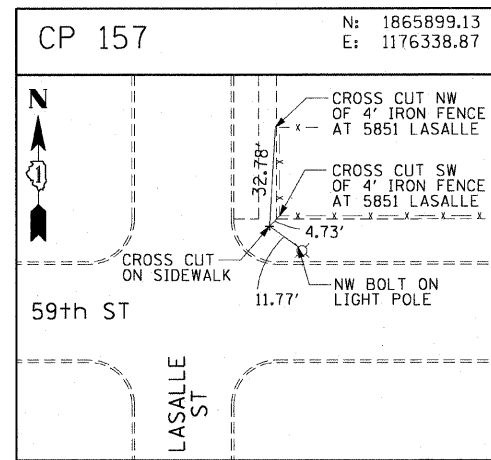
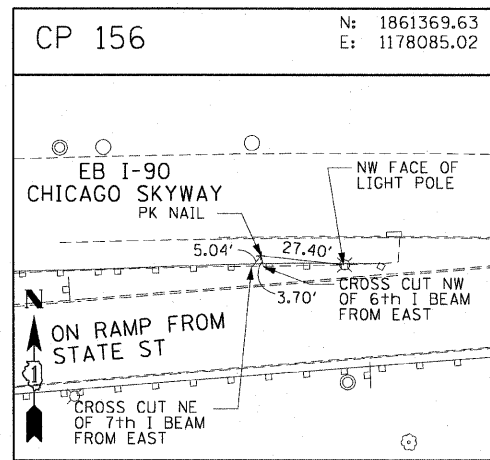
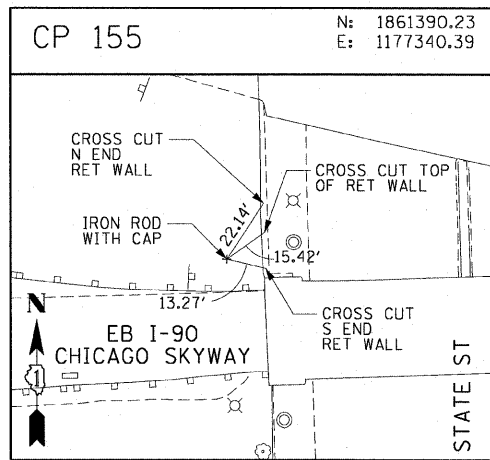
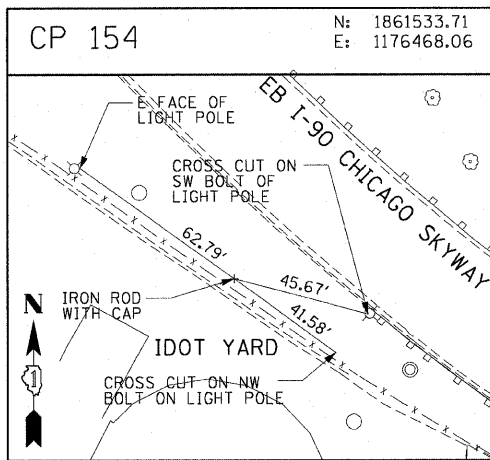


| | | | | |
|----------------------------|---------|---------------------------|--------------|-----------|
| F.A.I. RTE. 90/94 | SECTION | COUNTY | TOTAL SHEETS | SHEET NO. |
| | | COOK | 31 | 15 |
| STA. | | TO STA. | | |
| FED. ROAD DIST. NO. 1 | | ILLINOIS FED. AID PROJECT | | 62984 |
| *1818, 1919, 1919.15) I-12 | | | | |



AECOM

| REVISIONS | |
|-----------|------|
| NAME | DATE |
| | |
| | |
| | |
| | |
| | |
| | |
| | |
| | |
| | |
| | |

ILLINOIS DEPARTMENT OF TRANSPORTATION
F.A.I. 90/94 (DAN RYAN EXPRESSWAY)
71ST ST TO 63RD ST (SOUTHBOUND KNEE WALLS)

SURVEY TIES AND CONTROL POINTS

SCALE: 1"=30'
DATE: JANUARY 14, 2009

DRAWN BY: MRK
CHECKED BY: JAL

\\msb01f207\p40468\p40468\civil\28 tree-wall fence\contract 27\DWG\CP154.dwg 2/23/2009 2:23:24 PM