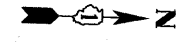


F.A.I. RTE.	SECTION	COUNTY	TOTAL SHEETS	SHEET NO.
90/94		COOK	31	17
STA. 7115+25		TO STA. 7120+00		
FED. ROAD DIST. NO. 1		ILLINOIS FED. AID PROJECT		
*(1818, 1919, 1919.15) 1-12		62984		

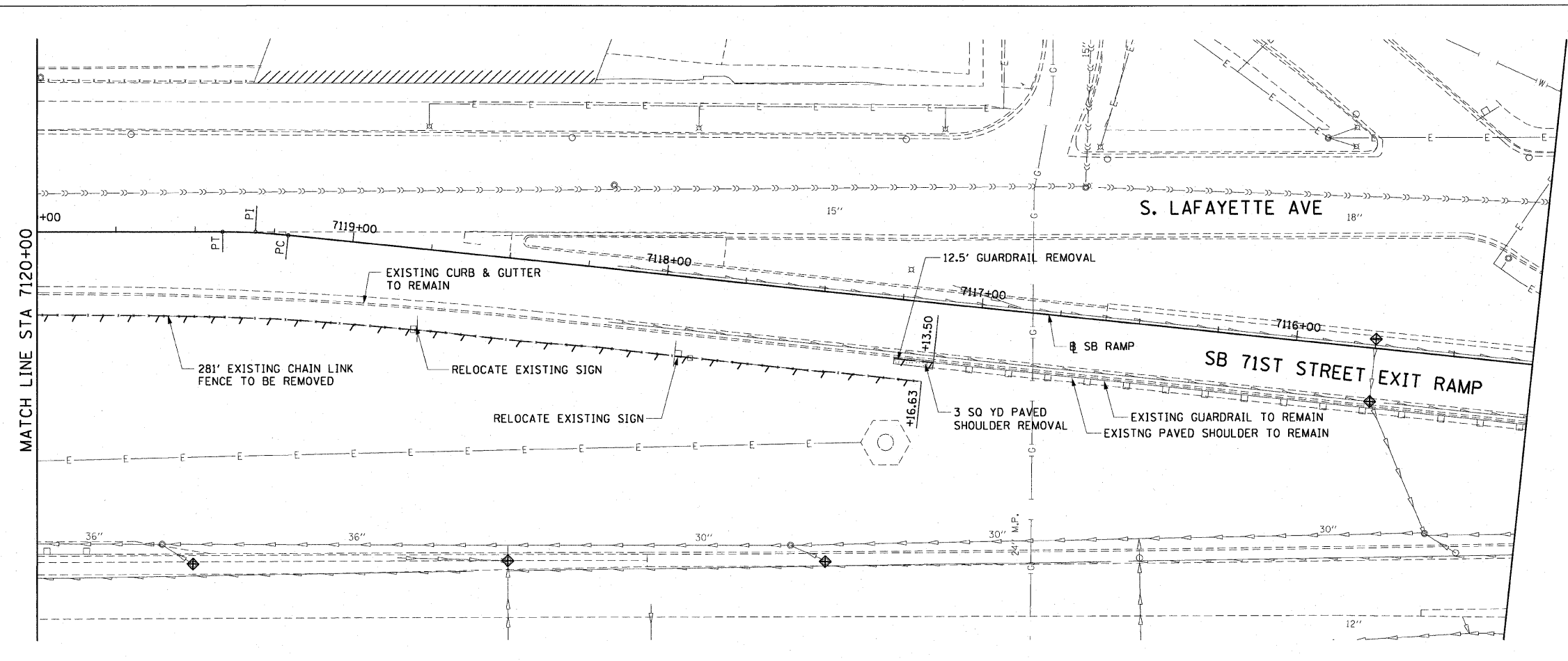


LEGEND:

- AREA REMOVALS
- LINEAR REMOVALS
- TREE REMOVAL (WITH SIZE)
- INLET FILTER

NOTES:

1. THE EXISTING TRAFFIC BARRIER TERMINAL, TYPE 2 SHALL BE REMOVED AND PAID FOR AS GUARDRAIL REMOVAL.
2. ANY DAMAGE TO THE EXISTING GUARDRAIL OR PAVED SHOULDER TO REMAIN, SHALL BE REPLACED AT THE CONTRACTOR'S OWN EXPENSE.

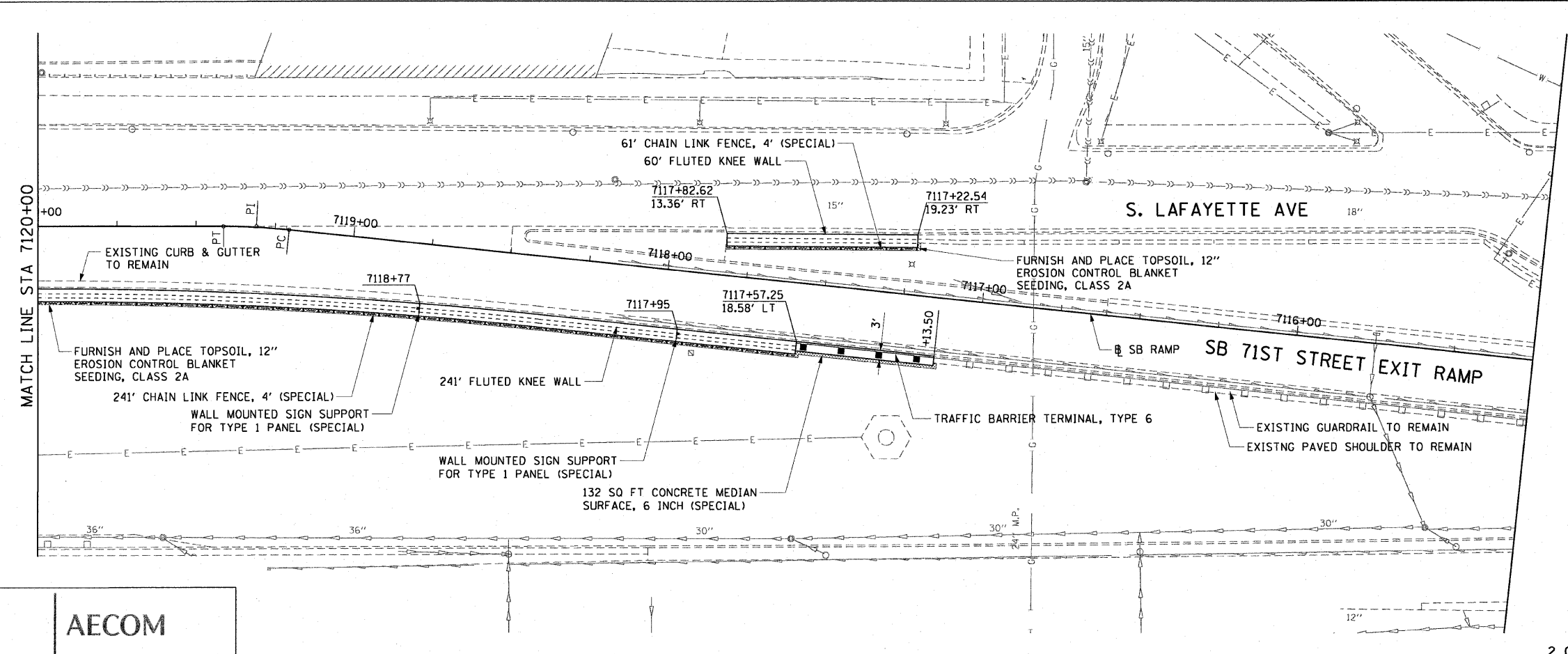


EXISTING CONDITIONS AND REMOVAL  
PROPOSED IMPROVEMENTS



NOTES:

1. SEE STRUCTURAL DETAILS FOR FLUTED KNEE WALL DETAILS.
2. ALL POINT CALLOUTS ARE TAKEN AT THE EDGE OF THE KNEE WALL BASE.
3. SEE ROADWAY DETAILS FOR CONCRETE MEDIAN AND CONCRETE CURB DETAILS.
4. CONNECT THE PROPOSED TRAFFIC BARRIER TERMINAL, TYPE 6 TO THE EXISTING GUARDRAIL AT STATION 7117+13.50.



REVISIONS	
NAME	DATE

ILLINOIS DEPARTMENT OF TRANSPORTATION  
F.A.I. 90/94 (DAN RYAN EXPRESSWAY)  
71ST ST TO 63RD ST (SOUTHBOUND KNEE WALLS)  
EXISTING AND PROPOSED ROADWAY PLANS

SCALE: 1"=20'  
DATE: JANUARY 14, 2009  
DRAWN BY: NJH  
CHECKED BY: RMG

AECOM

V:\schiff\p201\p40468\p40468.dwg\IN28-Knee-wall-Fence.sfm\contract\_276\p2760022.dwg 2/23/2009