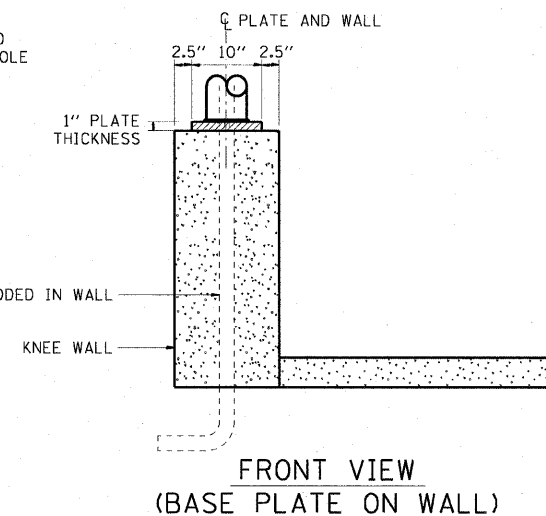
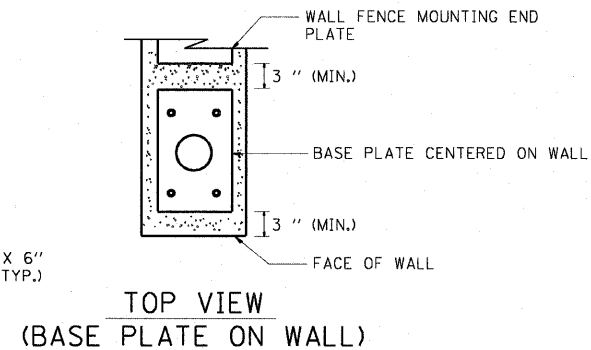
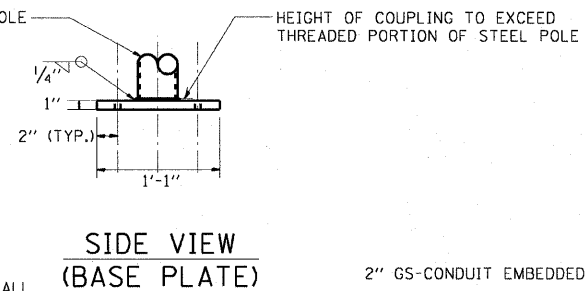
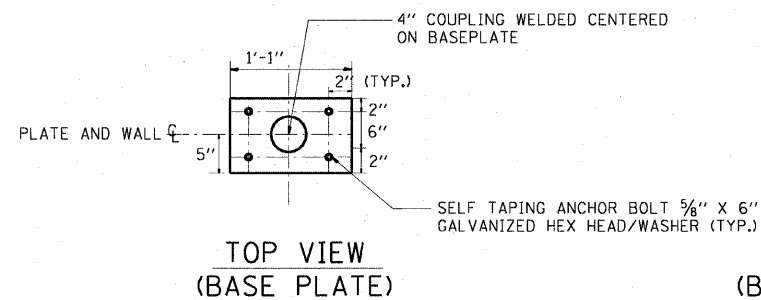
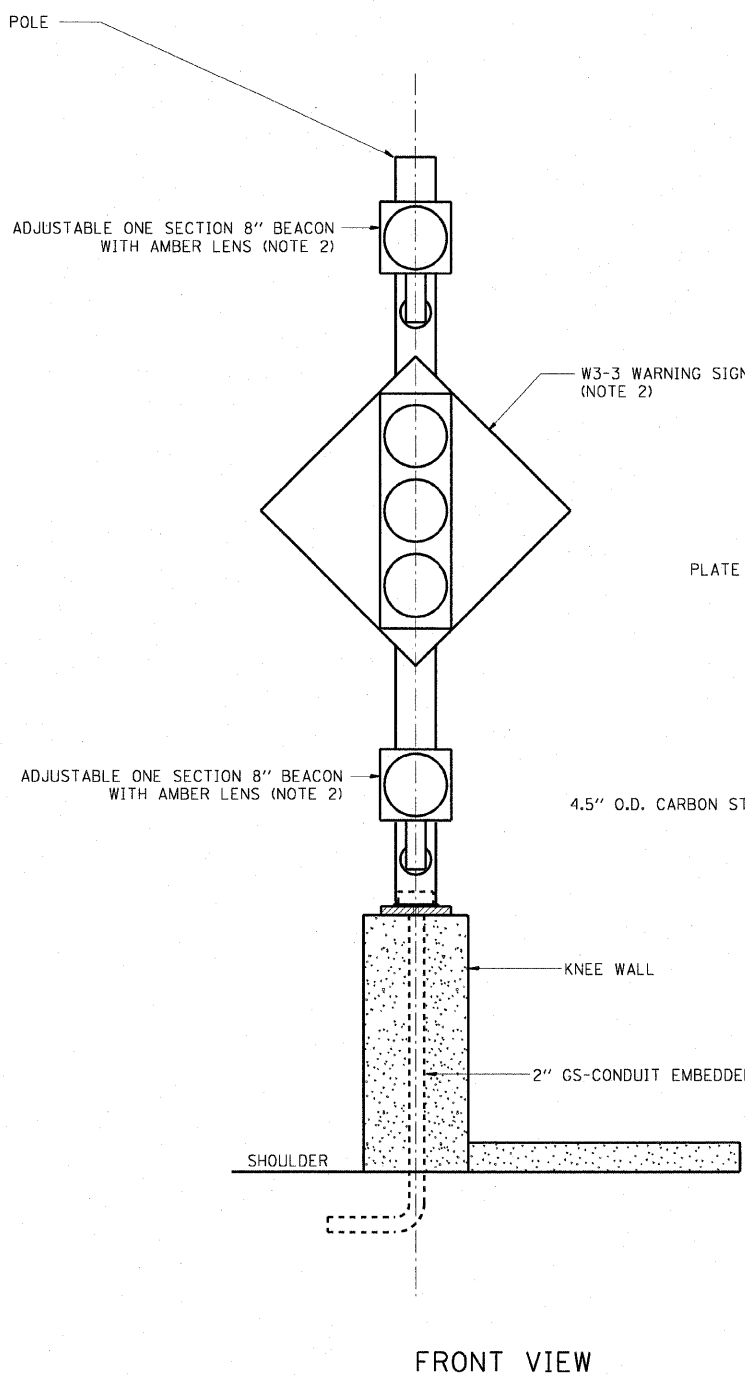
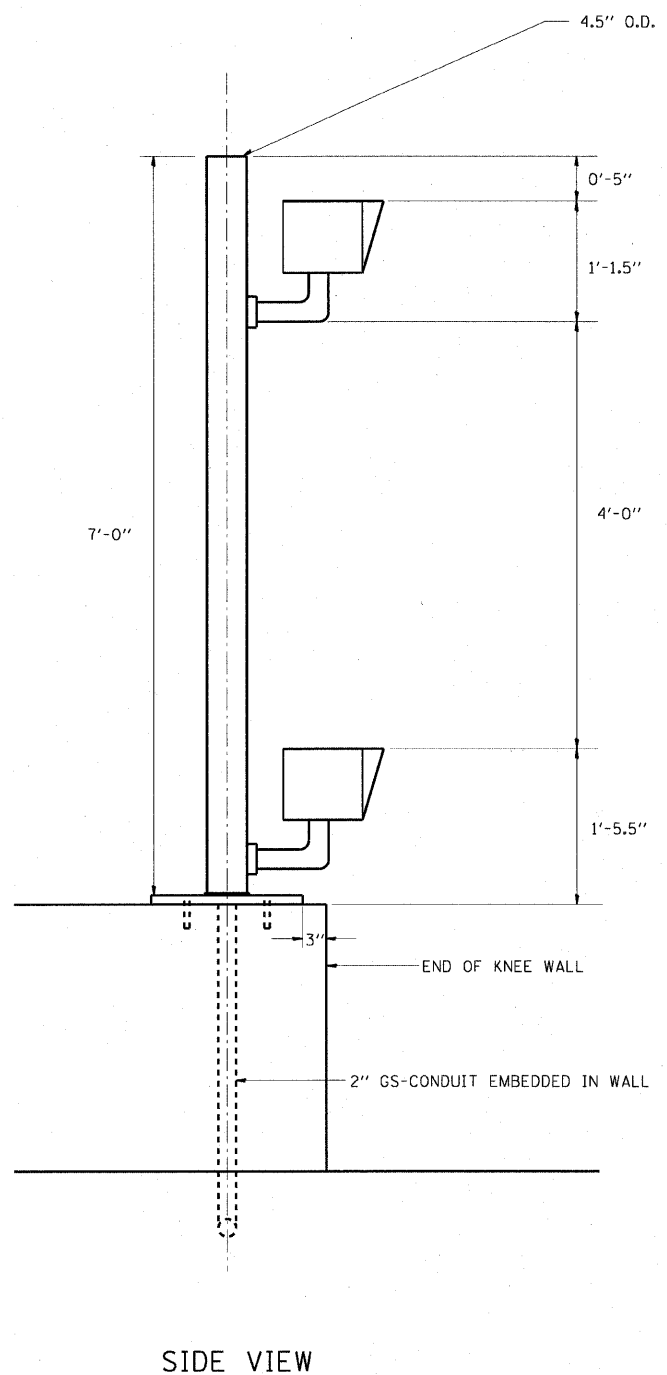


F.A.I. RTE.	SECTION	COUNTY	TOTAL SHEETS	SHEET NO.
90/94	*	COOK	31	23
STA.		TO STA.		
FED. ROAD DIST. NO. 1		ILLINOIS FED. AID PROJECT		
* (1818, 1919, 1919.15) 1-12		62984		

NOTES:

- SEE STRUCTURAL DETAILS FOR CONDUIT IN KNEE WALL INSTALLATION DETAILS.
- BEACONS AND WARNING SIGN FROM EXISTING WOOD POST ARE TO BE REINSTALLED ON THE NEW STEEL POLE AND WIRED BACK TO THE SURVEILLANCE CABINET AS SHOWN ON THE PLAN DRAWINGS.



FLASHER POST ON KNEE WALL

AECOM

REVISIONS	
NAME	DATE

ILLINOIS DEPARTMENT OF TRANSPORTATION
F.A.I. 90/94 (DAN RYAN EXPRESSWAY)
71ST ST TO 63RD ST (SOUTHBOUND KNEE WALLS)

**RAMP METER FLASHER
ON KNEE WALL DETAIL**

SCALE: NOT TO SCALE
DATE: JANUARY 14, 2009
DRAWN BY: HR
CHECKED BY: JPC

DT-35A

1/13/2009 2:26:35 PM