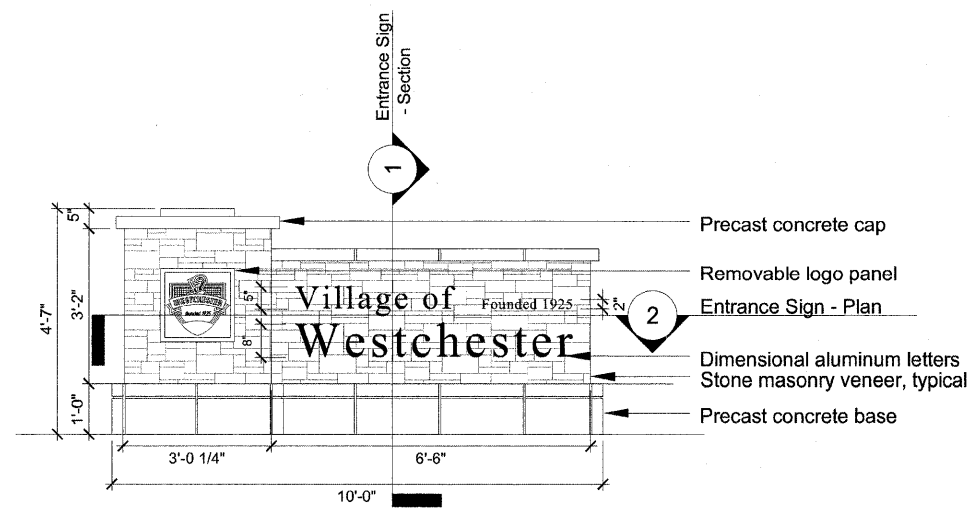
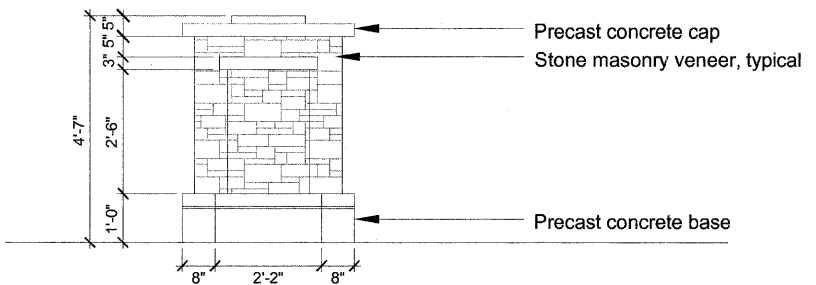


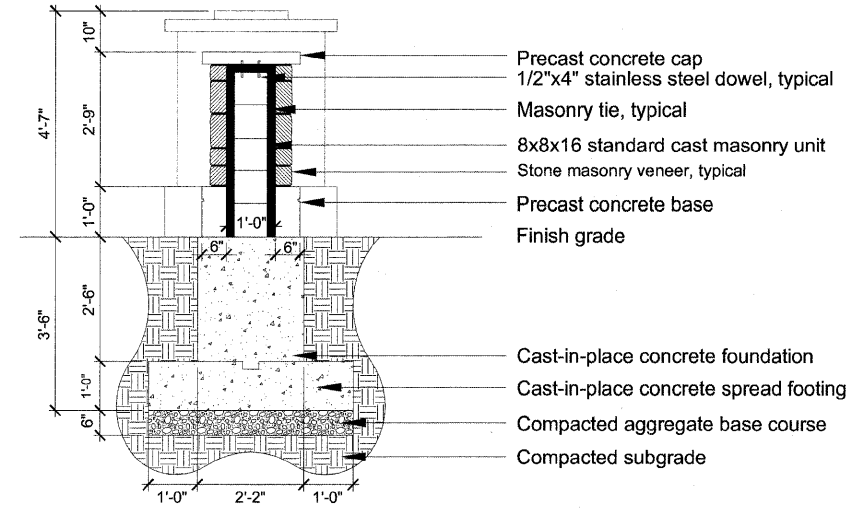
ROUTE NO.	SECTION	COUNTY	TOTAL SHEETS	SHEET NO.
FAP 347	06-00071-00-SW	COOK	17	10
ILLINOIS PROJECT TE-00D1(701)				
VILLAGE SECTION				
CONTRACT NO. 63183				



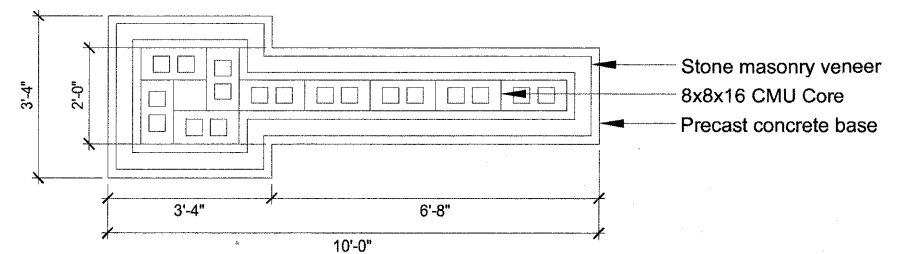
**ENTRANCE SIGN - FRONT ELEVATION**



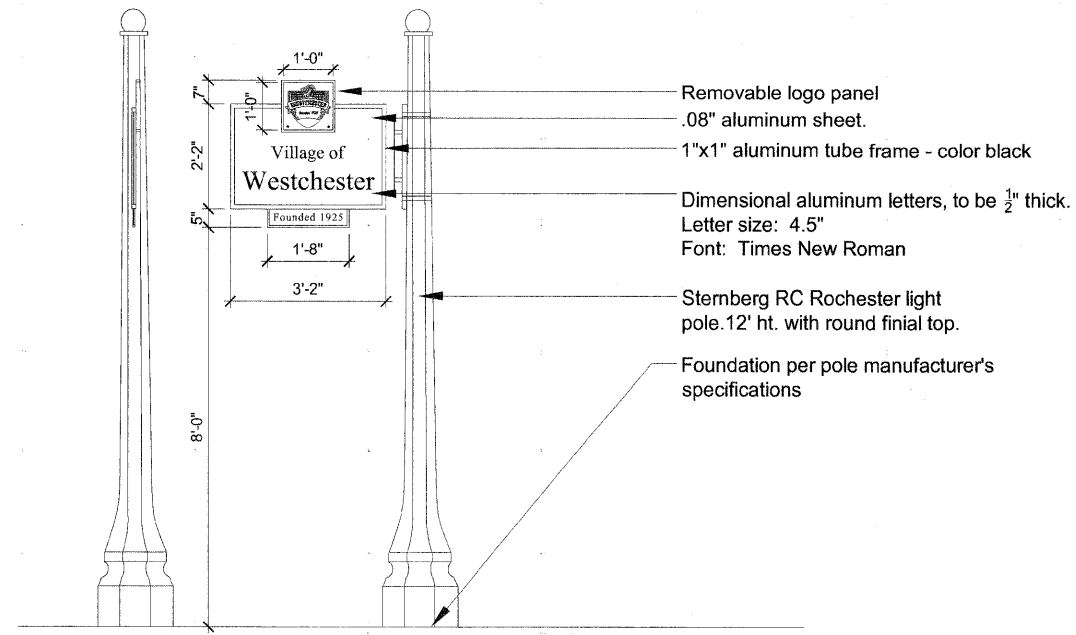
**ENTRANCE SIGN - SIDE ELEVATION**



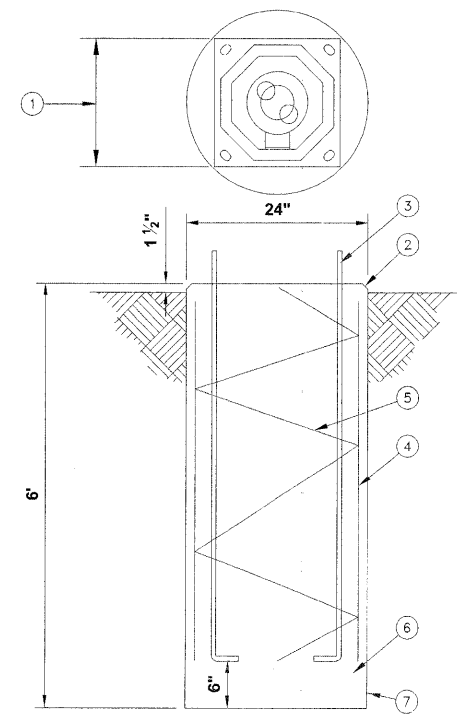
**1 ENTRANCE SIGN - SECTION**



**2 ENTRANCE SIGN - PLAN**



**MINOR SIGN COMPLETE**



**SIGN POLE FOUNDATION**

- ① MANUFACTURER TO FURNISH TEMPLATE DRAWING FOR SETTING OF ANCHOR BOLTS.
- ② 1" CHAMFER
- ③ 4-1" x 36" STEEL ANCHOR BOLTS, TOP 10" THREADED AND GALVANIZED.
- ④ 8-#5 REINFORCING BARS EQUALLY SPACED AROUND AN 18" DIA. CIRCLE
- ⑤ #4 SPIRAL TIE BARS WITH 6" PITCH
- ⑥ CLASS SI CONCRETE
- ⑦ FOUNDATION LOCATIONS AS SHOWN ON PLAN SHEETS.

**Signage General Notes**

1. Sign fabricator to submit shop drawings including all materials, connection methods, sizing, text, layout and color designations per details as shown on plans. If modifications are proposed by the fabricator, provide comprehensive explanation to the owner's representative for review. The owner's representative has sole discretion to approve or reject the proposed modifications to achieve a superior product.
2. Sign fabricator to submit manufacturer's product information for poles and vinyl film, color chip samples of all specified colors, and mock-ups of all artwork, logos, graphics and text for approval by the owner's representative prior to fabrication.
3. All aluminum materials to be powder coated per the specifications, colors as indicated on details.
4. Refer to specifications for additional information, standards and notes.
5. Drawings to be provided in an electronic format upon request for further dimensional detail.
6. Structural Engineer's stamp required on sign frames.

REVISION:		<p><b>HANCOCK ENGINEERING</b></p> <p>◆ Civil Engineers ◆ Municipal Consultants ◆ Established 1911</p> <p>9313 Roosevelt Road Westchester, Illinois 61091-2788 Phone: 708/665-6288 Fax: 708/665-2212</p>
		<p>VILLAGE OF WESTCHESTER ROOSEVELT ROAD (FAP 347) BEAUTIFICATION PROJECT VILLAGE ENTRY SIGN DETAILS</p>
		<p>DRAWN BY: MK CHECKED BY: JCG DATE: 04/15/09</p>
		<p>SCALE: NONE</p>

Drawing file: W:\Projects\83606263 - Roosevelt Rd ITP\Entrance Sign-Detail.dwg Apr 15, 2009 - 11:24am