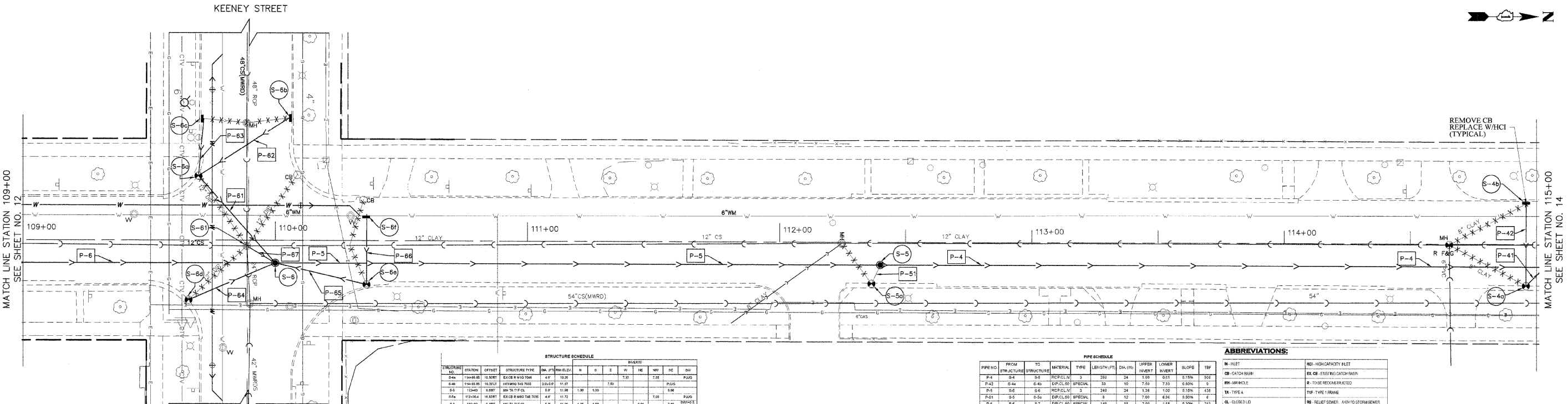


SHERIDAN ROAD
SOUTH BOULEVARD TO MAIN STREET



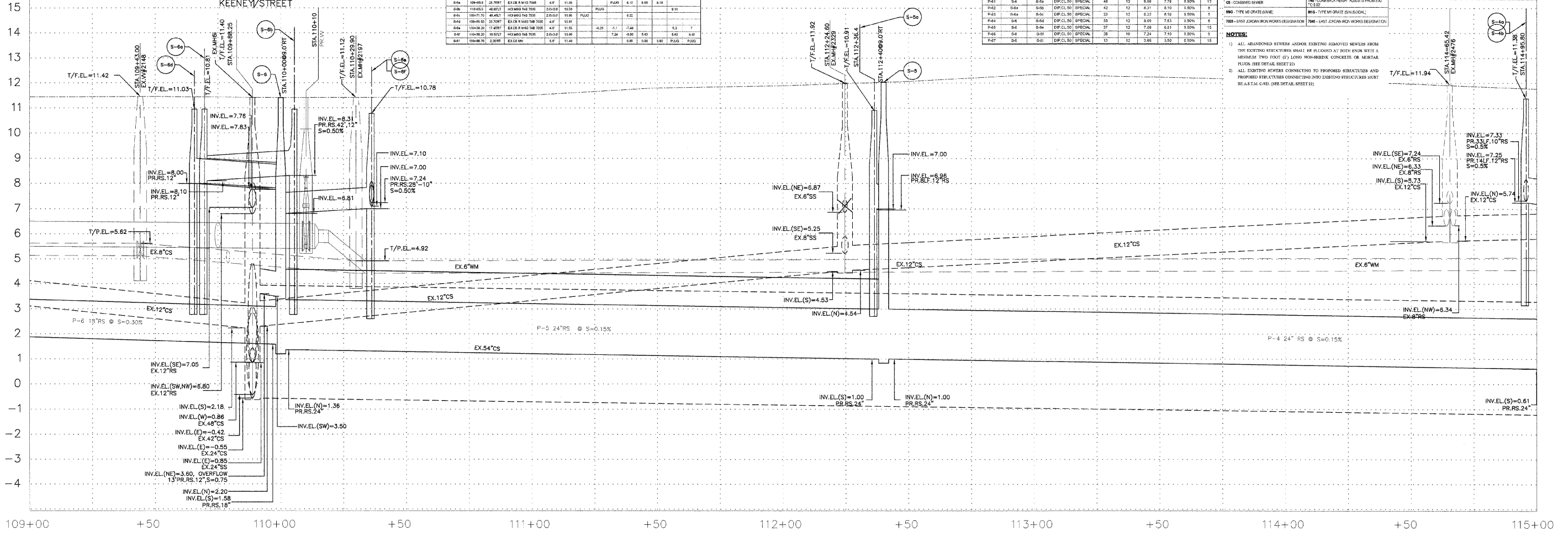
STRUCTURE SCHEDULE

STRUCTURE NO.	STATION	OFFSET	STRUCTURE TYPE	DA (FT)	HA (FT)	N	S	E	W	NE	NW	SE	SW
S-4a	110+00.00	18.00	EX. CB W/12" CS	4.0	10.0					7.0	7.0		
S-4b	110+00.00	18.00	EX. CB W/12" CS	20.0	11.0					7.0	7.0		
S-5a	112+00.00	18.00	EX. CB W/12" CS	4.0	11.0					7.0	7.0		
S-5b	112+00.00	18.00	EX. CB W/12" CS	4.0	11.0					7.0	7.0		
S-6a	114+00.00	18.00	EX. CB W/12" CS	4.0	11.0					7.0	7.0		
S-6b	114+00.00	18.00	EX. CB W/12" CS	4.0	11.0					7.0	7.0		

PIPE SCHEDULE

PIPE NO.	FROM	TO	MATERIAL	TYPE	LENGTH (FT)	DI (IN)	UPPER INVERT	LOWER INVERT	SLOPE	TRF
P-4	S-4	S-5	12" CS	SPECIAL	100	36	1.00	0.51	0.15%	556
P-5	S-5	S-6	12" CS	SPECIAL	100	36	0.51	0.00	0.00%	556
P-6	S-6	S-6b	12" CS	SPECIAL	100	36	0.00	0.00	0.00%	556

- ABBREVIATIONS:**
- IN - INLET
 - CB - CATCH BASIN
 - MANHOLE
 - TYPE-A
 - CLOSED
 - CONCRETE
 - TYPE-B
 - TYPE-C
 - TYPE-D
 - TYPE-E
 - TYPE-F
 - TYPE-G
 - TYPE-H
 - TYPE-I
 - TYPE-J
 - TYPE-K
 - TYPE-L
 - TYPE-M
 - TYPE-N
 - TYPE-O
 - TYPE-P
 - TYPE-Q
 - TYPE-R
 - TYPE-S
 - TYPE-T
 - TYPE-U
 - TYPE-V
 - TYPE-W
 - TYPE-X
 - TYPE-Y
 - TYPE-Z



- NOTES:**
- ALL ABANDONED EXISTING REMOVED SEWERS FROM THE EXISTING STRUCTURES SHALL BE PLACED AT BOTH ENDS WITH A BRIDGE TWO FEET (2) LONG NON-REINFORCED CONCRETE OR METAL FLUX (SEE DETAIL SHEET 2)
 - ALL EXISTING SEWERS CONNECTING TO PROPOSED STRUCTURES AND PROPOSED STRUCTURES CONNECTING TO EXISTING STRUCTURES MUST BE A 3" x 4" C-PIE (SEE DETAIL SHEET 2)

PLANS PREPARED BY: CITY OF EVANSTON
PUBLIC WORKS DEPARTMENT TRANSPORTATION AND ENGINEERING DIVISION
PHONE: (847) 866-2924

DESIGNED - DSM, AA
DRAWN - DSM
CHECKED - SN, PC
DATE - 2 / 3 / 2009

REVISED - 5/20/09 PER MWRD
REVISED - 5/20/09 PER IDOT
REVISED -
REVISED -

STATE OF ILLINOIS
DEPARTMENT OF TRANSPORTATION

RELIEF SEWER IMPROVEMENT PLANS
SHERIDAN ROAD

SCALE: 1" = 20'
SHEET NO. 13 OF 31 SHEETS
STA. 109+00 TO STA. 115+00

F.A.U. RTE.	SECTION	COUNTY	TOTAL SHEETS	SHEET NO.
2885	08-00250-01-PV	COOK	31	13

CONTRACT NO. 63189
ILLINOIS FED. AID PROJECT