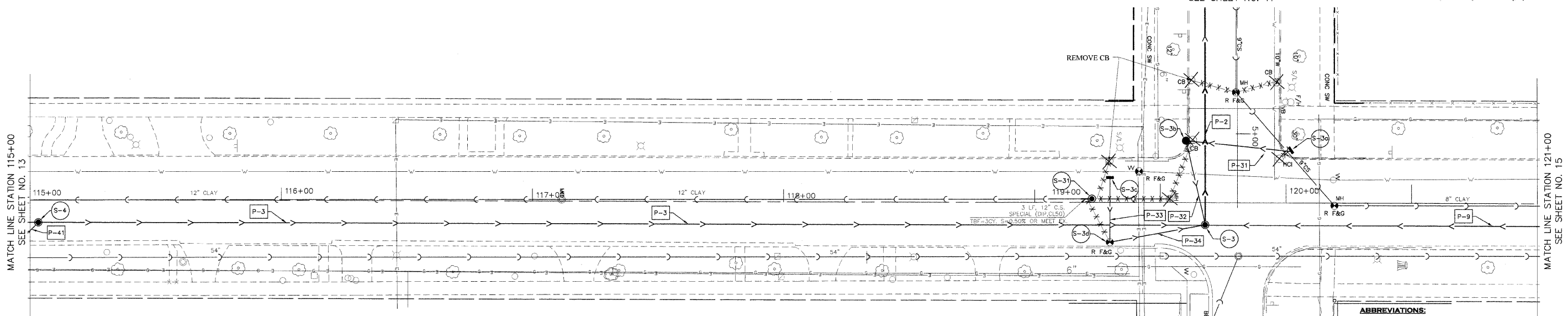
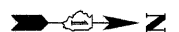


SHERIDAN ROAD
SOUTH BOULEVARD TO MAIN STREET

KEDZIE STREET
MATCH LINE STATION 4+50
SEE SHEET NO. 11



STRUCTURE SCHEDULE

STRUCTURE NO.	STATION	OFFSET	STRUCTURE TYPE	DIA. (FT)	RM ELEV.	INVERTS								
						N	S	E	W	NE	NW	SE	SW	
S-3	119+88	9.0RT	MH TA TIF CL	5.0	10.34	9.91	-0.20		-0.30					6.78
S-3a	120+1.50	20.65LT	HCI M&G T&B 7035	2.0x3.0'	6.87								PLUG	
S-3b	119+00.25	24.85RT	EX CB R M1G 7045	4.0	10.08	6.88							6.78	
S-3c	119+29.95	10.50LT	HCI M&G T&B 7035	2.0x3.0'	10.17								6.06	
S-3d	119+29.95	15.90RT	EX CB R M&G T&B 7035	4.0	10.02								7.93	7
S-31	119+22.75	1.50 LT	MH TA TIF CL	4.0	10.42	PLUG	71.9						PLUG	PLUG
S-4	116+00	9.0RT	MH TA TIF CL	5.0	11.70	0.51	0.51							7.18

PIPE SCHEDULE

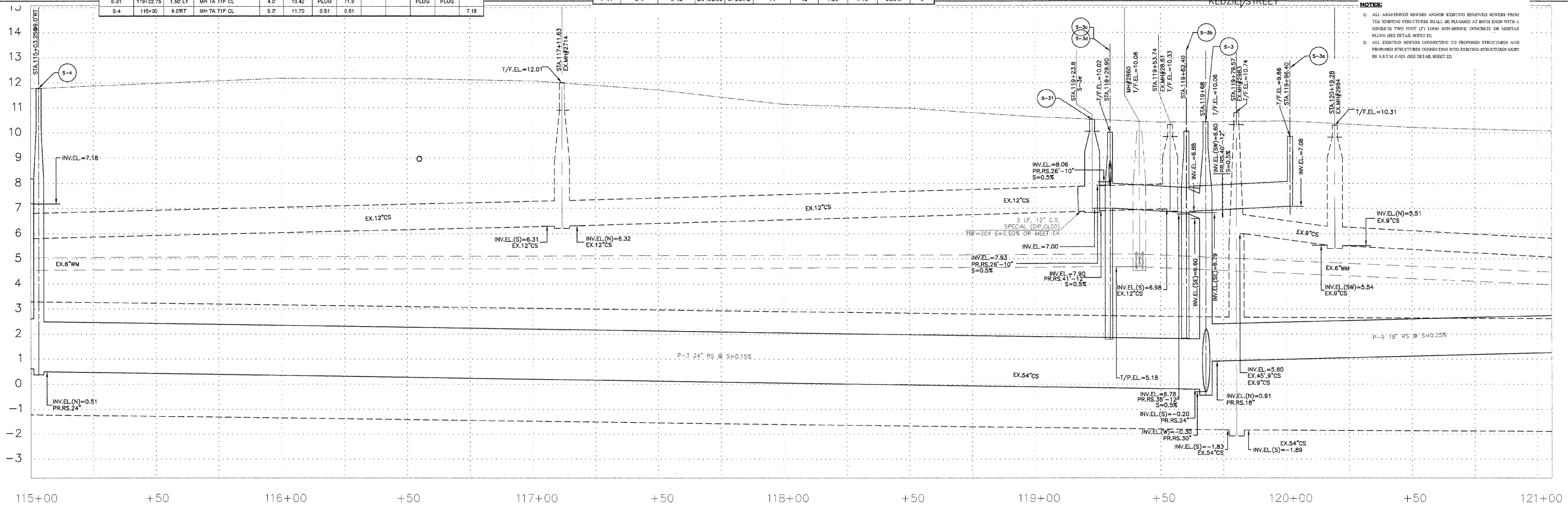
PIPE NO.	FROM STRUCTURE	TO STRUCTURE	MATERIAL	TYPE	LENGTH (FT)	DIA. (IN)	UPPER INVERT	LOWER INVERT	SLOPE	T&B
P-3	S-3	S-4	RCP CL 1/4"	3	468	24	0.51	-0.20	0.15%	798
P-31	S-3b	S-3a	DIP CL 50	SPECIAL	40	12	7.08	6.88	0.50%	10
P-32	S-3	S-3b	DIP CL 50	SPECIAL	35	12	6.78	6.80	0.50%	10
P-33	S-3c	S-3d	DIP CL 50	SPECIAL	28	10	8.06	7.93	0.50%	4
P-34	S-3	S-3d	DIP CL 50	SPECIAL	41	12	7.00	6.79	0.50%	11
P-41	S-4	S-4	DIP CL 50	SPECIAL	14	12	7.25	7.18	0.50%	5

ABBREVIATIONS:

IN. INLET	HCI - HIGH CAPACITY ALLET
CB - CATCH BASIN	EX. CB - EXISTING CATCH BASIN
MH - MANHOLE	A - TO BE RECONSTRUCTED
TA - TYPICAL	TIF - TYPE I FRAME
CL - CLOSED END	R - RELIEF SEWER, A - TO STORM SEWER
CB - COMBINED SEWER	T&B - CONGRUENT ADJUST FROM L&P
M&G - TYPE M GROUND	M&G - TYPE M GROUND (REINFORCED)
T&B - EAST JORDAN ROW WORKS DESIGNATION	T&B - EAST JORDAN ROW WORKS DESIGNATION

NOTES:

- ALL ABANDONED SEWERS AND/OR EXISTING REMOVED SEWERS FROM THE EXISTING STRUCTURES SHALL BE PLUGGED AT BOTH ENDS WITH A MINIMUM TWO FOOT (2') LONG NON-SHREK CONCRETE OR MORTAR PEGS (SEE DETAIL SHEET 2).
- ALL EXISTING SEWERS CONNECTING TO PROPOSED STRUCTURES AND PROPOSED STRUCTURES CONNECTING INTO EXISTING STRUCTURES MUST BE AS SHOWN (SEE DETAIL SHEET 2).



PLANS PREPARED BY: CITY OF EVANSTON
PUBLIC WORKS DEPARTMENT TRANSPORTATION AND ENGINEERING DIVISION
PHONE: (847) 866-2924

DESIGNED - DSM, AA
DRAWN - DSM
CHECKED - SN, PC
DATE - 2 / 3 / 2009

REVISED - 5/20/09 PER MWRD
REVISED - 5/20/09 PER IDOT
REVISED -
REVISED -

STATE OF ILLINOIS
DEPARTMENT OF TRANSPORTATION

RELIEF SEWER IMPROVEMENT PLANS
SHERIDAN ROAD

SCALE: 1" = 20'
SHEET NO. 14 OF 31 SHEETS
STA. 115+00 TO STA. 121+00

F.A.U. RTE.	SECTION	COUNTY	TOTAL SHEETS	SHEET NO.
2865	08-00250-01-PV	COOK	31	14
CONTRACT NO. 63189			ILLINOIS FED. AID PROJECT	