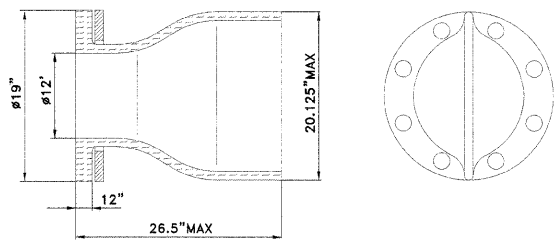
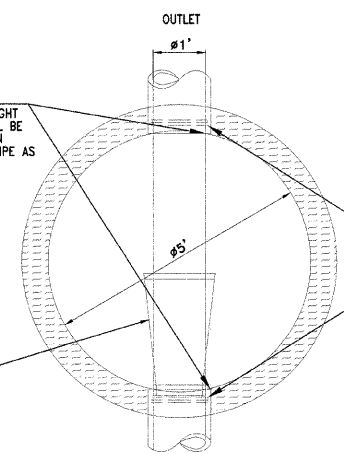


FLANGED CHECK VALVE
NOTE: TIDEFLEX-SERIES 35



NOTE:
RESILIENT WATER TIGHT
CONNECTION SHALL BE
PROVIDED BETWEEN
STRUCTURE AND PIPE AS
PER ASTM C-923

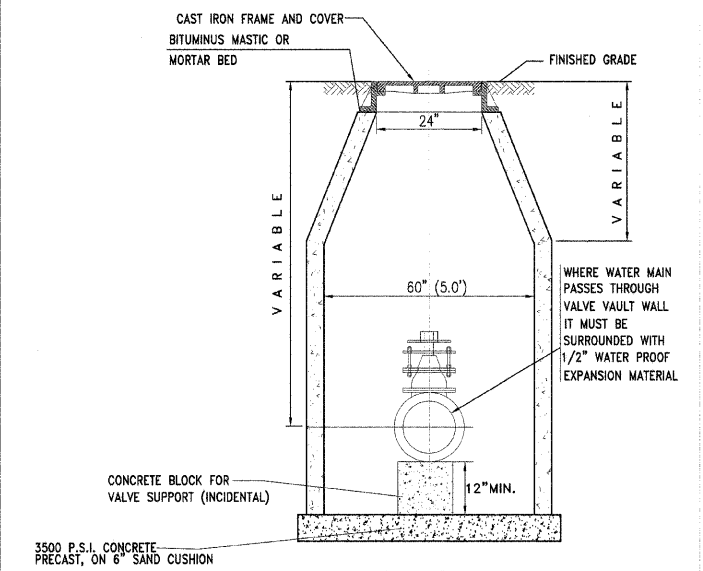


ASTM-923 RESILIENT
FLEXIBLE CONNECTOR
BETWEEN CONCRETE
MANHOLE AND PIPE WHEN
OPENING IS CORED

INSTALL TIDEFLEX-SERIES 35
BACKFLOW PREVENTOR

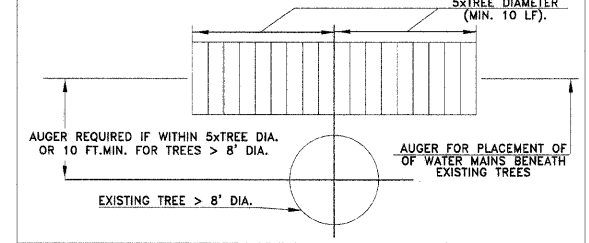
SECTIONAL PLAN ON MH

TYPICAL VALVE VAULT DETAIL



WHERE WATER MAIN
PASSES THROUGH
VALVE VAULT WALL
IT MUST BE
SURROUNDED WITH
1/2" WATER PROOF
EXPANSION MATERIAL

SHORT TUNNEL/AUGER DETAIL

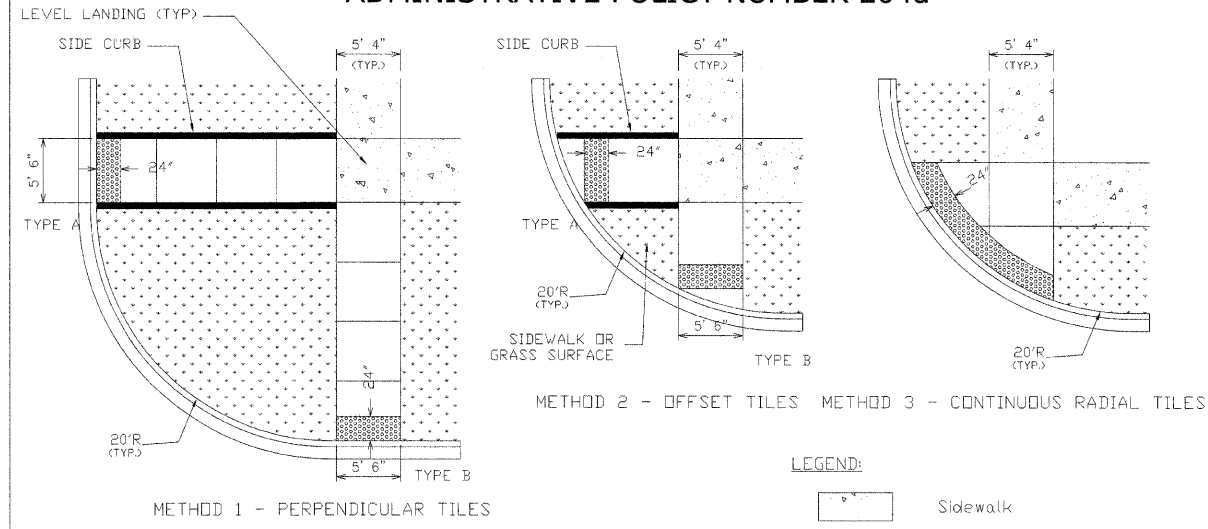


AUGER REQUIRED IF WITHIN 5x TREE DIA.
OR 10 FT. MIN. FOR TREES > 8' DIA.

AUGER FOR PLACEMENT OF
OF WATER MAINS BENEATH
EXISTING TREES

EXISTING TREE > 8' DIA.

CURB RAMP DETAIL
ADMINISTRATIVE POLICY NUMBER 204a



GENERAL NOTES:

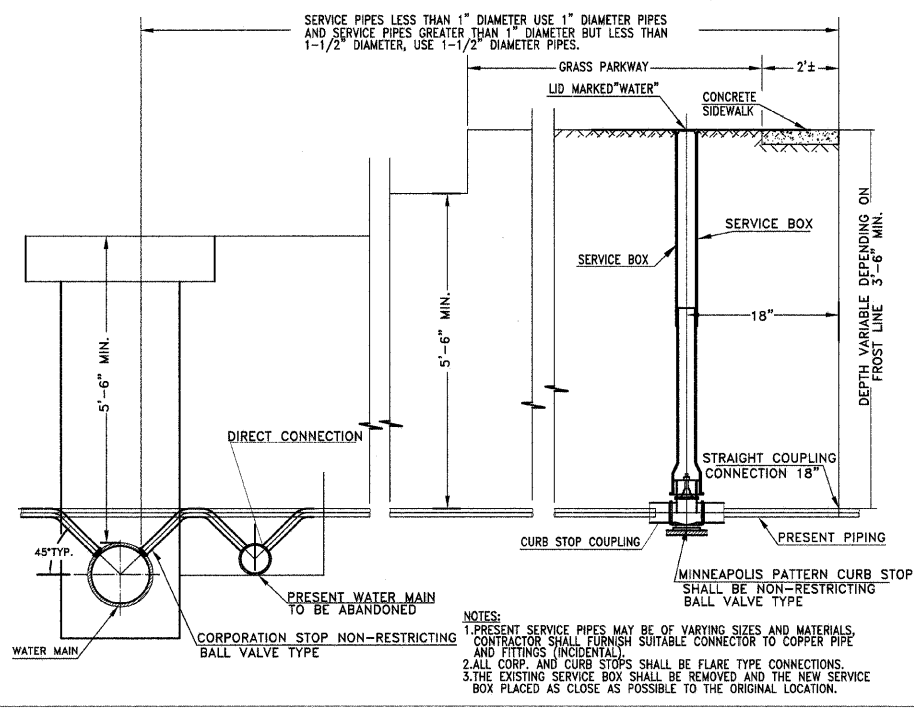
- DETECTABLE WARNING TILES SHALL BE INSTALLED THE FULL WIDTH OF THE CURB RAMP AS SHOWN ABOVE, ON THE PLANS, OR AS DIRECTED BY THE ENGINEER. TYPICAL WIDTHS ARE AS FOLLOWS:
a) 5'-6" FOR METHODS 1 AND 2
b) VARIOUS LENGTHS OF RADIAL TILES FOR METHOD 3
- A LEVEL LANDING (MINIMUM OF 5'x5' AREA WITH SLOPE IN ALL DIRECTIONS LESS THAN 2%) SHALL BE INSTALLED PRIOR TO ALL CURB RAMP. METHOD 3 REQUIRES ENTIRE CORNER TO BE A LEVEL LANDING.
- A DEVIATION OF A 1/2" OR MORE FROM ADJACENT SURFACES IS NOT ALLOWED.
- SIDE CURBS AS SHOWN IN METHODS 1 AND 2 AS THE TYPE A RAMP WILL NOT BE PAID FOR SEPARATELY BUT WILL BE MEASURED FOR PAYMENT AS PCC SIDEWALK AND WILL BE REQUIRED AS DIRECTED BY THE ENGINEER OR AS SHOWN ON THE PLANS, WHILE TYPE B RAMP WILL REQUIRE CURB OPENING SIDE FLARES.
- SEE APPLICABLE PORTIONS OF IDOT HIGHWAY STANDARD 424001 (CURB RAMP FOR SIDEWALKS), THE IDOT STANDARD SPECIFICATIONS FOR ROAD AND BRIDGE CONSTRUCTION SECTION 424 (PORTLAND CEMENT CONCRETE SIDEWALK), AND THE AMERICANS WITH DISABILITIES ACT ACCESSIBILITY GUIDELINES (ADAAG) FOR ADDITIONAL REQUIREMENTS.
- DEPRESSED CURB AND GUTTER ADJACENT TO CURB RAMP SHALL BE INSTALLED TO THE DIMENSIONS PROVIDED IN IDOT HIGHWAY STANDARD 606001 (CONCRETE CURB TYPE B AND COMBINATION CURB AND GUTTER).
- WHEN USING METHOD 3 ROADWAY CURB RADII SHALL BE INSTALLED AT 15', 20', OR 25' RADIUS TO THE BACK OF CURB AS NOTED ON PLANS OR AS DIRECTED BY ENGINEER.

LEGEND:

- Sidewalk
- Ramp
- Detectable Warnings, Red
- Non walking area (Grass)

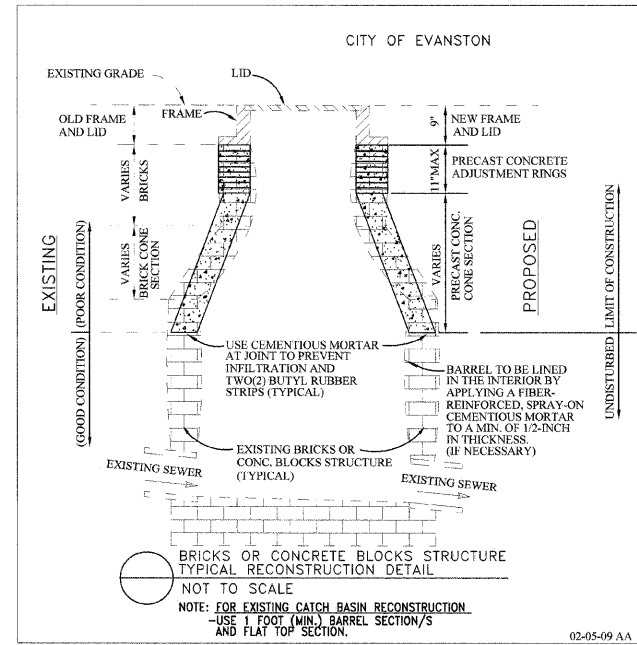
CITY OF EVANSTON PUBLIC WORKS DEPARTMENT DIVISION OF TRANSPORTATION	
APPROVED BY	DATE
DIRECTOR OF TRANSPORTATION/CITY ENGINEER	
DIRECTOR OF PUBLIC WORKS	

TYPICAL WATER SERVICE CONNECTION DETAIL



SERVICE PIPES LESS THAN 1" DIAMETER USE 1" DIAMETER PIPES
AND SERVICE PIPES GREATER THAN 1" DIAMETER BUT LESS THAN
1-1/2" DIAMETER, USE 1-1/2" DIAMETER PIPES.

- NOTES:
- PRESENT SERVICE PIPES MAY BE OF VARYING SIZES AND MATERIALS. CONTRACTOR SHALL FURNISH SUITABLE CONNECTOR TO COPPER PIPE AND FITTINGS (INCIDENTAL).
 - ALL CORP. AND CURB STOPS SHALL BE FLARE TYPE CONNECTIONS.
 - THE EXISTING SERVICE BOX SHALL BE REMOVED AND THE NEW SERVICE BOX PLACED AS CLOSE AS POSSIBLE TO THE ORIGINAL LOCATION.



CITY OF EVANSTON

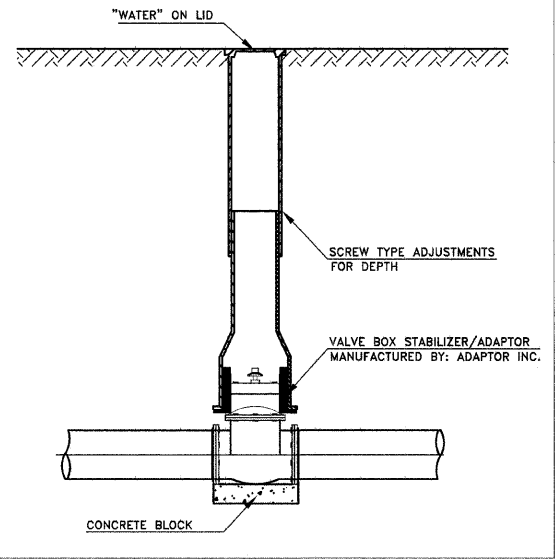
EXISTING GRADE
EXISTING SEWER
EXISTING BRICKS OR CONC. BLOCKS STRUCTURE (TYPICAL)
EXISTING SEWER
EXISTING GRADE
LID
FRAME
NEW FRAME AND LID
PRECAST CONCRETE ADJUSTMENT RINGS
BRICK CONE SECTION
PRECAST CONCRETE CONE SECTION
LIMIT OF CONSTRUCTION
UNDISTURBED

BRICKS OR CONCRETE BLOCKS STRUCTURE
TYPICAL RECONSTRUCTION DETAIL
NOT TO SCALE

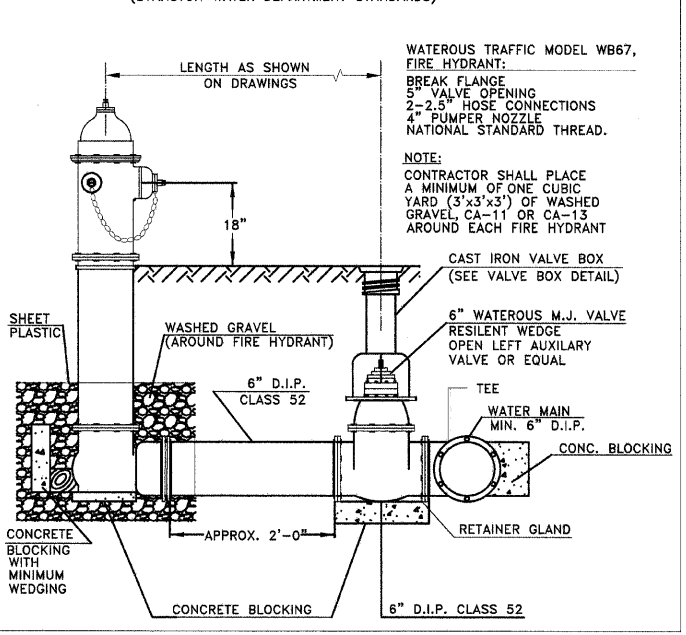
NOTE: FOR EXISTING CATCH BASIN RECONSTRUCTION
USE 1 FOOT (MIN.) BARREL SECTION/S
AND FLAT TOP SECTION.

02-05-09 AA

TYPICAL VALVE BOX DETAIL



TYPICAL FIRE HYDRANT DETAIL
(EVANSTON WATER DEPARTMENT STANDARDS)



WATEROUS TRAFFIC MODEL WB67,
FIRE HYDRANT;
BREAK FLANGE
5" VALVE OPENING
2"-2.5" HOSE CONNECTIONS
4" PUMPER NOZZLE
NATIONAL STANDARD THREAD.

NOTE:
CONTRACTOR SHALL PLACE
A MINIMUM OF ONE CUBIC
YARD (3'x3'x3') OF WASHED
GRAVEL, CA-11 OR CA-13
AROUND EACH FIRE HYDRANT

CAST IRON VALVE BOX
(SEE VALVE BOX DETAIL)

6" WATEROUS M.J. VALVE
RESILIENT WEDGE
OPEN LEFT AUXILIARY
VALVE OR EQUAL

TEE
WATER MAIN
MIN. 6" D.I.P.

CONC. BLOCKING

RETAINER GLAND

APPROX. 2'-0"

6" D.I.P. CLASS 52

PLANS PREPARED BY:
CITY OF EVANSTON
PUBLIC WORKS DEPARTMENT TRANSPORTATION
AND ENGINEERING DIVISION
PHONE: (847) 866-2924

DESIGNED - DSM, AA
DRAWN - DSM
CHECKED - SN, PC
DATE - 2 / 3 / 2009

REVISED - 5/20/09 PER MWRD
REVISED - 5/20/09 PER IDOT
REVISED -
REVISED -

STATE OF ILLINOIS
DEPARTMENT OF TRANSPORTATION

CONSTRUCTION DETAILS
SHERIDAN ROAD

SCALE: N.T.S. SHEET NO. 23 OF 31 SHEETS STA. N.A. TO STA. N.A.

F.A.U. RTE.	SECTION	COUNTY	TOTAL SHEETS	SHEET NO.
2865	08-00250-01-PV	COOK	31	23
CONTRACT NO. 63189				

ILLINOIS FED. AID PROJECT