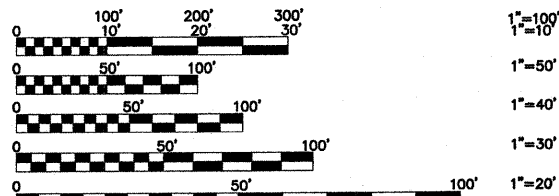


**INDEX OF SHEETS**

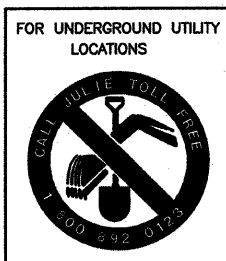
- 1.) COVER SHEET, INDEX OF SHEETS, LOCATION MAP, INDEX OF STATE STANDARDS
- 2.) GENERAL NOTES, JOINT DETAILS, AND SUMMARY OF QUANTITIES
- 3.) TYPICAL CROSS SECTIONS, HOT-MIX ASPHALT MIXTURE REQUIREMENTS
- 4.) **PLAN:** LYONS STREET (RESURFACING) - EAST AVE. TO EAST OF KIMBALL AVE.  
COBB STREET (RESURFACING) - EAST AVE. TO KIMBALL AVE.
- 5.) **PLAN:** 67th STREET (RESURFACING) - EAST AVE. TO EAST KANE AVE.
- 6.) **PLAN:** CHESTER AVENUE (RESURFACING) - 67th ST. TO LYONS ST.  
WENZ AVENUE (RESURFACING) - 67th ST. TO LYONS ST.  
CONRAD AVENUE (RESURFACING) - 67th ST. TO LYONS ST.
- 7.) **PLAN:** KANE AVENUE (RESURFACING) - 67th ST. TO NORTH OF LYONS ST.  
KIMBALL AVENUE (RESURFACING) - SOUTH OF COBB ST. TO LYONS ST.
- 8.) **PLAN:** LYONS STREET (PAVEMENT MARKINGS) - EAST AVE. TO EAST OF KIMBALL AVE.  
COBB STREET (PAVEMENT MARKINGS) - EAST AVE. TO KIMBALL AVE.
- 9.) **PLAN:** 67th STREET (PAVEMENT MARKINGS) - EAST AVE. TO EAST KANE AVE.
- 10.) **PLAN:** CHESTER AVENUE (PAVEMENT MARKINGS) - 67th ST. TO LYONS ST.  
WENZ AVENUE (PAVEMENT MARKINGS) - 67th ST. TO LYONS ST.  
CONRAD AVENUE (PAVEMENT MARKINGS) - 67th ST. TO LYONS ST.
- 11.) **PLAN:** KANE AVENUE (PAVEMENT MARKINGS) - 67th ST. TO NORTH OF LYONS ST.  
KIMBALL AVENUE (PAVEMENT MARKINGS) - SOUTH OF COBB ST. TO LYONS ST.
- 12.) DISTRICT ONE TYPICAL PAVEMENT MARKINGS
- 13.) TEMPORARY PAVEMENT MARKING LETTERS AND SYMBOLS
- 14.) TRAFFIC CONTROL AND PROTECTION FOR SIDEROADS, INTERSECTIONS, AND DRIVEWAYS
- 15.) SIGNING FOR FLAGGING OPERATION AT WORK ZONE OPENINGS
- 16.) CURB OR CURB AND GUTTER REMOVAL AND REPLACEMENT
- 17.) FRAMES AND LIDS ADJUSTMENTS WITH MILLING
- 18.) BUTT JOINT AND HOT-MIX ASPHALT TAPER DETAILS

**STATE STANDARDS**

- 000001-05 STANDARDS SYMBOLS, ABBREVIATIONS, AND PATTERNS
- 424001-05 CURB RAMPS FOR SIDEWALK
- 442201-03 CLASS C AND D PATCHES
- 604001-03 FRAME & LIDS, TYPE 1
- 606001-04 CONCRETE CURB AND COMBINATION CONCRETE CURB & GUTTER
- 701501-05 URBAN LANE CLOSURE, 2 L, 2 W UNDIVIDED
- 701801-04 LANE CLOSURE, MULTILANE 1W OR 2W CROSSWALK OR SIDEWALK CLOSURE
- 701901-01 TRAFFIC CONTROL DEVICES
- 780001-02 TYPICAL PAVEMENT MARKINGS



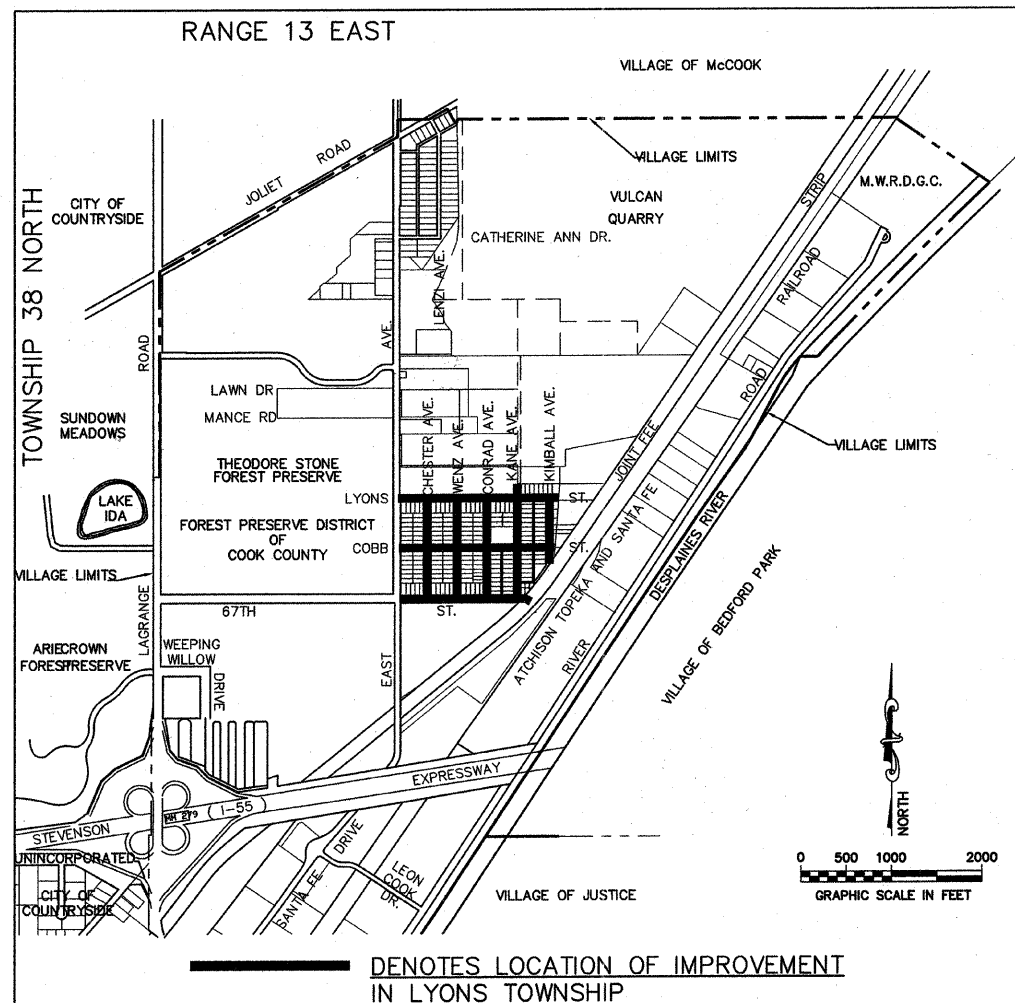
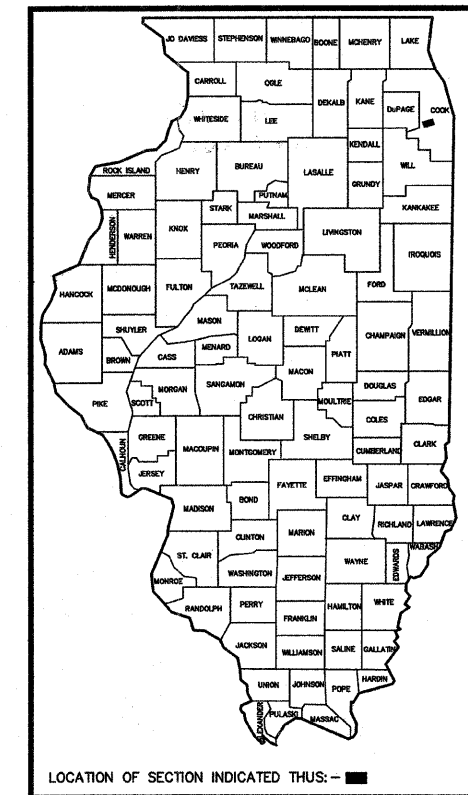
FULL SIZE PLANS HAVE BEEN PREPARED USING STANDARD ENGINEERING SCALES. REDUCED SIZED PLANS WILL NOT CONFORM TO STANDARD SCALES. IN MAKING MEASUREMENTS ON REDUCED PLANS, THE ABOVE SCALES MAY BE USED.



STATE OF ILLINOIS  
DEPARTMENT OF TRANSPORTATION  
DIVISION OF HIGHWAYS  
**PLANS FOR PROPOSED  
FEDERAL AID HIGHWAY**  
VARIOUS ROUTES  
LAPP STREET RESURFACING  
FEDERAL PROJECT HPP-3461(002)  
SECTION NO. 09-00016-00-RS  
VILLAGE OF HODGKINS  
COOK COUNTY  
JOB NO. C-91-361-09

FAU RTE	SECTION	COUNTY	TOTAL SHEETS	SHEET NO.
VARIOUS	09-00016-00-RS	COOK	18	1
F.H.W.A. REG.	ILLINOIS PROJECT	HPP-3461(002)		

CONTRACT NO. 63204



— DENOTES LOCATION OF IMPROVEMENT IN LYONS TOWNSHIP

**LOCATION MAP**

**LENGTH OF PROJECT**

GROSS LENGTH OF PROJECT 9,656 FEET (1.8288 MILES)  
NET LENGTH OF PROJECT 9,309 FEET (1.7631 MILES)

STATE OF ILLINOIS  
DEPARTMENT OF TRANSPORTATION  
DIVISION OF HIGHWAYS

APPROVED MAY 26 2009

VILLAGE PRESIDENT [Signature]  
NOEL B. CUMMINGS, PRESIDENT

PASSED MAY 26, 2009  
[Signature]  
DISTRICT #1 ENGINEER OF LOCAL ROADS & STREETS

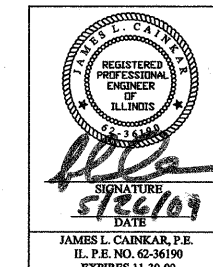
RELEASING FOR BID  
BASED ON LIMITED  
REVIEW MAY 29, 2009  
[Signature]  
DEPUTY DIRECTOR OF HIGHWAYS, REGION #1 ENGINEER

PROJECT LOCATED IN THE  
VILLAGE OF HODGKINS

PRINTED BY THE AUTHORITY  
OF THE STATE OF ILLINOIS

SEE SHEET 3 FOR  
DESIGN DETAILS

TRAFFIC DATA:  
ADT (2009): 400  
POSTED SPEED LIMIT = 20 MPH  
DESIGN SPEED LIMIT = 20 MPH



**Frank Novotny & Associates, Inc.**  
826 Midway Drive • Willowbrook, IL • 60527 • Telephone: (630) 887-8640 • Fax: (630) 887-0132  
ILLINOIS PROFESSIONAL DESIGN FIRM NO. 184-000928

FNA JOB # 09055

FIELD ENGINEER: MARILYN SOLOMON (847)705-4407  
CONSULTANT: FRANK NOVOTNY AND ASSOCIATES, INC. (630)887-8640

CONTRACT NO. 63204

REVISIONS			
NO.	BY	DATE	DESCRIPTION
1	JLC	5-20-09	PER I.D.O.T. REVIEW