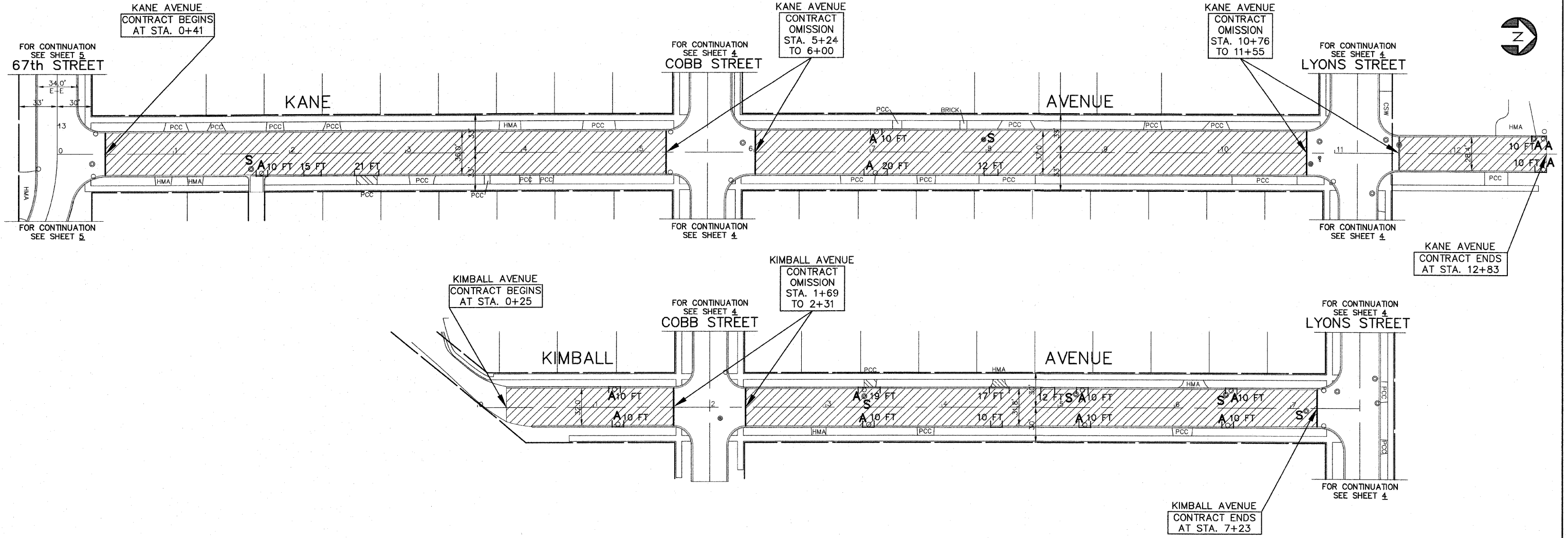


FAU RTE	SECTION	COUNTY	TOTAL SHEETS	SHEET NO.
VARIOUS	09-00016-00-RS	COOK	18	7
F.H.W.A. REG.	ILLINOIS	PROJECT	HPP-3461(002)	

CONTRACT NO. 63204



**NOTE:**  
FOR CONTINUATION OF NORTH-SOUTH STREETS TO BE RESURFACED, SEE SHEET 5

FOR TYPICAL CROSS SECTION OF NEW PAVEMENT WORK SEE SHEET 3

**NOTE:**  
1) ALL SAW CUTS SHALL BE CONSIDERED INCIDENTAL TO THE CONTRACT

**LEGEND**

- DENOTES HOT-MIX ASPHALT SURFACE REMOVAL (SEE SHEET 3 FOR SCOPE OF WORK)
- DENOTES HOT-MIX ASPHALT SURFACE REMOVAL-BUTT JOINT (4.5' WIDTH) WITH 15' TAPER LENGTH
- DENOTES DRIVEWAY PAVEMENT REMOVAL AND INCIDENTAL HOT-MIX ASPHALT SURFACING, 3"
- DENOTES CLASS D PATCHES, TYPE I-IV, 8", - AS DIRECTED
- DENOTES PORTLAND CEMENT CONCRETE DRIVEWAY PAVEMENT REMOVAL AND REPLACEMENT, 7"
- DENOTES PAVEMENT REMOVAL AND P.C. CONCRETE PAVEMENT, 8"
- DENOTES P.C. CONCRETE SIDEWALK, 5" REMOVAL & REPLACEMENT, WITH DETECTABLE WARNING TACTILE STRIP FOR HANDICAP RAMPS PER I.D.O.T. STANDARD 424001-05
- "A" DENOTES EXISTING VALVE VAULTS, VALVE BOXES, INLETS, CATCH BASINS AND MANHOLES TO BE CLEANED, GROUTED, AND ADJUSTED TO GRADE WITH NEW ADJUSTING RINGS. (ALL TOP BANDS OF FALLEN, COMMON OR CONCRETE BRICK TO BE REPLACED WITH PRECAST CONCRETE ADJUSTING RINGS)
- "S" DENOTES EXISTING STRUCTURES TO BE ADJUSTED (SPECIAL) (SEE SHEET 1Z FOR DETAIL)
- DENOTES COMBINATION CONCRETE CURB & GUTTER REMOVAL AND REPLACEMENT PROVIDE DETECTABLE WARNINGS AND RAMPS AT ALL SIDEWALK
- DENOTES EXISTING SIDEWALK RAMP TO REMAIN

**IMPORTANT!**  
FULL SIZE PLANS HAVE BEEN PREPARED USING STANDARD ENGINEERING SCALES. REDUCED SIZE PLANS WILL NOT CONFORM TO STANDARD SCALES INDICATED IN TITLE BLOCK.

**Frank Novotny & Associates, Inc.**  
Civil Engineers/Municipal Consultants  
825 Midway Drive • Willowbrook, IL • 60527 • Telephone: (630) 887-8640 • Fax: (630) 887-0132  
Illinois Professional Design Firm No. 184-000928

PROJECT  
**VILLAGE OF HODGKINS, ILLINOIS**  
LAPP STREET RESURFACING  
MFT SECTION NO. 09-00016-00-RS

R E V I S I O N S			
NO.	BY	DATE	DESCRIPTION

**PLAN:**  
KANE AVENUE -  
67th ST. TO NORTH OF LYONS ST.  
KIMBALL AVENUE -  
SOUTH OF COBB ST. TO LYONS ST.

PROJECT NO. 09055	SCALE 1"=40'	SHEET 7 OF 18 SHEETS
DRAWN/DESIGNED JFP/JLC	DATE APR., 2009	
CHECKED/APPROVED JLC	FIELD BOOK NO. FILE	

(RESURFACING)

I:\Projects\2009\09055\_HPP\_Resurfacing\09055\_Plan\_04-07\_09.dwg - 05-11-2009 8:15:45 AM - User: JFP