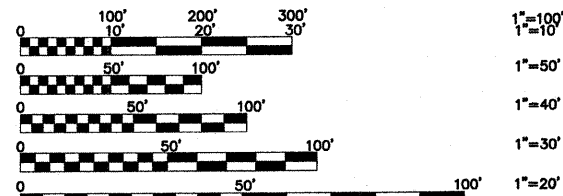


INDEX OF SHEETS

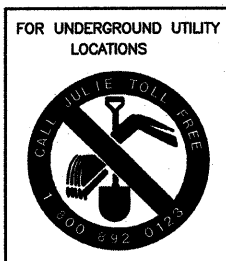
- 1.) COVER SHEET, INDEX OF SHEETS, LOCATION MAP, INDEX OF STATE STANDARDS
- 2.) GENERAL NOTES, JOINT DETAILS, AND SUMMARY OF QUANTITIES
- 3.) TYPICAL CROSS SECTIONS, HOT-MIX ASPHALT MIXTURE REQUIREMENTS
- 4.) **PLAN:** LYONS STREET (RESURFACING) - EAST AVE. TO EAST OF KIMBALL AVE.
COBB STREET (RESURFACING) - EAST AVE. TO KIMBALL AVE.
- 5.) **PLAN:** 67th STREET (RESURFACING) - EAST AVE. TO EAST KANE AVE.
- 6.) **PLAN:** CHESTER AVENUE (RESURFACING) - 67th ST. TO LYONS ST.
WENZ AVENUE (RESURFACING) - 67th ST. TO LYONS ST.
CONRAD AVENUE (RESURFACING) - 67th ST. TO LYONS ST.
- 7.) **PLAN:** KANE AVENUE (RESURFACING) - 67th ST. TO NORTH OF LYONS ST.
KIMBALL AVENUE (RESURFACING) - SOUTH OF COBB ST. TO LYONS ST.
- 8.) **PLAN:** LYONS STREET (PAVEMENT MARKINGS) - EAST AVE. TO EAST OF KIMBALL AVE.
COBB STREET (PAVEMENT MARKINGS) - EAST AVE. TO KIMBALL AVE.
- 9.) **PLAN:** 67th STREET (PAVEMENT MARKINGS) - EAST AVE. TO EAST KANE AVE.
- 10.) **PLAN:** CHESTER AVENUE (PAVEMENT MARKINGS) - 67th ST. TO LYONS ST.
WENZ AVENUE (PAVEMENT MARKINGS) - 67th ST. TO LYONS ST.
CONRAD AVENUE (PAVEMENT MARKINGS) - 67th ST. TO LYONS ST.
- 11.) **PLAN:** KANE AVENUE (PAVEMENT MARKINGS) - 67th ST. TO NORTH OF LYONS ST.
KIMBALL AVENUE (PAVEMENT MARKINGS) - SOUTH OF COBB ST. TO LYONS ST.
- 12.) DISTRICT ONE TYPICAL PAVEMENT MARKINGS
- 13.) TEMPORARY PAVEMENT MARKING LETTERS AND SYMBOLS
- 14.) TRAFFIC CONTROL AND PROTECTION FOR SIDEROADS, INTERSECTIONS, AND DRIVEWAYS
- 15.) SIGNING FOR FLAGGING OPERATION AT WORK ZONE OPENINGS
- 16.) CURB OR CURB AND GUTTER REMOVAL AND REPLACEMENT
- 17.) FRAMES AND LIDS ADJUSTMENTS WITH MILLING
- 18.) BUTT JOINT AND HOT-MIX ASPHALT TAPER DETAILS

STATE STANDARDS

- 000001-05 STANDARDS SYMBOLS, ABBREVIATIONS, AND PATTERNS
- 424001-05 CURB RAMPS FOR SIDEWALK
- 442201-03 CLASS C AND D PATCHES
- 604001-03 FRAME & LIDS, TYPE 1
- 606001-04 CONCRETE CURB AND COMBINATION CONCRETE CURB & GUTTER
- 701501-05 URBAN LANE CLOSURE, 2 L, 2 W UNDIVIDED
- 701801-04 LANE CLOSURE, MULTILANE 1W OR 2W CROSSWALK OR SIDEWALK CLOSURE
- 701901-01 TRAFFIC CONTROL DEVICES
- 780001-02 TYPICAL PAVEMENT MARKINGS

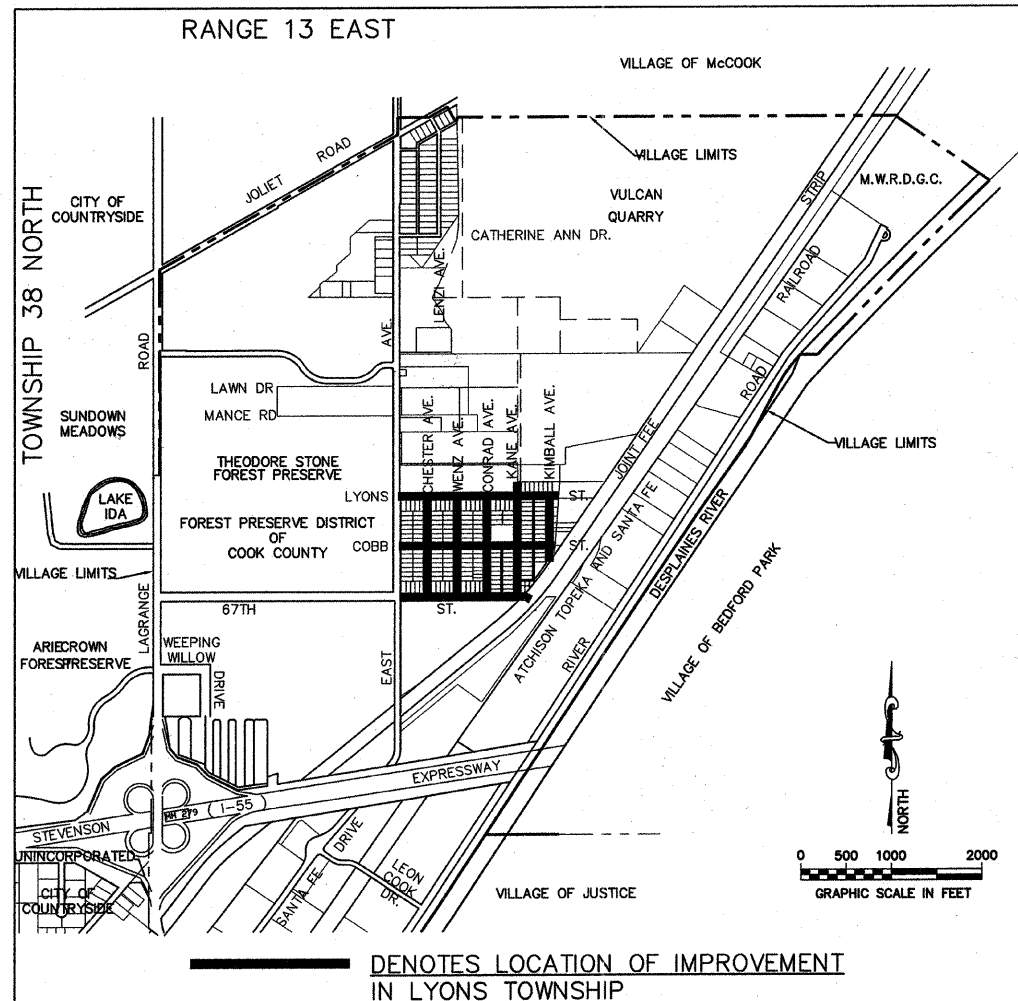
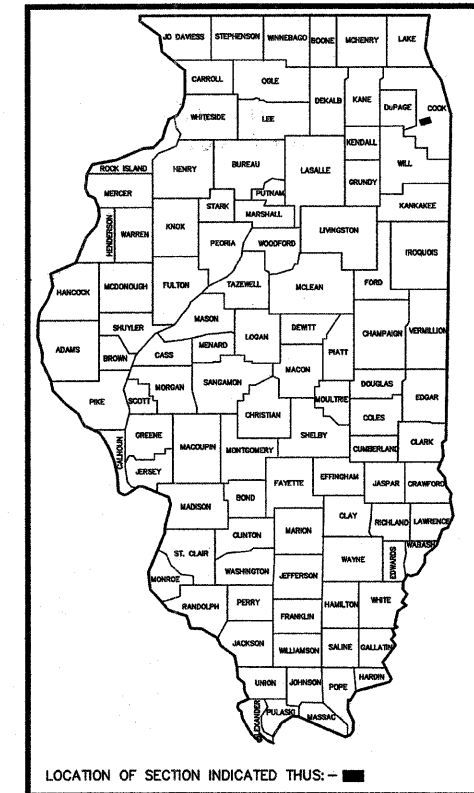


FULL SIZE PLANS HAVE BEEN PREPARED USING STANDARD ENGINEERING SCALES. REDUCED SIZED PLANS WILL NOT CONFORM TO STANDARD SCALES. IN MAKING MEASUREMENTS ON REDUCED PLANS, THE ABOVE SCALES MAY BE USED.



STATE OF ILLINOIS
DEPARTMENT OF TRANSPORTATION
DIVISION OF HIGHWAYS
**PLANS FOR PROPOSED
FEDERAL AID HIGHWAY**
VARIOUS ROUTES
LAPP STREET RESURFACING
FEDERAL PROJECT HPP-3461(002)
SECTION NO. 09-00016-00-RS
VILLAGE OF HODGKINS
COOK COUNTY
JOB NO. C-91-361-09

FAU RTE	SECTION	COUNTY	TOTAL SHEETS	SHEET NO.
VARIOUS	09-00016-00-RS	COOK	18	1
F.H.W.A. REG.	ILLINOIS PROJECT	HPP-3461(002)	CONTRACT NO. 63204	



— DENOTES LOCATION OF IMPROVEMENT IN LYONS TOWNSHIP

LOCATION MAP

LENGTH OF PROJECT

GROSS LENGTH OF PROJECT 9,656 FEET (1.8288 MILES)
NET LENGTH OF PROJECT 9,309 FEET (1.7631 MILES)

STATE OF ILLINOIS
DEPARTMENT OF TRANSPORTATION
DIVISION OF HIGHWAYS

APPROVED MAY 26 2009

VILLAGE PRESIDENT Noel B. Cummings
NOEL B. CUMMINGS, PRESIDENT

PASSED MAY 26, 2009
Christina Holt
DISTRICT #1 ENGINEER OF LOCAL ROADS & STREETS

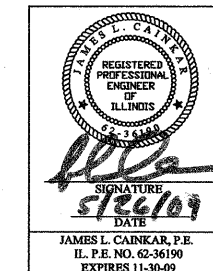
RELEASING FOR BID BASED ON LIMITED REVIEW MAY 29, 2009
Diana M. O'Keefe
DEPUTY DIRECTOR OF HIGHWAYS, REGION #1 ENGINEER

PROJECT LOCATED IN THE VILLAGE OF HODGKINS

PRINTED BY THE AUTHORITY OF THE STATE OF ILLINOIS

SEE SHEET 3 FOR DESIGN DETAILS

TRAFFIC DATA:
ADT (2009): 400
POSTED SPEED LIMIT = 20 MPH
DESIGN SPEED LIMIT = 20 MPH



CONTRACT NO. 63204

REVISIONS			
NO.	BY	DATE	DESCRIPTION
1	JLC	5-20-09	PER I.D.O.T. REVIEW

FIELD ENGINEER: MARILYN SOLOMON (847)705-4407
CONSULTANT: FRANK NOVOTNY AND ASSOCIATES, INC. (630)887-8640

Frank Novotny & Associates, Inc.
826 Midway Drive • Willowbrook, IL • 60527 • Telephone: (630) 887-8640 • Fax: (630) 887-0132
ILLINOIS PROFESSIONAL DESIGN FIRM NO. 184-000928

FNA JOB # 09055

GENERAL CONSTRUCTION NOTES PAVING AND STORM SEWERS

SPECIFICATIONS
THE LATEST EDITIONS OF THE "STANDARD SPECIFICATIONS FOR ROAD AND BRIDGE CONSTRUCTION", THE "SUPPLEMENTAL SPECIFICATIONS AND RECURRING SPECIAL PROVISIONS", PREPARED BY THE ILLINOIS DEPARTMENT OF TRANSPORTATION AND THE "MANUAL OF UNIFORM TRAFFIC CONTROL DEVICES" SHALL GOVERN ALL WORK ASSOCIATED WITH THIS PROJECT. THE "STANDARD SPECIFICATIONS FOR WATER AND SEWER MAIN CONSTRUCTION IN ILLINOIS" MAY GOVERN OTHER WORK ON THIS PROJECT AS INDICATED BY REFERENCE.

CARE IN EXCAVATION
CARE SHALL BE EXERCISED BY THE CONTRACTOR IN CARRYING OUT EARTH AND/OR TRENCHING OPERATIONS SO THAT LOCAL SERVICES, WATER VALVES, MANHOLES, CATCH BASINS, INLETS, BUFFALO BOXES, AND OTHER STRUCTURES ARE NOT DAMAGED OR REMOVED. ANY DAMAGE DONE BY THE CONTRACTOR, WHETHER THE STRUCTURE OR SERVICE IS VISIBLE AT THE GROUND SURFACE OR NOT, SHALL BE REPAIRED OR REPLACED BY THE CONTRACTOR AS REQUIRED BY THE ENGINEER AT THE CONTRACTOR'S EXPENSE, AND NO ADDITIONAL COMPENSATION WILL BE ALLOWED.

NOTIFICATION OF PUBLIC UTILITIES
PRIOR TO STARTING CONSTRUCTION, THE CONTRACTOR SHALL NOTIFY THE OFFICIALS OF THE PUBLIC WORKS DEPARTMENT OF THE LOCAL MUNICIPALITY, J.U.L.I.E. AT 1-800-892-0123, AND OTHER PUBLIC AND PRIVATE UTILITIES SO THAT ARRANGEMENTS CAN BE MADE TO LOCATE THEIR VARIOUS FACILITIES WITHIN THE LIMITS OF CONSTRUCTION UNDER THIS CONTRACT, AS WELL AS TO PROVIDE ADEQUATE PROTECTION AND INSPECTION THERETO. IT SHALL BE THIS CONTRACTOR'S RESPONSIBILITY TO DETERMINE THE ACTUAL LOCATION OF ALL SUCH FACILITIES IN THE FIELD.

TRAFFIC CONTROL DEVICES
BARRICADES AND WARNING SIGNS SHALL BE PROVIDED IN ACCORDANCE WITH ARTICLE 107.14 OF THE "STANDARD SPECIFICATIONS FOR ROAD AND BRIDGE CONSTRUCTION". ADEQUATE LIGHTING SHALL BE MAINTAINED FROM DUSK TO DAWN AT ALL LOCATIONS WHERE CONSTRUCTION OPERATIONS WARRANT, OR AS DESIGNATED BY THE ENGINEER.

PROTECTION OF SIGNS AND PROPERTY
ALL TRAFFIC SIGNS, STREET SIGNS, ETC., THAT INTERFERE WITH THE CONSTRUCTION OPERATIONS SHALL BE REMOVED AND PLACED AT NEW LOCATIONS AS DESIGNATED BY THE ENGINEER. THIS WORK SHALL BE CONSIDERED INCIDENTAL TO THE CONTRACT, AND NO ADDITIONAL COMPENSATION WILL BE ALLOWED. IN ADDITION, ALL MAIL BOXES THAT INTERFERE WITH CONSTRUCTION SHALL BE SIMILARLY RELOCATED AT NO ADDITIONAL COST IN ACCORDANCE WITH ARTICLES 107.20 AND 107.21 OF THE "STANDARD SPECIFICATIONS FOR ROAD AND BRIDGE CONSTRUCTION".

SUPERINTENDENCE
SPECIAL ATTENTION IS DRAWN TO ARTICLE 105.08 OF THE "STANDARD SPECIFICATIONS FOR ROAD AND BRIDGE CONSTRUCTION" WHICH REQUIRES THE CONTRACTOR TO HAVE A COMPETENT SUPERINTENDENT ON THE PROJECT SITE AT ALL TIMES, IRRESPECTIVE OF THE AMOUNT OF WORK. THE SUPERINTENDENT SHALL BE CAPABLE OF READING AND UNDERSTANDING THE PLANS AND SPECIFICATIONS, SHALL HAVE FULL AUTHORITY TO EXECUTE ORDERS TO EXPEDITE THE PROJECT AND SHALL BE RESPONSIBLE FOR SCHEDULING AND HAVING CONTROL OF ALL THE WORK AS THE AGENT OF THE GENERAL CONTRACTOR. FAILURE TO COMPLY WITH THIS PROVISION WILL RESULT IN A SUSPENSION OF WORK AS PROVIDED IN ARTICLE 108.07.

SAWING EXISTING IMPROVEMENTS
ALL PERMANENT TYPE PAVEMENTS OR OTHER PERMANENT IMPROVEMENTS WHICH ABUT THE PROPOSED IMPROVEMENT AND MUST BE REMOVED, SHALL BE SAWED AS DIRECTED PRIOR TO REMOVAL. ALL ITEMS SO REMOVED SHALL BE REPLACED WITH SIMILAR CONSTRUCTION MATERIALS TO THEIR ORIGINAL CONDITION OR BETTER. PAYMENT FOR SAWING SHALL BE INCLUDED IN THE COST FOR THE REMOVAL OF EACH ITEM, AND REPLACEMENT WILL BE PAID FOR UNDER THE RESPECTIVE ITEMS IN THE CONTRACT UNLESS OTHERWISE INDICATED. SAW CUTTING FOR PATCHES WILL BE INCIDENTAL TO THE PATCHING ITEM.

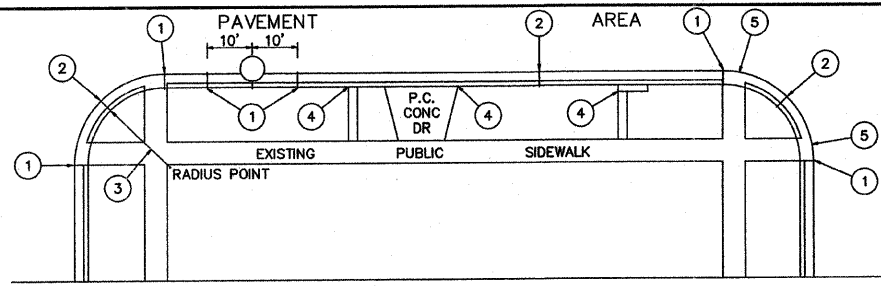
CONSTRUCTION LAYOUT STAKES
THE CONTRACTOR SHALL PROVIDE THE ENGINEER WITH WOODEN STAKES OR OTHER LAYOUT MATERIALS FOR LAYOUT OF THE LINES AND GRADES OF THE PROJECT. FAILURE TO PROVIDE STAKES IN A TIMELY MANNER WILL RESULT IN A DELAY IN STAKEOUT WHICH WILL BE APPLICABLE AGAINST THE TIME LIMIT FOR COMPLETION SHOWN IN THE PROJECT SPECIFICATIONS. LINE AND GRADE WILL BE ESTABLISHED BY THE ENGINEER AT REGULAR INTERVALS ON PERMANENTLY PAVED SURFACES, SIDEWALKS OR STAKES AT THE ENGINEER'S OPTION, ALL WITHIN THE PUBLIC RIGHT-OF-WAY AND SHALL BE TRANSFERRED BY THE CONTRACTOR TO THE ACTUAL LINE OF CONSTRUCTION.

PROJECT SAFETY
BARRICADES: THE CONTRACTOR SHALL PROVIDE AND INSTALL TWO (2) WEIGHTED SAND BAGS ON EACH TYPE I OR TYPE II BARRICADE USED ONE (1) WEIGHTED SAND BAG ACROSS EACH BOTTOM RAIL.
WHEN MILLED PAVEMENT IS OPEN TO TRAFFIC THE MAXIMUM GRADE DIFFERENTIAL BETWEEN PASSES OF THE MILLING MACHINE SHALL NOT EXCEED 1-1/2 INCHES WHERE THE SPEED LIMIT IS 45 MPH OR LESS AND 1 INCH WHERE THE SPEED LIMIT IS GREATER THAN 45 MPH. WITH WRITTEN APPROVAL FROM THE ENGINEER, A MAXIMUM GRADE DIFFERENTIAL OF 3 INCHES MAY BE ALLOWED IF THE EDGE OF THE MILLING IS SLOPED A MINIMUM 1:3 (V:H).

BUTT JOINTS WILL BE INSTALLED AT THE ENDS OF ALL RESURFACING (WHERE RESURFACING MEETS EXISTING PAVEMENT), IN ACCORDANCE WITH THE "BUTT JOINT AND HOT-MIX ASPHALT TAPER DETAILS" SHEET INCLUDED IN THE PLANS, UNLESS OTHERWISE SPECIFIED.
THE CONTRACTOR SHALL COMPLY WITH AND OBSERVE THE RULES AND REGULATIONS OF O.S.H.A. AND APPROPRIATE AUTHORITIES REGARDING SAFETY PROVISIONS. THE CONTRACTOR, ENGINEER, AND OWNER SHALL EACH BE RESPONSIBLE FOR THEIR OWN RESPECTIVE AGENTS AND EMPLOYEES.

THE ENGINEER AND OWNER ARE NOT RESPONSIBLE FOR THE CONSTRUCTION MEANS, METHODS, TECHNIQUES, SEQUENCES OR PROCEDURES, TIME OF PERFORMANCE, PROGRAMS, OR FOR ANY SAFETY PRECAUTIONS USED BY THE CONTRACTOR. THE CONTRACTOR IS SOLELY RESPONSIBLE FOR EXECUTION OF HIS WORK IN ACCORDANCE WITH THE DOCUMENTS AND SPECIFICATIONS.

ALL ITEMS ASSOCIATED WITH CURB AND GUTTER, DRIVEWAYS AND PATCHING WILL NOT EXCEED THE QUANTITIES LISTED IN THE SUMMARY OF QUANTITIES.



- EXPANSION JOINTS AT TANGENT POINTS AND 150 FOOT INTERVALS, CONSISTING OF ONE INCH PREMOLDED JOINT FILLER MATERIAL WITH #8 DOWEL BARS, 18" IN LENGTH, GREASED, PROVIDE EXPANSION CAP ON ONE END. ALSO CONSTRUCT THIS JOINT TEN FEET EACH SIDE OF PROPOSED UNDERGROUND STRUCTURE.
- CONTRACTION JOINTS AT TWENTY-FIVE FOOT INTERVALS AND AT THE CENTER OF RETURNS.
- ALL RADII SHALL BE 25 FEET TO THE BACK OF CURB UNLESS OTHERWISE DIRECTED BY THE ENGINEER.
- LONGITUDINAL EXPANSION JOINT CONSISTING OF ONE INCH PREMOLDED JOINT FILLER.
- DEPRESS CURB AT LOCATIONS WHERE PUBLIC WALKS INTERSECT CURB LINE AT STREET INTERSECTIONS, ALLEYS, AND OTHER LOCATIONS AS DIRECTED, FOR THE CONSTRUCTION OF RAMPED SIDEWALKS FOR ACCESS BY THE HANDICAPPED.

JOINT DETAILS

SUMMARY OF QUANTITIES

Item No	Description	Unit	Construction											
			Code 1000	Quantity	67th St.	Cobb St.	Lyons St.	Chester Ave.	Wenz Ave.	Conrad Ave.	Kane Ave.	Kimball Ave.	Misc.	
21101615	TOPSOIL FURNISH AND PLACE, 4"	SQ YD	513	63	121	114	78	43	51	17	26			
25200100	SODDING	SQ YD	513	63	121	114	78	43	51	17	26			
40600200	BITUMINOUS MATERIALS (PRIME COAT)	TON	15	2.1	2.7	3.3	1.4	1.4	1.4	1.8	0.9			
40600300	AGGREGATE (PRIME COAT)	TON	37	5.1	6.5	7.8	3.5	3.5	4	4.3	2.3			
40600625	LEVELING BINDER (MACHINE METHOD), N50	TON	2040	289	364	441	194	194	192	240	126			
40600895	CONSTRUCTING TEST STRIP	EACH	1										1	
40600982	HOT-MIX ASPHALT SURFACE REMOVAL-BUTT JOINT	SQ YD	95	33	25	37								
40603310	HOT-MIX ASPHALT SURFACE COURSE, MIX "C", N50	TON	3561	503	635	767	340	340	336	420	220			
40800050	INCIDENTAL HOT-MIX ASPHALT SURFACING	TON	47	8.9	17	4.8	12.8		2		1.5			
42000300	PORTLAND CEMENT CONCRETE PAVEMENT, 8"	SQ YD	20			20								
42400200	PORTLAND CEMENT CONCRETE SIDEWALK, 5"	SQ FT	212	23	85	104								
42400800	DETECTABLE WARNINGS	SQ FT	630	90	315	225								
44000100	PAVEMENT REMOVAL	SQ YD	20			20								
44000158	HOT-MIX ASPHALT SURFACE REMOVAL, 2-1/4"	SQ YD	36330	5136	6475	7830	3465	3467	3425	4284	2248			
44000200	DRIVEWAY PAVEMENT REMOVAL	SQ YD	293	53	101.2	41.9	76.1		11.9		8.9			
44000600	SIDEWALK REMOVAL	SQ FT	212	23	85	104								
44201737	CLASS D PATCHES, TYPE I, 8"	SQ YD	120										120	
44201741	CLASS D PATCHES, TYPE II, 8"	SQ YD	300										300	
44201745	CLASS D PATCHES, TYPE III, 8"	SQ YD	433						33				400	
44201747	CLASS D PATCHES, TYPE IV, 8"	SQ YD	529				129						400	
44300300	AREA REFLECTIVE CRACK CONTROL TREATMENT, SYSTEM A	SQ YD	36425	5169	6500	7867	3465	3467	3425	4284	2248			
60250200	CATCH BASINS TO BE ADJUSTED	EACH	68	11	15	17	5	5	4	3	8			
60255500	MANHOLES TO BE ADJUSTED	EACH	4			3		1						
60266600	VALVE BOXES TO BE ADJUSTED	EACH	2	1		1								
60300310	FRAMES AND LIDS TO BE ADJUSTED (SPECIAL)	EACH	38	6	4	13	4	3	2	2	4			
60406000	FRAMES AND LIDS, TYPE 1, OPEN LID	EACH	1		1									
67100100	MOBILIZATION	L SUM	1										1	
70101700	TRAFFIC CONTROL AND PROTECTION	L SUM	1										1	
* 78000100	THERMOPLASTIC PAVEMENT MARKING - LETTERS AND SYMBOLS	SQ FT	65								65			
* 78000200	THERMOPLASTIC PAVEMENT MARKING - LINE 4"	FOOT	5096	1914		2078				1104				
* 78000400	THERMOPLASTIC PAVEMENT MARKING - LINE 6"	FOOT	2433	303	778	577	252	253			270			
* 78000600	THERMOPLASTIC PAVEMENT MARKING - LINE 12"	FOOT	1728		594	540			274	318				
* 78000650	THERMOPLASTIC PAVEMENT MARKING - LINE 24"	FOOT	980	83	314	268	60	60	66	68	61			
* XX003435	PORTLAND CEMENT CONCRETE DRIVEWAY REMOVAL AND REPLACEMENT	S.Y.	378	63.9		115	62.3	54	60.2	14.9	7.7			
44001700	COMBINATION CONCRETE CURB+GUTTER REMOVAL+REPL.	FOOT	2696	290	506	791	365	316	192	108	128			
XX006395	SHOTCRETE CURB AND GUTTER REPAIR	FOOT	600	42	23	47	56	61	63	58	51		199	
Z0048685	RAILROAD PROTECTIVE LIABILITY INSURANCE	L SUM	1										1	

* SPECIALTY ITEM

Frank Novotny & Associates, Inc.
Civil Engineers / Municipal Consultants
825 Midway Drive • Willowbrook, IL • 60527 • Telephone: (630) 887-8640 • Fax: (630) 887-0132
Illinois Professional Design Firm No. 184-000928

PROJECT: VILLAGE OF HODGKINS, ILLINOIS
LAPP STREET RESURFACING
MFT SECTION NO. 09-00016-00-RS

REVISIONS			
NO.	BY	DATE	DESCRIPTION
1	JLC	5-20-09	PER I.D.O.T. REVIEW

GENERAL NOTES
JOINT DETAILS
SUMMARY OF QUANTITIES

PROJECT NO. 09055	SCALE NONE	SHEET 2 OF 18 SHEETS
DRAWN/DESIGNED JFP/JLC	DATE APR., 2009	
CHECKED/APPROVED JLC	FIELD BOOK NO. FILE	

FAU RTE	SECTION	COUNTY	TOTAL SHEETS	SHEET NO.
VARIOUS	09-00016-00-RS	COOK	18	3
F.H.W.A. REG.	ILLINOIS	PROJECT	HPP-3461(002)	

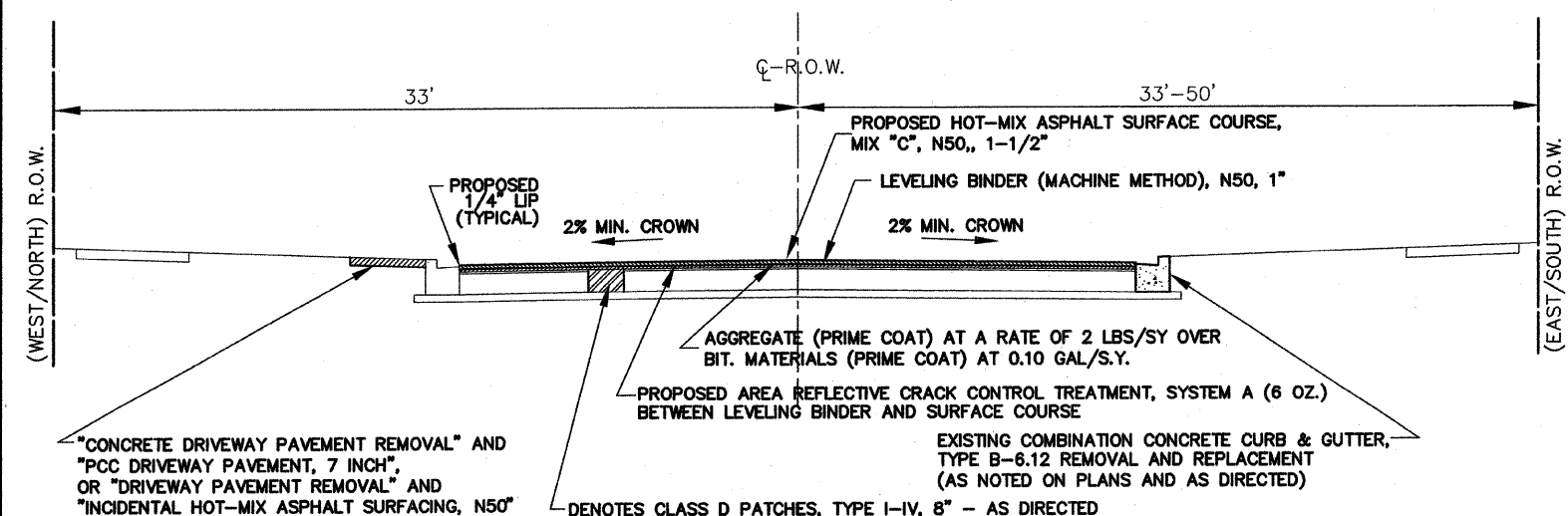
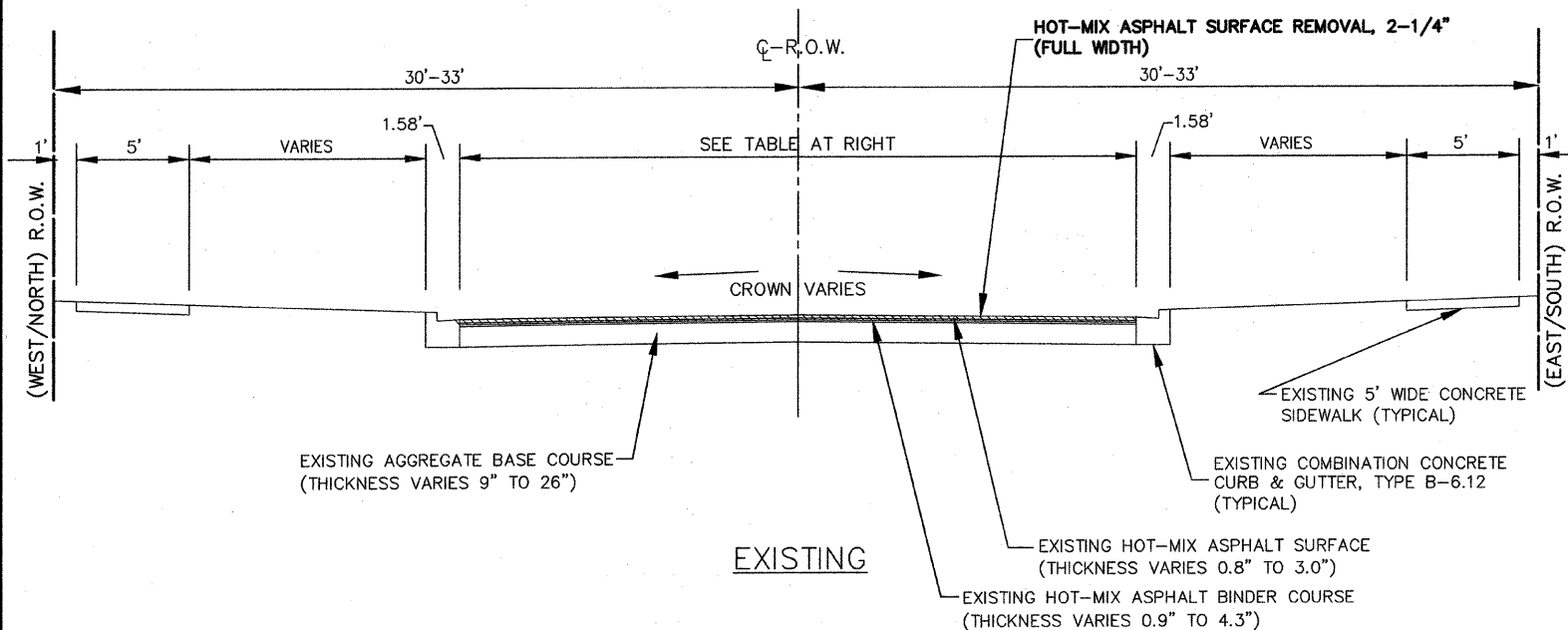
CONTRACT NO. 63204

NOTE: CONTRACTOR SHALL MILL BEFORE PATCHING.

HOT-MIX ASPHALT MIXTURE REQUIREMENTS

MIXTURE TYPE	AC TYPE	PERCENT AIR VOIDS
ROADWAY		
HOT-MIX ASPHALT SURFACE COURSE, MIX "C", N50, 1-1/2" (IL-9.5mm)	PG 64-22	4% @ 50 GYR
LEVELING BINDER (MACHINE METHOD), IL 9.5, N50, 1"	*PG 64-22	4% @ 50 GYR
DRIVEWAYS		
INCIDENTAL HOT-MIX ASPHALT SURFACING, MIX "C", N50, (IL 9.5 mm), 3"	PG 64-22	4% @ 50 GYR
PATCHING		
CLASS D PATCHES, TYPE I-IV, 8", (HMA BINDER IL-19.0mm)	*PG 64-22	4% @ 70 GYR

THE UNIT WEIGHT TO CALCULATE ALL HOT-MIX ASPHALT SURFACE MIXTURE QUANTITIES IS 112 LBS/SQ YD/IN.
* WHEN RAP EXCEEDS 20%, THE NEW ASPHALT BINDER IN THE MIX SHALL BE PG 58-22.



TYPICAL CROSS SECTIONS

SCALE: 1"=4'

STREET INFORMATION TABLE

STREET NAME	GROSS LENGTH (IN FEET)	NET LENGTH (IN FEET)	CURB TYPE	DESIGN TRAFFIC: ADT=	E-E DIMENSION (FT.)	R.O.W. DIMENSION (FT.)
LYONS STREET - EAST AVE. TO KANE AVE.	1,295	1,295	B-6.12	400	39.8	60
LYONS STREET - KANE AVE. TO KIMBALL AVE.	459	459	B-6.12	400	31.7	60
COBB STREET - EAST AVE. TO CONRAD AVE.	959	959	B-6.12	400	28.4	66
COBB STREET - CONRAD AVE. TO KANE AVE.	330	330	B-6.12	400	34.2	66
COBB STREET - KANE AVE. TO KIMBALL AVE.	408	408	B-6.12	400	28.0	66
67th STREET - EAST AVE. TO EAST OF KANE AVE.	1,215	1,215	B-6.12	400	34.0	63
CHESTER AVENUE - 67th ST. TO LYONS ST.	1,044	978	B-6.12	400	32.1	66
WENZ AVENUE - 67th ST. TO LYONS ST.	1,044	978	B-6.12	400	32.4	66
CONRAD AVENUE - 67th ST. TO LYONS ST.	1,041	964	B-6.12	400	32.0	66
KANE AVENUE - 67th ST. TO LYONS ST.	1,035	959	B-6.12	400	37.0	66
KANE AVENUE - LYONS ST. TO NORTH OF LYONS ST.	128	128	B-6.12	400	28.4	66
KIMBALL AVENUE - SOUTH OF COBB ST. TO LYONS ST.	698	636	B-6.12	400	32.0	60
TOTAL	9,656	9,309				

IMPORTANT!
FULL SIZE PLANS HAVE BEEN PREPARED USING STANDARD ENGINEERING SCALES. REDUCED SIZED PLANS WILL NOT CONFORM TO STANDARD SCALES INDICATED IN TITLE BLOCK.

Frank Novotny & Associates, Inc.
Civil Engineers/Municipal Consultants
825 Midway Drive • Willowbrook, IL • 60527 • Telephone: (630) 887-8640 • Fax: (630) 887-0132
Illinois Professional Design Firm No. 184-000928

PROJECT **VILLAGE OF HODGKINS, ILLINOIS STREET RESURFACING**
MFT SECTION NO. 09-00016-00-RS

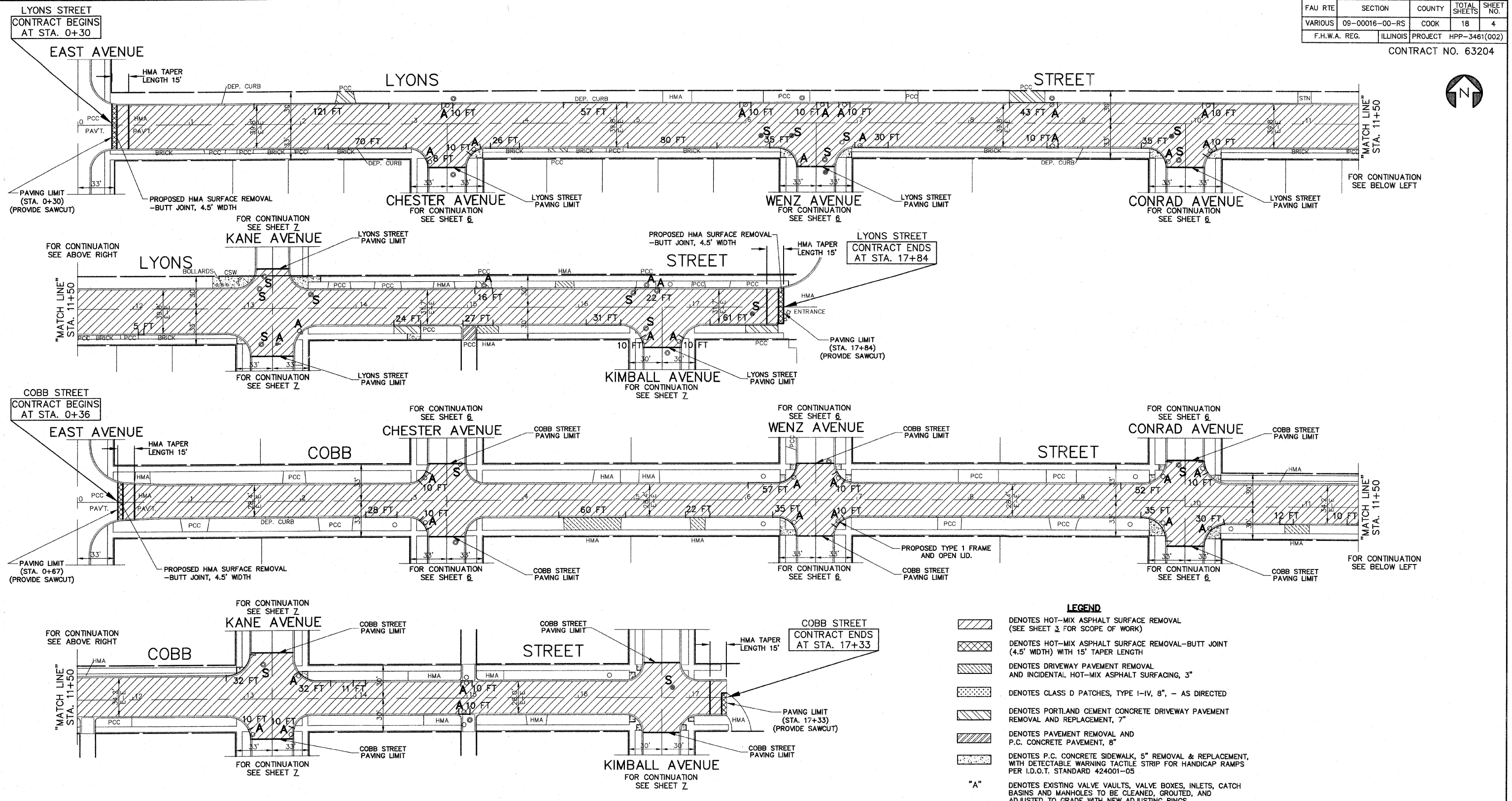
REVISIONS			
NO.	BY	DATE	DESCRIPTION
1	JLC	5-20-09	PER I.D.O.T. REVIEW

TYPICAL CROSS SECTIONS
HOT-MIX ASPHALT MIXTURE REQUIREMENTS

PROJECT NO. 09055
SCALE 1"=4'
DRAWN/DESIGNED JFP/JLC DATE APR., 2009
CHECKED/APPROVED JLC FIELD BOOK NO. FILE
SHEET 3 OF 18 SHEETS

FAU RTE	SECTION	COUNTY	TOTAL SHEETS	SHEET NO.
VARIOUS	09-00016-00-RS	COOK	18	4
F.H.W.A. REG.	ILLINOIS PROJECT	HPP-3461(002)		

CONTRACT NO. 63204



- LEGEND**
- DENOTES HOT-MIX ASPHALT SURFACE REMOVAL (SEE SHEET 3 FOR SCOPE OF WORK)
 - DENOTES HOT-MIX ASPHALT SURFACE REMOVAL-BUTT JOINT (4.5' WIDTH) WITH 15' TAPER LENGTH
 - DENOTES DRIVEWAY PAVEMENT REMOVAL AND INCIDENTAL HOT-MIX ASPHALT SURFACING, 3"
 - DENOTES CLASS D PATCHES, TYPE I-IV, 8", - AS DIRECTED
 - DENOTES PORTLAND CEMENT CONCRETE DRIVEWAY PAVEMENT REMOVAL AND REPLACEMENT, 7"
 - DENOTES PAVEMENT REMOVAL AND P.C. CONCRETE PAVEMENT, 8"
 - DENOTES P.C. CONCRETE SIDEWALK, 5" REMOVAL & REPLACEMENT, WITH DETECTABLE WARNING TACTILE STRIP FOR HANDICAP RAMPS PER I.D.O.T. STANDARD 424001-05
 - "A" DENOTES EXISTING VALVE VAULTS, VALVE BOXES, INLETS, CATCH BASINS AND MANHOLES TO BE CLEANED, GROUTED, AND ADJUSTED TO GRADE WITH NEW ADJUSTING RINGS. (ALL TOP BANDS OF FALLEN, COMMON OR CONCRETE BRICK TO BE REPLACED WITH PRECAST CONCRETE ADJUSTING RINGS)
 - "S" DENOTES EXISTING STRUCTURES TO BE ADJUSTED (SPECIAL) (SEE SHEET 1Z FOR DETAIL)
 - DENOTES COMBINATION CONCRETE CURB & GUTTER REMOVAL AND REPLACEMENT PROVIDE DETECTABLE WARNINGS AND RAMPS AT ALL SIDEWALK
 - DENOTES EXISTING SIDEWALK RAMP TO REMAIN

NOTE:
FOR CONTINUATION OF NORTH-SOUTH STREETS TO BE RESURFACED, SEE SHEET 5

NOTE:
1) ALL SAW CUTS SHALL BE CONSIDERED INCIDENTAL TO THE CONTRACT

IMPORTANT!
FULL SIZE PLANS HAVE BEEN PREPARED USING STANDARD ENGINEERING SCALES. REDUCED SIZE PLANS WILL NOT CONFORM TO STANDARD SCALES INDICATED IN TITLE BLOCK.

FOR TYPICAL CROSS SECTION OF NEW PAVEMENT WORK SEE SHEET 3

Frank Novotny & Associates, Inc.
 Civil Engineers/Municipal Consultants
 825 Midway Drive • Willowbrook, IL • 60527 • Telephone: (630) 887-8640 • Fax: (630) 887-0132
 Illinois Professional Design Firm No. 184-000928

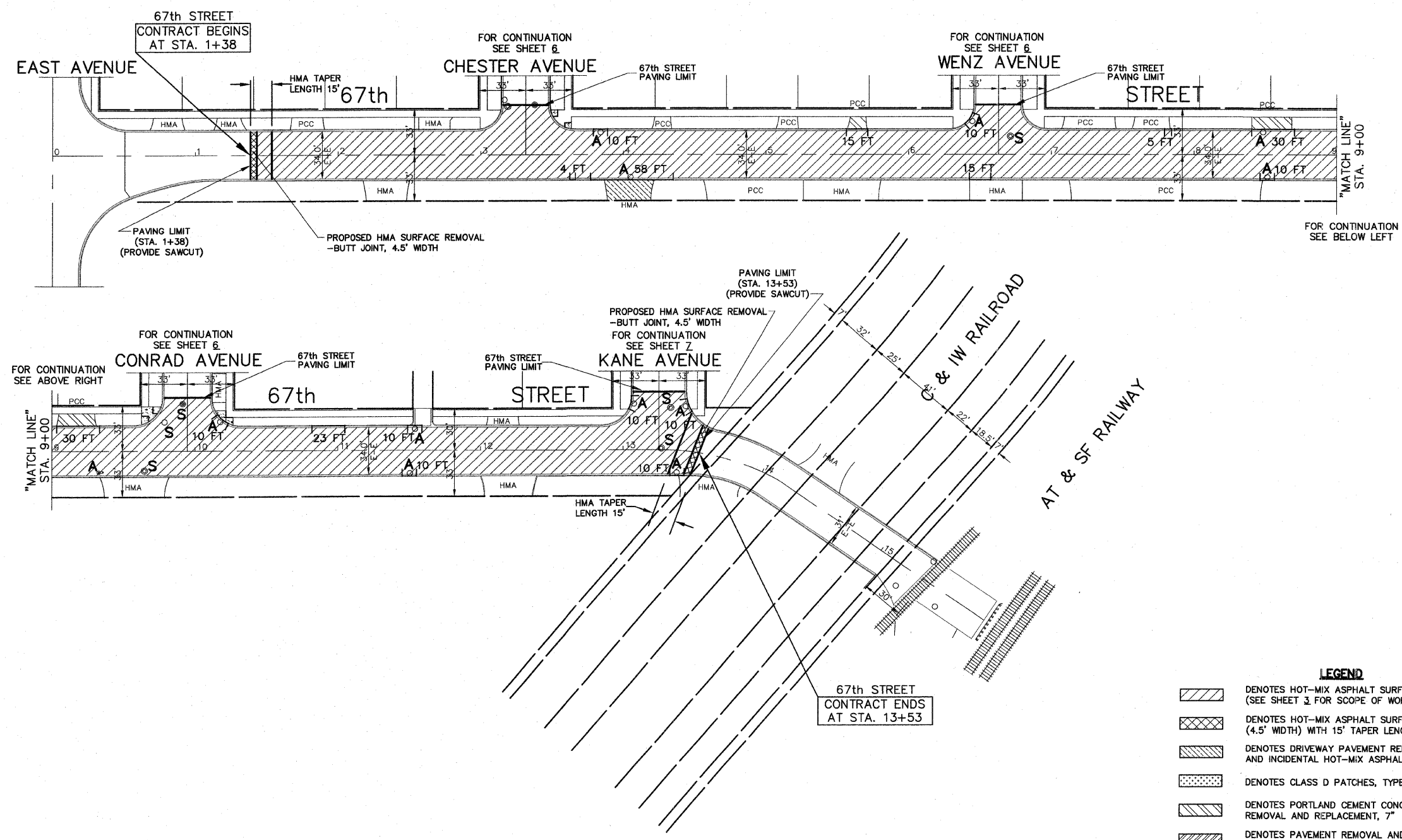
PROJECT
VILLAGE OF HODGKINS, ILLINOIS
LAPP STREET RESURFACING
 MFT SECTION NO. 09-00016-00-RS

REVISIONS			
NO.	BY	DATE	DESCRIPTION

PLAN:
 LYONS STREET - EAST AVE. TO EAST OF KIMBALL AVE.
 COBB STREET - EAST AVE. TO KIMBALL AVE.

PROJECT NO. 09055	SCALE 1"=40'	SHEET 4 OF 18 SHEETS
DRAWN/DESIGNED JFP/JLC	DATE APR., 2009	
CHECKED/APPROVED JLC	FIELD BOOK NO. FILE	

(RESURFACING)



- LEGEND**
- DENOTES HOT-MIX ASPHALT SURFACE REMOVAL (SEE SHEET 3 FOR SCOPE OF WORK)
 - DENOTES HOT-MIX ASPHALT SURFACE REMOVAL-BUTT JOINT (4.5' WIDTH) WITH 15' TAPER LENGTH
 - DENOTES DRIVEWAY PAVEMENT REMOVAL AND INCIDENTAL HOT-MIX ASPHALT SURFACING, 3"
 - DENOTES CLASS D PATCHES, TYPE I-IV, 8" - AS DIRECTED
 - DENOTES PORTLAND CEMENT CONCRETE DRIVEWAY PAVEMENT REMOVAL AND REPLACEMENT, 7"
 - DENOTES PAVEMENT REMOVAL AND P.C. CONCRETE PAVEMENT, 8"
 - DENOTES P.C. CONCRETE SIDEWALK, 5" REMOVAL & REPLACEMENT, WITH DETECTABLE WARNING TACTILE STRIP FOR HANDICAP RAMPS PER I.D.O.T. STANDARD 424001-05
 - "A"
 - "S"
 - 8 FT
 - DENOTES EXISTING SIDEWALK RAMP TO REMAIN

NOTE:
FOR CONTINUATION OF NORTH-SOUTH STREETS TO BE RESURFACED, SEE SHEET 5.

NOTE:
1) ALL SAW CUTS SHALL BE CONSIDERED INCIDENTAL TO THE CONTRACT

IMPORTANT!
FULL SIZE PLANS HAVE BEEN PREPARED USING STANDARD ENGINEERING SCALES. REDUCED SIZE PLANS WILL NOT CONFORM TO STANDARD SCALES INDICATED IN TITLE BLOCK.

FOR TYPICAL CROSS SECTION OF NEW PAVEMENT WORK SEE SHEET 3

Frank Novotny & Associates, Inc.
 Civil Engineers/Municipal Consultants
 825 Midway Drive • Willowbrook, IL • 60527 • Telephone: (630) 887-8640 • Fax: (630) 887-0132
 Illinois Professional Design Firm No. 184-000928

PROJECT
VILLAGE OF HODGKINS, ILLINOIS
LAPP STREET RESURFACING
 MFT SECTION NO. 09-00016-00-RS

REVISIONS			
NO.	BY	DATE	DESCRIPTION

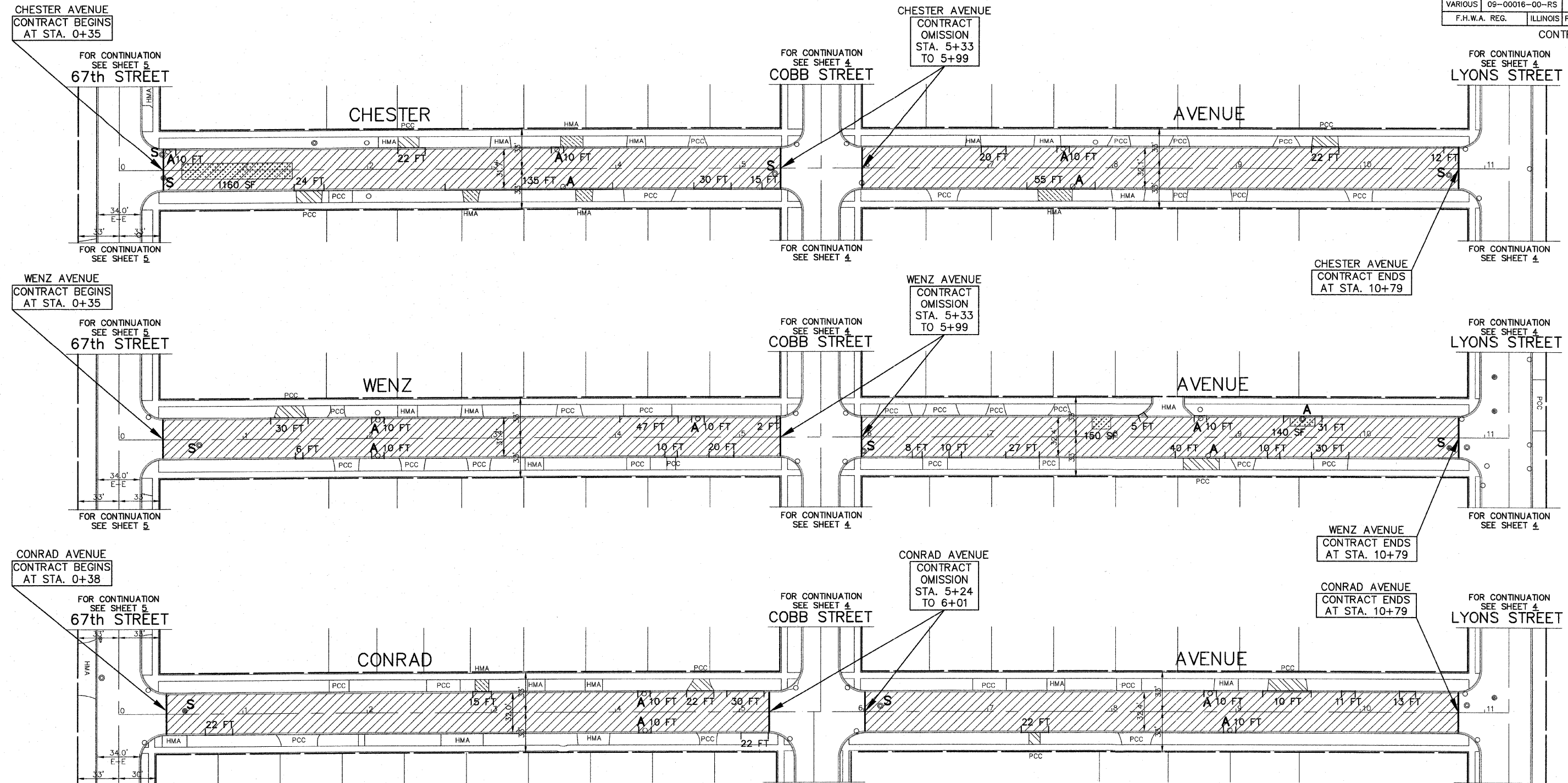
PLAN:
 67th STREET -
 EAST AVE. TO EAST KANE AVE.

PROJECT NO. 09055	SCALE 1"=40'	SHEET 5 OF 18 SHEETS
DRAWN/DESIGNED JFP/JLC	DATE APR., 2009	
CHECKED/APPROVED JLC	FIELD BOOK NO. FILE	

(RESURFACING)

FAU RTE	SECTION	COUNTY	TOTAL SHEETS	SHEET NO.
VARIOUS	09-00016-00-RS	COOK	18	6
F.H.W.A. REG.	ILLINOIS	PROJECT	HPP-3461(002)	

CONTRACT NO. 63204



NOTE:
FOR CONTINUATION OF NORTH-SOUTH STREETS TO BE RESURFACED, SEE SHEET 5

NOTE:
1) ALL SAW CUTS SHALL BE CONSIDERED INCIDENTAL TO THE CONTRACT

- LEGEND**
- DENOTES HOT-MIX ASPHALT SURFACE REMOVAL (SEE SHEET 3 FOR SCOPE OF WORK)
 - DENOTES HOT-MIX ASPHALT SURFACE REMOVAL-BUTT JOINT (4.5' WIDTH) WITH 15' TAPER LENGTH
 - DENOTES DRIVEWAY PAVEMENT REMOVAL AND INCIDENTAL HOT-MIX ASPHALT SURFACING, 3"
 - DENOTES CLASS D PATCHES, TYPE I-IV, 8", - AS DIRECTED
 - DENOTES PORTLAND CEMENT CONCRETE DRIVEWAY PAVEMENT REMOVAL AND REPLACEMENT, 7"
 - DENOTES PAVEMENT REMOVAL AND P.C. CONCRETE PAVEMENT, 8"
 - DENOTES P.C. CONCRETE SIDEWALK, 5" REMOVAL & REPLACEMENT, WITH DETECTABLE WARNING TACTILE STRIP FOR HANDICAP RAMPS PER I.D.O.T. STANDARD 424001-05
 - "A"** DENOTES EXISTING VALVE VAULTS, VALVE BOXES, INLETS, CATCH BASINS AND MANHOLES TO BE CLEANED, GROUTED, AND ADJUSTED TO GRADE WITH NEW ADJUSTING RINGS. (ALL TOP BANDS OF FALLEN, COMMON OR CONCRETE BRICK TO BE REPLACED WITH PRECAST CONCRETE ADJUSTING RINGS)
 - "S"** DENOTES EXISTING STRUCTURES TO BE ADJUSTED (SPECIAL) (SEE SHEET 12 FOR DETAIL)
 - DENOTES COMBINATION CONCRETE CURB & GUTTER REMOVAL AND REPLACEMENT PROVIDE DETECTABLE WARNINGS AND RAMPS AT ALL SIDEWALK
 - DENOTES EXISTING SIDEWALK RAMP TO REMAIN

IMPORTANT!
FULL SIZE PLANS HAVE BEEN PREPARED USING STANDARD ENGINEERING SCALES. REDUCED SIZED PLANS WILL NOT CONFORM TO STANDARD SCALES INDICATED IN TITLE BLOCK.

FOR TYPICAL CROSS SECTION OF NEW PAVEMENT WORK SEE SHEET 3

Frank Novotny & Associates, Inc.
Civil Engineers/Municipal Consultants
825 Midway Drive • Willowbrook, IL • 60527 • Telephone: (630) 887-8640 • Fax: (630) 887-0132
Illinois Professional Design Firm No. 184-000928

PROJECT
VILLAGE OF HODGKINS, ILLINOIS
LAPP STREET RESURFACING
MFT SECTION NO. 09-00016-00-RS

REVISIONS			
NO.	BY	DATE	DESCRIPTION

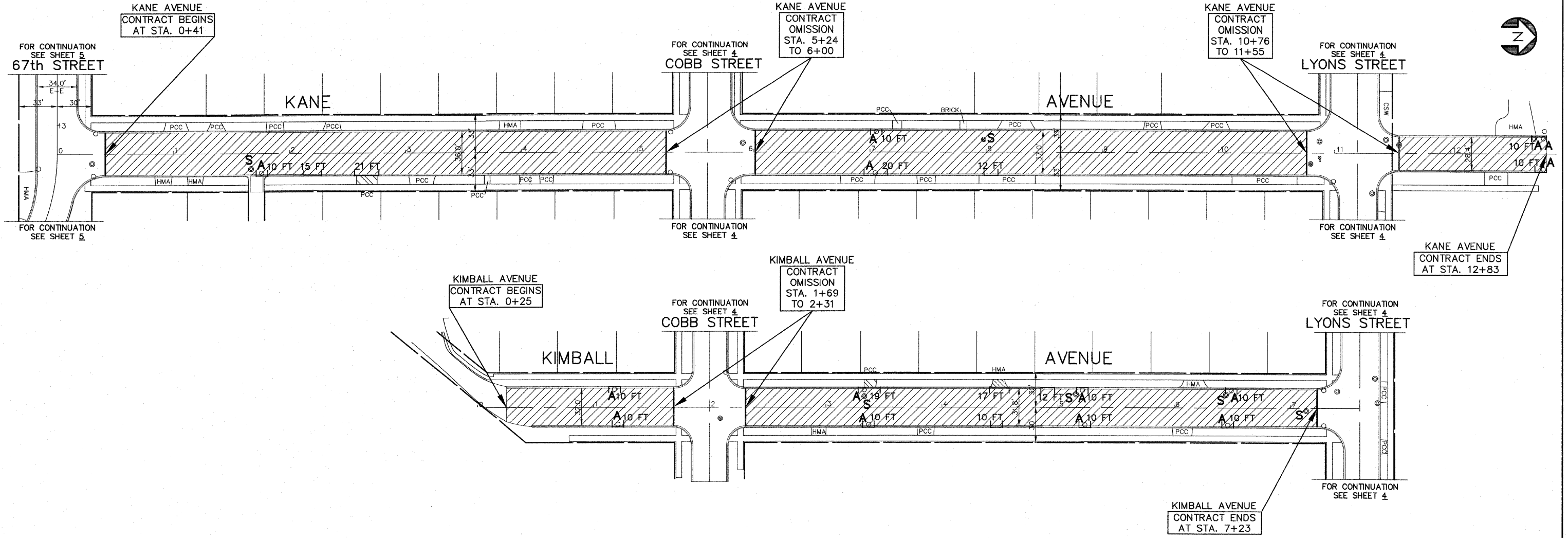
PLAN:
CHESTER AVENUE - 67th ST. TO LYONS ST.
WENZ AVENUE - 67th ST. TO LYONS ST.
CONRAD AVENUE - 67th ST. TO LYONS ST.

PROJECT NO. 09055	SCALE 1"=40'	SHEET 6 OF 18 SHEETS
DRAWN/DESIGNED JFP/JLC	DATE APR., 2009	
CHECKED/APPROVED JLC	FIELD BOOK NO. FILE	

(RESURFACING)

FAU RTE	SECTION	COUNTY	TOTAL SHEETS	SHEET NO.
VARIOUS	09-00016-00-RS	COOK	18	7
F.H.W.A. REG.	ILLINOIS	PROJECT	HPP-3461(002)	

CONTRACT NO. 63204



NOTE:
FOR CONTINUATION OF NORTH-SOUTH STREETS TO BE RESURFACED, SEE SHEET 5

FOR TYPICAL CROSS SECTION OF NEW PAVEMENT WORK SEE SHEET 3

NOTE:
1) ALL SAW CUTS SHALL BE CONSIDERED INCIDENTAL TO THE CONTRACT

LEGEND

- DENOTES HOT-MIX ASPHALT SURFACE REMOVAL (SEE SHEET 3 FOR SCOPE OF WORK)
- DENOTES HOT-MIX ASPHALT SURFACE REMOVAL-BUTT JOINT (4.5' WIDTH) WITH 15' TAPER LENGTH
- DENOTES DRIVEWAY PAVEMENT REMOVAL AND INCIDENTAL HOT-MIX ASPHALT SURFACING, 3"
- DENOTES CLASS D PATCHES, TYPE I-IV, 8", - AS DIRECTED
- DENOTES PORTLAND CEMENT CONCRETE DRIVEWAY PAVEMENT REMOVAL AND REPLACEMENT, 7"
- DENOTES PAVEMENT REMOVAL AND P.C. CONCRETE PAVEMENT, 8"
- DENOTES P.C. CONCRETE SIDEWALK, 5" REMOVAL & REPLACEMENT, WITH DETECTABLE WARNING TACTILE STRIP FOR HANDICAP RAMPS PER I.D.O.T. STANDARD 424001-05
- "A" DENOTES EXISTING VALVE VAULTS, VALVE BOXES, INLETS, CATCH BASINS AND MANHOLES TO BE CLEANED, GROUTED, AND ADJUSTED TO GRADE WITH NEW ADJUSTING RINGS. (ALL TOP BANDS OF FALLEN, COMMON OR CONCRETE BRICK TO BE REPLACED WITH PRECAST CONCRETE ADJUSTING RINGS)
- "S" DENOTES EXISTING STRUCTURES TO BE ADJUSTED (SPECIAL) (SEE SHEET 1Z FOR DETAIL)
- DENOTES COMBINATION CONCRETE CURB & GUTTER REMOVAL AND REPLACEMENT PROVIDE DETECTABLE WARNINGS AND RAMPS AT ALL SIDEWALK
- DENOTES EXISTING SIDEWALK RAMP TO REMAIN

IMPORTANT!
FULL SIZE PLANS HAVE BEEN PREPARED USING STANDARD ENGINEERING SCALES. REDUCED SIZED PLANS WILL NOT CONFORM TO STANDARD SCALES INDICATED IN TITLE BLOCK.

Frank Novotny & Associates, Inc.
Civil Engineers/Municipal Consultants
825 Midway Drive • Willowbrook, IL • 60527 • Telephone: (630) 887-8640 • Fax: (630) 887-0132
Illinois Professional Design Firm No. 184-000928

PROJECT
VILLAGE OF HODGKINS, ILLINOIS
LAPP STREET RESURFACING
MFT SECTION NO. 09-00016-00-RS

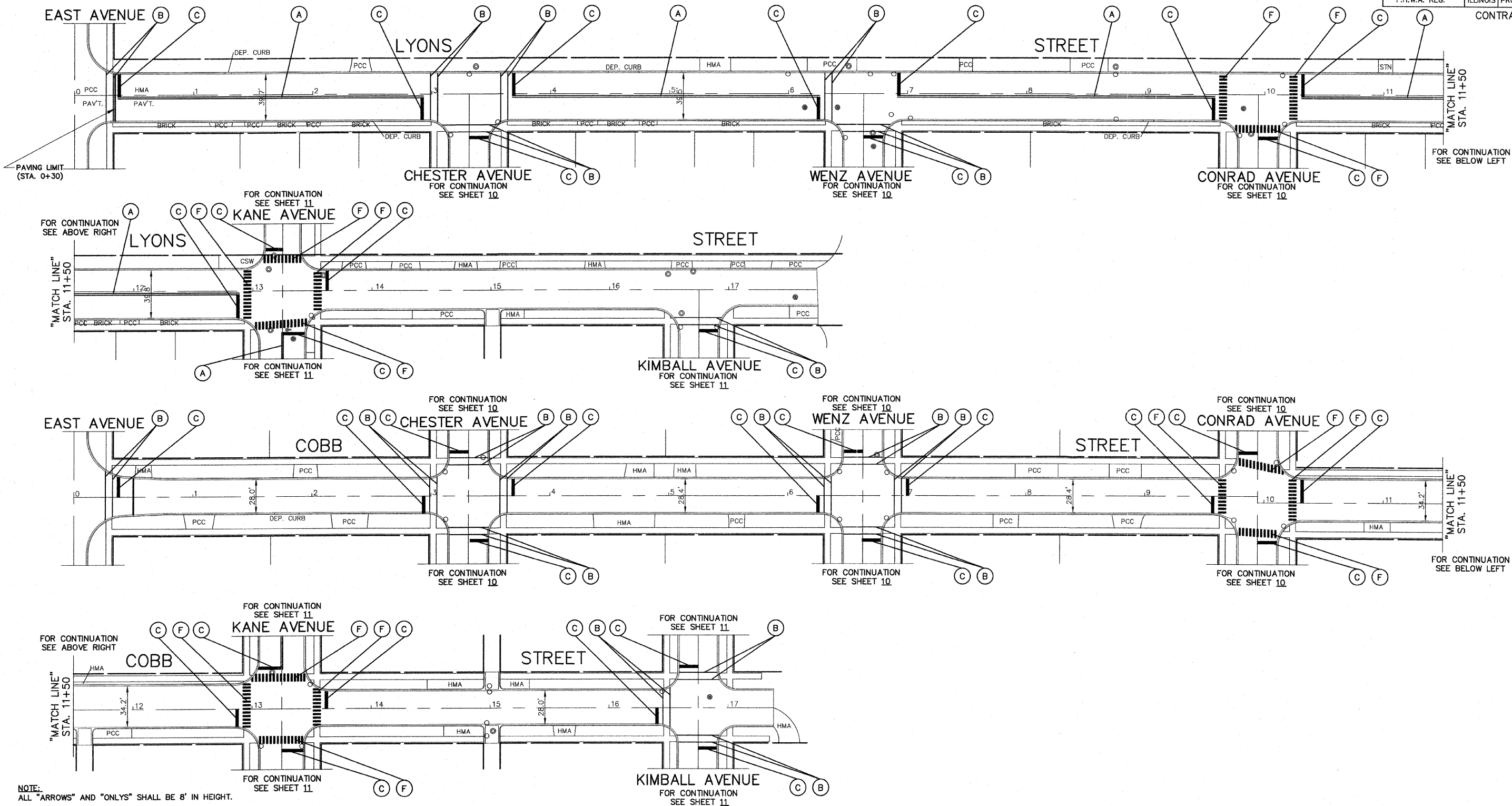
REVISIONS			
NO.	BY	DATE	DESCRIPTION

PLAN:
KANE AVENUE -
67th ST. TO NORTH OF LYONS ST.
KIMBALL AVENUE -
SOUTH OF COBB ST. TO LYONS ST.

PROJECT NO. 09055	SCALE 1"=40'	SHEET 7 OF 18 SHEETS
DRAWN/DESIGNED JFP/JLC	DATE APR., 2009	
CHECKED/APPROVED JLC	FIELD BOOK NO. FILE	

(RESURFACING)

U:\Projects\2009\09055_HPP_Resurfacing\09055_Plan_07_R1.dwg - 05-11-2009 8:15:45 AM - User: JFP



NOTE:
ALL "ARROWS" AND "ONLAYS" SHALL BE 8" IN HEIGHT.

NOTE:
PROPOSED DOUBLE SOLID YELLOW THERMOPLASTIC PAVEMENT MARKING - CENTER LINE 4", 11" O/C (NOTE: (B)) IS MEASURED PER LINE. TOTAL QUANTITY AND PAYMENT LENGTH IS FOR EACH LINEAR FOOT OF SINGLE 4" STRIPE INSTALLED.

NOTE:
SHORT-TERM PAVEMENT MARKING IS PROPOSED ON THE NEW BINDER AND ON THE NEW SURFACE. SEE ARTICLE 703.04 OF THE LATEST EDITION OF THE "STANDARD SPECIFICATIONS FOR ROAD AND BRIDGE CONSTRUCTION".

- THERMOPLASTIC STRIPING CODE**
- (A) PROPOSED DOUBLE SOLID YELLOW THERMOPLASTIC PAVEMENT MARKING - CENTER LINE 4", 11" O/C
 - (B) PROPOSED SOLID WHITE THERMOPLASTIC PAVEMENT MARKING - LINE 6" (CROSSWALK LINE)
 - (C) PROPOSED SOLID WHITE THERMOPLASTIC PAVEMENT MARKING - LINE 24" (STOP BAR)
 - (F) PROPOSED SOLID WHITE THERMOPLASTIC PAVEMENT MARKING - LINE 12" (PEDESTRIAN SCHOOL CROSSING)

IMPORTANT!

FULL SIZE PLANS HAVE BEEN PREPARED USING STANDARD ENGINEERING SCALES. REDUCED SIZED PLANS WILL NOT CONFORM TO STANDARD SCALES INDICATED IN TITLE BLOCK.

Frank Novotny & Associates, Inc.
825 Midway Drive • Willowbrook, IL • 60527 • Telephone: (630) 887-8640 • Fax: (630) 887-0132
Illinois Professional Design Firm No. 184-000928

PROJECT
VILLAGE OF HODGKINS, ILLINOIS
LAPP STREET RESURFACING
MFT SECTION NO. 09-00016-00-RS

REVISIONS			
NO.	BY	DATE	DESCRIPTION
1	JLC	5-20-09	PER I.D.O.T. REVIEW

PLAN:
LYONS STREET - EAST AVE. TO EAST OF KIMBALL AVE.
COBB STREET - EAST AVE. TO KIMBALL AVE.

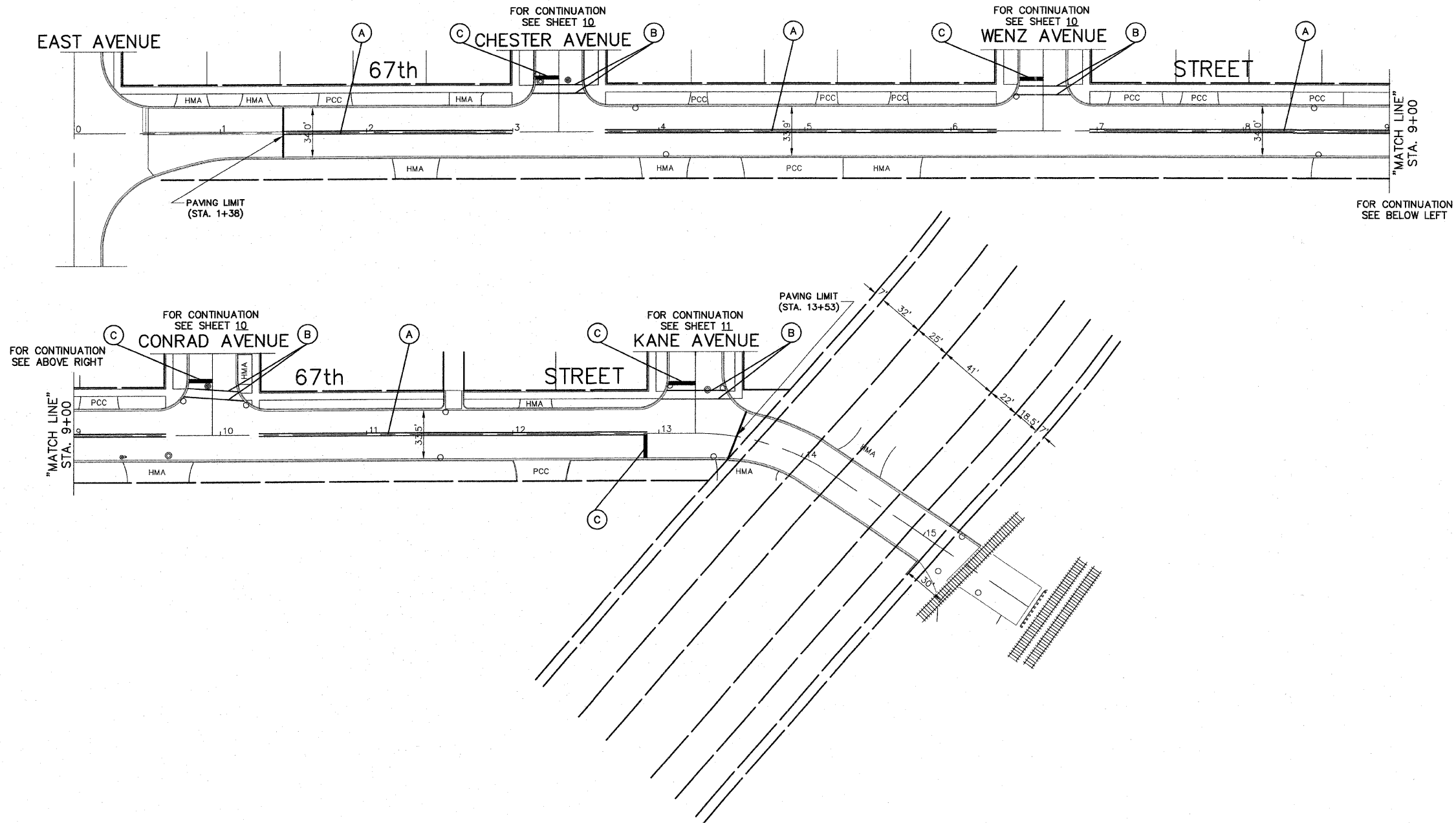
PROJECT NO. 09055	SCALE 1"=40'	SHEET 8
DRAWN/DESIGNED JFP/JLC	DATE APR., 2009	OF 18
CHECKED/APPROVED JLC	FIELD BOOK NO. FILE	SHEETS

(PAVEMENT MARKINGS)

I:\Projects\09055\09055_2009_PPP_Rev\Drawings\09055_S01_04_02_P.MKT_09-11_SPP.mxd, 3/19/2009, 9:15:54 AM, V:\SPR\66-31\09055

FAU RTE	SECTION	COUNTY	TOTAL SHEETS	SHEET NO.
VARIOUS	09-00016-00-RS	COOK	18	9
F.H.W.A. REG.	ILLINOIS PROJECT	HPP-3461(002)		

CONTRACT NO. 63204



NOTE:
ALL "ARROWS" AND "ONLAYS" SHALL BE 8" IN HEIGHT.

NOTE:
PROPOSED DOUBLE SOLID YELLOW THERMOPLASTIC PAVEMENT MARKING - CENTER LINE 4", 11" O/C IS MEASURED PER LINE. TOTAL QUANTITY AND PAYMENT LENGTH IS FOR EACH LINEAR FOOT OF SINGLE 4" STRIPE INSTALLED.

NOTE:
SHORT-TERM PAVEMENT MARKING IS PROPOSED ON THE NEW BINDER AND ON THE NEW SURFACE. SEE ARTICLE 703.04 OF THE LATEST EDITION OF THE "STANDARD SPECIFICATIONS FOR ROAD AND BRIDGE CONSTRUCTION".

THERMOPLASTIC STRIPING CODE

- (A) PROPOSED DOUBLE SOLID YELLOW THERMOPLASTIC PAVEMENT MARKING - CENTER LINE 4", 11" O/C
- (B) PROPOSED SOLID WHITE THERMOPLASTIC PAVEMENT MARKING - LINE 6" (CROSSWALK LINE)
- (C) PROPOSED SOLID WHITE THERMOPLASTIC PAVEMENT MARKING - LINE 24" (STOP BAR)

IMPORTANT!
FULL SIZE PLANS HAVE BEEN PREPARED USING STANDARD ENGINEERING SCALES. REDUCED SIZED PLANS WILL NOT CONFORM TO STANDARD SCALES INDICATED IN TITLE BLOCK.

Frank Novotny & Associates, Inc.
Civil Engineers/
Municipal Consultants
825 Midway Drive • Willowbrook, IL • 60527 • Telephone: (630) 887-8640 • Fax: (630) 887-0132
Illinois Professional Design Firm No. 184-000928

PROJECT
VILLAGE OF HODGKINS, ILLINOIS
LAPP STREET RESURFACING
MFT SECTION NO. 09-00016-00-RS

R E V I S I O N S			
NO.	BY	DATE	DESCRIPTION

PLAN:
67th STREET -
EAST AVE. TO EAST KANE AVE.

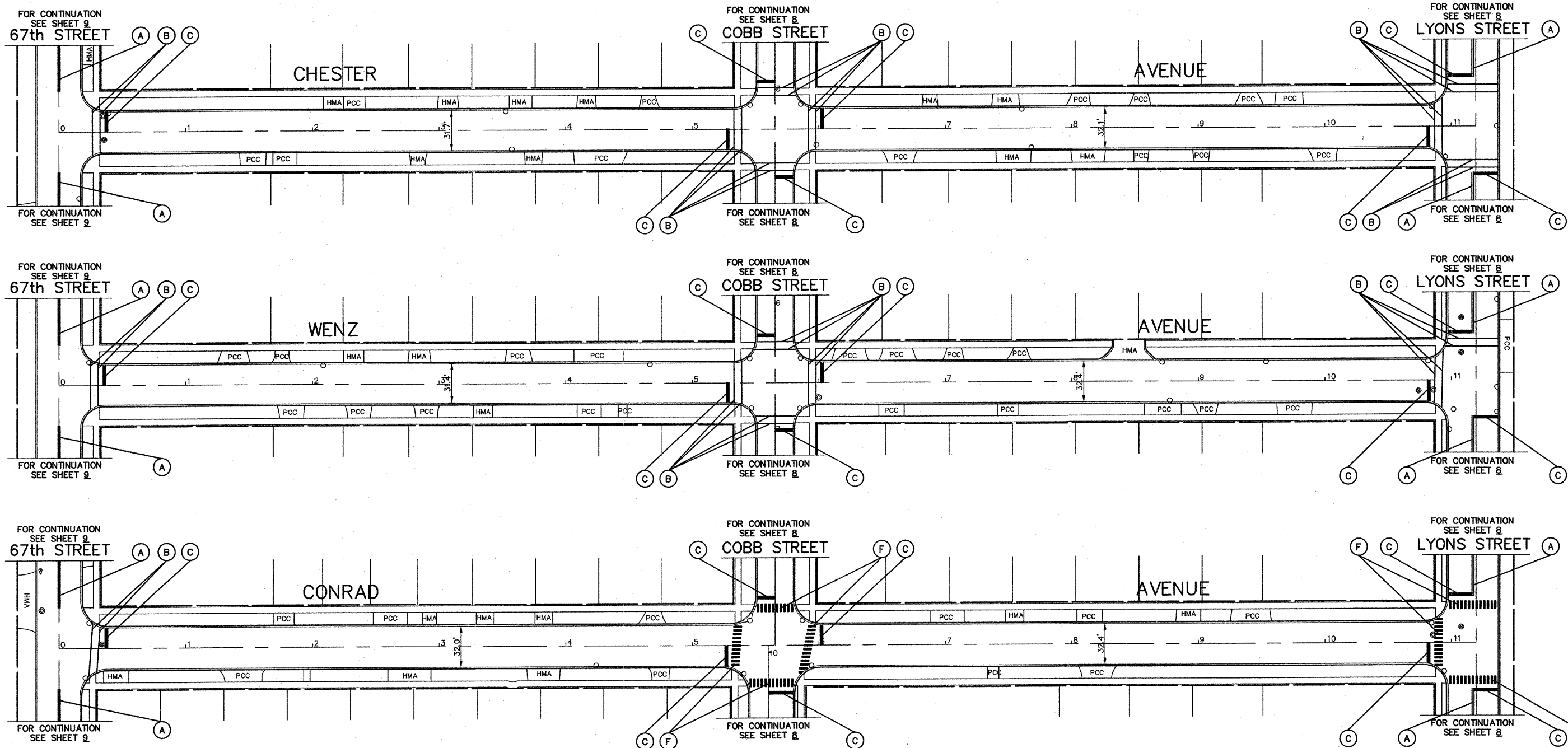
PROJECT NO. 09055	SCALE 1"=40'	SHEET 9 OF 18 SHEETS
DRAWN/DESIGNED JFP/JLC	DATE APR., 2009	
CHECKED/APPROVED JLC	FIELD BOOK NO. FILE	

(PAVEMENT MARKINGS)

M:\Hodgkins\09055_2009\APP_Resources\09055_Sht_04.dwg P:\BIS - 08-11-2009 9:15:45 AM \JFP\JLC

FAU RTE	SECTION	COUNTY	TOTAL SHEETS	SHEET NO.
VARIOUS	09-00016-00-RS	COOK	18	10
F.H.W.A. REG.	ILLINOIS	PROJECT	HPP-3461(002)	

CONTRACT NO. 63204



NOTE:
ALL "ARROWS" AND "ONLYS" SHALL BE 8" IN HEIGHT.

NOTE:
PROPOSED DOUBLE SOLID YELLOW THERMOPLASTIC PAVEMENT MARKING - CENTER LINE 4", 11" O/C IS MEASURED PER LINE. TOTAL QUANTITY AND PAYMENT LENGTH IS FOR EACH LINEAR FOOT OF SINGLE 4" STRIPE INSTALLED.

NOTE:
SHORT-TERM PAVEMENT MARKING IS PROPOSED ON THE NEW BINDER AND ON THE NEW SURFACE. SEE ARTICLE 703.04 OF THE LATEST EDITION OF THE "STANDARD SPECIFICATIONS FOR ROAD AND BRIDGE CONSTRUCTION".

THERMOPLASTIC STRIPING CODE

- (A) PROPOSED DOUBLE SOLID YELLOW THERMOPLASTIC PAVEMENT MARKING - CENTER LINE 4", 11" O/C
- (B) PROPOSED SOLID WHITE THERMOPLASTIC PAVEMENT MARKING - LINE 6" (CROSSWALK LINE)
- (C) PROPOSED SOLID WHITE THERMOPLASTIC PAVEMENT MARKING - LINE 24" (STOP BAR)
- (F) PROPOSED SOLID WHITE THERMOPLASTIC PAVEMENT MARKING - LINE 12" (PEDESTRIAN SCHOOL CROSSING)

IMPORTANT!
FULL SIZE PLANS HAVE BEEN PREPARED USING STANDARD ENGINEERING SCALES. REDUCED SIZED PLANS WILL NOT CONFORM TO STANDARD SCALES INDICATED IN TITLE BLOCK.

Frank Novotny & Associates, Inc.
Civil Engineers/Municipal Consultants
825 Midway Drive ♦ Willowbrook, IL ♦ 60527 ♦ Telephone: (630) 887-8640 ♦ Fax: (630) 887-0132
Illinois Professional Design Firm No. 184-000928

PROJECT
VILLAGE OF HODGKINS, ILLINOIS
LAPP STREET RESURFACING
MFT SECTION NO. 09-00016-00-RS

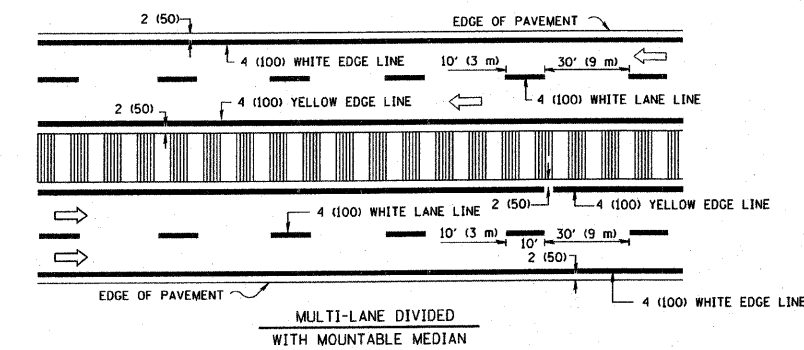
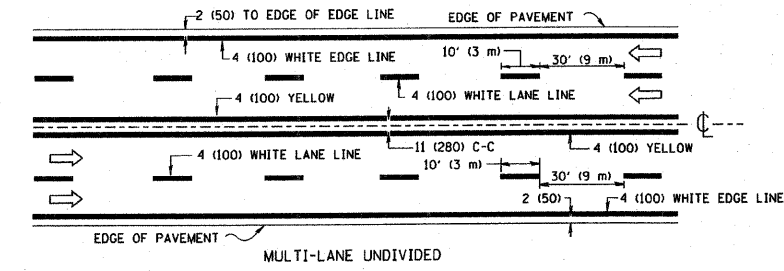
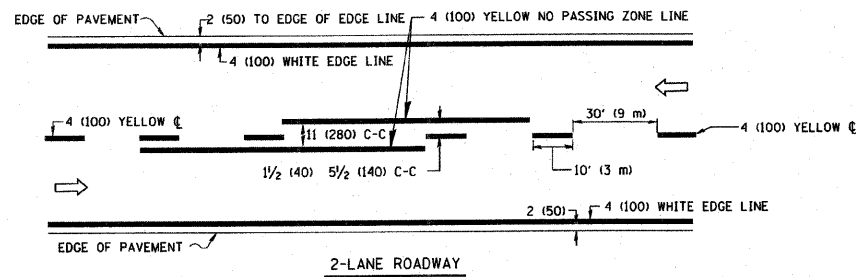
REVISIONS			
NO.	BY	DATE	DESCRIPTION

PLAN:
CHESTER AVENUE - 67th ST. TO LYONS ST.
WENZ AVENUE - 67th ST. TO LYONS ST.
CONRAD AVENUE - 67th ST. TO LYONS ST.

PROJECT NO. 09055	SCALE 1"=40'
DRAWN/DESIGNED JFP/JLC	DATE APR., 2009
CHECKED/APPROVED JLC	FIELD BOOK NO. FILE

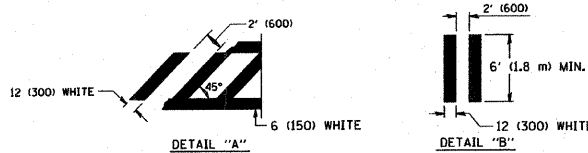
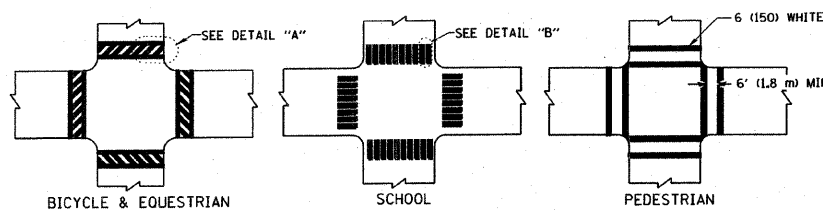
SHEET
10
OF
18
SHEETS

(PAVEMENT MARKINGS)

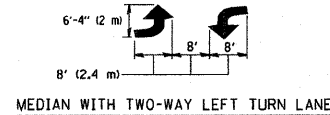
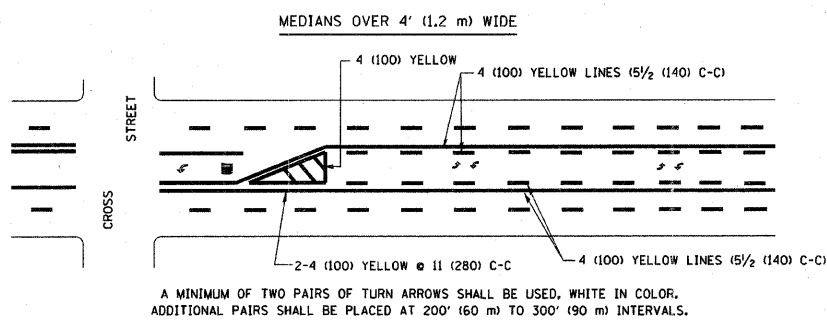
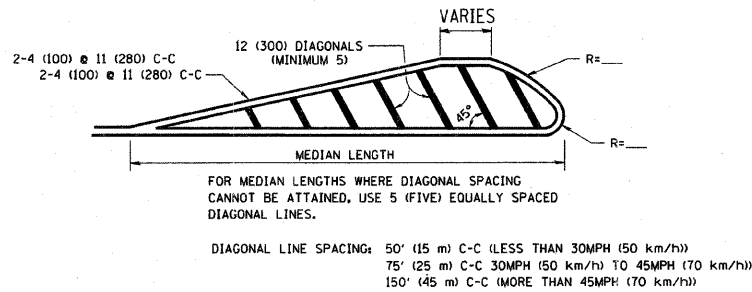
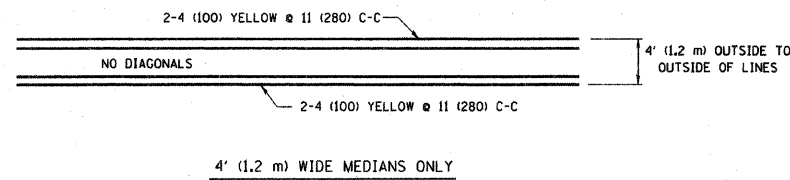


NOTE: MEDIANS WITH BARRIER CURB DO NOT REQUIRE AN EDGE LINE

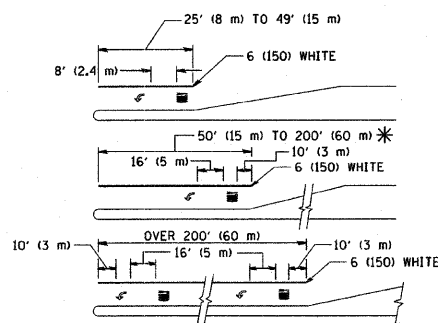
TYPICAL LANE AND EDGE LINE MARKING



TYPICAL CROSSWALK MARKING



TYPICAL PAINTED MEDIAN MARKING

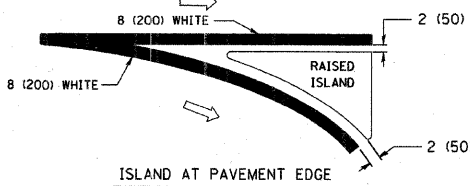
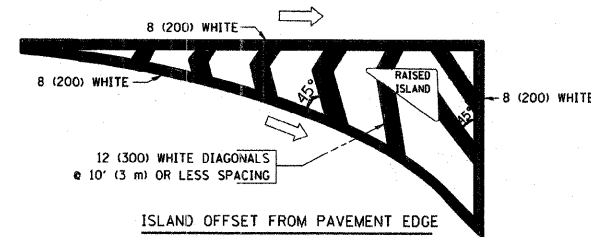


FULL SIZE LETTERS 8' (2.4 m) AND ARROWS SHALL BE USED.
AREA = 15.6 SQ. FT. (1.5 m²) ONLY AREA = 20.8 SQ. FT. (1.9 m²)

* TURN LANES IN EXCESS OF 400' (120 m) IN LENGTH MAY HAVE AN ADDITIONAL SET OF ARROW - "ONLY" INSTALLED MIDWAY BETWEEN THE OTHER TWO SETS OF ARROW - "ONLY".

TYPICAL LEFT (OR RIGHT) TURN LANE

TYPICAL TURN LANE MARKING



TYPICAL ISLAND MARKING

TYPE OF MARKING	WIDTH OF LINE	PATTERN	COLOR	SPACING / REMARKS
CENTERLINE ON 2 LANE PAVEMENT	4 (100)	SKIP-DASH	YELLOW	10' (3 m) LINE WITH 30' (9 m) SPACE
CENTERLINE ON MULTI-LANE UNDIVIDED PAVEMENT	2 @ 4 (100)	SOLID	YELLOW	11 (280) C-C
NO PASSING ZONE LINES FOR ONE DIRECTION FOR BOTH DIRECTIONS	4 (100) 2 @ 4 (100)	SOLID SOLID	YELLOW YELLOW	5/2 (140) C-C FROM SKIP-DASH CENTERLINE 11 (280) C-C OMIT SKIP-DASH CENTERLINE BETWEEN
LANE LINES	4 (100) 5 (125) ON FREEWAYS	SKIP-DASH SKIP-DASH	WHITE WHITE	10' (3 m) LINE WITH 30' (9 m) SPACE
DOTTED LINES (EXTENSIONS OF CENTER, LANE OR TURN LANE MARKINGS)	SAME AS LINE BEING EXTENDED	SKIP-DASH	SAME AS LINE BEING EXTENDED	2' (600) LINE WITH 6' (1.8 m) SPACE
EDGE LINES	4 (100)	SOLID	YELLOW-LEFT WHITE-RIGHT	OUTLINE MOUNTABLE MEDIANS IN YELLOW; EDGE LINES ARE NOT USED NEXT TO BARRIER CURB
TURN LANE MARKINGS	6 (150) LINE; FULL SIZE LETTERS & SYMBOLS (8' (2.4m))	SOLID	WHITE	SEE TYPICAL TURN LANE MARKING DETAIL
TWO WAY LEFT TURN MARKING	2 @ 4 (100) EACH DIRECTION 8' (2.4m) LEFT ARROW	SKIP-DASH AND SOLID IN PAIRS	YELLOW WHITE	10' (3 m) LINE WITH 30' (9 m) SPACE FOR SKIP-DASH; 5/2 (140) C-C BETWEEN SOLID LINE AND SKIP-DASH LINE SEE TYPICAL TWO-WAY LEFT TURN MARKING DETAIL
CROSSWALK LINES (PEDESTRIAN) A. DIAGONALS (BIKE & EQUESTRIAN) B. LONGITUDINAL BARS (SCHOOL)	2 @ 6 (150) 12 (300) @ 45° 12 (300) @ 90°	SOLID SOLID SOLID	WHITE WHITE WHITE	NOT LESS THAN 6' (1.8 m) APART 2' (600) APART 2' (600) APART SEE TYPICAL CROSSWALK MARKING DETAILS.
STOP LINES	24 (600)	SOLID	WHITE	PLACE 4' (1.2 m) IN ADVANCE OF AND PARALLEL TO CROSSWALK, IF PRESENT. OTHERWISE, PLACE AT DESIRED STOPPING POINT, PARALLEL TO CROSSROAD CENTERLINE, WHERE POSSIBLE
PAINTED MEDIANS	2 @ 4 (100) WITH 12 (300) DIAGONALS @ 45° NO DIAGONALS USED FOR 4' (1.2 m) WIDE MEDIANS	SOLID	YELLOW; TWO WAY TRAFFIC WHITE; ONE WAY TRAFFIC	11 (280) C-C FOR THE DOUBLE LINE SEE TYPICAL PAINTED MEDIAN MARKING.
GORE MARKING AND CHANNELIZING LINES	8 (200) WITH 12 (300) DIAGONALS @ 45°	SOLID	WHITE	DIAGONALS: 15' (4.5 m) C-C (LESS THAN 30MPH (50 km/h)) 20' (6 m) C-C 30MPH (50 km/h) TO 45MPH (70 km/h) 30' (9 m) C-C (OVER 45MPH (70 km/h))
RAILROAD CROSSING	24 (600) TRANSVERSE LINES; "RR" IS 6' (1.8 m) LETTERS; 16 (400) LINE FOR "X"	SOLID	WHITE	SEE STATE STANDARD 78000! AREA OF: "R"=3.6 SQ. FT. (0.33 m ²) EACH "X"=54.0 SQ. FT. (5.0 m ²)
SHOULDER DIAGONALS	12 (300) @ 45°	SOLID	WHITE - RIGHT YELLOW - LEFT	50' (15 m) C-C (LESS THAN 30MPH (50 km/h)) 75' (25 m) C-C 30 MPH (50 km/h) TO 45MPH (70 km/h) 150' (45 m) C-C (OVER 45MPH (70 km/h))

FOR FURTHER DETAILS ON PAVEMENT MARKING REFER TO STANDARD SPECIFICATIONS FOR ROAD AND BRIDGE CONSTRUCTION AND STATE STANDARD 78000.

	LARGE SIZE	SMALL SIZE
THROUGH ARROW	1.07 (11.5)	0.60 (6.5)
LEFT OF RIGHT ARROW	1.47 (15.8)	0.60 (6.5)
COMBINATION LEFT (RIGHT) AND THROUGH ARROW	2.42 (26.0)	1.37 (14.7)
RAILROAD "R" 1.8m (6ft.)	0.33 (3.6)	-
RAILROAD "X" 6.1m (20ft.)	5.02(54.0)	-
HANDICAPPED SYMBOL	0.43 (4.6)	-

REVISIONS	
NAME	DATE
EVERS	03-19-90
T. RAMMACHER	10-27-94
ALEX HOUSEH	10-09-96
ALEX HOUSEH	10-17-96
T. RAMMACHER	01-06-00

All dimensions are in inches (millimeters) unless otherwise shown.

ILLINOIS DEPARTMENT OF TRANSPORTATION
DISTRICT ONE
TYPICAL PAVEMENT MARKINGS

SCALE: NONE

DRAWN BY CAD

CHECKED BY

TC-13

PLOT DATE = 3/6/2007
FILE NAME = K:\Users\jval3\My Documents\TC-13.dwg
PLOT SCALE = 1/8" = 1'-0"
USER NAME = jval3



Frank Novotny & Associates, Inc.

Civil Engineers/Municipal Consultants
825 Midway Drive • Willowbrook, IL • 60527 • Telephone: (630) 887-8640 • Fax: (630) 887-0132
Illinois Professional Design Firm No. 184-000928

PROJECT

VILLAGE OF HODGKINS, ILLINOIS
LAPP STREET RESURFACING

MFT SECTION NO. 09-00016-00-RS

REVISIONS

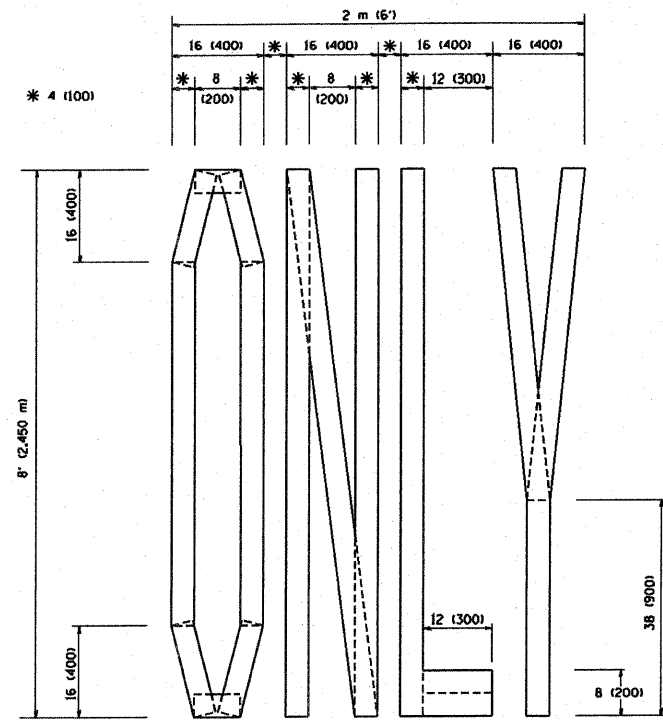
NO.	BY	DATE	DESCRIPTION

PAVEMENT MARKING STANDARDS

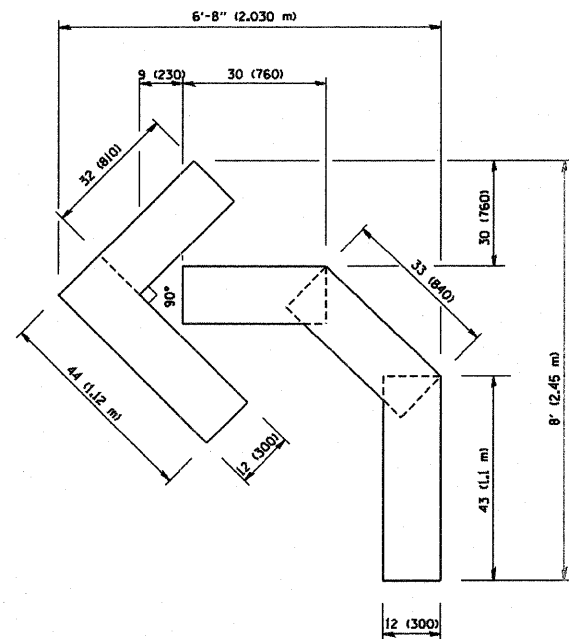
PROJECT NO.	SCALE	SHEET
09055	NONE	12
DRAWN/DESIGNED	DATE	OF
JFP/JLC	APR., 2009	18
CHECKED/APPROVED	FIELD BOOK NO.	SHEETS
JLC	FILE	

FAU RTE	SECTION	COUNTY	TOTAL SHEETS	SHEET NO.
VARIOUS	09-00016-00-RS	COOK	18	13
F.H.W.A. REG.	ILLINOIS	PROJECT	HPP-3461(002)	

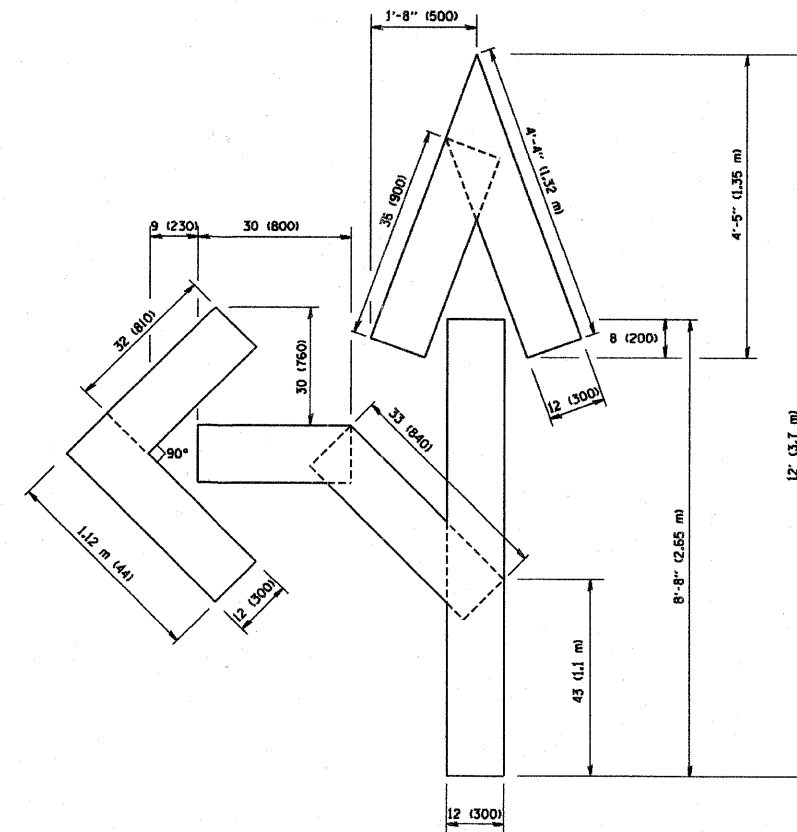
CONTRACT NO. 63204



QUANTITY
4 (100) LINE = 64.1 ft. (19.7 m)
21.1 sq. ft. (1.97 sq. m)



QUANTITY
4 (100) LINE = 45.5 ft. (13.9 m)
15.2 sq. ft. (1.39 sq. m)



QUANTITY
4 (100) LINE = 82.5 ft. (25.3 m)
27.5 sq. ft. (2.53 sq. m)

All dimensions are in inches (millimeters) unless otherwise shown.

REVISIONS	
NO.	DATE
T. RAMMACHER	09/18/94
J. OBERLE	06/01/96
T. RAMMACHER	06/05/98
T. RAMMACHER	11/04/97
T. RAMMACHER	03/02/98
E. GOMEZ	08/28/00

ILLINOIS DEPARTMENT OF TRANSPORTATION

**PAVEMENT MARKING
LETTERS AND SYMBOLS
FOR TRAFFIC STAGING**

SCALE: NONE

DRAWN BY CADD

CHECKED BY

TC-16

PLOT DATE: 2/7/2009
PLOT SCALE: 1/8" = 1'-0"
USER NAME: bbarndt



Frank Novotny & Associates, Inc.

Civil Engineers/
Municipal Consultants
825 Midway Drive • Willowbrook, IL • 60527 • Telephone: (630) 887-8640 • Fax: (630) 887-0132
Illinois Professional Design Firm No. 184-000928

PROJECT

**VILLAGE OF HODGKINS, ILLINOIS
LAPP STREET RESURFACING**

MFT SECTION NO. 09-00016-00-RS

REVISIONS

NO.	BY	DATE	DESCRIPTION

**PAVEMENT MARKING
LETTERS AND SYMBOLS
FOR TRAFFIC STAGING**

PROJECT NO.

SCALE

09055

NONE

DRAWN/DESIGNED

DATE

JFP/JLC

APR., 2009

CHECKED/APPROVED

FIELD BOOK NO.

JLC

FILE

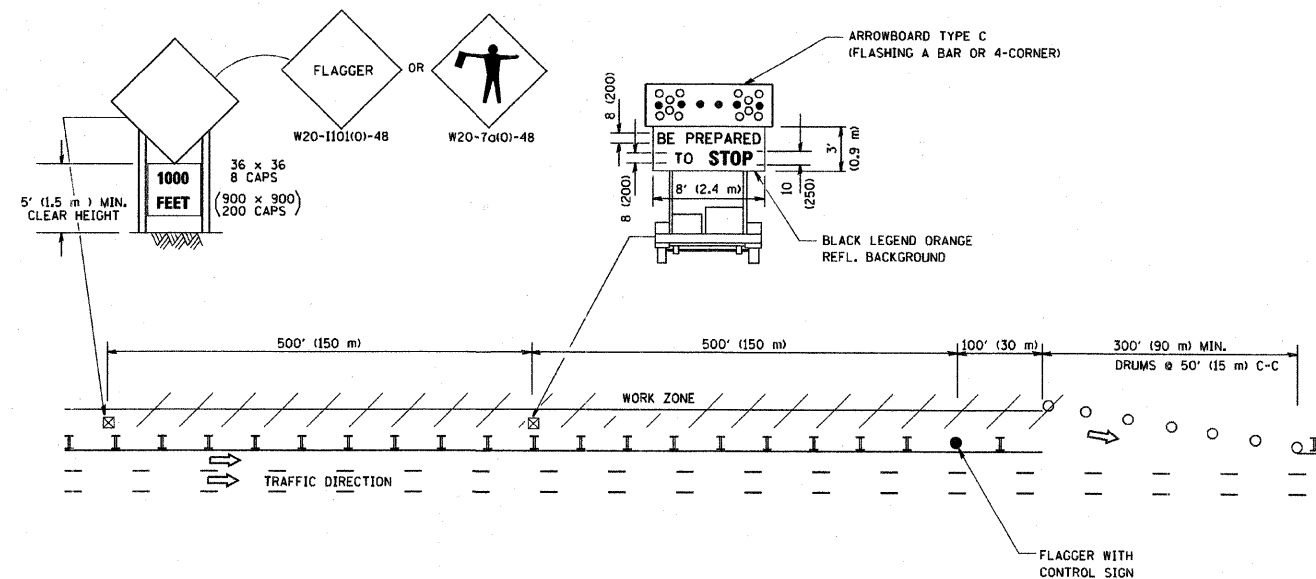
SHEET
13
OF
18
SHEETS

FAU RTE	SECTION	COUNTY	TOTAL SHEETS	SHEET NO.
VARIOUS	09-00016-00-RS	COOK	18	15
F.H.W.A. REG.	ILLINOIS	PROJECT	HPP-3461(002)	

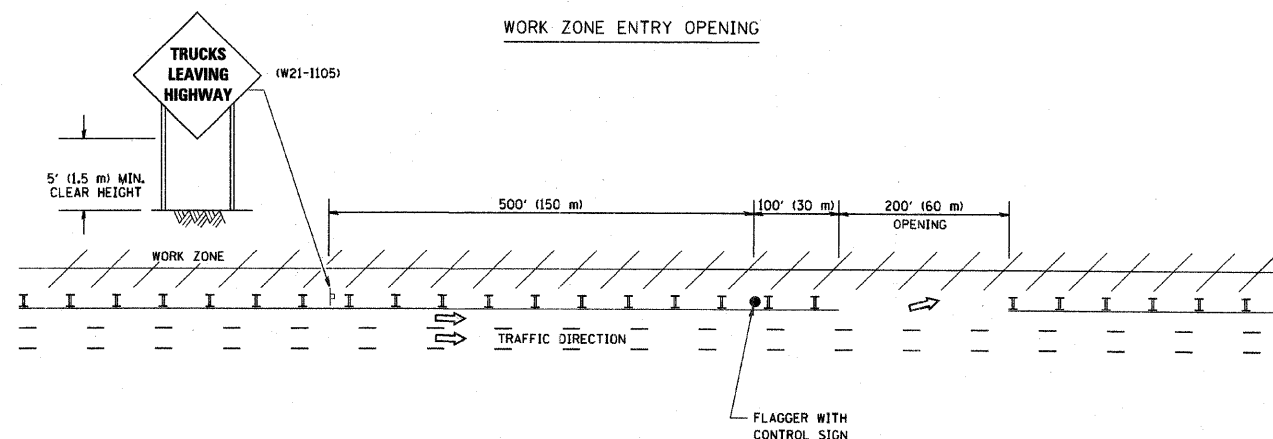
CONTRACT NO. 63204

SIGNING FOR FLAGGING OPERATIONS AT WORK ZONE OPENINGS

WORK ZONE EXIT OPENING



WORK ZONE ENTRY OPENING



NOTES:

1. The Arrowboard, the Flagger Ahead trailer mounted sign, and the Trucks Leaving Highway sign shall be removed or turned away from traffic and the exit and entry openings shall be closed when the flagging operation ceases.
2. Work Zone Exit Openings should be a minimum of one half mile apart.
3. Exiting the work zone at any place other than at a Work Zone Exit Opening will be prohibited.
4. All vehicles shall enter the work zone at entry openings, using their turn signals to warn motorists

ALL DIMENSIONS ARE IN INCHES (MILLIMETERS) UNLESS OTHERWISE SHOWN

REVISIONS	
NO.	DATE
DWS	8/98
JAF	4/03
JAF	2/06
SPB	1/07

ILLINOIS DEPARTMENT OF TRANSPORTATION
SIGNING FOR FLAGGING OPERATIONS AT WORK ZONE OPENINGS

SCALE: NONE

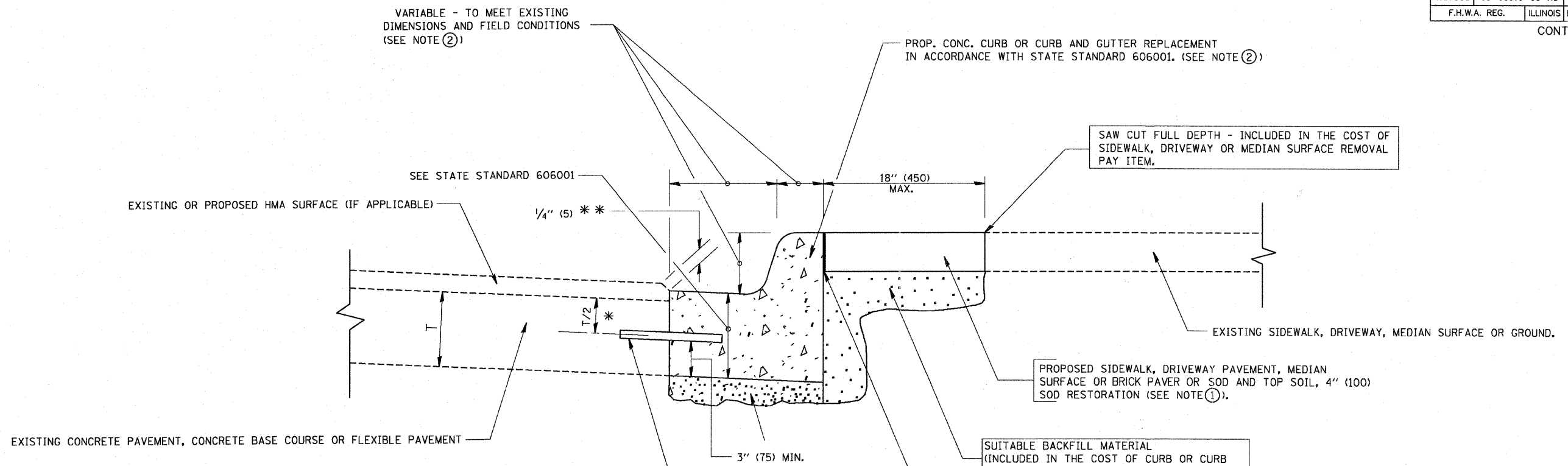
DRAWN BY CADD
CHECKED BY TC-18

PLT DATE = 3/7/2007
PLT SCALE = 08.000 / IN.
USER NAME = bward

REVISIONS			
NO.	BY	DATE	DESCRIPTION

FAU RTE	SECTION	COUNTY	TOTAL SHEETS	SHEET NO.
VARIOUS	09-00016-00-RS	COOK	18	16
F.H.W.A. REG.	ILLINOIS	PROJECT	HPP-3461(002)	

CONTRACT NO. 63204



- * 3" (75) MINIMUM FROM TOP AND BOTTOM OF THE CONCRETE PAVEMENT OR BASE COURSE.
- * * IF THE FINAL SURFACE OF THE PAVEMENT IS CONCRETE, THE GUTTER IS TO BE FLUSH WITH THE PAVEMENT.

NOTE: ① SIDEWALK, DRIVEWAY PAVEMENT OR MEDIAN SURFACE SHALL BE SIMILAR TO THE MATERIAL BEING REMOVED AND WILL BE PAID FOR SEPARATELY.

SALT TOLERANT SOD AND TOP SOIL, 4" (100) RESTORATION WILL NOT BE PAID FOR SEPARATELY, BUT SHALL BE INCLUDED IN THE COST OF CURB OR CURB AND GUTTER REMOVAL AND REPLACEMENT.

- ② CURB OR CURB AND GUTTER REPLACEMENT SHALL MATCH THE SHAPE OF THE EXISTING CURB OR CURB AND GUTTER UNLESS OTHERWISE SPECIFIED.
- ③ FOR CURB OR CURB AND GUTTER REMOVAL AND REPLACEMENT ADJACENT TO FLEXIBLE PAVEMENT DELETE EPOXY COATED TIE BARS.
- ④ LONGITUDINAL BARS, IF ENCOUNTERED IN THE EXISTING CURB OR CURB AND GUTTER, ARE NOT TO BE REPLACED. CUTTING AND REMOVING LONGITUDINAL BARS SHALL BE INCLUDED IN THE COST OF CURB OR CURB AND GUTTER REMOVAL AND REPLACEMENT.
- ⑤ THE COST OF HMA SURFACE REMOVAL IN THE EXISTING GUTTER FLAG SHALL BE INCLUDED IN THE COST OF THE CURB AND GUTTER REMOVAL AND REPLACEMENT.
- ⑥ THE REMOVAL AND REPLACEMENT OF THE EXISTING CURB OR CURB AND GUTTER SHALL BE DONE IN ACCORDANCE WITH THE APPLICABLE PORTIONS OF SECTION 440 AND 606 OF THE STANDARD SPECIFICATIONS.
- ⑦ THE LOCATIONS OF REMOVAL AND REPLACEMENT OF EXISTING CURB OR CURB AND GUTTER SHALL BE DETERMINED BY THE RESIDENT ENGINEER AT THE TIME OF CONSTRUCTION.

PROPOSED 3/4" (20) PREFORMED EXPANSION JOINT AT CONCRETE SIDEWALKS, DRIVEWAYS, AND MEDIANS. (INCLUDED IN THE COST OF CURB OR CURB AND GUTTER REMOVAL AND REPLACEMENT.)

UNSUITABLE SUB-BASE MATERIAL TO BE REMOVED, IF DIRECTED BY THE ENGINEER, SHALL BE REPLACED WITH EITHER SUB-BASE GRANULAR MATERIAL, TYPE B OR ADDITIONAL THICKNESS OF CONCRETE.

REMOVAL AND REPLACEMENT 4" (100) OR LESS IS INCLUDED IN THE COST OF CURB OR CURB AND GUTTER REMOVAL AND REPLACEMENT.

REMOVAL AND REPLACEMENT IN EXCESS OF 4" (100) WILL BE PAID FOR IN ACCORDANCE WITH ARTICLE 109.04 OF THE STANDARD SPECIFICATIONS.

PROPOSED #6 (20) EPOXY COATED TIE BARS 24" (600) LONG AT 24" (600) CENTERS WILL NOT BE PAID FOR SEPARATELY. DELETE EPOXY COATED TIE BARS IF EXISTING TIE BARS ARE USABLE AS DETERMINED BY THE ENGINEER. (SEE NOTE ③).

BASIS OF PAYMENT:
THIS WORK WILL BE PAID FOR AT THE CONTRACT UNIT PRICE PER FOOT FOR "CURB & GUTTER REMOVAL" AND "COMBINATION CONCRETE CURB & GUTTER REMOVAL AND REPLACEMENT" OF THE TYPE INDICATED.

ALL DIMENSIONS ARE IN INCHES (MILLIMETERS) UNLESS OTHERWISE SHOWN.

CURB OR CURB AND GUTTER REMOVAL AND REPLACEMENT

REVISIONS	
NO.	DATE
A. HOJSEH	03/11/94
R. SHAH	02/24/95
R. SHAH	03/02/95
R. SHAH	08/19/96
R. SHAH	09/12/96
R. SHAH	09/19/96
R. SHAH	10/03/96
A. ABBAS	03/21/97
M. GOMEZ	01/22/01
R. BORO	01/01/07

ILLINOIS DEPARTMENT OF TRANSPORTATION

CURB OR
CURB AND GUTTER
REMOVAL AND REPLACEMENT

SCALE: VERT. NONE
HORIZ. NONE

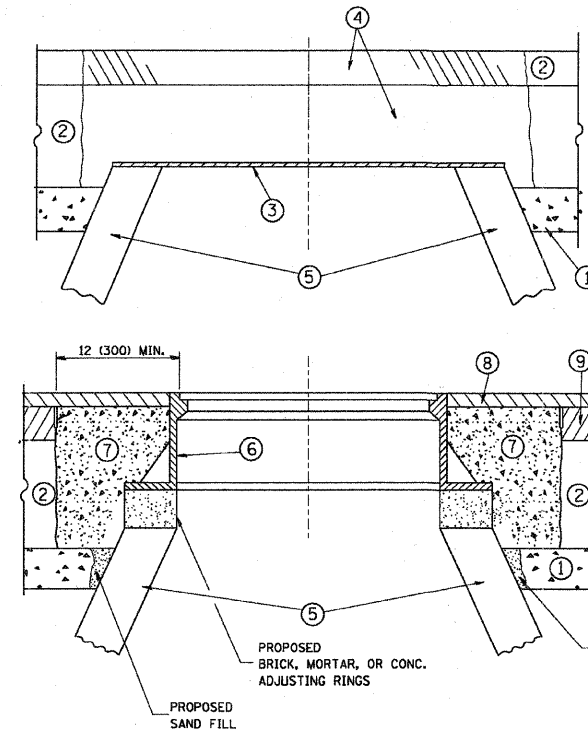
DRAWN BY
CHECKED BY
BD600-06 (BD-24)

PLOT DATE: 2/25/2007
 PLOT SCALE: 1/8" = 1'-0"
 USER NAME: bmaral

REVISIONS			
NO.	BY	DATE	DESCRIPTION

FAU RTE	SECTION	COUNTY	TOTAL SHEETS	SHEET NO.
VARIOUS	09-00016-00-RS	COOK	18	17
F.H.W.A. REG.	ILLINOIS PROJECT	HPP-3461(002)		

CONTRACT NO. 63204



CONSTRUCTION PROCEDURES

STAGE 1 (BEFORE PAVEMENT MILLING)

- A) REMOVE A MINIMUM OF 12 (300) OF THE PAVEMENT FROM AROUND THE STRUCTURE.
- B) REMOVE THE EXISTING FRAME AND LID FROM THE STRUCTURE.
- C) COVER THE STRUCTURE OPENING WITH A 36 (900) DIAMETER METAL PLATE.
- D) BACKFILL WITH CRUSHED STONE AND A MINIMUM 1/2 (40) THICK HMA SURFACE MIX APPROVED BY THE ENGINEER.

STAGE 2 (AFTER PAVEMENT MILLING)

- A) REMOVE THE HMA SURFACE MIX AND CRUSHED STONE.
- B) INSTALL THE FRAME AND LID; ADJUST THE FRAME TO ITS FINAL SURFACE ELEVATION.
- C) THE SURROUNDING SPACE SHALL BE FILLED WITH CLASS SI CONCRETE, OR HMA SURFACE COURSE OR HMA BINDER COURSE TO THE ELEVATION OF THE SURFACE OF THE EXISTING BASE COURSE OR THE BINDER COURSE.

THE PROCEDURE EXPLAINED ABOVE SHALL CONFORM TO THE APPLICABLE PORTIONS OF SECTIONS 353, 406, 602, AND 603 OF THE STANDARD SPECIFICATIONS.

LEGEND

- ① SUB-BASE GRANULAR MATERIAL
- ② EXISTING PAVEMENT
- ③ 36 (900) DIAMETER METAL PLATE
- ④ PROPOSED CRUSHED STONE AND HMA SURFACE MIX
- ⑤ EXISTING STRUCTURE
- ⑥ FRAME AND LID (SEE NOTES)
- ⑦ CLASS SI CONCRETE, HMA SURFACE COURSE OR HMA BINDER COURSE
- ⑧ PROPOSED HMA SURFACE COURSE
- ⑨ PROPOSED HMA BINDER COURSE

LOCATION OF STRUCTURES:

THE CONTRACTOR WILL BE REQUIRED TO KEEP A RECORD OF THE LOCATIONS OF THE BURIED STRUCTURES ACCORDING TO THE STATION AND DISTANCE LEFT OR RIGHT OF THE CENTERLINE OF PAVEMENT. UPON COMPLETION OF THE WORK, THE CONTRACTOR WILL DELIVER THE RECORD TO THE ENGINEER.

BASIS OF PAYMENT: THIS WORK WILL BE PAID FOR AT THE CONTRACT UNIT PRICE PER EACH FOR "FRAMES & LIDS TO BE ADJUSTED, SPECIAL" NEW FRAMES AND LIDS, WHEN SPECIFIED, WILL BE PAID FOR SEPARATELY.

NOTES:

EXISTING BROKEN FRAMES AND LIDS SHALL BE REMOVED AND DISPOSED OF BY THE CONTRACTOR AND SHALL BE REPLACED AS DIRECTED BY THE ENGINEER. REPLACEMENT FRAMES AND LIDS WILL BE PAID FOR IN ACCORDANCE WITH ARTICLE 109.04 OF THE STANDARD SPECIFICATIONS UNLESS A SEPARATE PAY ITEM HAS BEEN PROVIDED.

IF THE EXISTING LIDS ARE OPEN, THE FRAME WILL BE ADJUSTED TO THE ELEVATION OF THE MILLED PAVEMENT SURFACE PRIOR TO THE MILLING OPERATION. THE FRAME WILL NOT BE REMOVED AND COVERED BY THE METAL PLATE.

CITY OF CHICAGO CASTINGS ARE THE PROPERTY OF THE CITY AND THE CONTRACTOR SHALL NOTIFY THE CITY FOR REMOVAL AND DISPOSITION OF THE CASTINGS.

THE METAL PLATE USED TO COVER THE STRUCTURE SHALL REMAIN THE PROPERTY OF THE CONTRACTOR.

WHEN STRUCTURES ARE TO BE ADJUSTED OR RECONSTRUCTED, THE LOWERING AND RAISING OF THE FRAMES AND LIDS WILL NOT BE PAID FOR SEPARATELY BUT WILL BE INCLUDED IN THE COST OF THE CORRESPONDING PAY ITEM.

DETAILS FOR FRAMES AND LIDS ADJUSTMENT WITH MILLING

ALL DIMENSIONS ARE IN INCHES (MILLIMETERS) UNLESS OTHERWISE SHOWN

REVISIONS	NAME	DATE
	R. SHAH	10/25/94
	R. SHAH	01/30/95
	R. SHAH	03/10/95
	A. ABBAS	03/21/97
	R. WIEDEMAN	05/14/04
	R. BORO	01/01/07

ILLINOIS DEPARTMENT OF TRANSPORTATION
**DETAILS FOR
FRAMES AND LIDS ADJUSTMENT
WITH MILLING**

SCALE: VERT. NONE
HORIZ.

DRAWN BY
CHECKED BY
BD600-03 (BD-8)

PLT DATE = 3/6/2007
PLT SCALE = 8/8/000 / 1 IN.
USER NAME = bward

PROJECT
VILLAGE OF HODGKINS, ILLINOIS
LAPP STREET RESURFACING
MFT SECTION NO. 09-00016-00-RS

REVISIONS			
NO.	BY	DATE	DESCRIPTION

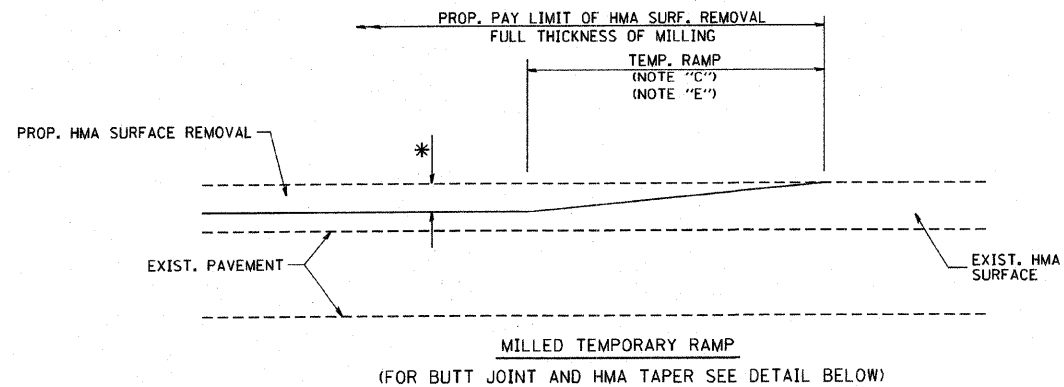
**DETAILS FOR
FRAMES AND LIDS
ADJUSTMENTS WITH MILLING**

PROJECT NO. 09055	SCALE NONE
DRAWN/DESIGNED JFP/JLC	DATE APR., 2009
CHECKED/APPROVED JLC	FIELD BOOK NO. FILE

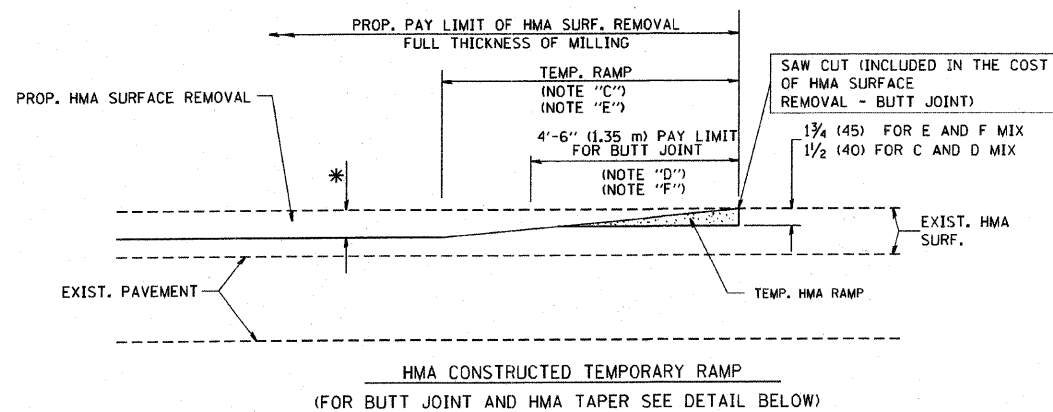
SHEET
17
OF
18
SHEETS

FAU RTE	SECTION	COUNTY	TOTAL SHEETS	SHEET NO.
VARIOUS	09-00016-00-RS	COOK	18	18
F.H.W.A. REG.	ILLINOIS PROJECT	HPP-3461(002)		

CONTRACT NO. 63204

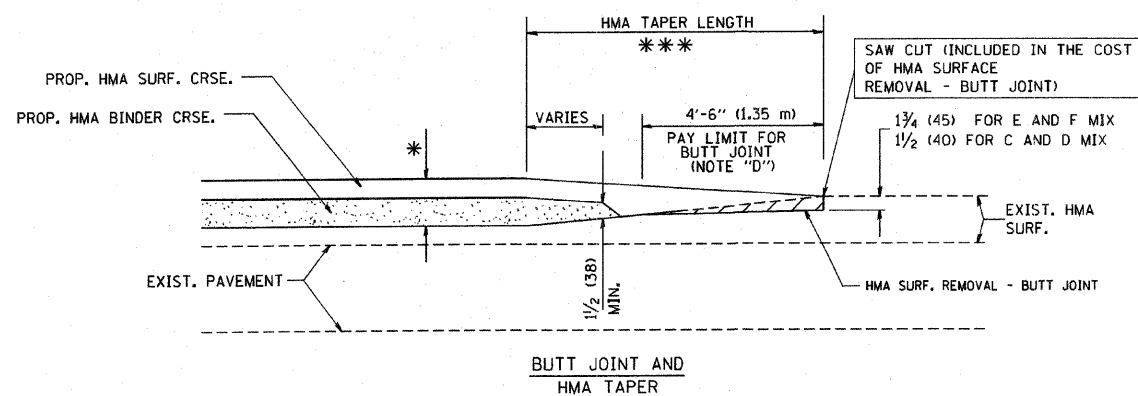


OPTION 1

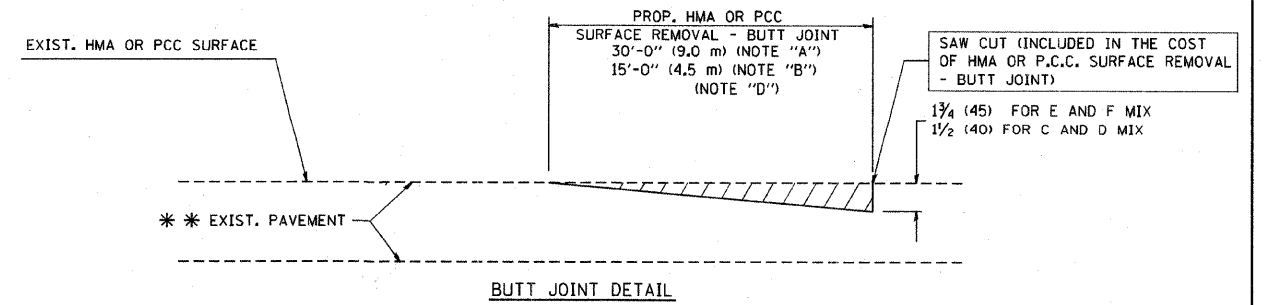


OPTION 2

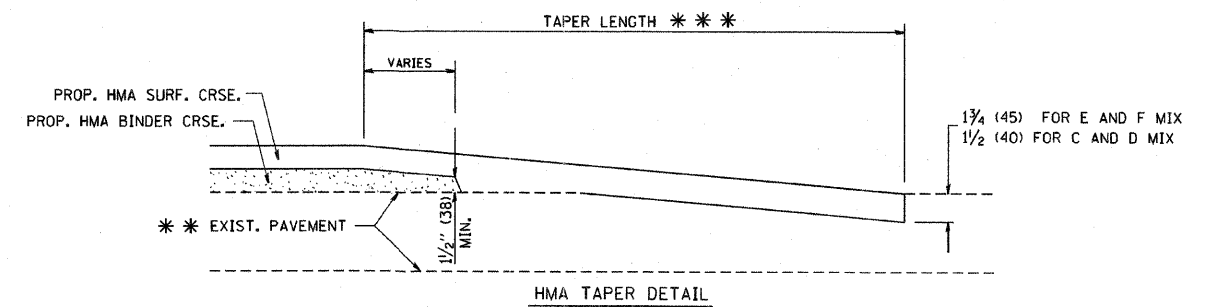
TYPICAL TEMPORARY RAMP



TYPICAL BUTT JOINT AND HMA TAPER FOR MILLING AND RESURFACING



BUTT JOINT DETAIL



HMA TAPER DETAIL

TYPICAL BUTT JOINT AND HMA TAPER FOR RESURFACING ONLY

*** PC CONCRETE, HMA OR HMA RESURFACED PAVEMENT.

NOTES

- A: MAINLINE ROADWAYS AND MAJOR SIDE ROADS.
 - B: MINOR SIDE ROADS.
 - C: THE TEMP. RAMP SHALL BE CONSTRUCTED IMMEDIATELY UPON REMOVAL OF THE EXISTING HMA SURFACE.
 - D: THE BUTT JOINT SHALL BE CONSTRUCTED IMMEDIATELY PRIOR TO PLACING THE PROPOSED HMA COURSES.
 - E: TAPER THE TEMP. RAMP AT A RATE OF 3'-0" (900 mm) PER 1 INCH (25 mm) OF MILLING THICKNESS.
 - F: INSTALLATION AND REMOVAL OF THE 4'-6" (1.35 m) TEMP. RAMP IS INCLUDED IN COST OF HMA SURFACE REMOVAL - BUTT JOINT
 - G: SEE ARTICLE 406.08 AND 406.14 OF THE STANDARD SPECIFICATIONS FOR "HMA AND/OR PCC SURFACE REMOVAL, BUTT JOINT".
- * SEE TYPICAL SECTIONS FOR MILLING THICKNESS.
- *** 20'-0" (6.1 m) PER 1 (25) RESURFACING (NOTE "A")
10'-0" (3.0 m) PER 1 (25) RESURFACING (NOTE "B")

ALL DIMENSIONS ARE IN INCHES (MILLIMETERS) UNLESS OTHERWISE SHOWN.

BASIS OF PAYMENT:

THE BUTT JOINT WILL BE PAID FOR AT THE CONTRACT UNIT PRICE PER SQUARE YARD (SQUARE METER) FOR "HOT-MIX ASPHALT SURFACE REMOVAL - BUTT JOINT" OR FOR "PORTLAND CEMENT CONCRETE SURFACE REMOVAL - BUTT JOINT".

REVISIONS	
NAME	DATE
M. DE YONG	6-13-90
M. DE YONG	7-3-90
M. DE YONG	3-27-92
R. SHAH	09/09/94
R. SHAH	10/25/94
A. ABBAS	03/21/97
M. GOMEZ	04/06/01
R. BORO	01/01/07

ILLINOIS DEPARTMENT OF TRANSPORTATION

BUTT JOINT AND HMA TAPER DETAILS

SCALE: VERT. NONE
HORIZ. NONE

DRAWN BY
CHECKED BY

BD400-05 (VI-BD32)

PLOT DATE = 3/15/2009
PLOT SCALE = 1/8"=1'-0"
USER NAME = bboard



Frank Novotny & Associates, Inc.

825 Midway Drive • Willowbrook, IL • 60527 • Telephone: (630) 887-8640 • Fax: (630) 887-0132
Illinois Professional Design Firm No. 184-000928

PROJECT

VILLAGE OF HODGKINS, ILLINOIS
LAPP STREET RESURFACING

MFT SECTION NO. 09-00016-00-RS

REVISIONS

NO.	BY	DATE	DESCRIPTION

BUTT JOINT AND HMA TAPER DETAILS

PROJECT NO. 09055	SCALE NONE	SHEET 18
DRAWN/DESIGNED JFP/JLC	DATE APR., 2009	OF 18
CHECKED/APPROVED JLC	FIELD BOOK NO. FILE	SHEETS