

F.A.U. RTE.	SECTION	COUNTY	TOTAL SHEETS	SHEET NO.
1321	09-00053-00-RS	COOK	13	1
FED. ROAD DIST. NO.		ILLINOIS	CONTRACT NO. 63213	

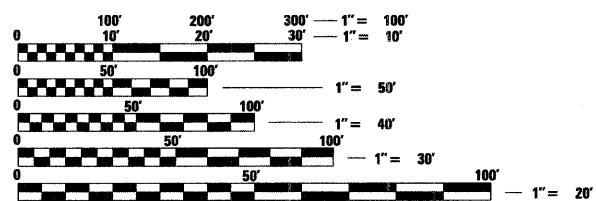
INDEX OF SHEETS

1	COVER SHEET
2	GENERAL NOTES AND HIGHWAY STANDARDS
3	SUMMARY OF QUANTITIES
4	TYPICAL SECTIONS
5	ROADWAY PLAN
6-13	DETAILS

STATE OF ILLINOIS
DEPARTMENT OF TRANSPORTATION
DIVISION OF HIGHWAYS
PLANS FOR PROPOSED
FEDERAL AID HIGHWAY
FAU 1321 (IRVING PARK ROAD\IL ROUTE 19)
MADISON DRIVE TO BARTLETT ROAD
RESURFACING
SECTION 09-00053-00-RS
PROJECT ARA-9003(304)
VILLAGE OF STREAMWOOD
COOK COUNTY
C-91-582-09


TRAFFIC DATA
ADT:
IL ROUTE 19 22,200 VPD (2009)
 MINOR ARTERIAL (URBAN)

POSTED SPEED
40 MPH (EXISTING)
40 MPH (PROPOSED)



FULL SIZE PLANS HAVE BEEN PREPARED USING STANDARD ENGINEERING SCALES. REDUCED SIZED PLANS WILL NOT CONFORM TO STANDARD SCALES. IN MAKING MEASUREMENTS ON REDUCED PLANS, THE ABOVE SCALES MAY BE USED.

J.U.L.I.E.
JOINT UTILITY LOCATION INFORMATION FOR EXCAVATION CALL 811



Know what's below.
Call before you dig.

Illinois Professional Design Firm # 184-000108

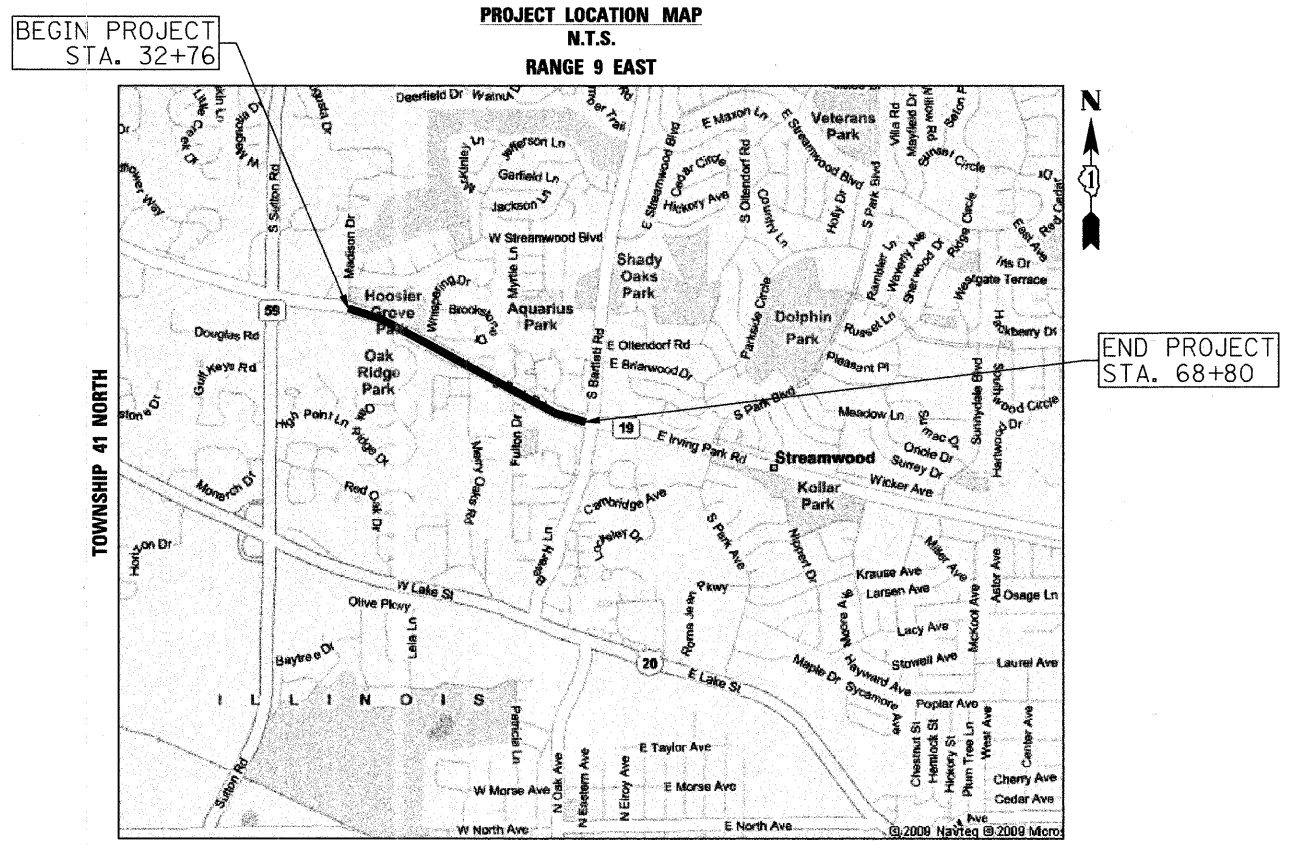


SEC Group, Inc.
Engineering
Surveying
Planning
Landscape Architecture

McHenry • Yorkville • New Lenox • Chicago
www.secgroupinc.com

PROJECT MANAGER: A. CHAUDHRY
PROJECT ENGINEER: C. HARTKE

CONTRACT NO. 63213



PROJECT LENGTH
GROSS LENGTH OF PROJECT = 3,604 FT (0.683 MI)

NET LENGTH OF IMPROVEMENT = 3,604 FT (0.683 MI)



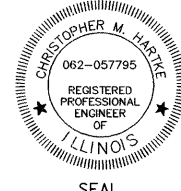
STATE OF ILLINOIS
DEPARTMENT OF TRANSPORTATION
DIVISION OF HIGHWAYS

APPROVED 5/22 2009
Matt M.
VILLAGE OF STREAMWOOD

PASSED JUNE 1 2009
Christopher M. Hartke
DISTRICT ONE ENGINEER OF LOCAL ROADS AND STREETS

RELEASING FOR BID
BASED ON LIMITED REVIEW JUNE 1 2009
Diana M. O'Keefe
DEPUTY DIRECTOR OF HIGHWAYS, REGION ONE ENGINEER

PROFESSIONAL ENGINEER'S SIGN & SEAL



Christopher M. Hartke 5/22/2009
CHRISTOPHER M. HARTKE, P.E.
EXPIRES: 11-30-09

SEAL

**PRINTED BY THE AUTHORITY
OF THE STATE OF ILLINOIS**

COMPANY NAME: Smith
PROJECT CONTACT: A. CHAUDHRY
CLIENT: VILLAGE OF STREAMWOOD
DATE PLOTTED: 5/18/2009 4:25:01 PM
FILE NAME: 090118-cvr.dgn
PLOT DRIVER: McHenry-1050-plotter-AS.JS.plt
PEN TABLE: Standard.ctb

ASSOCIATE FIELD ENGINEER: KEVIN STALLWORTH (847)-705-4169