

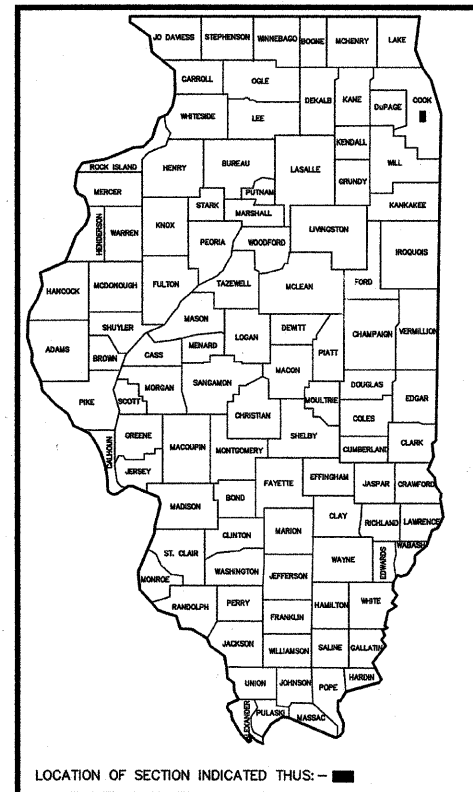
FAU RTE	SECTION	COUNTY	TOTAL SHEETS	SHEET NO.
VARIOUS	06-00080-00-BT	COOK	16	1
F.H.W.A. REG.	ILLINOIS	PROJECT	HPP-3463(004)	

CONTRACT NO. 63220

STATE OF ILLINOIS
DEPARTMENT OF TRANSPORTATION
DIVISION OF HIGHWAYS

**PLANS FOR PROPOSED
FEDERAL AID HIGHWAY**

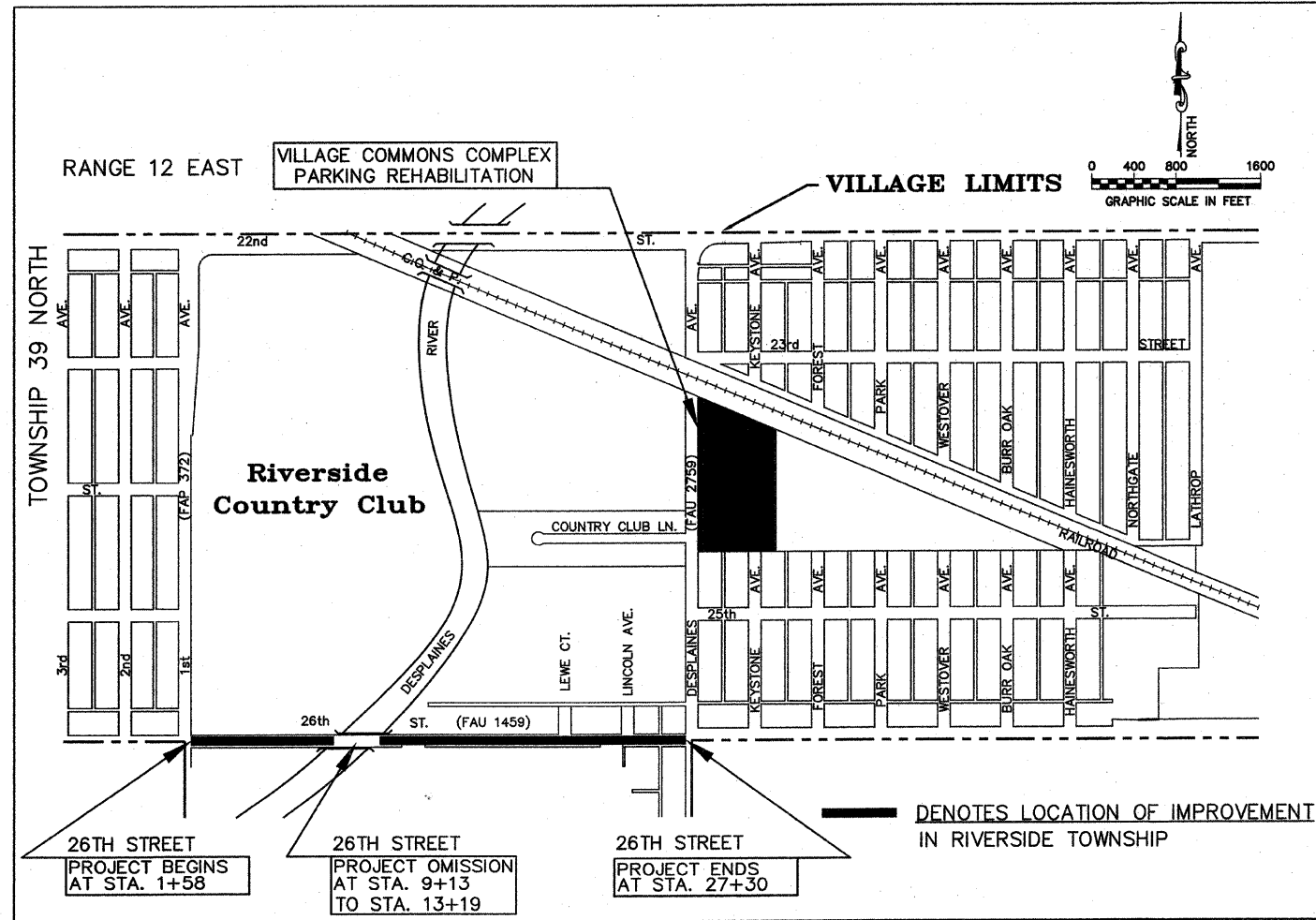
VILLAGE WIDE BIKE PATH - STAGE 1
26TH STREET (FAU RTE. 1459)
FROM 1ST AVE. (FAP 372) TO DES PLAINES AVE. (FAU 2759)
& VILLAGE COMMONS COMPLEX PARKING REHABILITATION
HPP RESURFACING
FEDERAL PROJECT HPP-3463(004)
SECTION NO. 06-00080-00-BT
VILLAGE OF NORTH RIVERSIDE
COOK COUNTY
JOB NO. C-91-390-08



- INDEX OF SHEETS**
- COVER SHEET, INDEX OF SHEETS, LOCATION MAP, INDEX OF STATE STANDARDS
 - GENERAL NOTES, SUMMARY OF QUANTITIES,
 - TYPICAL CROSS SECTIONS, HOT-MIX ASPHALT MIXTURE REQUIREMENTS, JOINT DETAILS, TYPICAL ALLEY RETURN DETAILS
 - PLAN: 26TH STREET (RESURFACING) - 1st AVENUE TO DES PLAINES AVENUE
 - PLAN: 26TH STREET (PAVEMENT MARKING) - 1st AVENUE TO DES PLAINES AVENUE
 - 6-8. PLAN: VILLAGE COMMONS PARKING LOTS (RESURFACING & PAVEMENT MARKING)
 - DISTRICT ONE TYPICAL PAVEMENT MARKINGS
 - TEMPORARY PAVEMENT MARKING LETTERS AND SYMBOLS
 - TRAFFIC CONTROL AND PROTECTION FOR SIDEROADS, INTERSECTIONS, AND DRIVEWAYS
 - SIGNING FOR FLAGGING OPERATION AT WORK ZONE OPENINGS
 - CURB OR CURB AND GUTTER REMOVAL AND REPLACEMENT
 - FRAMES AND LIDS ADJUSTMENTS WITH MILLING
 - BUTT JOINT AND HOT-MIX ASPHALT TAPER DETAILS
 - DISTRICT ONE DETECTOR LOOP INSTALLATION DETAILS FOR ROADWAY RESURFACING

STATE STANDARDS

- 000001-05 STANDARDS SYMBOLS, ABBREVIATIONS, AND PATTERNS
- 420001-07 PAVEMENT JOINTS
- 420111-02 PCC PAVEMENT ROUNDOUTS
- 420701-02 PAVEMENT FABRIC
- 424001-05 CURB RAMPS FOR SIDEWALK
- 442201-03 CLASS C AND D PATCHES
- 602501-01 VALVE VAULT TYPE A
- 604001-03 FRAME & LIDS, TYPE 1
- 606001-04 CONCRETE CURB AND COMBINATION CONCRETE CURB & GUTTER
- 701301-03 LANE CLOSURE, 2 L, 2 W, SHORT TIME OPERATIONS
- 701501-05 URBAN LANE CLOSURE, 2 L, 2 W UNDIVIDED
- 701701-06 URBAN LANE CLOSURE, MULTILANE INTERSECTION
- 701801-04 LANE CLOSURE MULTILANE 1W OR 2W CROSSWALK OR SIDEWALK CLOSURE
- 701901-01 TRAFFIC CONTROL DEVICES
- 720001-01 SIGN PANEL MOUNT DETAILS
- 720006-02 SIGN PANEL ERECT DETAILS
- 780001-02 TYPICAL PAVEMENT MARKINGS
- 781001-03 RAISED REFLECTIVE PAVEMENT MARKERS
- 886001-01 DETECTOR LOOP INSTALLATIONS
- 886006-01 TYPICAL LAYOUTS FOR DETECTION LOOPS



LOCATION MAP

LENGTH OF PROJECT

26TH STREET
GROSS LENGTH OF PROJECT 2,572 FEET (0.5061 miles)
NET LENGTH OF PROJECT 2,166 FEET (0.4102 miles)

STATE OF ILLINOIS
DEPARTMENT OF TRANSPORTATION
DIVISION OF HIGHWAYS

APPROVED May 27 2009

VILLAGE PRESIDENT Kenneth Keeneland

PASSED JUNE 5 2009
CHULT CHIEF ENGINEER OF LOCAL ROADS & STREETS

RELEASING FOR BID BASED ON LIMITED REVIEW JUNE 5, 2009
Diane M. O'Keefe DEPUTY DIRECTOR OF HIGHWAYS, REGION #1 ENGINEER

PROJECT LOCATED IN THE VILLAGE OF NORTH RIVERSIDE PRINTED BY THE AUTHORITY OF THE STATE OF ILLINOIS

FOR UNDERGROUND UTILITY LOCATIONS

REGISTERED PROFESSIONAL ENGINEER OF ILLINOIS

John E. Fitzgerald
SIGNATURE
05/27/09
DATE
JOHN E. FITZGERALD, P.E.
ILL. P.E. NO. 062-048559
EXPIRES 11-30-09

TRAFFIC DATA:
ADT (2008): 13,500
POSTED SPEED LIMIT = 35 MPH
DESIGN SPEED LIMIT = 35 MPH

Frank Novotny & Associates, Inc.
825 Midway Drive • Willowbrook, IL • 60527 • Telephone: (630) 887-8640 • Fax: (630) 887-0132
ILLINOIS PROFESSIONAL DESIGN FIRM NO. 184-000285

FIELD DESIGN ENGINEER: MARILIN SOLOMON (847)705-4407
CONSULTANT: FRANK NOVOTNY AND ASSOCIATES, INC. (630)887-8640

CONTRACT NO. 63220

REVISIONS			
NO.	BY	DATE	DESCRIPTION
1	JEF	5-27-09	PER I.D.O.T. REVIEW

