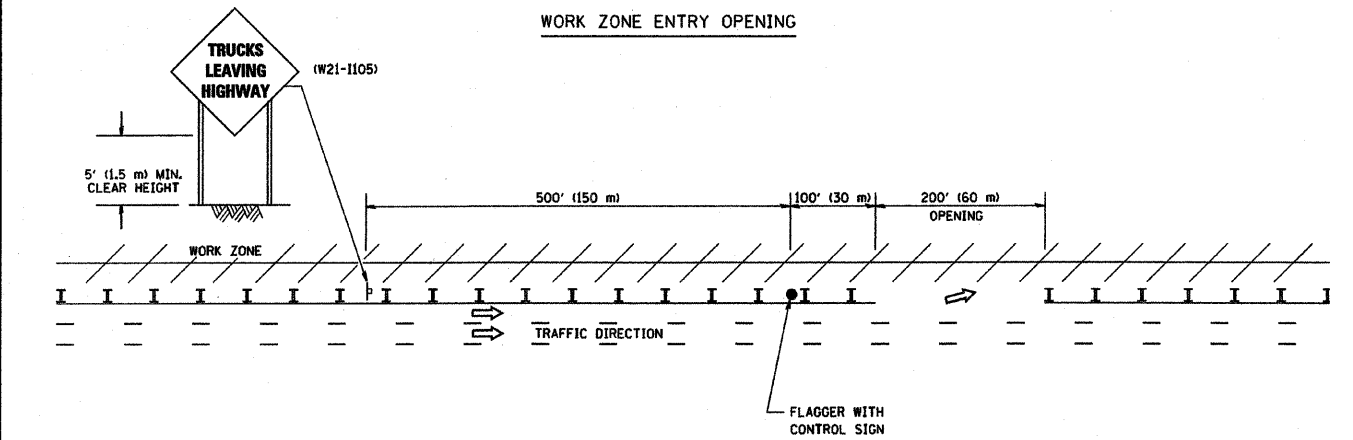
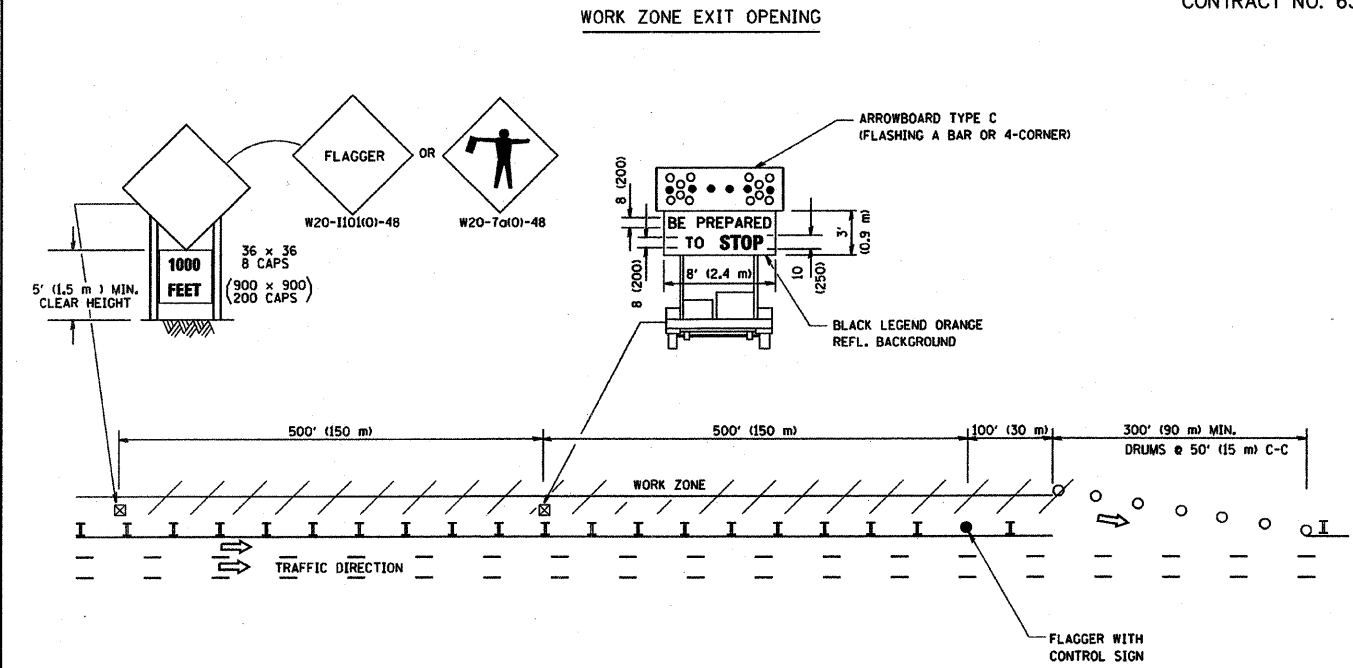


FAU RTE	SECTION	COUNTY	TOTAL SHEETS	SHEET NO.
VARIOUS	06-00080-00-BT	COOK	16	12
F.H.W.A. REG.	ILLINOIS	PROJECT	HPP-3463(004)	

CONTRACT NO. 63220

SIGNING FOR FLAGGING OPERATIONS AT WORK ZONE OPENINGS



NOTES:

1. The Arrowboard, the Flagger Ahead trailer mounted sign, and the Trucks Leaving Highway sign shall be removed or turned away from traffic and the exit and entry openings shall be closed when the flagging operation ceases.
2. Work Zone Exit Openings should be a minimum of one half mile apart.
3. Exiting the work zone at any place other than at a Work Zone Exit Opening will be prohibited.
4. All vehicles shall enter the work zone at entry openings, using their turn signals to warn motorists

ALL DIMENSIONS ARE IN INCHES (MILLIMETERS) UNLESS OTHERWISE SHOWN

REVISIONS	
NO.	DATE
DWS	8/98
JAF	4/03
JAF	2/06
SPB	1/07

ILLINOIS DEPARTMENT OF TRANSPORTATION
SIGNING FOR FLAGGING OPERATIONS AT WORK ZONE OPENINGS
SCALE: NONE
DRAWN BY CADD
CHECKED BY TC-18

PLOT DATE: 3/7/2007
FILE NAME: K:\mst\06\0080\00\001.dwg
USER: MJC

Frank Novotny & Associates, Inc.
Civil Engineers/Municipal Consultants
825 Midway Drive • Willowbrook, IL • 60527 • Telephone: (630) 887-8640 • Fax: (630) 887-0132
Illinois Professional Design Firm No. 184-000928

PROJECT VILLAGE OF NORTH RIVERSIDE, ILLINOIS
VILLAGE WIDE BIKE PATH - STAGE 1
26TH STREET RESURFACING (1ST AVENUE TO DES PLAINES AVENUE)
& VILLAGE COMMONS COMPLEX PARKING REHABILITATION
M.F.T. SECTION NO. 06-00080-00-BT

REVISIONS			
NO.	BY	DATE	DESCRIPTION

SIGNING FOR FLAGGING OPERATIONS AT WORK ZONE OPENINGS

PROJECT NO. 03049	SCALE NONE	SHEET 12 OF 16 SHEETS
DRAWN/DESIGNED JEP/AMS	DATE APRIL, 2009	
CHECKED/APPROVED JFP/JEF	FIELD BOOK NO. FILE	