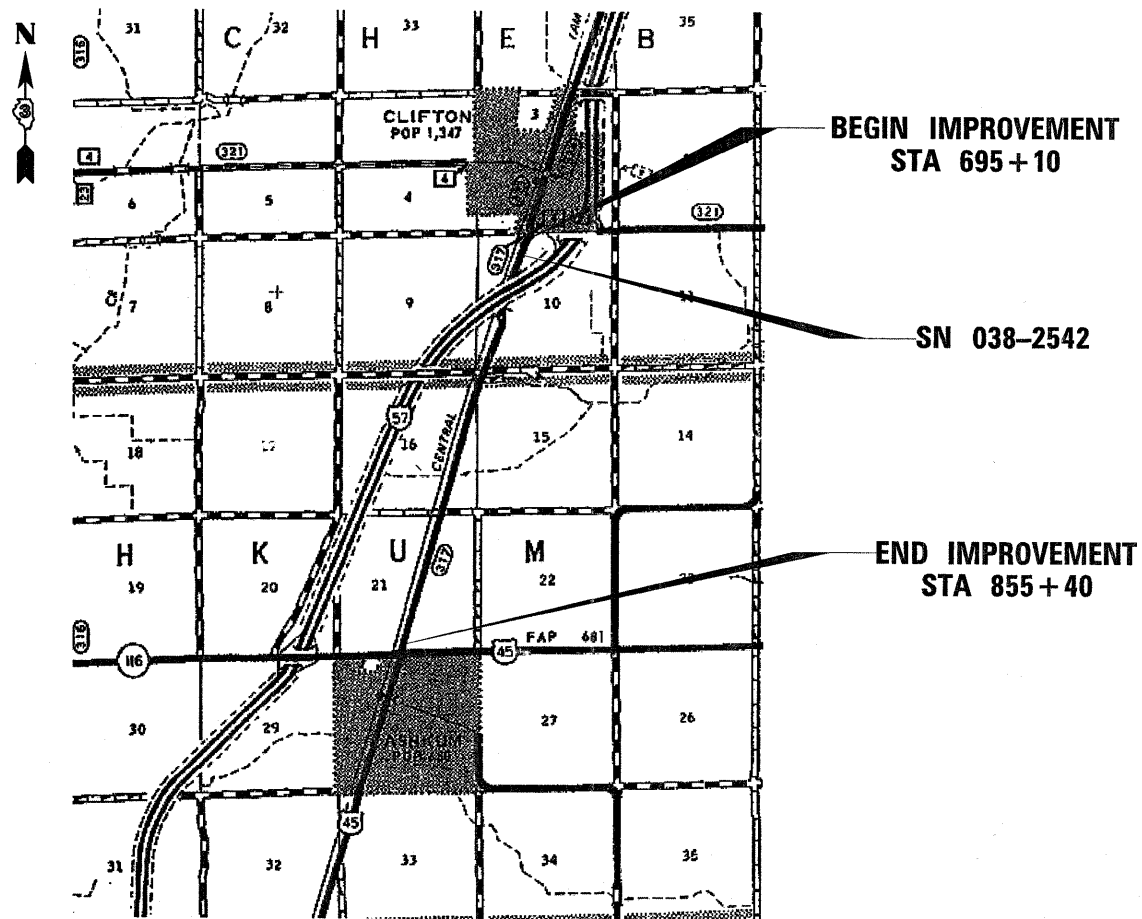


F.A.S. RTE.	SECTION	COUNTY	TOTAL SHEETS	SHEET NO.
317	(37)RS-2, (38)RS-5	IROQUOIS	7	1
ILLINOIS			CONTRACT NO. 66979	

STATE OF ILLINOIS
DEPARTMENT OF TRANSPORTATION
DIVISION OF HIGHWAYS
**PROPOSED
HIGHWAY PLANS**

FAS 317 (OLD US 45)
SECTION (37)RS-2, (38)RS-5
PROJECT ACM-0317(108)
3P RESURFACING
IROQUOIS COUNTY

C-93-149-09
MILLING AND RESURFACING FROM
SOUTH OF 2900 N RD TO NORTH OF IL 116 /US 45



BEGIN IMPROVEMENT
STA 695+10

SN 038-2542

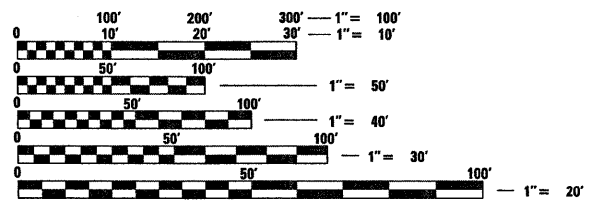
END IMPROVEMENT
STA 855+40

GROSS LENGTH = 16030 FT. = 3.036 MILES
NET LENGTH = 16030 FT. = 3.036 MILES

- INDEX OF SHEETS**
- 1 COVER SHEET
 - 2 GENERAL NOTES
 - 3 SUMMARY OF QUANTITIES
 - 4 TYPICAL SECTIONS
 - 5 SCHEDULES
 - 6 PROJECT LAYOUT
 - 7 DETAILS

STANDARDS

- 000001-05 STANDARD SYMBOLS, ABBREVIATIONS AND PATTERNS
- 001006 DECIMAL OF AN INCH AND OF A FOOT
- 280001-04 TEMPORARY EROSION CONTROL SYSTEMS
- 667101-01 PERMANENT SURVEY MARKERS
- 701008-03 OFF-ROAD OPERATIONS 2L, 2W, 15' (4.5 m) TO 24" (600 mm) FROM PAVEMENT EDGE
- 701011-02 OFF-ROAD MOVING OPERATIONS 2L, 2W, DAY ONLY
- 701301-03 LANE CLOSURE, 2L, 2W, SHORT TIME OPERATIONS
- 701306-02 LANE CLOSURE, 2L, 2W, SLOW MOVING OPERATIONS DAY ONLY, FOR SPEEDS ≥ 45 MPH
- 701311-03 LANE CLOSURE, 2L, 2W, MOVING OPERATIONS - DAY ONLY
- 701901-01 TRAFFIC CONTROL DEVICES
- 780001-02 TYPICAL PAVEMENT MARKINGS
- 781001-03 TYPICAL APPLICATIONS RAISED REFLECTIVE PAVEMENT MARKERS

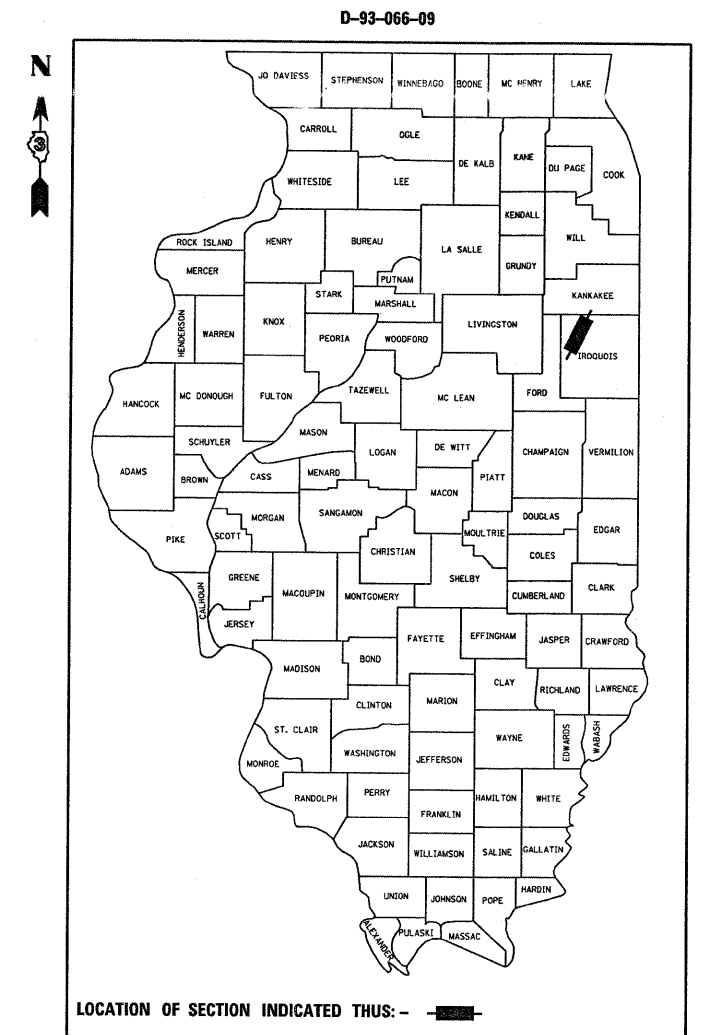


FULL SIZE PLANS HAVE BEEN PREPARED USING STANDARD ENGINEERING SCALES. REDUCED SIZED PLANS WILL NOT CONFORM TO STANDARD SCALES. IN MAKING MEASUREMENTS ON REDUCED PLANS, THE ABOVE SCALES MAY BE USED.

J.U.L.I.E.
JOINT UTILITY LOCATION INFORMATION FOR EXCAVATION
1-800-892-0123
OR 811

PROJECT ENGINEER: JOE KANNEL
UNIT CHIEF: MICHELE LINDEMANN

CONTRACT NO. 66979



LOCATION OF SECTION INDICATED THUS: - [shaded rectangle] -

RURAL MAJOR COLLECTOR

2009 ADT = 2,500
P.V. = 93%
S.U. = 5%
M.U. = 2%

STATE OF ILLINOIS
DEPARTMENT OF TRANSPORTATION
DIVISION OF HIGHWAYS

SUBMITTED 5-5-09 20 09

George Ryan
DEPUTY DIRECTOR OF HIGHWAYS, REGION ENGINEER

June 26, 2009
Charles J. Ingersoll
ENGINEER OF DESIGN AND ENVIRONMENT

June 26, 2009
Christine M. Reed
DIRECTOR OF HIGHWAYS, CHIEF ENGINEER

**PRINTED BY THE AUTHORITY
OF THE STATE OF ILLINOIS**