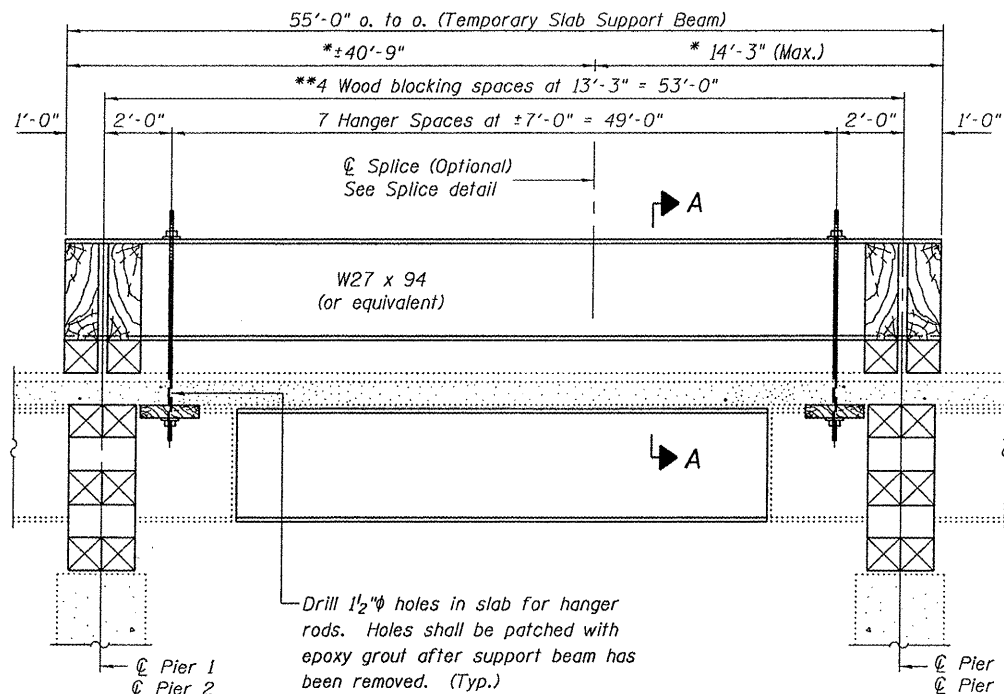


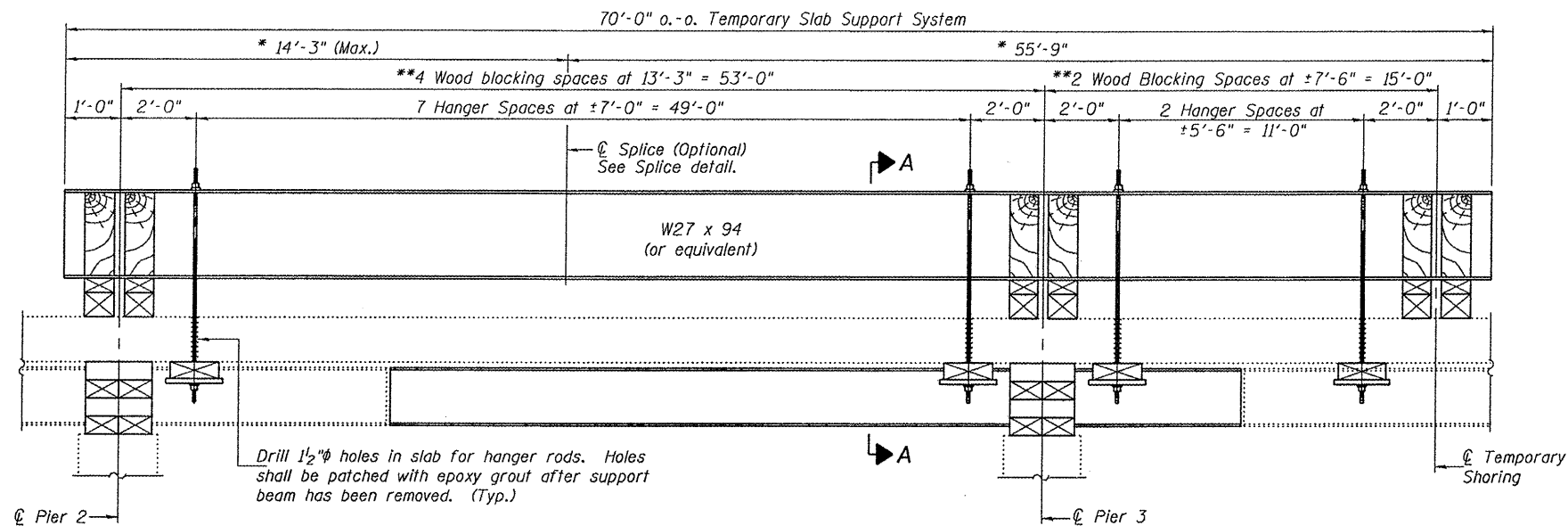
STATE OF ILLINOIS
DEPARTMENT OF TRANSPORTATION

ROUTE NO.	SECTION	COUNTY	DATE	SHEET	SHEET NO. 3
FAP 29	ΔΔ	KNOX	16	11	8 SHEETS
ILLINOIS FEDERAL PROJECT					

Contract Number: 68856 ΔΔ (21-HB-2)1-4

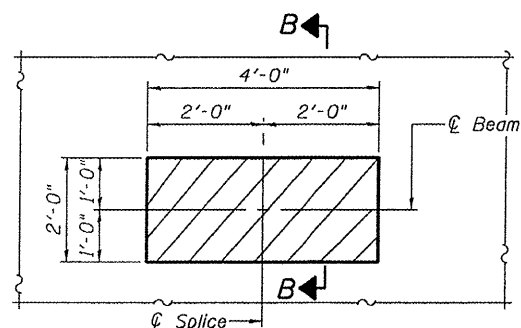


LONGITUDINAL SECTION SUGGESTED
TEMPORARY SLAB SUPPORT SYSTEM
BEAM 1 SPAN 2, AND BEAMS 2 THRU 5 SPAN 3

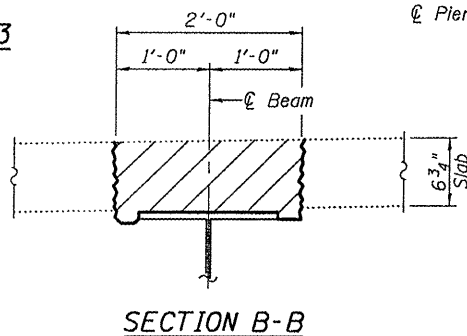


LONGITUDINAL SECTION SUGGESTED
TEMPORARY SLAB SUPPORT SYSTEM SPAN 3
(Span 1 Similar by rotation about Pier 2)

If work on adjacent beam is to be done simultaneously, each beam line will be required to have it's own Temporary Slab Support System.



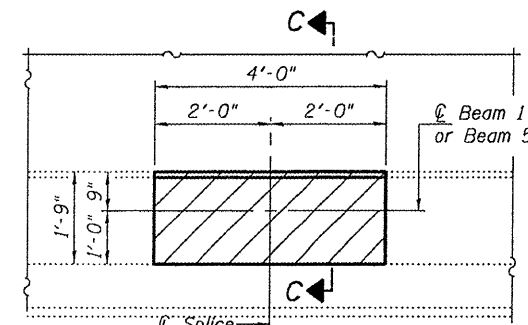
TYPICAL CONCRETE REMOVAL
AWAY FROM SIDEWALK



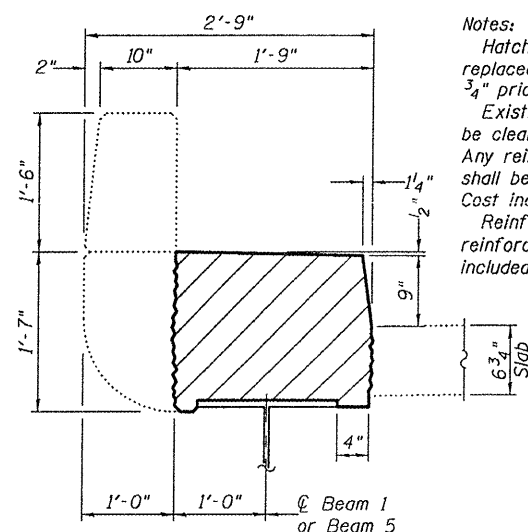
SECTION B-B

* These dimensions may vary for available beams in stock.

**Wood blocking between supports to be placed after support beam deflects under its own weight.

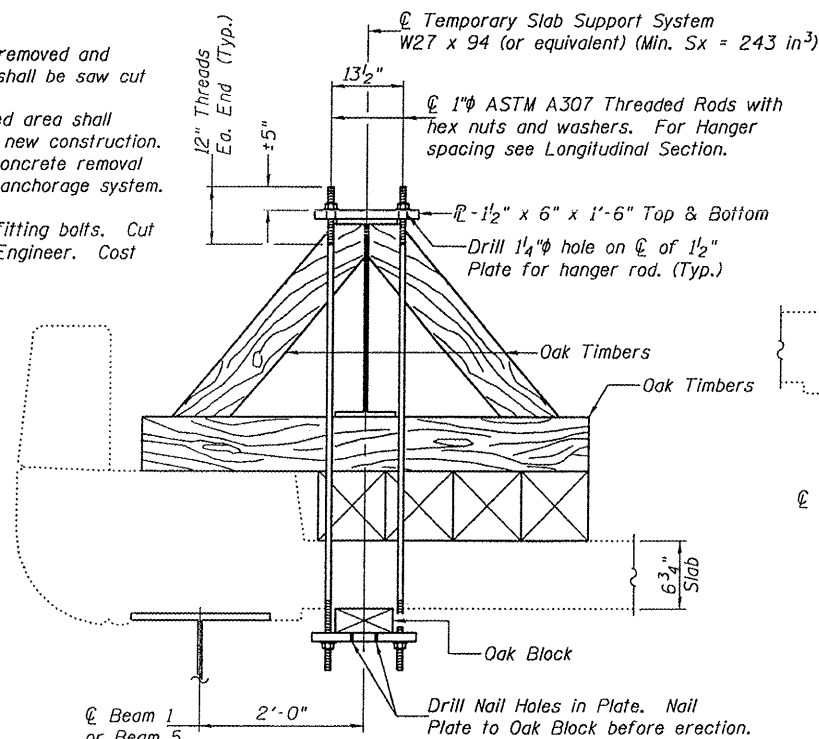


TYPICAL CONCRETE REMOVAL
NEAR SIDEWALK

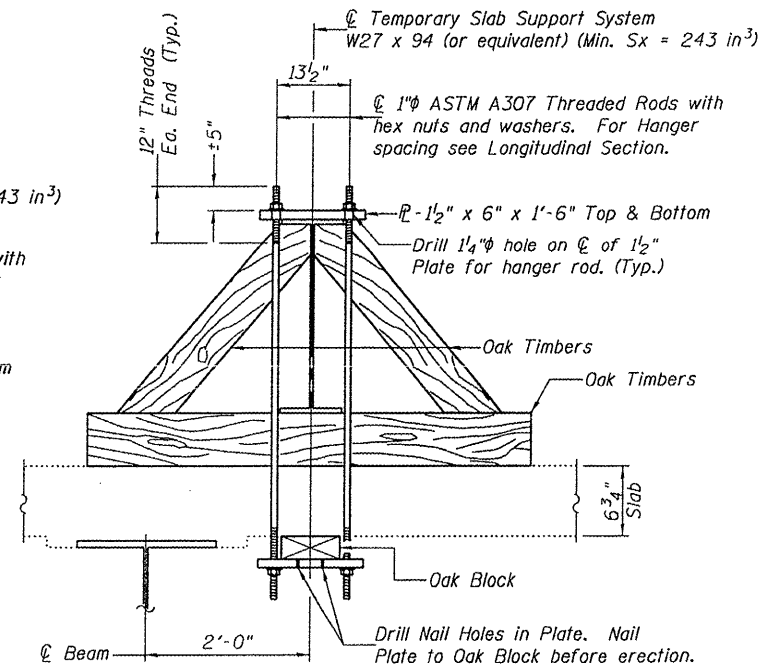


SECTION C-C

Notes:
Hatched areas indicate concrete sections to be removed and replaced. Perimeters of Concrete Removal areas shall be saw cut 3/4" prior to the removal of concrete.
Existing reinforcement extending into the removed area shall be cleaned, straightened and incorporated into the new construction. Any reinforcement bars that are damaged during concrete removal shall be replaced with an approved bar splicer or anchorage system. Cost included with Concrete Removal.
Reinforcement shall be cut only if required for fitting bolts. Cut reinforcement shall be spliced as directed by the Engineer. Cost included with Concrete Removal.



SECTION A-A NEAR SIDEWALK



SECTION A-A AWAY FROM SIDEWALK

CONCRETE REMOVAL & REPLACEMENT
& SLAB SUPPORT SYSTEM
F.A. ROUTE 29
KNOX COUNTY
S.N. 048-0065

DESIGNED	V.H.V.
CHECKED	A.J.B.
DRAWN	Drew Christopher
CHECKED	V.H.V. A.J.B.

EXAMINED	June 18, 2009 A. Carl Prosser ENGINEER OF STRUCTURAL SERVICES
PASSED	Ralph E. Anderson ENGINEER OF BRIDGES AND STRUCTURES