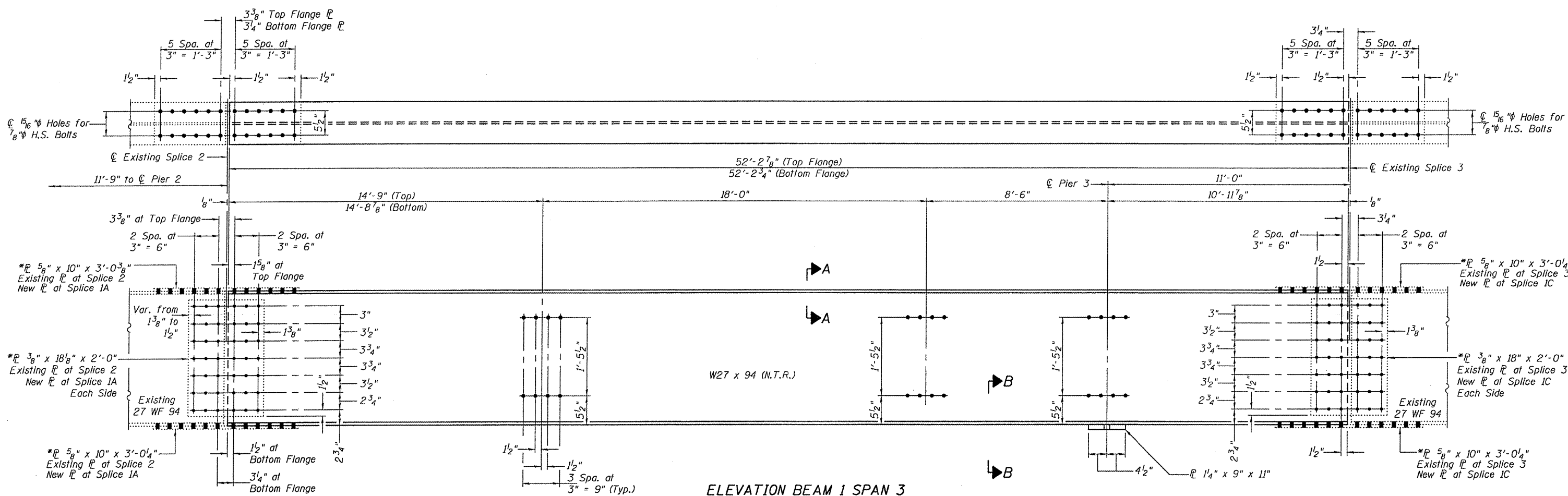


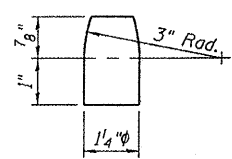
STATE OF ILLINOIS
DEPARTMENT OF TRANSPORTATION

ROUTE NO.	SECTION	EDMITY	DATE	SHEET	SHEET NO. 6 8 SHEETS
FAP 29	ΔΔ	Knox	16	14	
FED. ROAD DIST. NO. 7		ILLINOIS	FED. AID PROJECT		Contract Number: 68856 ΔΔ (21-HB-2)1-4

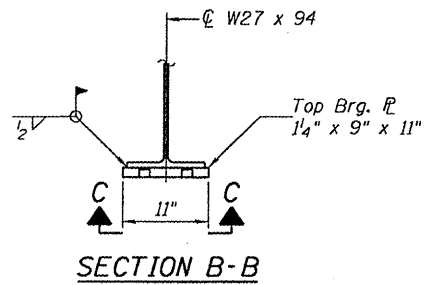


ELEVATION BEAM 1 SPAN 3

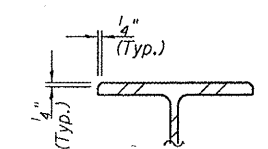
* Holes in existing \bar{L} shall be used to field drill new beam and holes in new \bar{L} shall be used to field drill existing beam.



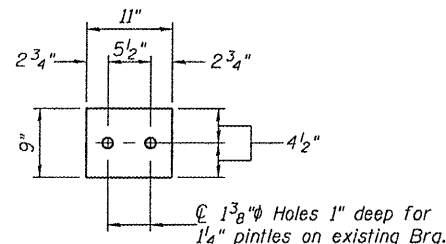
DETAIL OF PINTLE
(For Information Only)



SECTION B-B



SECTION A-A



SECTION C-C

DESIGNED	V.H.V.
CHECKED	A.J.B.
DRAWN	Drew Christopher
CHECKED	V.H.V. A.J.B.

June 18, 2009
 EXAMINED *Carl Proyer*
 ENGINEER OF STRUCTURAL SERVICES
 PASSED *Ralph E. Anderson*
 ENGINEER OF BRIDGES AND STRUCTURES

BEAM DETAILS
F.A. ROUTE 29
KNOX COUNTY
S.N. 048-0065