

68909

STATE OF ILLINOIS

D-94-075-09

SHEET 1

DEPARTMENT OF TRANSPORTATION

DIVISION OF HIGHWAYS

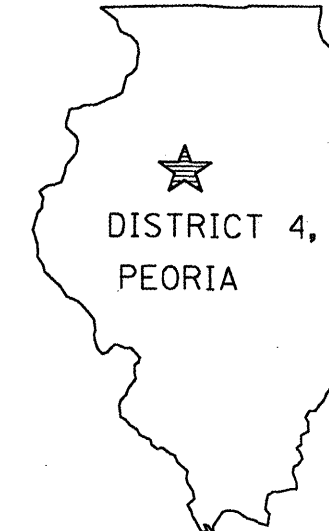
PROPOSED HIGHWAY PLANS

FAI 155 (I 155)

SECTION: [90-(107,107-2,108)HB]P

COUNTY: TAZEWELL

C-94-105-09



INDEX OF SHEETS

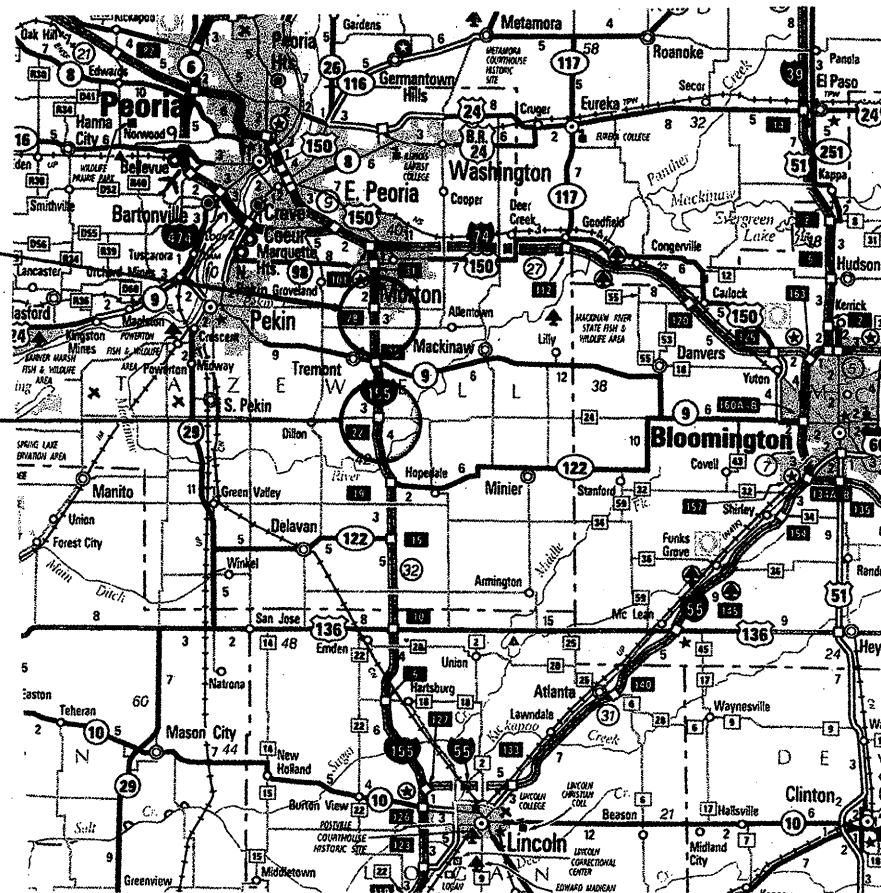
- 1 COVER SHEET
- 2 COMMITMENT SHEET/GENERAL NOTES
- 3 & 4 SUMMARY OF QUANTITIES
- 5-13 PLAN SHEETS

TRAFFIC STANDARDS

- 701101-02
- 701106-02
- 701201-03
- 701901-01
- 701400-03
- 701401-05
- 701402-07
- 701406-05
- 701411-05

090-0132

090-0136 &
090-0137



Project Engineer: Jim Miller 309-67151

DESIGNER: TOM INGLIS 309-671-3481

ADT

I-155 21,000 TOTAL, 3000 TRUCKS

CONTRACT NO. 68909

CATALOG NO. 034260-00D

J.U.L.I.E.

JOINT UTILITY LOCATION INFORMATION FOR EXCAVATION

1-800-892-0123

PRINTED BY THE AUTHORITY
OF THE STATE OF ILLINOIS

STATE OF ILLINOIS
DEPARTMENT OF TRANSPORTATION
DIVISION OF HIGHWAYS

SUBMITTED

4/16 20 09

Joseph E. Crowley

DISTRICT ENGINEER

June 26, 20 09

Charles G. Ingersoll

ENGINEER OF DESIGN AND ENVIRONMENT

June 26, 20 09

Christine M. Reed

DIRECTOR, DIVISION OF HIGHWAYS

COMMITTMENTS

No commitments have been made for this project.

ROUTE	SECTION	COUNTY	TOTAL SHEETS	SHEET NO.
I-155	[90-(107,107-2,108)HB]P	TAZEWELL	13	2

GENERAL NOTES

Cleaning & painting of the existing steel shall be as specified in the special provision for "Cleaning and Painting Existing Steel Structures". All beams, bearings, and all other structural steel shall be cleaned per Near White Blast Cleaning - SSPC SP 10 according to the following schedule.

Bridge 1 - 3 - Entire Structure

The designated paint system shall be Paint System 5 - MCU.
The final finish coat for the interior and exterior shall be according to the following schedule:

Bridge No. 1 - 3 - Paint system 5 shall be used and all exterior fascias including the bottom of the bottom flanges shall be blue (Munsell No. 10B 36). All of the underside shall be painted Light Gray (Munsell No. 5B 71).

QP1 IS REQUIRED FOR THIS CONTRACT.

AIR MONITORS - None for this project

**COMMITMENTS &
GENERAL NOTES**

Summary of Quantities

Code Order

ROUTE		SECTION	COUNTY	SHEET	
FAI	155	[90-(107,107-2,108)HB]P	TAZEWELL	TOTAL	NO.
I	155			13	3
			CONTRACT NO.	68909	

CONSTRUCTION TYPE CODE

TAZEWELL	
SFTY-2A	
100%	
STATE	

CODE No.	ITEM	UNIT	Tot.QTY		
50600600	CLEANING AND PAINTING STEEL BRIDGE NO. 1	L SUM	1	1	
50600700	CLEANING AND PAINTING STEEL BRIDGE NO. 2	L SUM	1	1	
50600800	CLEANING AND PAINTING STEEL BRIDGE NO. 3	L SUM	1	1	
67100100	MOBILIZATION	L SUM	1	1	
70100420	TRAFFIC CONTROL AND PROTECTION, STANDARD 701411	EACH	2	2	
70100805	TRAFFIC CONTROL AND PROTECTION, STANDARD 701402	L SUM	1	1	
X0323984	PORTABLE TEMPORARY BARRIER SYSTEM	FOOT	319	319	
X0323985	RELOCATE PORTABLE TEMPORARY BARRIER SYSTEM	FOOT	2435	2435	
X5060601	CONTAINMENT AND DISPOSAL OF NON-LEAD PAINT CLEANING RESIDUES NO.1	L SUM	1	1	
X5060602	CONTAINMENT AND DISPOSAL OF NON-LEAD PAINT CLEANING RESIDUES NO.2	L SUM	1	1	

Summary of Quantities

Code Order

ROUTE		SECTION	COUNTY	SHEET	
FAI	155	[90-(107,107-2,108)HB]P	TAZEWELL	TOTAL	NO.
I	155			13	4
			CONTRACT NO.	68909	

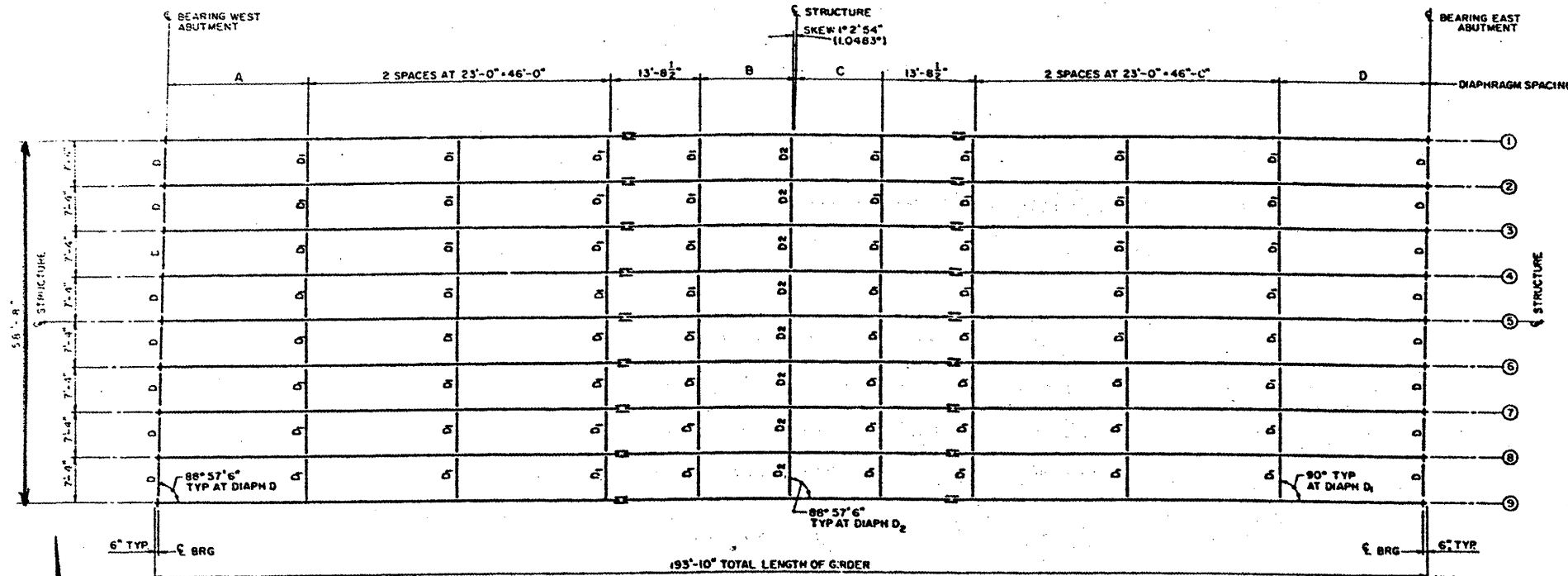
CONSTRUCTION TYPE CODE

TAZEWELL	
SFTY-2A	
100%	
STATE	

CODE No.	ITEM	UNIT	Tot.QTY		
X5060603	CONTAINMENT AND DISPOSAL OF NON-LEAD PAINT CLEANING RESIDUES NO.3	L SUM	1	1	
X7015005	CHANGEABLE MESSAGE SIGN	CAL DA	3	3	

FOR INFORMATION ONLY - 090-0132
42" PLATE GIRDER

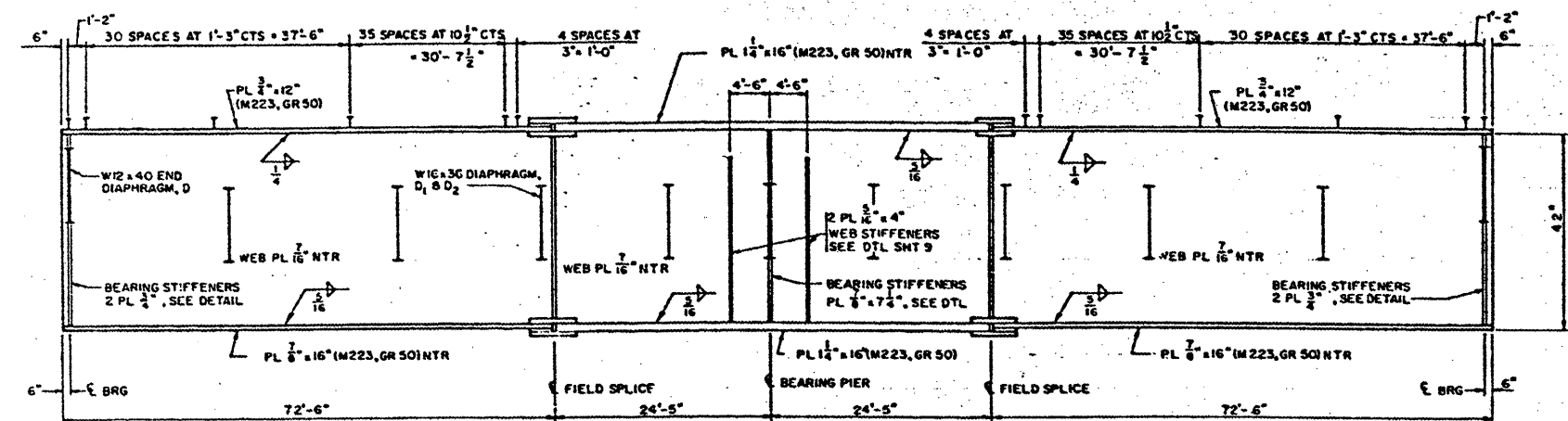
ROUTE	SECTION	COUNTY	TOTAL SHEETS	SHEET NO.
I - 155	[90-(107,107-2,108)HB]P	TAZEWELL	13	6



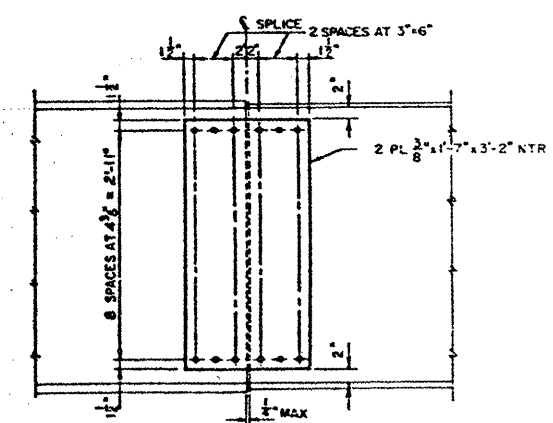
FRAMING PLAN

(SEE SHT 10 FOR DIAPHRAGM DETAILS)

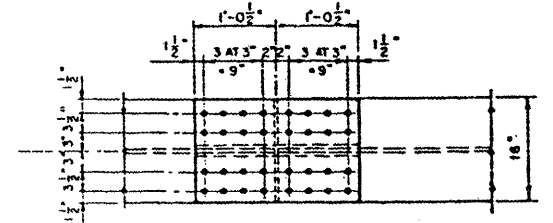
(NTR = NOTCH TOUGHNESS REQUIREMENT)



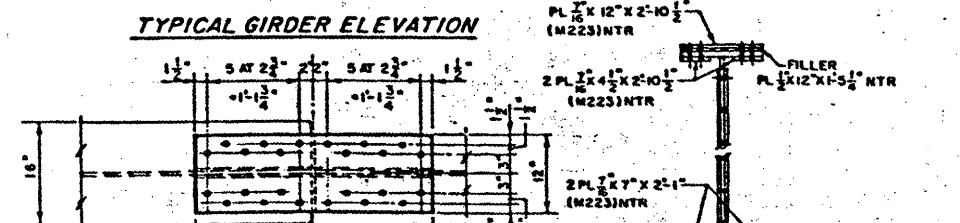
TYPICAL GIRDER ELEVATION



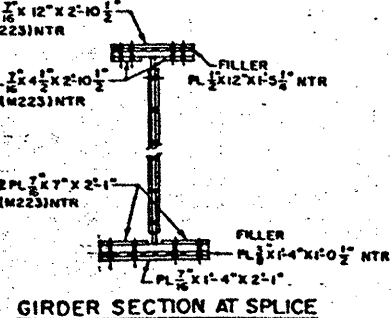
FIELD SPLICE, WEB DETAIL
 (ALL BOLTS 7/8" # H.S. BOLTS)



FIELD SPLICE, BOTTOM FLANGE DETAIL
 (ALL BOLTS 7/8" # H.S. BOLTS)



FIELD SPLICE, TOP FLANGE DETAIL
 (ALL BOLTS 7/8" # H.S. BOLTS)



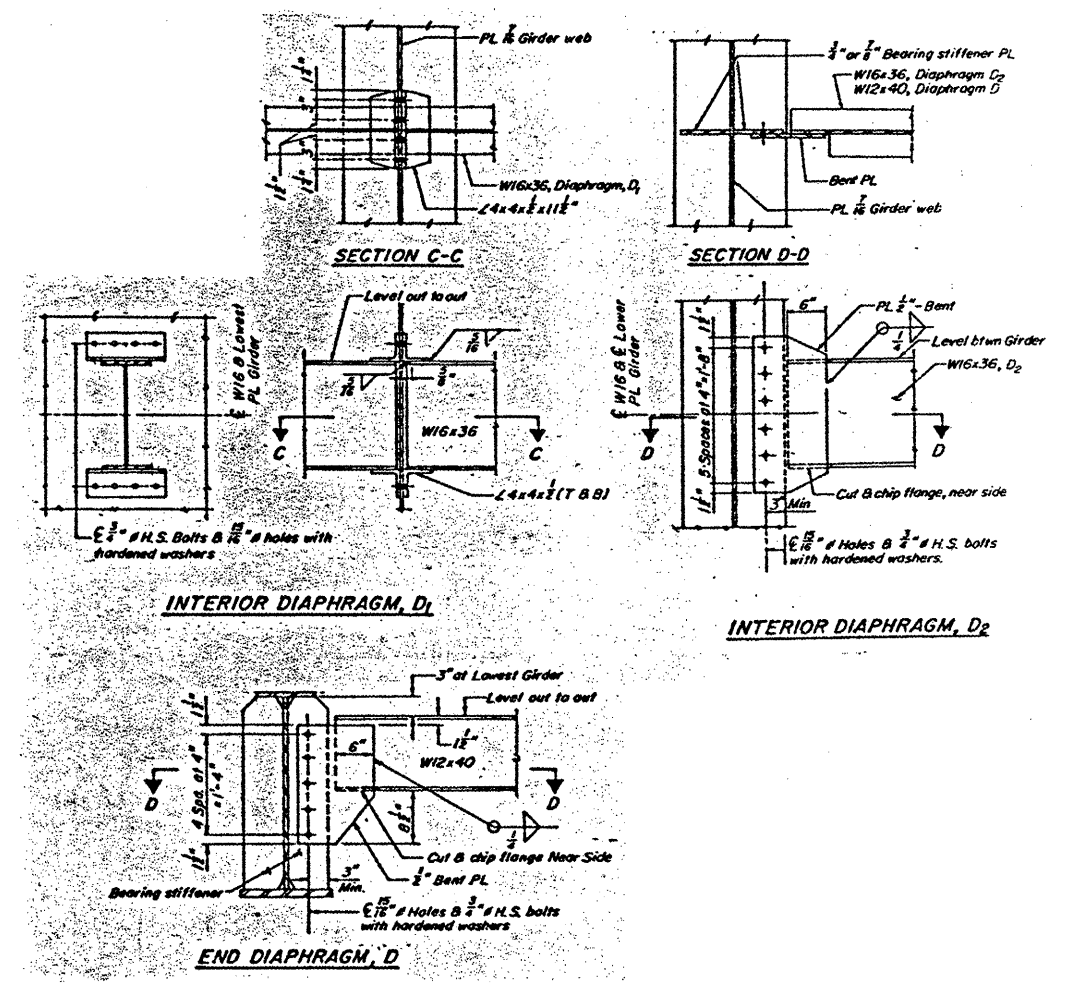
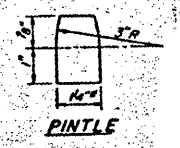
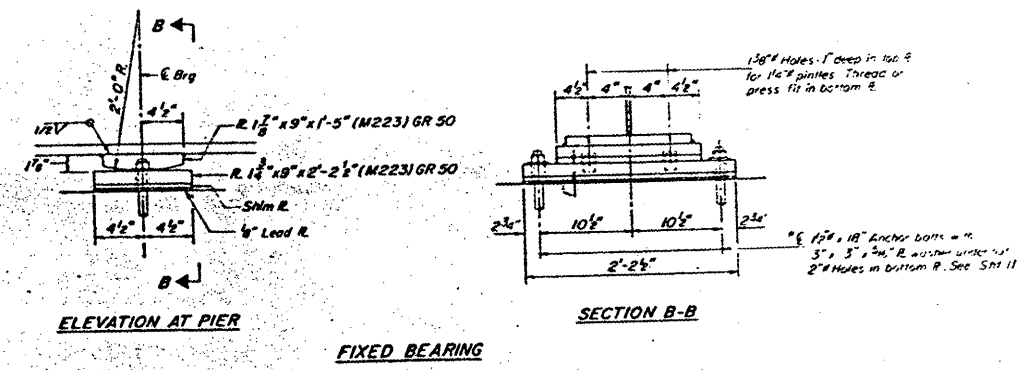
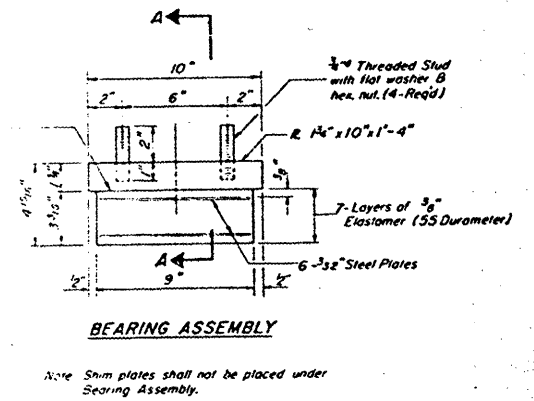
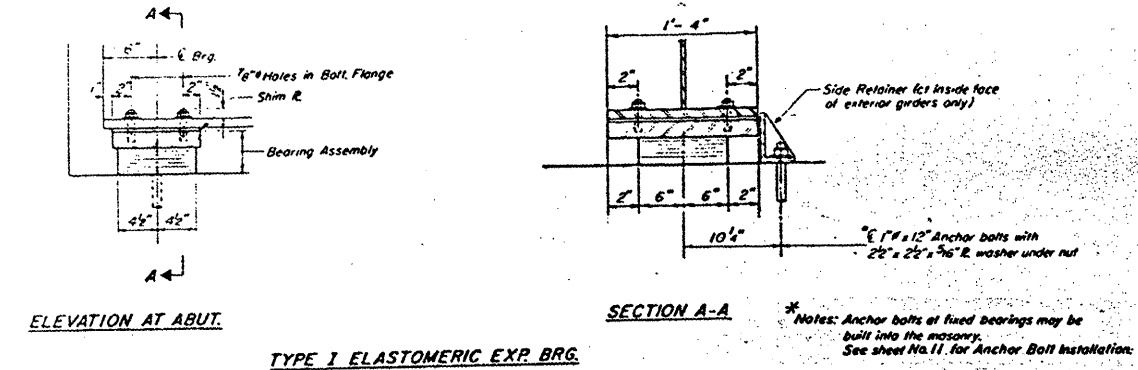
GIRDER SECTION AT SPLICE

PLAN SHEETS

FOR INFORMATION ONLY – 090-0132

BEARINGS & DIAPHRAGMS

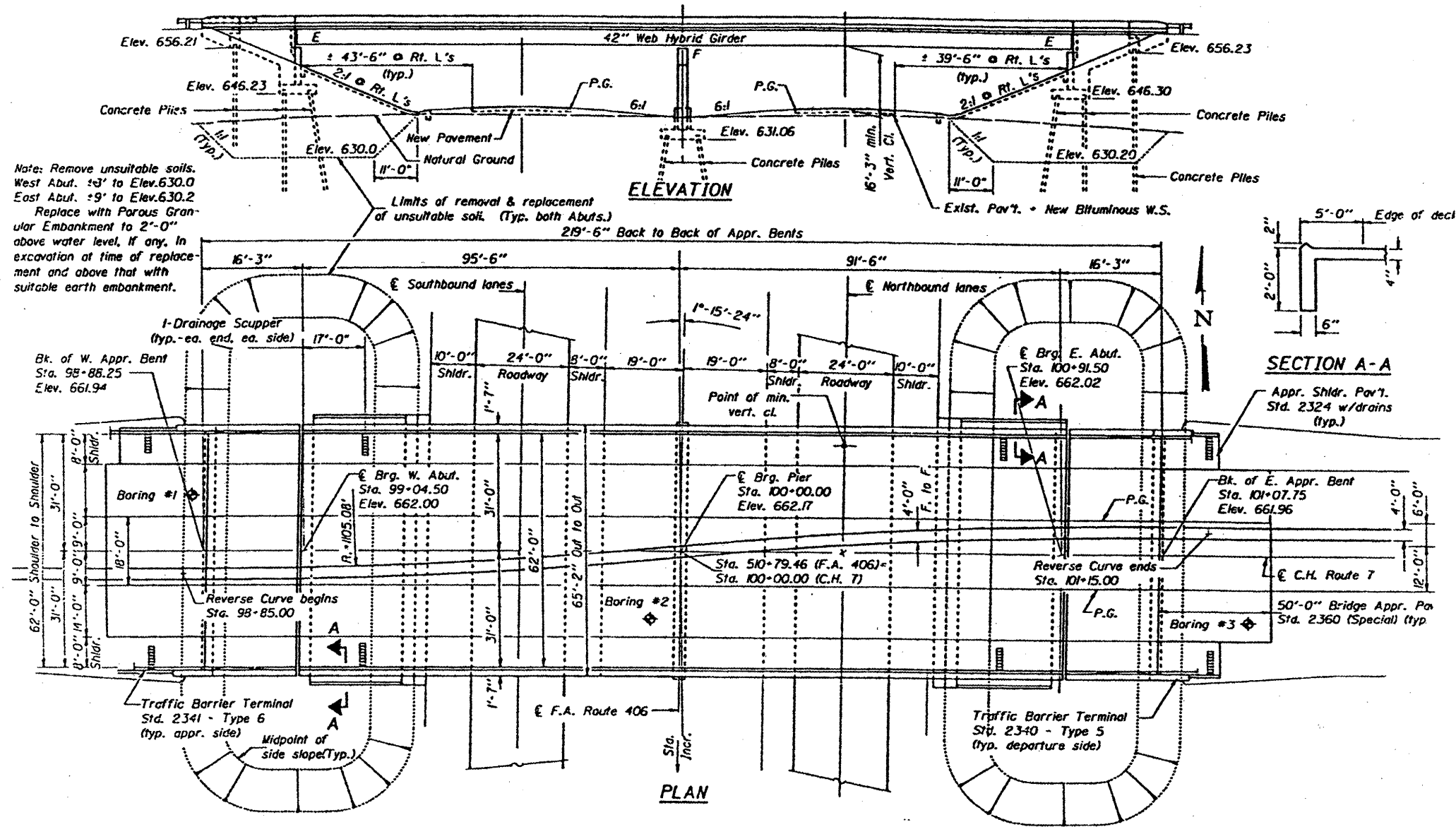
ROUTE	SECTION	COUNTY	TOTAL SHEETS	SHEET NO.
I-155	[90-(107,107-2,108)HB]P	TAZEWELL	13	7



PLAN SHEETS

FOR INFORMATION ONLY – 090-0136
42" PLATE GIRDER

ROUTE	SECTION	COUNTY	TOTAL SHEETS	SHEET NO.
I - 155	[90-(107,107-2,108)HB]P	TAZEWELL	13	8

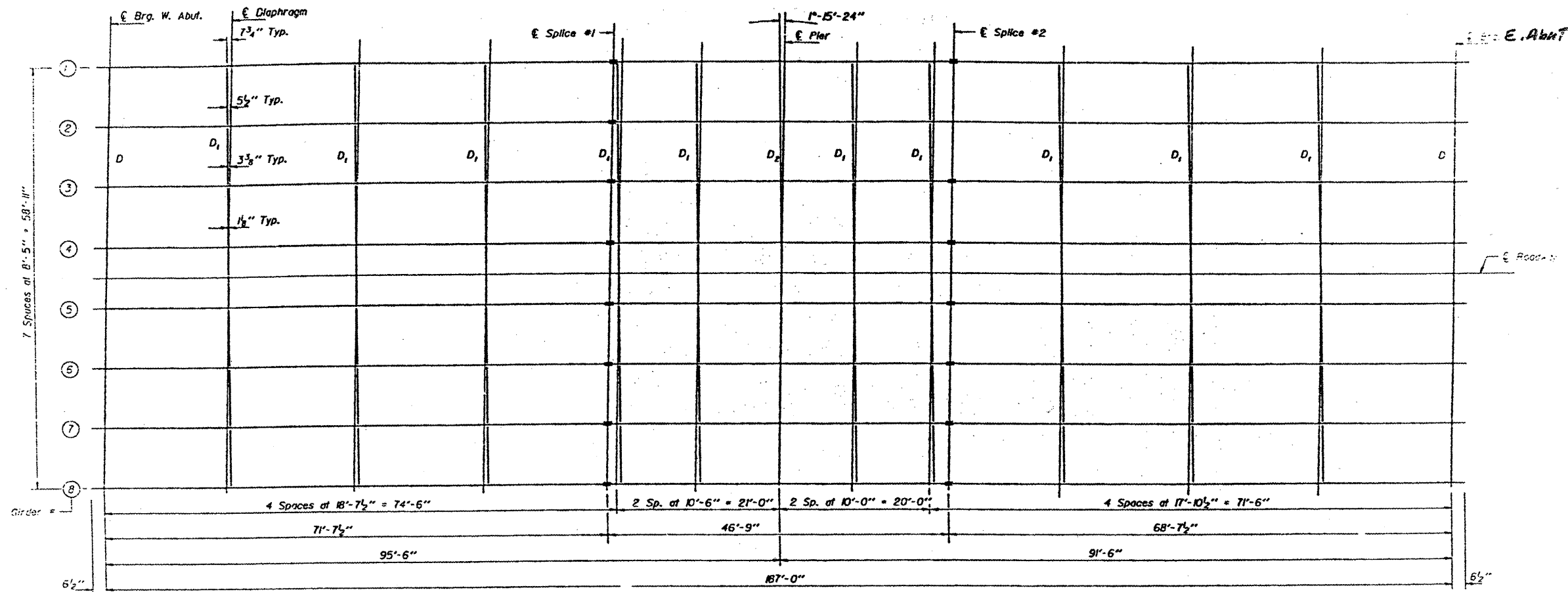


Note: Remove unsuitable soils. West Abut. ±3' to Elev. 630.0 East Abut. ±9' to Elev. 630.2 Replace with Porous Granular Embankment to 2'-0" above water level, if any. In excavation at time of replacement and above that with suitable earth embankment.

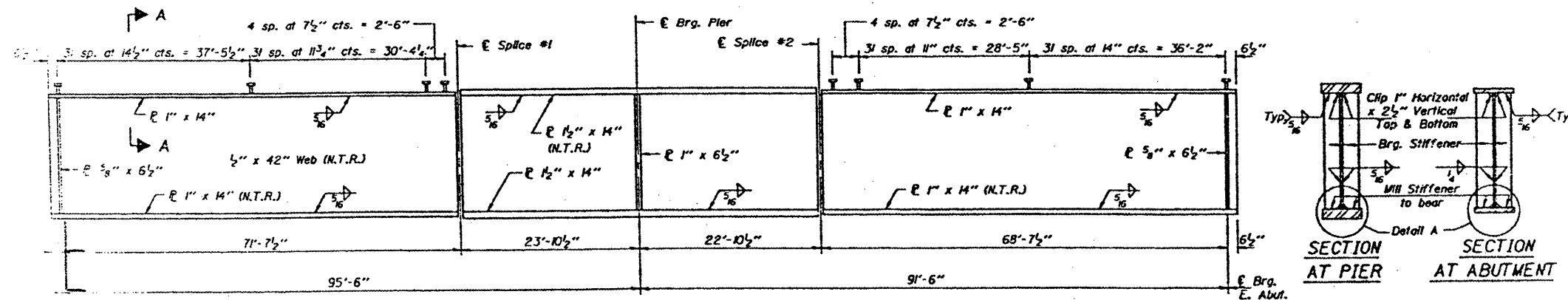
Limits of removal & replacement of unsuitable soil. (Typ. both Abuts.) 219'-6" Back to Back of Appr. Bents

FOR INFORMATION ONLY - 090-0136
42" PLATE GIRDER

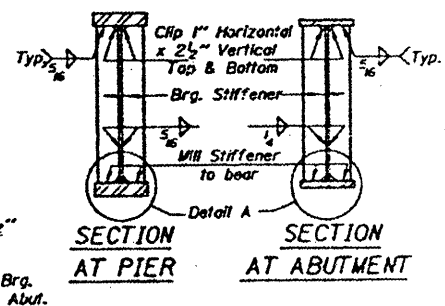
ROUTE	SECTION	COUNTY	TOTAL SHEETS	SHEET NO.
I - 155	[90-(107,107-2,108)HB]P	TAZEWELL	13	9



FRAMING PLAN



GIRDER ELEVATION

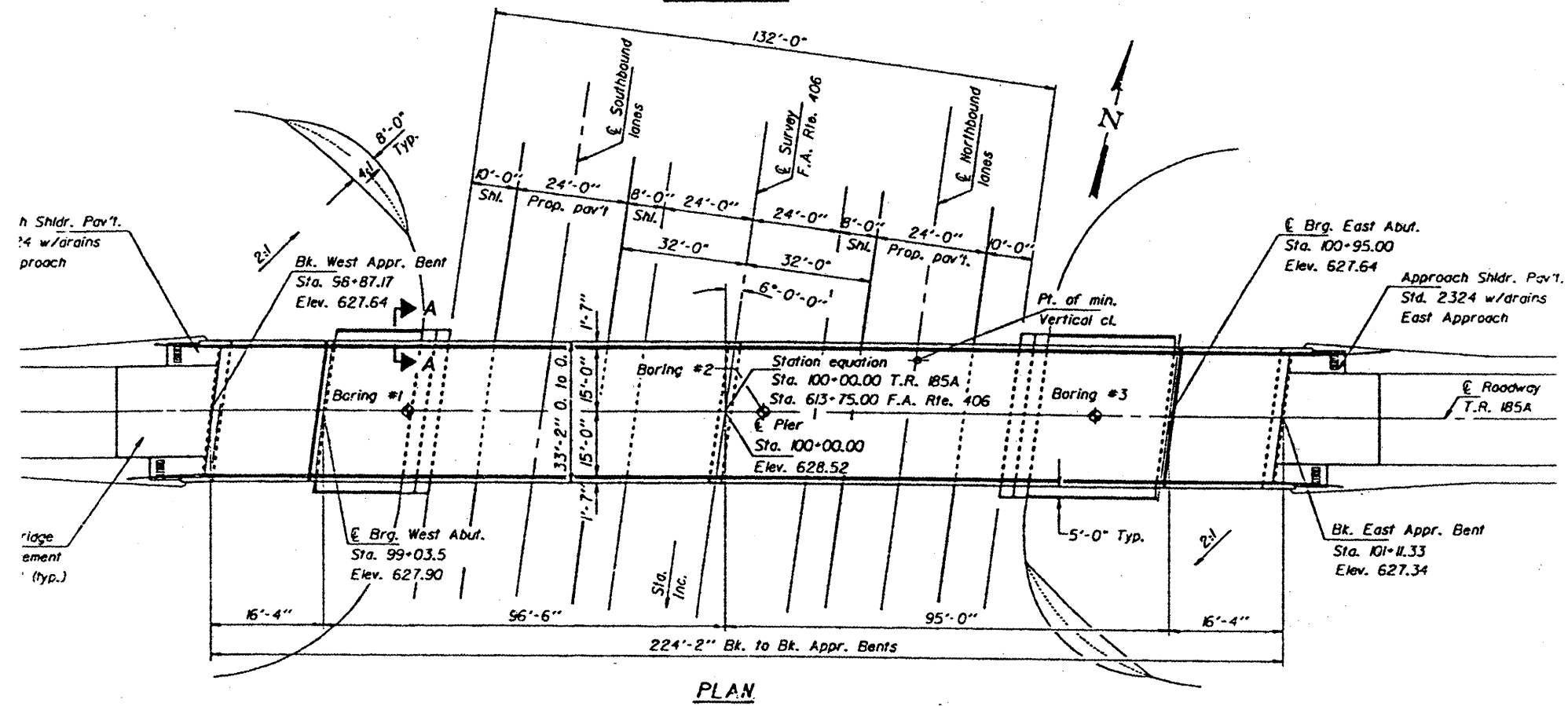
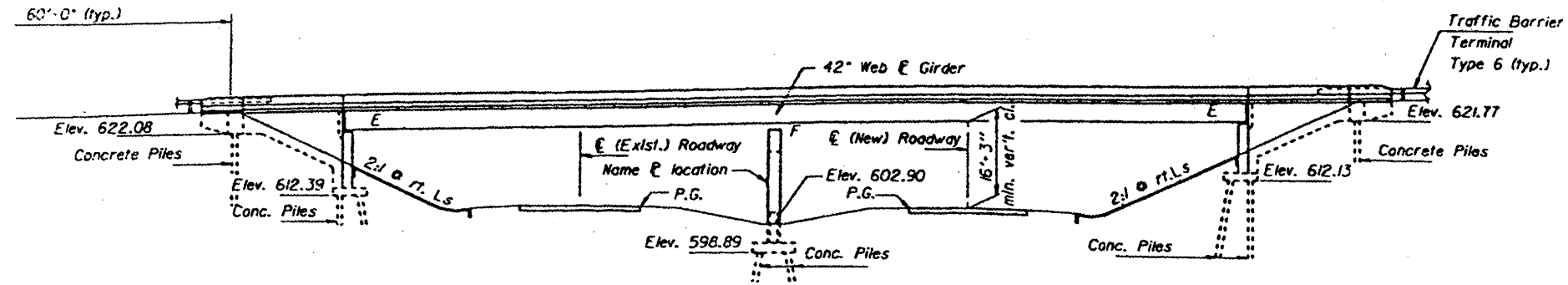


SECTION AT PIER **SECTION AT ABUTMENT**

PLAN SHEETS

FOR INFORMATION ONLY – 090-0137
42" PLATE GIRDER

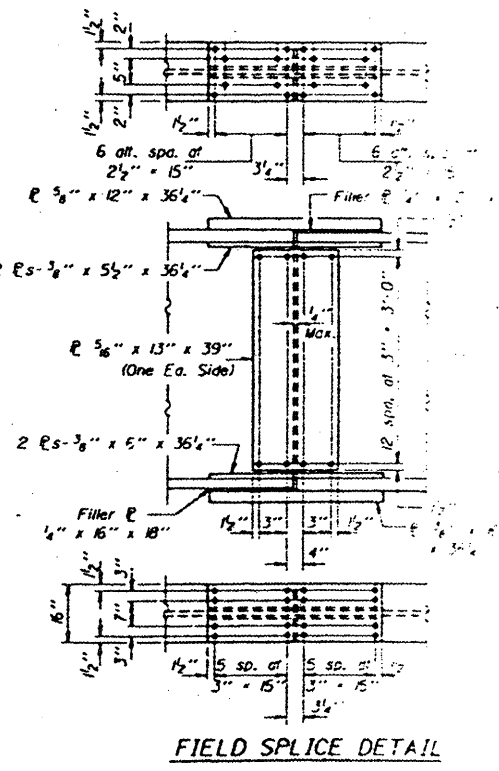
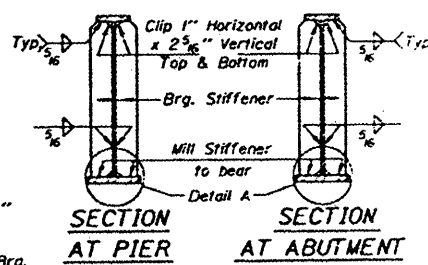
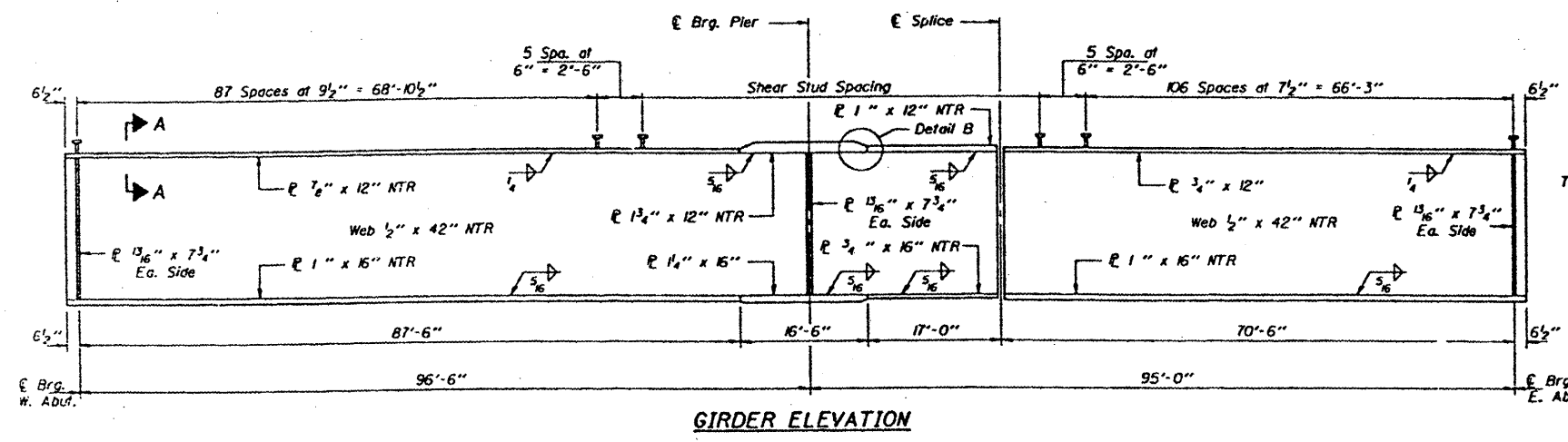
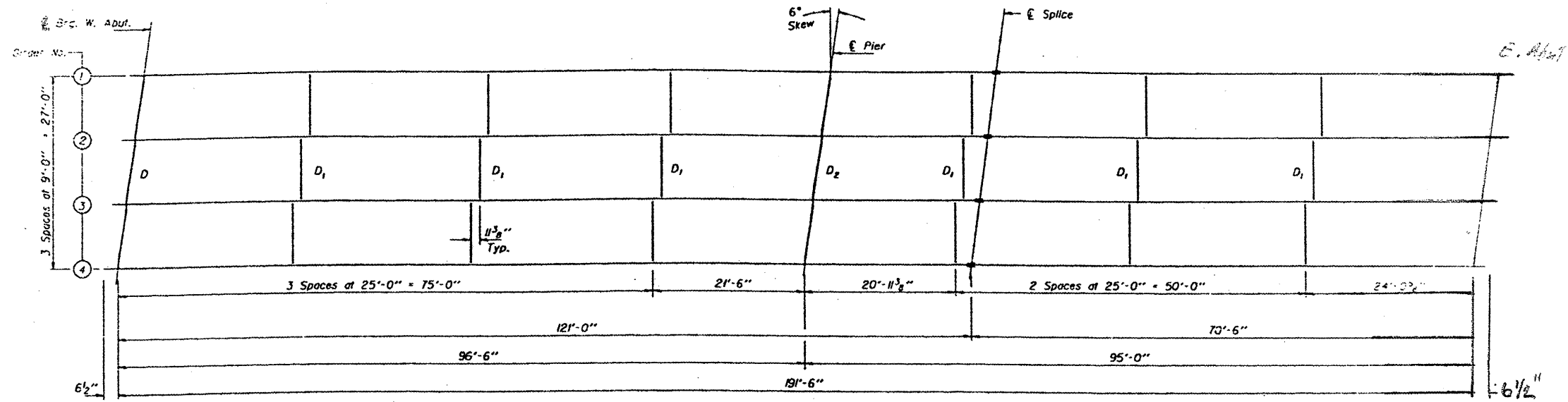
ROUTE	SECTION	COUNTY	TOTAL SHEETS	SHEET NO.
I - 155	[90-(107,107-2,108)HB]P	TAZEWELL	13	11



PLAN SHEETS

FOR INFORMATION ONLY – 090-0137
42" PLATE GIRDER

ROUTE	SECTION	COUNTY	TOTAL SHEETS	SHEET NO.
I - 155	[90-(107,107-2,108)HB]P	TAZEWELL	13	12

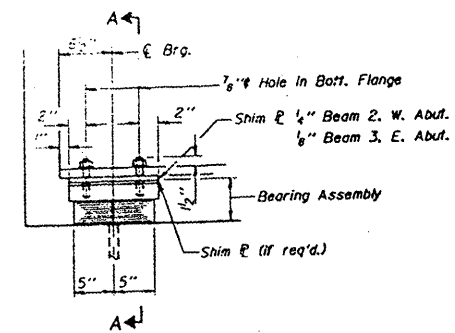


PLAN SHEETS

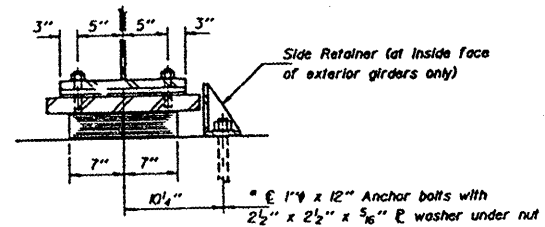
FOR INFORMATION ONLY – 090-0137

BEARINGS & DIAPHRAGMS

ROUTE	SECTION	COUNTY	TOTAL SHEETS	SHEET NO.
I-155	[90-(107,107-2,108)HB]P	TAZEWELL	13	13

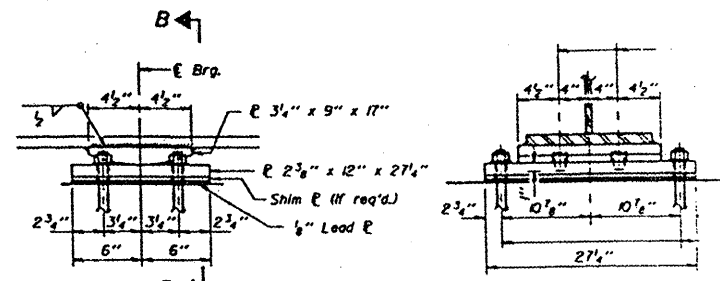


ELEVATION AT ABUTS.



SECTION A-A

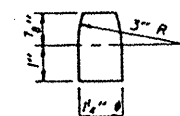
* Notes: Anchor bolts at fixed bearings may be built into the masonry. See sheet #10 of 14 for Anchor Bolt Installation.



ELEVATION AT PIER

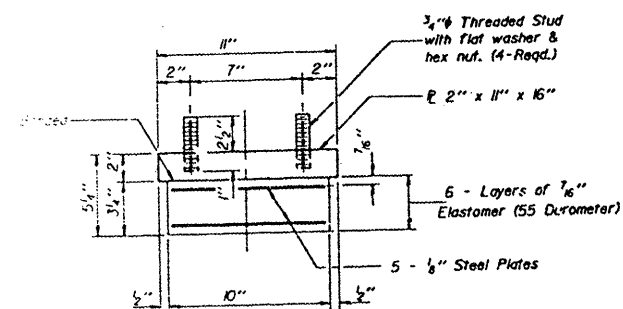
SECTION B-B

FIXED BEARING

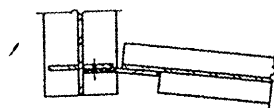


PINTLE

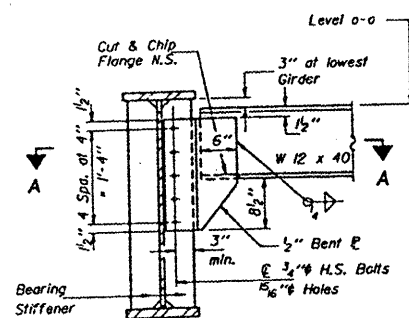
TYPE I ELASTOMERIC EXP. BRG.



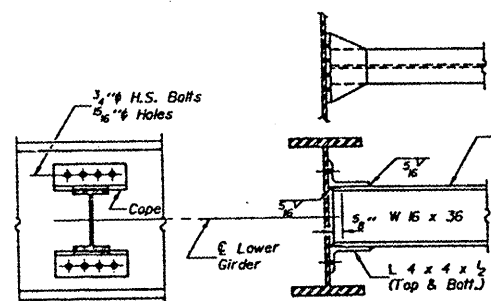
BEARING ASSEMBLY WEST ABUT.



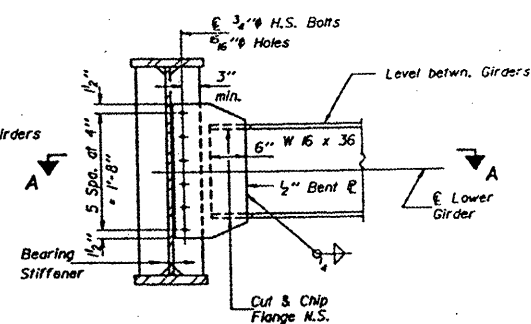
SECTION A-A



DIAPHRAGM D
6 Required



DIAPHRAGM D₁
18 Required



DIAPHRAGM D₂
3 Required

PLAN SHEETS