

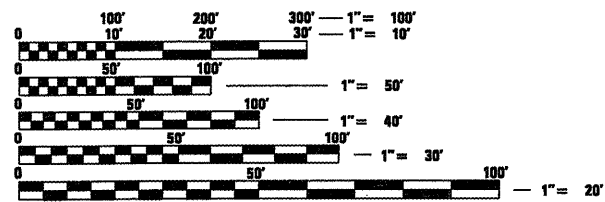
F.A.P. RTE.	SECTION	COUNTY	TOTAL SHEETS	SHEET NO.
666	SPZ(RS-5), 26CS(RS)	SANGAMON	17	1
		ILLINOIS	CONTRACT NO. 72C00	

INDEX OF SHEETS

- 1 COVER SHEET
- 2 GENERAL NOTES
- 3, 4 SUMMARY OF QUANTITIES
- 5-7 TYPICAL CROSS SECTIONS
- 8, 9 SCHEDULES OF QUANTITIES
- 10-13 PLAN SHEETS
- 14 PLAN SHEET /SIDE ROAD DETAIL
- 15-17 TRAFFIC SIGNAL DETECTOR LOOP DETAIL

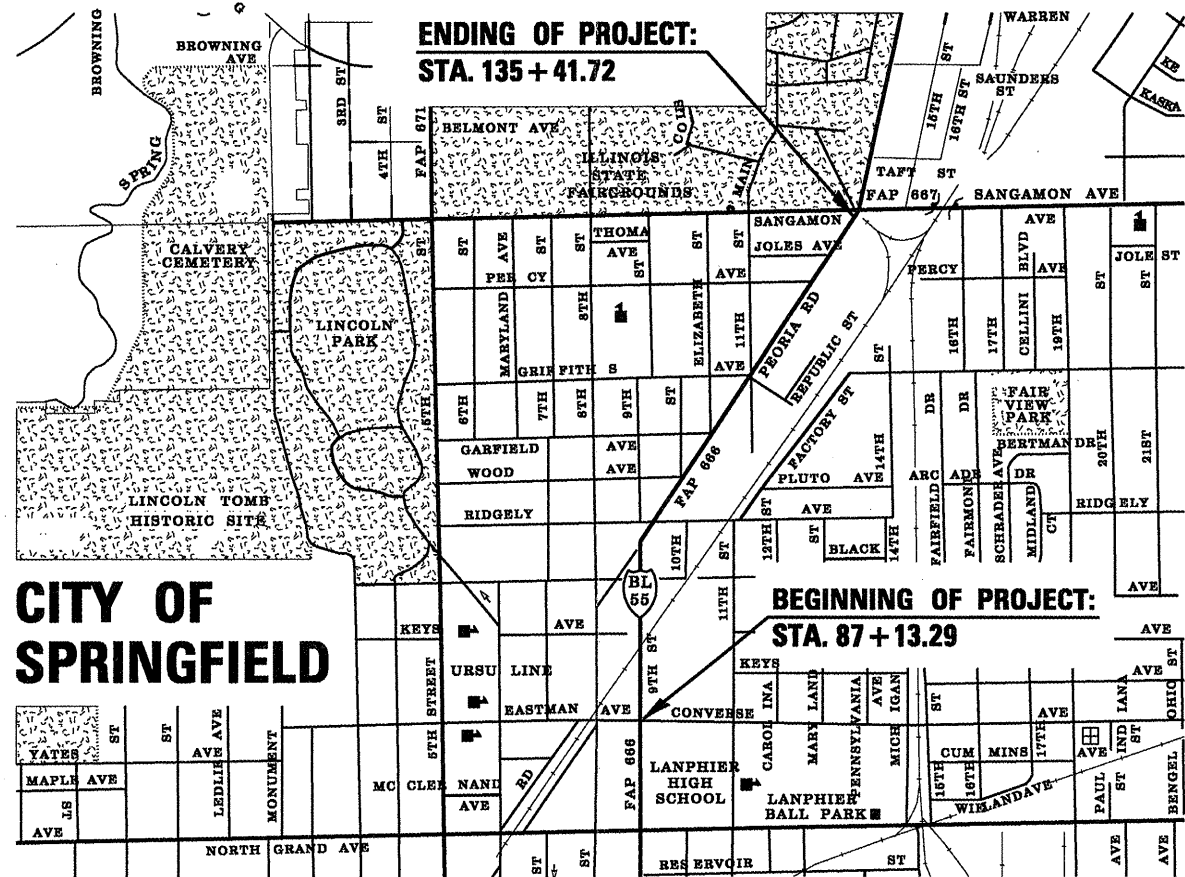
STANDARDS

- 000001-05
- 424001-05
- 442201-03
- 606001-04
- 701602-04
- 701606-06
- 701801-04
- 701901-01
- 780001-02
- 781001-03
- 701701-06



FULL SIZE PLANS HAVE BEEN PREPARED USING STANDARD ENGINEERING SCALES. REDUCED SIZED PLANS WILL NOT CONFORM TO STANDARD SCALES. IN MAKING MEASUREMENTS ON REDUCED PLANS, THE ABOVE SCALES MAY BE USED.

J.U.L.I.E.
JOINT UTILITY LOCATION INFORMATION FOR EXCAVATION
1-800-892-0123
OR 811



LOCATION MAP

GROSS LENGTH = 4,828.43 FT. = 0.9144 MILES
NET LENGTH = 4,828.43 FT. = 0.9144 MILES

STATE OF ILLINOIS DEPARTMENT OF TRANSPORTATION

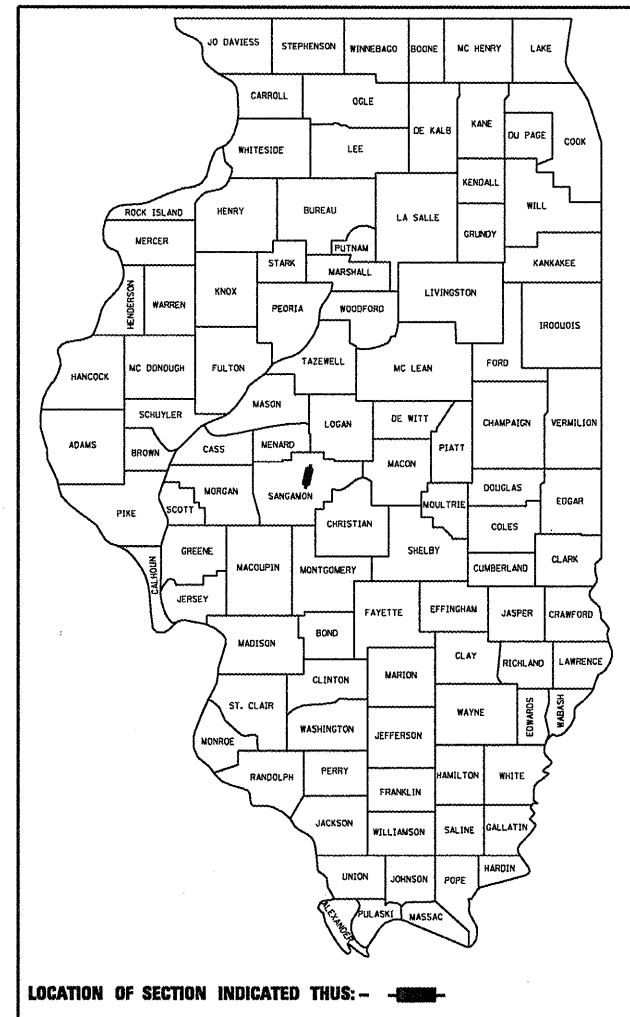
DIVISION OF HIGHWAYS

PROPOSED HIGHWAY PLANS

FAP ROUTE 666 (BUSINESS 55)
SECTION SPZ(RS-5), 26CS(RS)

3P RESURFACING FOR BUSINESS 55
SANGAMON COUNTY
C-96-102-09

D-96-102-09



LOCATION OF SECTION INDICATED THUS: - [black rectangle] -

STATE OF ILLINOIS
DEPARTMENT OF TRANSPORTATION
DIVISION OF HIGHWAYS

SUBMITTED June 5, 2009
[Signature]
DEPUTY DIRECTOR OF HIGHWAYS, REGION ENGINEER
June 26, 2009
[Signature]
ENGINEER OF DESIGN AND ENVIRONMENT
June 26, 2009
[Signature]
DIRECTOR OF HIGHWAYS, CHIEF ENGINEER

PRINTED BY THE AUTHORITY
OF THE STATE OF ILLINOIS

PROJECT ENGINEER: SAL MADONIA (217) 782-4761
SQUAD LEADER: TOM COX (217) 524-7940

CONTRACT NO. 72C00

Rel.

GENERAL NOTES

1. ANY REFERENCE TO A STANDARD IN THESE PLANS SHALL BE INTERPRETED TO MEAN THE EDITION AS INDICATED BY THE SUB NUMBER LISTED IN THE INDEX OF SHEETS OR THE COPY OF THE STANDARD INCLUDED IN THESE PLANS.
2. IN ADDITION TO FIELD SURVEYS, PLAN DIMENSIONS AND DETAILS RELATIVE TO THE EXISTING FACILITIES HAVE BEEN TAKEN FROM EXISTING PLANS AND ARE SUBJECT TO CONSTRUCTION VARIATIONS. IT SHALL BE THE CONTRACTOR'S RESPONSIBILITY TO VERIFY SUCH DIMENSIONS AND DETAILS IN THE FIELD. SUCH VARIATIONS SHALL NOT BE A CAUSE FOR ADDITIONAL COMPENSATION DUE TO A CHANGE IN THE SCOPE OF WORK, HOWEVER, THE CONTRACTOR WILL BE PAID FOR THE QUANTITY ACTUALLY FURNISHED AT THE UNIT PRICE BID FOR THE WORK.
3. ACCESS TO ALL ENTRANCES AND SIDE ROADS SHALL BE MAINTAINED AT ALL TIMES.
4. THE CONTRACTOR SHALL BE RESPONSIBLE FOR PROTECTING UTILITY PROPERTY FROM CONSTRUCTION OPERATIONS, AS OUTLINED IN ARTICLE 107.31 OF THE STANDARD SPECIFICATIONS. THE J.U.L.I.E. NUMBER IS 1-800-892-0123. A MINIMUM OF 48 HOURS ADVANCE NOTICE IS REQUIRED.
5. THE THICKNESS OF BITUMINOUS MIXTURES SHOWN ON THE PLANS IS THE NOMINAL THICKNESS. DEVIATIONS FROM THE NOMINAL THICKNESS WILL BE PERMITTED WHEN SUCH DEVIATIONS OCCUR DUE TO IRREGULARITIES IN THE EXISTING SURFACE OR BASE ON WHICH THE BITUMINOUS MIXTURE IS PLACED.
6. ALL SAW CUTS, NECESSARY TO COMPLETE THE WORK DETAILED IN THESE PLANS, SHALL BE INCLUDED IN THE COST FOR THE VARIOUS PAY ITEMS INVOLVED.
7. UNLESS DIRECTED BY THE ENGINEER, PAVEMENT MARKING LINES SHALL NOT BE LAID DIRECTLY OVER A LONGITUDINAL CRACK OR JOINT NOR OVER A TAR OR ASPHALT PAINTED LINE. THE EDGE OF A CENTERLINE OR LANE LINE SHALL BE OFFSET A MINIMUM DISTANCE OF 2" FROM A LONGITUDINAL CRACK OR JOINT. EDGE LINES SHALL BE APPROXIMATELY 2" FROM THE EDGE LINE OF PAVEMENT. SEE SECTION 780 OF THE STANDARD SPECIFICATIONS FOR TRAFFIC CONTROL ITEMS.
8. THE FOLLOWING RATES OF APPLICATION HAVE BEEN USED TO CALCULATE THE PLAN QUANTITIES:

BITUMINOUS MATERIALS (PRIME COAT)	0.00038 TON/SQ. YD. (ON PAVEMENT)
BITUMINOUS MATERIALS (PRIME COAT)	0.001425 TON/SQ.YD. (ON AGG)
AGGREGATE PRIME COAT	0.002 TON/SQ. YD.
BITUMINOUS CONCRETE SURFACE	0.056 TON/SQ. YD. PER 1"
AGGREGATE MATERIAL	2.05 TON/CU. YD.
9. THE EXISTING ROAD SIGNS THAT INTERFERE WITH CONSTRUCTION WILL BE REMOVED OR RELOCATED AS DIRECTED BY THE ENGINEER. AFTER THE CONSTRUCTION IS COMPLETED, THE CONTRACTOR WILL REPLACE THE SIGNS AS DIRECTED BY THE ENGINEER. THIS WORK WILL NOT BE PAID SEPARATELY BUT SHALL BE CONSIDERED INCLUDED IN THE CONTRACT, AND NO COMPENSATION WILL BE ALLOWED.
10. WHERE SECTION OR SUB-SECTION MARKERS ARE ENCOUNTERED, THE ENGINEER SHALL BE NOTIFIED BEFORE SUCH MONUMENTS ARE REMOVED. THE CONTRACTOR SHALL PROTECT AND CAREFULLY PRESERVE ALL PROPERTY MARKERS AND MONUMENTS UNTIL THE OWNER, AN AUTHORIZED AGENT OR LAND SURVEYOR HAS WITNESSED OR OTHERWISE REFERENCED THEIR LOCATION.
11. LIMITS OF CONSTRUCTION ALONG SIDE ROADS SHALL BE VERIFIED AND APPROVED BY THE ENGINEER BEFORE WORK BEGINS. LIMITS MAY BE ADJUSTED FROM PROPOSED PLAN LAYOUT IF ENGINEER DEEMS NECESSARY.
12. EXISTING MANHOLES AND INLET FRAMES & LIDS DAMAGED BY THE CONTRACTOR'S OPERATION SHALL BE REPLACED WITH NEW FRAMES AND LIDS AT THE CONTRACTOR'S EXPENSE.
13. THE DISTRICT BUREAU OF OPERATIONS SHALL BE NOTIFIED AT LEAST 14 DAYS PRIOR TO PLACEMENT OF FINAL PAVEMENT MARKINGS, PHONE (217) 782-7314.
14. PRIOR TO THE START OF RESURFACING OPERATIONS, THE CONTRACTOR, IN THE PRESENCE OF THE ENGINEER, SHALL MEASURE AND DOCUMENT THE EXISTING VERTICAL CLEARANCE AT THE RAILROAD STRUCTURE. MEASUREMENTS SHALL BE TAKEN AT THE EDGE OF EACH LANE. IF NECESSARY, THE ENGINEER SHALL MAKE ADJUSTMENTS TO THE RESURFACING THICKNESS SHOWN IN THE PLANS TO MAINTAIN THE EXISTING VERTICAL CLEARANCE.
15. ALL OF THE DISTURBED AREAS WITHIN THE RIGHT OF WAY NOT COVERED BY SURFACING MATERIAL SHALL BE SEEDED. THE COST OF SEEDING AND FERTIZER SHALL NOT BE PAID FOR SEPERATELY BUT INCLUDED IN THE COST OF THE ASSOCIATED PAY ITEM.

THE FOLLOWING MIXTURE REQUIREMENTS ARE APPLICABLE FOR THIS PROJECT:

BUSINESS LOOP 55 (CONVERSE AVE. TO SANGAMON AVE.)	
MIXTURE USE(S):	HMA SURFACE
AC/PG:	PG 64-22
DESIGN AIR VOIDS:	4.0% @ N DESIGN = 50
MIXTURE COMPOSITION: (GRADATION MIXTURE)	IL 9.5 OR 12.5
FRICTION AGREGATE:	MIX "D"

INCIDENTAL HMA BITUMINOUS SURFACING (SIDE ROADS)	
MIXTURE USE(S):	INCIDENTAL SURFACING
AC/PG:	PG 64-22
DESIGN AIR VOIDS:	4.0% @ N DESIGN = 50
MIXTURE COMPOSITION: (GRADATION MIXTURE)	IL 9.5 OR 12.5
FRICTION AGREGATE:	MIX "C"

DISTRICT SIX	
EXAMINED <u>June 3</u> 20 <u>09</u>	
<i>Sam J. Heasler</i>	
OPERATIONS ENGINEER	

EXAMINED <u>June 3</u> 20 <u>09</u>	
<i>Ronnie J. Heasler</i>	
PROGRAM IMPLEMENTATION ENGINEER	

EXAMINED <u>June 3</u> 20 <u>09</u>	
<i>DRML</i>	
PROGRAM DEVELOPMENT ENGINEER	

SUMMARY OF QUANTITIES				URBAN	
				100% STATE	
				CONSTRUCTION TYPE CODE	
CODE NO.	PAY ITEM	UNIT	TOTAL QUANTITIES	I000-2A	
40600200	BITUMINOUS MATERIALS (PRIME COAT)	TON	8.9	8.9	
40600300	AGGREGATE (PRIME COAT)	TON	47	47	
40600895	CONSTRUCTING TEST STRIP	EACH	1	1	
40600982	HOT-MIX ASPHALT SURFACE REMOVAL - BUTT JOINT	SQ YD	663	663	
40600990	TEMPORARY RAMP	SQ YD	437	437	
40603335	HOT-MIX ASPHALT SURFACE COURSE, MIX "D", N50	TON	1,925	1,925	
40800050	INCIDENTAL HOT-MIX ASPHALT SURFACING	TON	56	56	
42400100	PORTLAND CEMENT CONCRETE SIDEWALK 4 INCH	SQ FT	255	255	
42400800	DETECTABLE WARNINGS	SQ FT	48	48	
44000155	HOT-MIX ASPHALT SURFACE REMOVAL, 1 1/2"	SQ YD	22,914	22,914	
44000200	DRIVEWAY PAVEMENT REMOVAL	SQ YD	4	4	
44000600	SIDEWALK REMOVAL	SQ FT	247	247	
44001700	COMBINATION CONCRETE CURB AND GUTTER REMOVAL AND REPLACEMENT	FOOT	608	608	
44200168	PAVEMENT PATCHING, TYPE II, 14 INCH	SQ YD	44	44	
44200172	PAVEMENT PATCHING, TYPE III, 14 INCH	SQ YD	222	222	
44200174	PAVEMENT PATCHING, TYPE IV, 14 INCH	SQ YD	527	527	
60300305	FRAMES AND LIDS TO BE ADJUSTED	EACH	14	14	
67000500	ENGINEER'S FIELD OFFICE, TYPE B	CAL MO	3	3	
67100100	MOBILIZATION	L SUM	1	1	
70102625	TRAFFIC CONTROL AND PROTECTION, STANDARD 701606	L SUM	1	1	
70102632	TRAFFIC CONTROL AND PROTECTION, STANDARD 701602	L SUM	1	1	
70102635	TRAFFIC CONTROL AND PROTECTION, STANDARD 701701	L SUM	1	1	
70102640	TRAFFIC CONTROL AND PROTECTION, STANDARD 701801	L SUM	1	1	
70103815	TRAFFIC CONTROL SURVEILLANCE	CAL DA	10	10	
70300100	SHORT-TERM PAVEMENT MARKING	FOOT	1,932	1,932	
70300210	TEMPORARY PAVEMENT MARKING - LETTERS AND SYMBOLS	SQ FT	35.2	35.2	

FILE NAME =	USER NAME = loughlinr1	DESIGNED -	REVISED -
c:\pwork\PWIDOT\LAUGHLINRL\d0144500\72C00-sh1-500.dgn		DRAWN -	REVISED -
PLOT SCALE = 40.0000 / IN.		CHECKED -	REVISED -
PLOT DATE = Jun-05-2009 01:00:04PM		DATE -	REVISED -

**STATE OF ILLINOIS
DEPARTMENT OF TRANSPORTATION**

**SUMMARY OF QUANTITIES
BUSINESS 55**

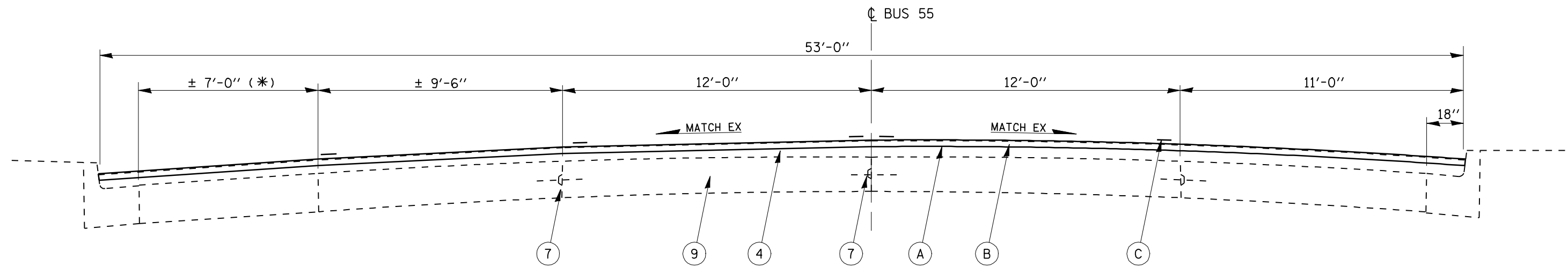
SCALE: SHEET NO. 1 OF 2 SHEETS STA. TO STA.

F.A.P. RTE.	SECTION	COUNTY	TOTAL SHEETS	SHEET NO.
666	SP2(RS-5),26CS(RS)	SANGAMON	17	3
CONTRACT NO. 72C00				
ILLINOIS FED. AID PROJECT				

Rev.

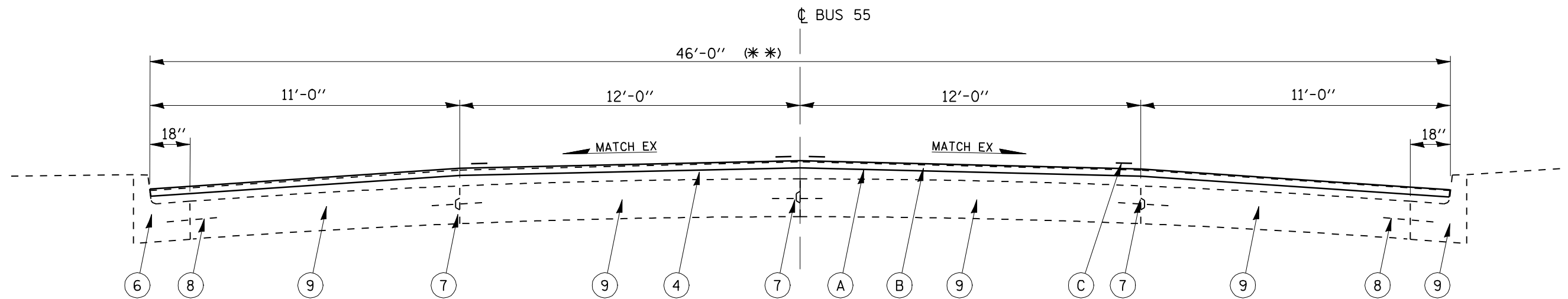
SUMMARY OF QUANTITIES				URBAN	
				100% STATE	
				CONSTRUCTION TYPE CODE	
CODE NO.	PAY ITEM	UNIT	TOTAL QUANTITIES	I000-2A	
70300230	TEMPORARY PAVEMENT MARKING - LINE 5"	FOOT	13,240	13,240	
70300240	TEMPORARY PAVEMENT MARKING - LINE 6"	FOOT	413	413	
70300260	TEMPORARY PAVEMENT MARKING - LINE 12"	FOOT	201	201	
70300280	TEMPORARY PAVEMENT MARKING - LINE 24"	FOOT	33	33	
70301000	WORK ZONE PAVEMENT MARKING REMOVAL	SQ FT	644	644	
* 78000300	THERMOPLASTIC PAVEMENT MARKING - LINE 5"	FOOT	11,040	11,040	
* 78000600	THERMOPLASTIC PAVEMENT MARKING - LINE 12"	FOOT	201	201	
* 78004200	PREFORMED PLASTIC PAVEMENT MARKING, TYPE B - INLAID - LETTERS AND SYMBOLS	SQ FT	35.2	35.2	
* 78004220	PREFORMED PLASTIC PAVEMENT MARKING, TYPE B - INLAID - LINE 5"	FOOT	2,200	2,200	
* 78004230	PREFORMED PLASTIC PAVEMENT MARKING, TYPE B - INLAID - LINE 6"	FOOT	413	413	
* 78004280	PREFORMED PLASTIC PAVEMENT MARKING, TYPE B - INLAID - LINE 24"	FOOT	33	33	
* 78100100	RAISED REFLECTIVE PAVEMENT MARKER	EACH	270	270	
	78300200	RAISED REFLECTIVE PAVEMENT MARKER REMOVAL	EACH	270	270
* 88600100	DETECTOR LOOP, TYPE I	FOOT	602	602	
Z0048665	RAILROAD PROTECTIVE LIABILITY INSURANCE	L SUM	1	1	

* SPECIALTY ITEM



(*)- TAPERS ±7'-0" TO 0'-0"
STA. 91+24.36 TO 91+73.90

STA. 87+13.29 TO STA. 91+24.36



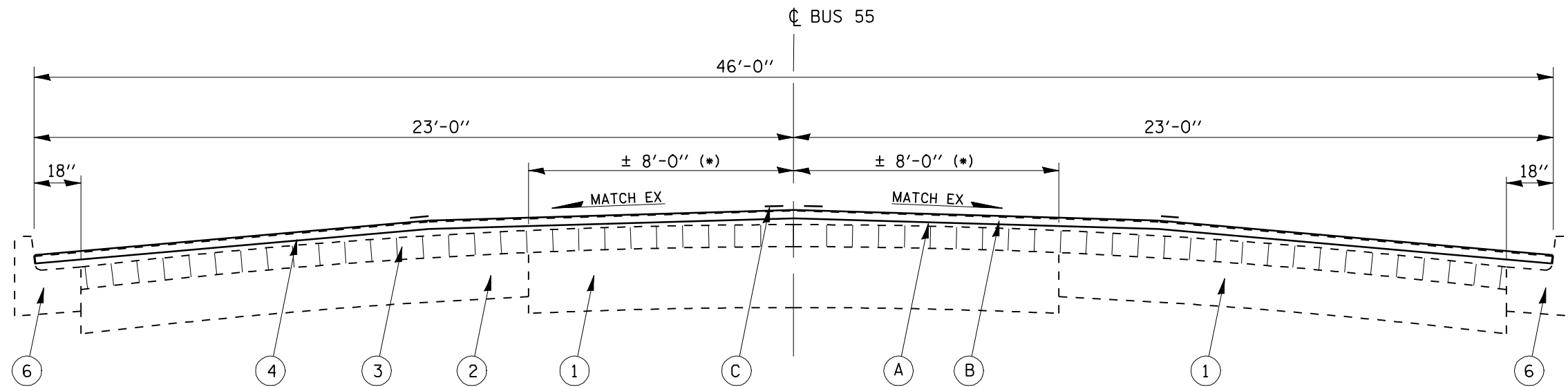
(* *)- TAPERS 53'-0" TO 46'-0"
STA. 91+24.36 TO 91+73.90

STA. 91+24.36 TO 99+00.00

NOTE:
PROPOSED PAVEMENT MARKING IS
SHOWN ON THE PLAN SHEETS

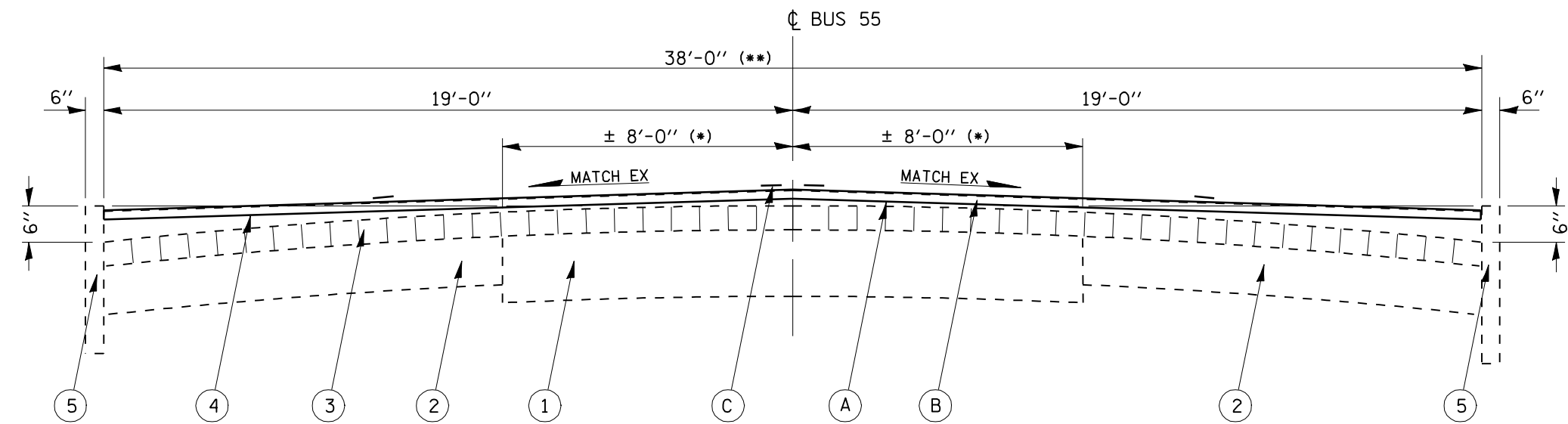
LEGEND

- | | | | |
|---|---|----|--|
| 1 | EXISTING CONCRETE BASE COURSE FOR TROLLEY CAR RAIL BED, DEPTH UNKNOWN | 8 | EXISTING 1/2"Ø DEFORMED BAR, 2' LENGTHS @ 2'-6" CTRS |
| 2 | EXISTING CONCRETE BASE COURSE FOR BRICK FOUNDATION, DEPTH UNKNOWN | 9 | EXISTING P.C.C. PAVEMENT, 8", WITH STD. #1810 OR STD. 1820 PAVEMENT FABRIC |
| 3 | EXISTING BRICK PAVEMENT | 10 | EXISTING COMBINATION CONCRETE CURB AND GUTTER, B-6.24 |
| 4 | EXISTING BITUMINOUS CONCRETE SURFACE | 11 | EXISTING PCC BASE COURSE, 9" |
| 5 | EXISTING CONCRETE CURBING | A | PROPOSED HOT-MIX ASPHALT SURFACE REMOVAL - 1 1/2" |
| 6 | EXISTING COMBINATION CONCRETE CURB & GUTTER | B | PROPOSED HOT-MIX ASPHALT SURFACE COURSE, MIX "D", N50 (1 1/2" DEPTH) |
| 7 | EXISTING LONGITUDINAL METAL JOINT WITH 1/2"Ø DEFORMED BARS, 2' LENGTHS @ 2'-6" CTRS | C | PROPOSED THERMOPLASTIC PAVEMENT MARKING - LINE 5" |



STA. 99+00.00 TO STA. 103+29.60

(*) - DISTANCE WAS SCALED FROM
SPRINGFIELD CITY PLANS,
SECTION 26 CS, 1940



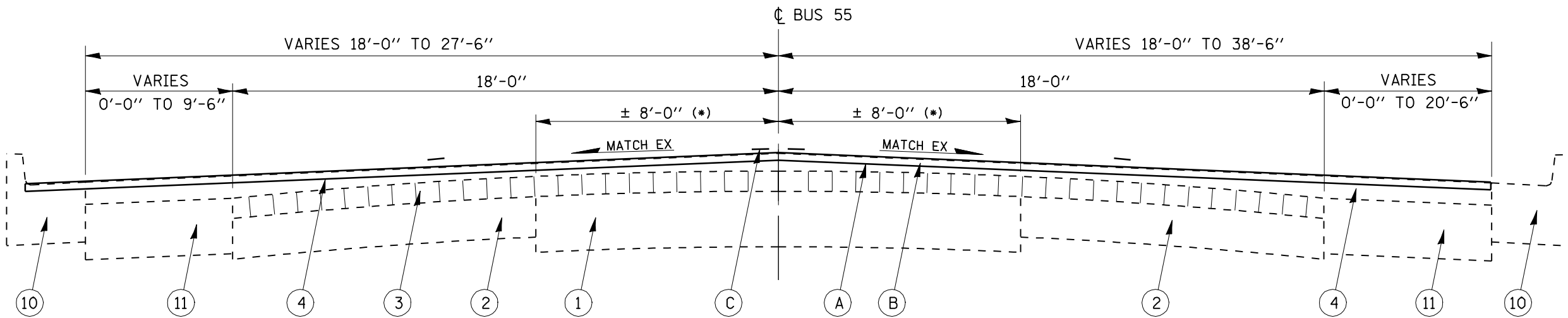
STA. 103+29.60 TO STA. 132+49.80

(*)- DISTANCE WAS SCALED FROM
SPRINGFIELD CITY PLANS,
SECTION 26 CS, 1940
(**)- TAPERS 46'-0" TO 38'-0"
STA. 103+29.60 TO STA. 104+59.39

LEGEND

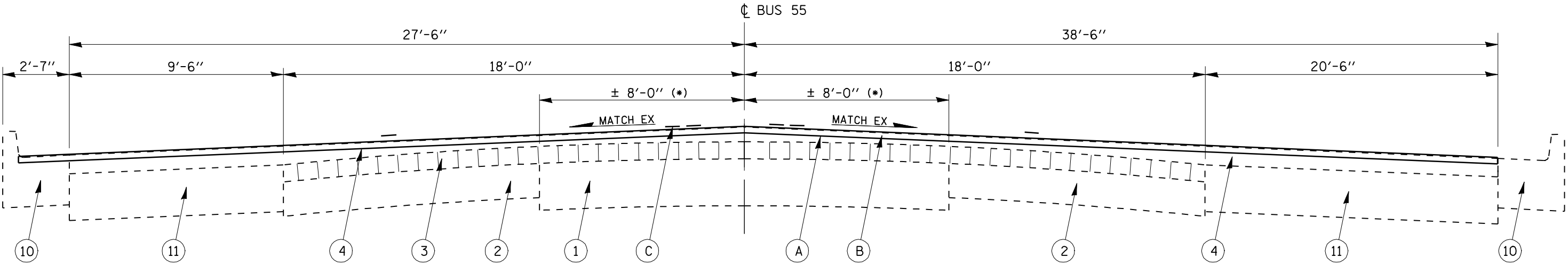
- | | | | |
|---|---|----|--|
| 1 | EXISTING CONCRETE BASE COURSE FOR TROLLEY CAR RAIL BED, DEPTH UNKNOWN | 8 | EXISTING 1/2"Ø DEFORMED BAR, 2' LENGTHS @ 2'-6" CTRS |
| 2 | EXISTING CONCRETE BASE COURSE FOR BRICK FOUNDATION, DEPTH UNKNOWN | 9 | EXISTING P.C.C. PAVEMENT, 8", WITH STD. #1810 OR STD. 1820 PAVEMENT FABRIC |
| 3 | EXISTING BRICK PAVEMENT | 10 | EXISTING COMBINATION CONCRETE CURB AND GUTTER, B-6.24 |
| 4 | EXISTING BITUMINOUS CONCRETE SURFACE | 11 | EXISTING PCC BASE COURSE, 9" |
| 5 | EXISTING CONCRETE CURBING | A | PROPOSED HOT-MIX ASPHALT SURFACE REMOVAL - 1 1/2" |
| 6 | EXISTING COMBINATION CONCRETE CURB & GUTTER | B | PROPOSED HOT-MIX ASPHALT SURFACE COURSE, MIX "D", N50 (1 1/2" DEPTH) |
| 7 | EXISTING LONGITUDINAL METAL JOINT WITH 1/2"Ø DEFORMED BARS, 2' LENGTHS @ 2'-6" CTRS | C | PROPOSED THERMOPLASTIC PAVEMENT MARKING - LINE 5" |

NOTE:
PROPOSED PAVEMENT MARKING IS SHOWN ON THE PLAN SHEETS



STA. 132+49.80 TO STA. 134+33.38

(*)- DISTANCE WAS SCALED FROM
SPRINGFIELD CITY PLANS,
SECTION 26 CS, 1940



STA. 134+33.38 TO STA. 135+41.72

(*)- DISTANCE WAS SCALED FROM
SPRINGFIELD CITY PLANS,
SECTION 26 CS, 1940

NOTE:
PROPOSED PAVEMENT MARKING IS
SHOWN ON THE PLAN SHEETS

LEGEND

- | | | | |
|---|---|----|--|
| 1 | EXISTING CONCRETE BASE COURSE FOR TROLLEY CAR RAIL BED, DEPTH UNKNOWN | 8 | EXISTING 1/2"Ø DEFORMED BAR, 2' LENGTHS @ 2'-6" CTRS |
| 2 | EXISTING CONCRETE BASE COURSE FOR BRICK FOUNDATION, DEPTH UNKNOWN | 9 | EXISTING P.C.C. PAVEMENT, 8", WITH STD. #1810 OR STD. 1820 PAVEMENT FABRIC |
| 3 | EXISTING BRICK PAVEMENT | 10 | EXISTING COMBINATION CONCRETE CURB AND GUTTER, B-6.24 |
| 4 | EXISTING BITUMINOUS CONCRETE SURFACE | 11 | EXISTING PCC BASE COURSE, 9" |
| 5 | EXISTING CONCRETE CURBING | A | PROPOSED HOT-MIX ASPHALT SURFACE REMOVAL - 1 1/2" |
| 6 | EXISTING COMBINATION CONCRETE CURB & GUTTER | B | PROPOSED HOT-MIX ASPHALT SURFACE COURSE, MIX "D", N50 (1 1/2" DEPTH) |
| 7 | EXISTING LONGITUDINAL METAL JOINT WITH 1/2"Ø DEFORMED BARS, 2' LENGTHS @ 2'-6" CTRS | C | PROPOSED THERMOPLASTIC PAVEMENT MARKING - LINE 5" |

PAVING SCHEDULE							
LOCATION	PAVEMENT WIDTH (FOOT)	HMA SURF REM 1 1/2" (SQ YD)	HMA SURF REM BT JT (SQ YD)	BIT MATL PR CT (TON)	AGG PR CT (TON)	SURFACE N50 (TON)	INCIDENTAL HMA SURF (TON)
BL-55 MAINLINE							
STA 87+13.29 TO STA 87+80.89	64	480.71		0.18	0.96	40.38	
STA 87+80.89 TO STA 91+24.36	53	2,022.66		0.77	4.05	169.90	
STA 91+24.36 TO STA 91+73.90	53 TO 46	272.47		0.10	0.54	22.89	
STA 91+73.90 TO STA 103+29.64	46	5,907.12		2.24	11.81	496.20	
STA 103+29.64 TO STA 104+59.39	46 TO 38	605.50		0.23	1.21	50.86	
STA 104+59.39 TO STA 132+83.08	38	11,922.25		4.53	23.84	1,001.47	
STA 132+83.08 TO STA 134+33.38	38 TO 68	885.10		0.34	1.77	74.35	
STA 134+33.38 TO STA 135+41.72	68	818.57		0.31	1.64	68.76	
SIDE STREETS							
BLACK (LT)			37.39	0.01	0.07		3.14
BLACK (RT)			35.26	0.01	0.07		2.96
PEORIA RD (LT)			52.85	0.02	0.11		4.44
RIDGELY (LT)			57.24	0.02	0.11		4.81
RIDGELY (RT)			64.39	0.02	0.13		5.41
WOOD / 10TH (LT)			108.23	0.04	0.22		9.09
GARFIELD / ELIZABETH (LT)			110.69	0.04	0.22		9.30
GRIFFITHS / 11TH (LT)			120.69	0.05	0.24		10.14
PERCY (LT)			35.88	0.01	0.07		3.01
JOLES (LT)			40.37	0.02	0.08		3.39
TOTALS		22,914	663	8.9	47	1,925	56

TEMPORARY RAMPS		
LOCATION	PAVEMENT WIDTH (FOOT)	(SQ YD)
BL-55 MAINLINE		
STA 87+13.29 TO STA 87+18.29	64	35.56
STA 135+36.72 TO STA 135+41.72	68	37.78
SIDE STREETS		
CONVERSE (LT)	52	28.89
CONVERSE (RT)	52	28.89
BLACK (LT)	32	17.78
BLACK (RT)	30	16.67
PEORIA RD (LT)	41	22.78
RIDGELY (LT)	48	26.67
RIDGELY (RT)	52	28.89
WOOD / 10TH (LT)	96	53.33
GARFIELD / ELIZABETH (LT)	98	54.44
GRIFFITHS / 11TH (LT)	93	51.67
PERCY (LT)	29	16.11
JOLES (LT)	31	17.22
TOTALS		437

CCC&G REMOVAL AND REPLACEMENT		
LOCATION		FOOT
BUSINESS 55		
CONVERSE AVE TO RR VIADUCT		
NB STA 87+37 TO STA 93+83		196
SB STA 87+37 TO STA 93+83		189
RR VIADUCT TO BLACK AVE		
NB STA 93+83 TO STA 99+56		108
SB STA 93+83 TO STA 99+56		108
BLACK AVE TO N PEORIA RD		
NB STA 99+56 TO STA 101+77		7
SB STA 99+56 TO STA 101+77		0
TOTAL		608

FRAMES AND LIDS TO BE ADJUSTED	
LOCATION	EACH
BUSINESS 55	
JOBSITE	14
TOTAL	14

SIDEWALK RAMPS	SIDEWALK REMOVAL SQ FT	DRIVEWAY PAVEMENT REMOVAL SQ YD	CCC&G REMOVAL & REPLACEMENT FOOT	PCC SIDEWALK 4 INCH SQ FT	DETECTABLE WARNINGS SQ FT
BUSINESS 55					
RT STA 102+48. TO STA 102+63.24	39.9	1.0		39.9	8.0
RT STA 102+78. TO STA 102+86.70	31.0	1.0		31.0	8.0
RT STA 103+20. TO STA 103+33.95	44.2	1.0		44.2	8.0
RT STA 103+70. TO STA 103+83.91	44.0	1.0		44.0	8.0
LT STA 104+24.5 TO STA 104+33.05	28.3		7.0	35.5	8.0
RT STA 105+27.7 TO STA 105+39.70	60.0		10.0	60.0	8.0
TOTAL	247	4	17	255	48

PAVEMENT PATCHING			
LOCATION	TYPE II SQ YD	TYPE III SQ YD	TYPE IV SQ YD
BUSINESS 55			
BLACK AVE TO RIDGLEY AVE			
NB STA 99+56 TO STA 104+81	0.0	0.0	0.0
SB STA 99+56 TO STA 104+81	0.0	0.0	81.0
RIDGLEY AVE TO GARFIELD ST			
NB STA 104+81 TO STA 114+00	13.5	22.5	112.5
SB STA 104+81 TO STA 114+00	0.0	0.0	72.0
GARFIELD ST TO GRIFFITHS ST			
NB STA 114+00 TO STA 120+84	0.0	60.0	36.0
SB STA 114+00 TO STA 120+84	0.0	60.0	0.0
GRIFFITHS TO PERCY ST			
NB STA 120+84 TO STA 129+50	0.0	27.0	0.0
SB STA 120+84 TO STA 129+50	0.0	30.0	90.0
PERCY ST TO SANGAMON AVE			
NB STA 129+50 TO STA 135+41	15.0	22.5	0.0
SB STA 129+50 TO STA 135+41	15.0	0.0	135.0
TOTALS	44	222	527

THERMOPLASTIC PAVEMENT MARKING - LINE 5"					
LOCATION	COLOR / DESCRIPTIO	DIRECTION	* OF LINES	LENGTH (FOOT)	
BL-55 MAINLINE					
STA 87+80 TO STA 88+58	YELLOW / SOLID	CENTERLINE	2	156.0	
STA 88+58 TO STA 89+35	YELLOW / SOLID	CENTERLINE	4	308.0	
STA 89+35 TO STA 90+79	YELLOW / SOLID	CENTERLINE	2	288.0	
STA 89+35 TO STA 90+79	YELLOW / SKIP DASH	CENTERLINE	2	80.0	
STA 90+79 TO STA 99+32	YELLOW / SOLID	CENTERLINE	4	3,412.0	
STA 99+77 TO STA 104+3	YELLOW / SOLID	CENTERLINE	2	914.0	
STA 105+0 TO STA 109+1	YELLOW / SOLID	CENTERLINE	2	818.0	
STA 109+6 TO STA 113+4	YELLOW / SOLID	CENTERLINE	2	744.0	
STA 114+2 TO STA 119+2	YELLOW / SOLID	CENTERLINE	2	994.0	
STA 120+1 TO STA 129+1	YELLOW / SOLID	CENTERLINE	2	1,802.0	
STA 129+6 TO STA 131+8	YELLOW / SOLID	CENTERLINE	2	434.0	
STA 132+3 TO STA 133+0	YELLOW / SOLID	CENTERLINE	2	130.0	
STA 133+0 TO STA 135+4	YELLOW / SOLID	CENTERLINE	4	960.0	
TOTAL				11,040	

THERMOPLASTIC PAVEMENT MARKING - LINE 12"				
LOCATION	DESCRIPTION	COLOR	LENGTH (FOOT)	
BL-55 MAINLINE				
STA 91+70 TO STA 93+3	DIAGONALS	YELLOW	32.0	
STA 94+30 TO STA 99+3	DIAGONALS	YELLOW	104.0	
STA 132+0 TO STA 135+4	DIAGONALS	YELLOW	65.0	
TOTAL			201	

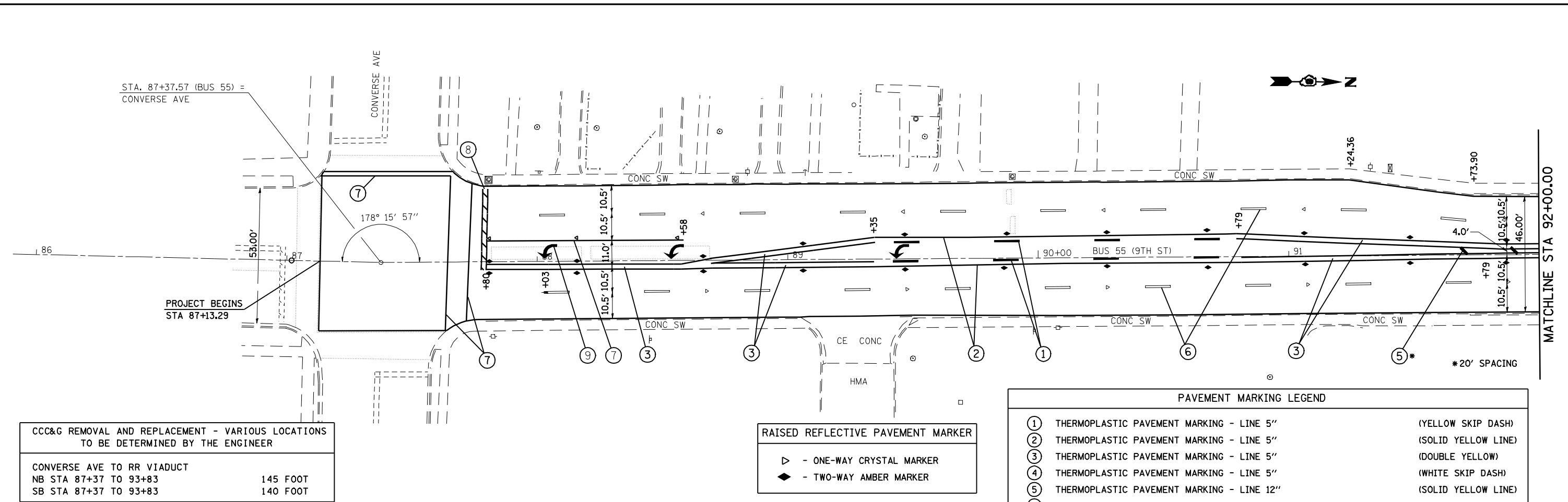
PERFORMED PLASTIC PAVEMENT MARKING, TYPE B - INLAID - LINE 5"					
LOCATION	COLOR / DESCRIPTIO	DIRECTION	* OF LINES	LENGTH (FOOT)	
BL-55 MAINLINE					
STA 87+80 TO STA 99+32	WHITE / SKIP DASH	NB, SB	2	580.0	
STA 99+77 TO STA 104+34	WHITE / SKIP DASH	NB, SB	2	220.0	
STA 105+08 TO STA 119+26	WHITE / SKIP DASH	NB	1	350.0	
STA 105+08 TO STA 109+17	WHITE / SKIP DASH	SB	1	100.0	
STA 109+69 TO STA 113+41	WHITE / SKIP DASH	SB	1	90.0	
STA 114+29 TO STA 119+26	WHITE / SKIP DASH	SB	1	120.0	
STA 120+15 TO STA 135+42	WHITE / SKIP DASH	NB	1	380.0	
STA 120+15 TO STA 129+16	WHITE / SKIP DASH	SB	1	230.0	
STA 129+67 TO STA 131+84	WHITE / SKIP DASH	SB	1	50.0	
STA 132+37 TO STA 135+42	WHITE / SKIP DASH	SB	1	80.0	
TOTAL				2,200	

PERFORMED PLASTIC PAVEMENT MARKING, TYPE B - INLAID - LINE 6"			
LOCATION	COLOR	DESCRIPTION	LENGTH (FOOT)
BL-55 MAINLINE			
STA 87+64	WHITE	CROSSWALK	62.4
STA 87+72	WHITE	CROSSWALK	55.1
STA 87+80 TO STA 88+58	WHITE	LANE LINE	78.0
STA 132+95 TO STA 134+33	WHITE	DOTTED TAPER	32.0
STA 134+33 TO STA 135+42	WHITE	LANE LINE	109.0
STA 134+32 TO STA 135+41	WHITE	DOTTED TAPER	24.0
CONVERSE ST WEST SIDE	WHITE	CROSSWALK	52.0
TOTAL			413

PERFORMED PLASTIC PAVEMENT MARKING, TYPE B - INLAID - LINE 24"			
LOCATION	DIRECTION	DESCRIPTION (FOOT)	LENGTH
BL-55 MAINLINE			
STA 37+58	SB	STOP BAR	32.5
TOTAL			33

PERFORMED PLASTIC PAVEMENT MARKING, TYPE B, LETTERS AND SYMBOLS		
LOCATION	SYMBOL TYPE	SQ FT
BL-55 MAINLINE		
STA 88+05	LEFT TURN	8.8
STA 88+55	LEFT TURN	8.8
STA 89+45	LEFT TURN	8.8
STA 134+35	RIGHT TURN	8.8
TOTAL		35.2

RAISED REFLECTIVE PAVEMENT MARKER										
LOCATION	DESCRIPTION	DIRECTION	COLOR	* OF LINES	* OF REFLECTORS PER SPACING	QUANTITY				
BL-55 MAINLINE										
STA 87+80 TO STA 99+32	SKIP DASHES	NB & SB	CRYSTAL	2	1	PER 80	30			
STA 99+77 TO STA 104+34	SKIP DASHES	NB & SB	CRYSTAL	2	1	PER 80	12			
STA 105+08 TO STA 119+26	SKIP DASHES	NB	CRYSTAL	1	1	PER 80	18			
STA 105+08 TO STA 109+17	SKIP DASHES	SB	CRYSTAL	1	1	PER 80	6			
STA 109+69 TO STA 113+41	SKIP DASHES	SB	CRYSTAL	1	1	PER 80	5			
STA 114+29 TO STA 119+26	SKIP DASHES	SB	CRYSTAL	1	1	PER 80	7			
STA 120+15 TO STA 135+42	SKIP DASHES	NB	CRYSTAL	1	1	PER 80	20			
STA 120+15 TO STA 129+16	SKIP DASHES	SB	CRYSTAL	1	1	PER 80	12			
STA 129+67 TO STA 131+84	SKIP DASHES	SB	CRYSTAL	1	1	PER 80	3			
STA 132+37 TO STA 135+42	SKIP DASHES	SB	CRYSTAL	1	1	PER 80	4			
STA 87+80 TO STA 99+32	CENTERLINE		AMBER	2	1	PER 40	58			
STA 99+77 TO STA 104+34	CENTERLINE		AMBER	1	1	PER 40	12			
STA 105+08 TO STA 109+17	CENTERLINE		AMBER	1	1	PER 40	11			
STA 109+69 TO STA 113+41	CENTERLINE		AMBER	1	1	PER 40	10			
STA 114+29 TO STA 119+26	CENTERLINE		AMBER	1	1	PER 40	13			
STA 120+15 TO STA 129+16	CENTERLINE		AMBER	1	1	PER 40	23			
STA 129+67 TO STA 131+84	CENTERLINE		AMBER	1	1	PER 40	6			
STA 132+37 TO STA 133+02	CENTERLINE		AMBER	1	1	PER 40	2			
STA 133+02 TO STA 135+42	CENTERLINE		AMBER	2	1	PER 40	12			
STA 87+80 TO STA 88+58	LT TURN LANE	SB	CRYSTAL	1	1	PER	3			
STA 134+33 TO STA 135+42	RT TURN LANE	NB	CRYSTAL	1	1	PER 40	3			
TOTALS							270			



CCC&G REMOVAL AND REPLACEMENT - VARIOUS LOCATIONS TO BE DETERMINED BY THE ENGINEER

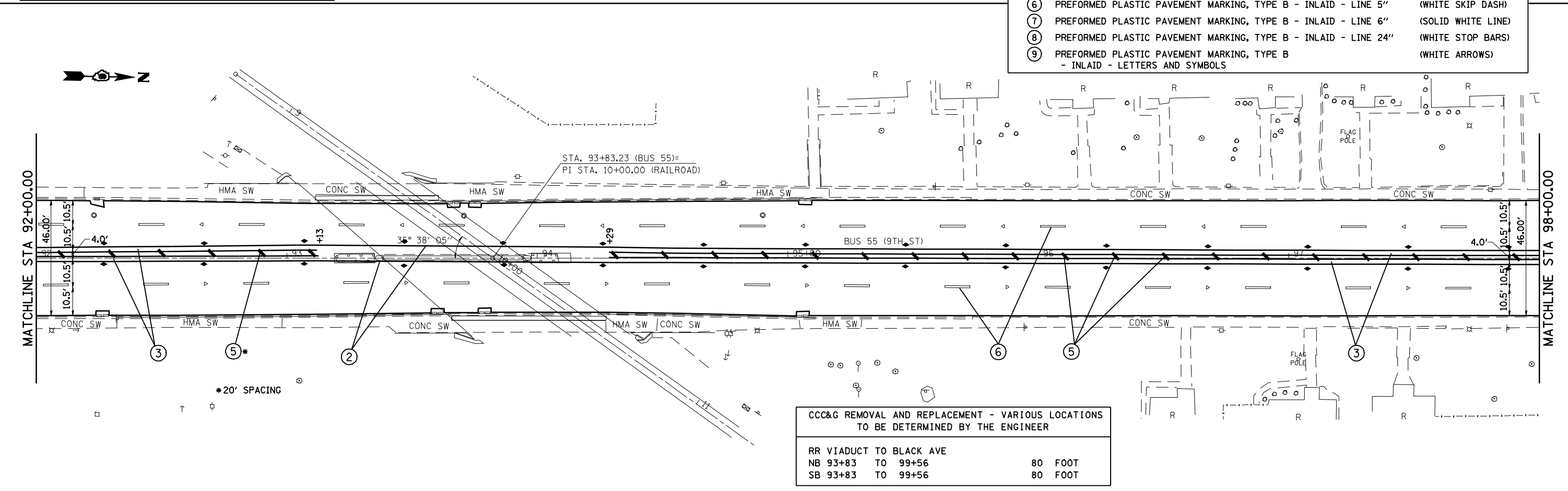
CONVERSE AVE TO RR VIADUCT	
NB STA 87+37 TO 93+83	145 FOOT
SB STA 87+37 TO 93+83	140 FOOT

RAISED REFLECTIVE PAVEMENT MARKER

- ▷ - ONE-WAY CRYSTAL MARKER
- ◄ - TWO-WAY AMBER MARKER

PAVEMENT MARKING LEGEND

①	THERMOPLASTIC PAVEMENT MARKING - LINE 5"	(YELLOW SKIP DASH)
②	THERMOPLASTIC PAVEMENT MARKING - LINE 5"	(SOLID YELLOW LINE)
③	THERMOPLASTIC PAVEMENT MARKING - LINE 5"	(DOUBLE YELLOW)
④	THERMOPLASTIC PAVEMENT MARKING - LINE 5"	(WHITE SKIP DASH)
⑤	THERMOPLASTIC PAVEMENT MARKING - LINE 12"	(SOLID YELLOW LINE)
⑥	PREFORMED PLASTIC PAVEMENT MARKING, TYPE B - INLAID - LINE 5"	(WHITE SKIP DASH)
⑦	PREFORMED PLASTIC PAVEMENT MARKING, TYPE B - INLAID - LINE 6"	(SOLID WHITE LINE)
⑧	PREFORMED PLASTIC PAVEMENT MARKING, TYPE B - INLAID - LINE 24"	(WHITE STOP BARS)
⑨	PREFORMED PLASTIC PAVEMENT MARKING, TYPE B - INLAID - LETTERS AND SYMBOLS	(WHITE ARROWS)



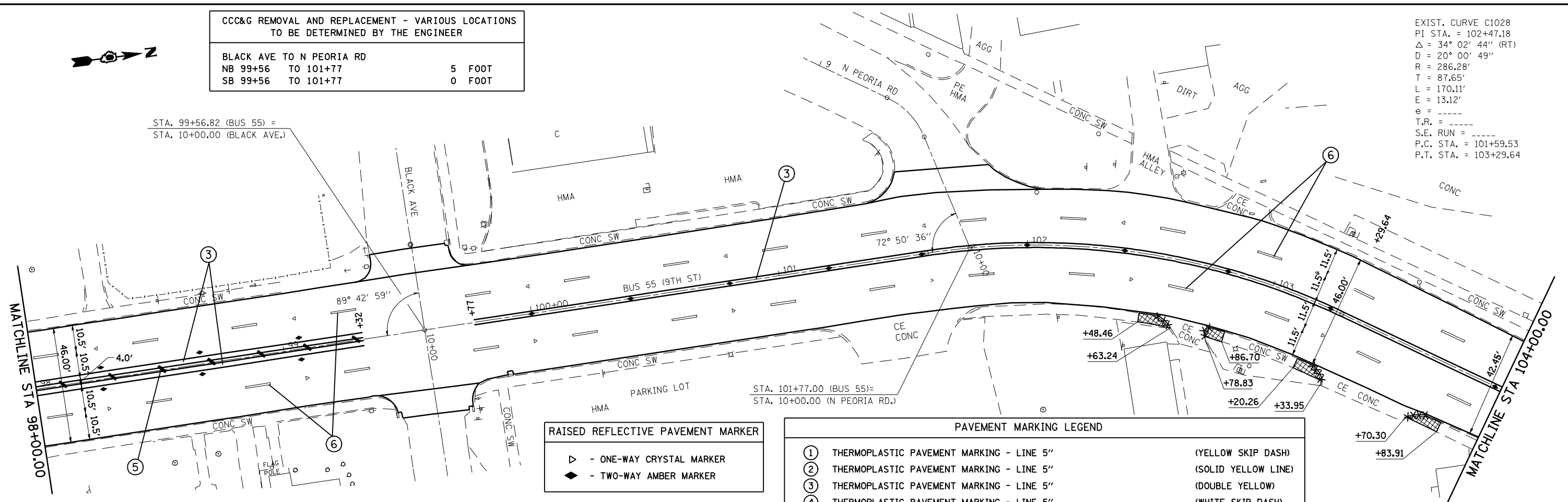
CCC&G REMOVAL AND REPLACEMENT - VARIOUS LOCATIONS TO BE DETERMINED BY THE ENGINEER

RR VIADUCT TO BLACK AVE	
NB 93+83 TO 99+56	80 FOOT
SB 93+83 TO 99+56	80 FOOT

CCC&G REMOVAL AND REPLACEMENT - VARIOUS LOCATIONS
TO BE DETERMINED BY THE ENGINEER

BLACK AVE TO N PEORIA RD	
NB 99+56 TO 101+77	5 FOOT
SB 99+56 TO 101+77	0 FOOT

EXIST. CURVE C1028
 PI STA. = 102+47.18
 $\Delta = 34^\circ 02' 44''$ (RT)
 D = 20° 00' 49"
 R = 286.28'
 T = 87.65'
 L = 170.11'
 E = 13.12'
 e = -----
 T.R. = -----
 S.E. RUN = -----
 P.C. STA. = 101+59.53
 P.T. STA. = 103+29.64

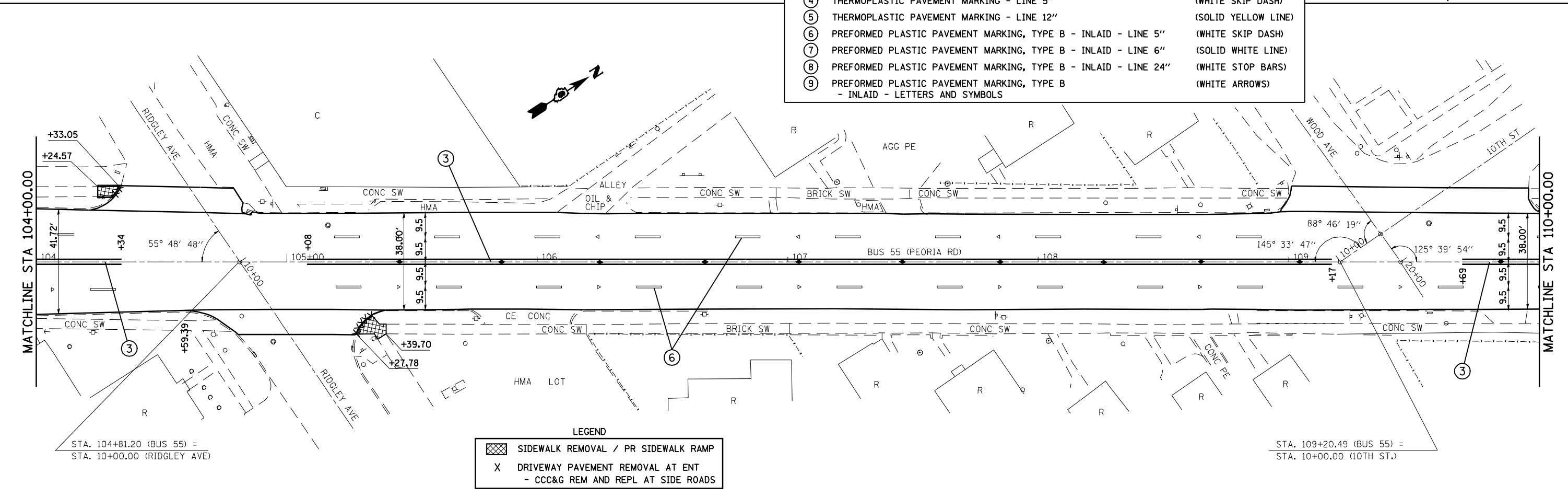


RAISED REFLECTIVE PAVEMENT MARKER

- ▷ - ONE-WAY CRYSTAL MARKER
- ◆ - TWO-WAY AMBER MARKER

PAVEMENT MARKING LEGEND

①	THERMOPLASTIC PAVEMENT MARKING - LINE 5"	(YELLOW SKIP DASH)
②	THERMOPLASTIC PAVEMENT MARKING - LINE 5"	(SOLID YELLOW LINE)
③	THERMOPLASTIC PAVEMENT MARKING - LINE 5"	(DOUBLE YELLOW)
④	THERMOPLASTIC PAVEMENT MARKING - LINE 5"	(WHITE SKIP DASH)
⑤	THERMOPLASTIC PAVEMENT MARKING - LINE 12"	(SOLID YELLOW LINE)
⑥	PREFORMED PLASTIC PAVEMENT MARKING, TYPE B - INLAID - LINE 5"	(WHITE SKIP DASH)
⑦	PREFORMED PLASTIC PAVEMENT MARKING, TYPE B - INLAID - LINE 6"	(SOLID WHITE LINE)
⑧	PREFORMED PLASTIC PAVEMENT MARKING, TYPE B - INLAID - LINE 24"	(WHITE STOP BARS)
⑨	PREFORMED PLASTIC PAVEMENT MARKING, TYPE B - INLAID - LETTERS AND SYMBOLS	(WHITE ARROWS)



LEGEND

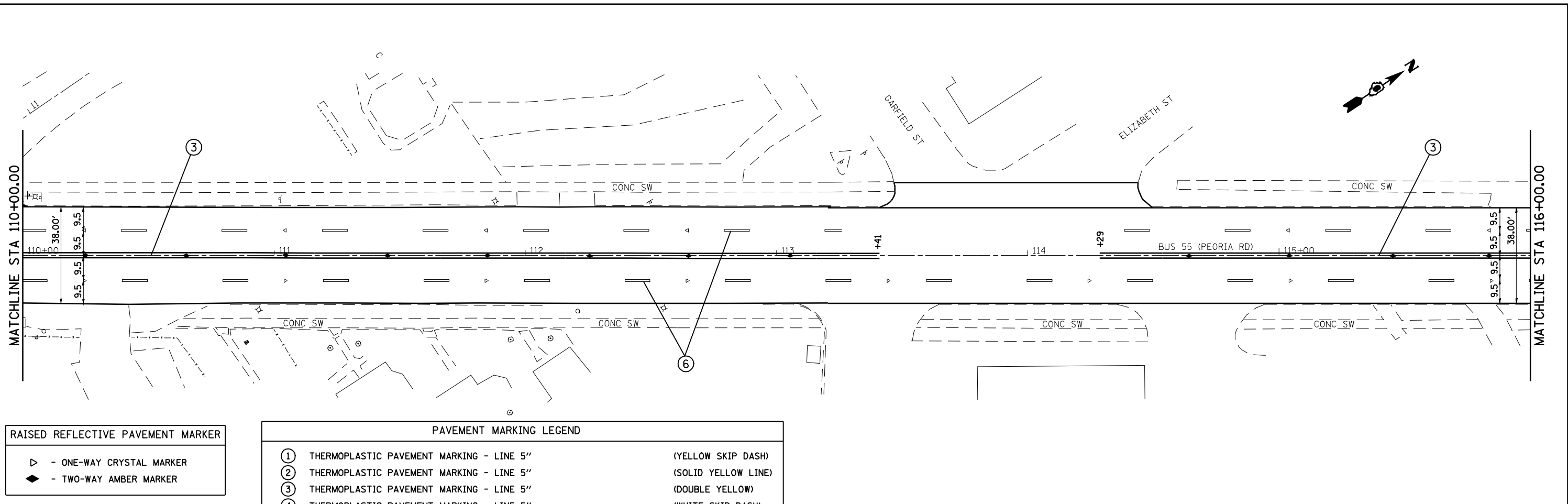
- ▨ SIDEWALK REMOVAL / PR SIDEWALK RAMP
- X DRIVEWAY PAVEMENT REMOVAL AT ENT - CCC&G REM AND REPL AT SIDE ROADS

MATCHLINE STA 110+00.00

MATCHLINE STA 116+00.00

MATCHLINE STA 116+00.00

MATCHLINE STA 122+00.00

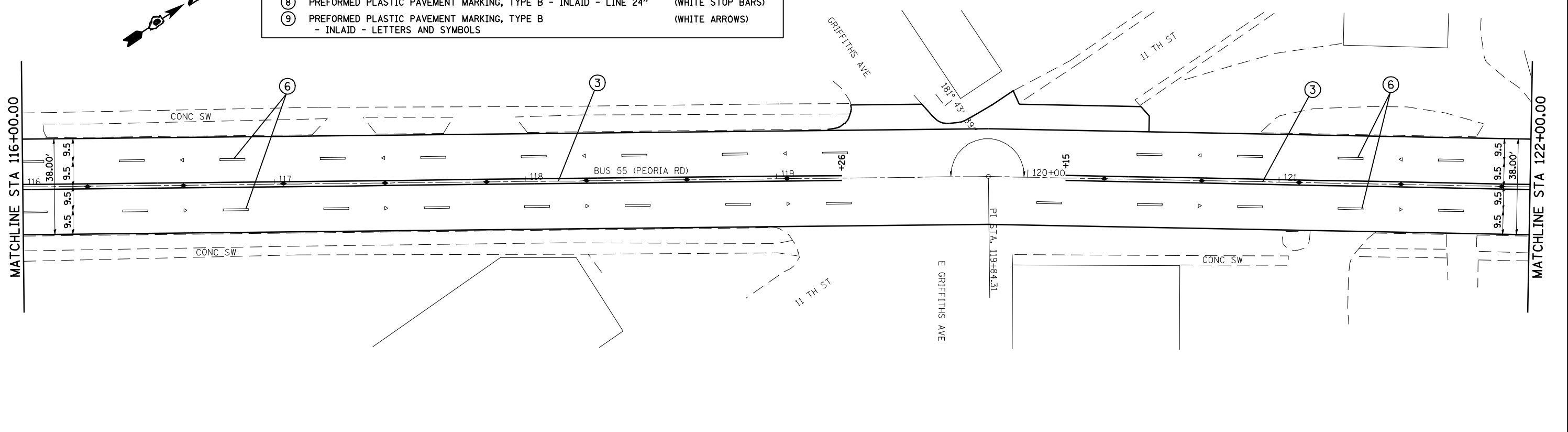


RAISED REFLECTIVE PAVEMENT MARKER

▷	- ONE-WAY CRYSTAL MARKER
◆	- TWO-WAY AMBER MARKER

PAVEMENT MARKING LEGEND

①	THERMOPLASTIC PAVEMENT MARKING - LINE 5"	(YELLOW SKIP DASH)
②	THERMOPLASTIC PAVEMENT MARKING - LINE 5"	(SOLID YELLOW LINE)
③	THERMOPLASTIC PAVEMENT MARKING - LINE 5"	(DOUBLE YELLOW)
④	THERMOPLASTIC PAVEMENT MARKING - LINE 5"	(WHITE SKIP DASH)
⑤	THERMOPLASTIC PAVEMENT MARKING - LINE 12"	(SOLID YELLOW LINE)
⑥	PREFORMED PLASTIC PAVEMENT MARKING, TYPE B - INLAID - LINE 5"	(WHITE SKIP DASH)
⑦	PREFORMED PLASTIC PAVEMENT MARKING, TYPE B - INLAID - LINE 6"	(SOLID WHITE LINE)
⑧	PREFORMED PLASTIC PAVEMENT MARKING, TYPE B - INLAID - LINE 24"	(WHITE STOP BARS)
⑨	PREFORMED PLASTIC PAVEMENT MARKING, TYPE B - INLAID - LETTERS AND SYMBOLS	(WHITE ARROWS)



FILE NAME =	USER NAME = coxte	DESIGNED -	REVISED -
es:\pwork\PID001\COXTE\0144500\072C00\pht-plan1.dgn		DRAWN -	REVISED -
PLOT SCALE = 40.0000' / IN.		CHECKED -	REVISED -
PLOT DATE = Jun-17-2009 10:56:02AM		DATE -	REVISED -

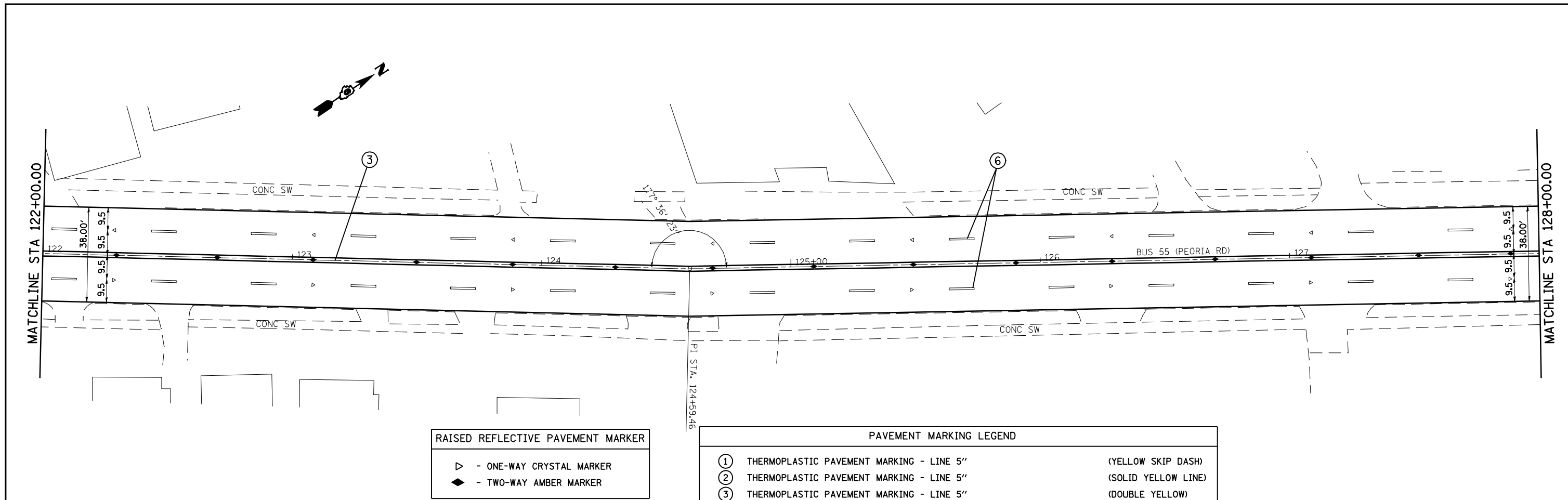
**STATE OF ILLINOIS
DEPARTMENT OF TRANSPORTATION**

**PLAN SHEETS
BUSINESS 55**

SCALE: 1" = 20'

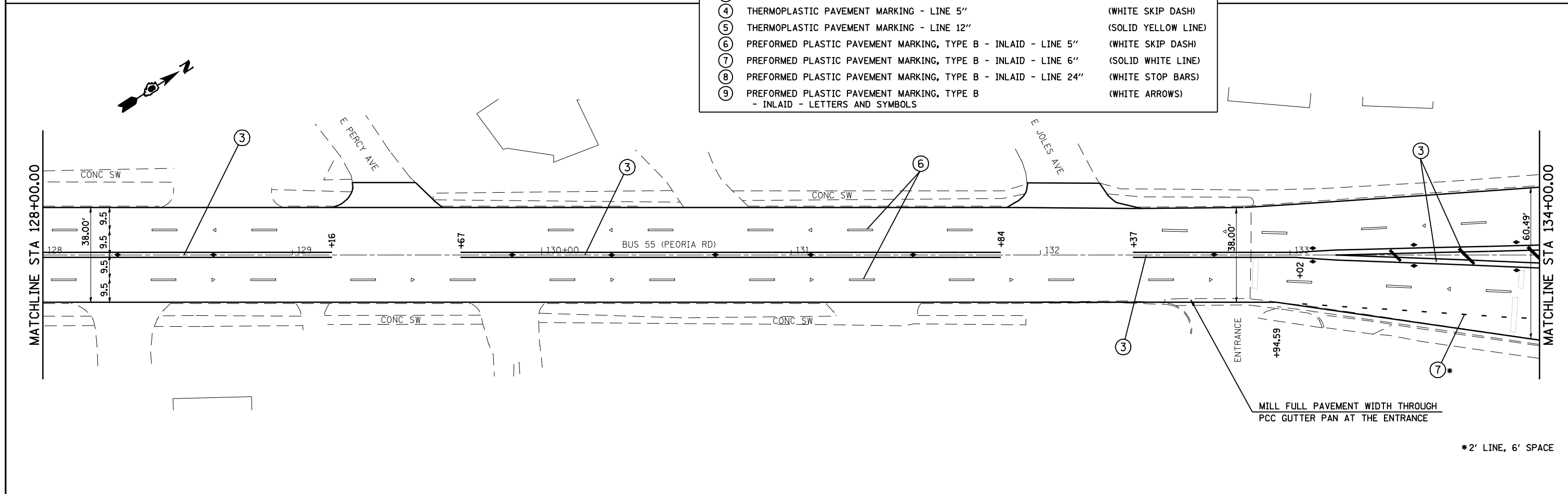
SHEET NO.	OF	SHEETS	STA. 110+00.00 TO STA. 122+00.00
-----------	----	--------	----------------------------------

F.A.P. RTE.	SECTION	COUNTY	TOTAL SHEETS	SHEET NO.
666	SPZ(RS-5),26CS(RS)	SANGAMON	17	12
CONTRACT NO. 72C00				
ILLINOIS FED. AID PROJECT				



RAISED REFLECTIVE PAVEMENT MARKER	
▷	- ONE-WAY CRYSTAL MARKER
◆	- TWO-WAY AMBER MARKER

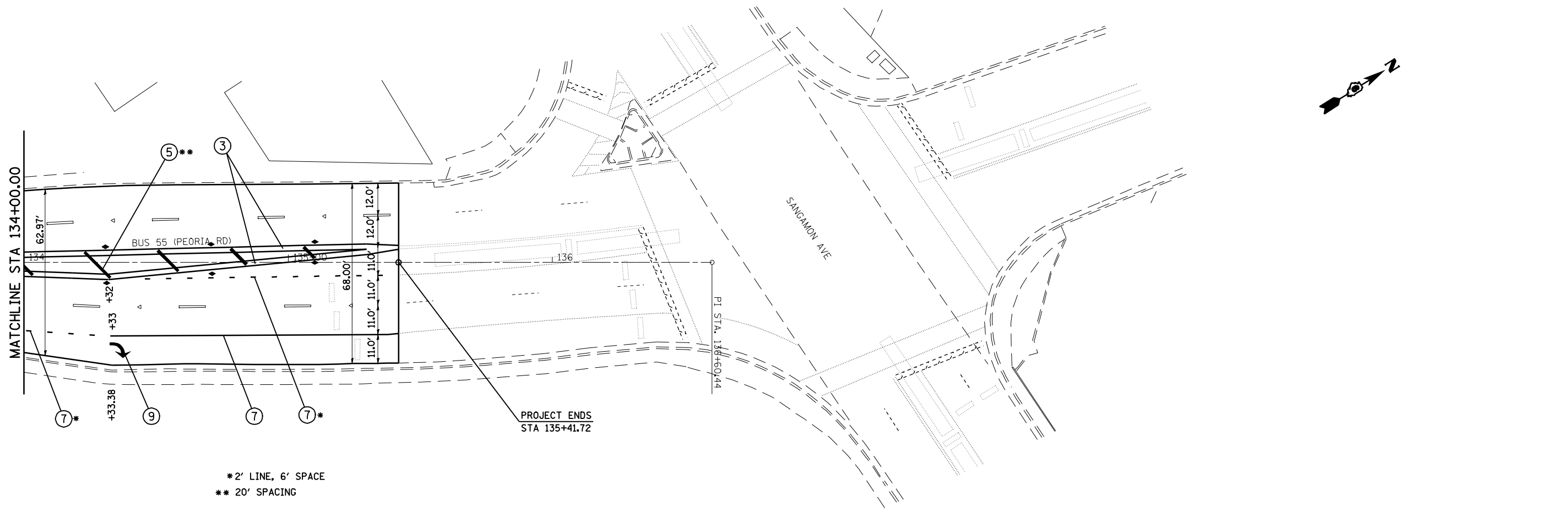
PAVEMENT MARKING LEGEND		
①	THERMOPLASTIC PAVEMENT MARKING - LINE 5"	(YELLOW SKIP DASH)
②	THERMOPLASTIC PAVEMENT MARKING - LINE 5"	(SOLID YELLOW LINE)
③	THERMOPLASTIC PAVEMENT MARKING - LINE 5"	(DOUBLE YELLOW)
④	THERMOPLASTIC PAVEMENT MARKING - LINE 5"	(WHITE SKIP DASH)
⑤	THERMOPLASTIC PAVEMENT MARKING - LINE 12"	(SOLID YELLOW LINE)
⑥	PREFORMED PLASTIC PAVEMENT MARKING, TYPE B - INLAID - LINE 5"	(WHITE SKIP DASH)
⑦	PREFORMED PLASTIC PAVEMENT MARKING, TYPE B - INLAID - LINE 6"	(SOLID WHITE LINE)
⑧	PREFORMED PLASTIC PAVEMENT MARKING, TYPE B - INLAID - LINE 24"	(WHITE STOP BARS)
⑨	PREFORMED PLASTIC PAVEMENT MARKING, TYPE B - INLAID - LETTERS AND SYMBOLS	(WHITE ARROWS)



MILL FULL PAVEMENT WIDTH THROUGH PCC GUTTER PAN AT THE ENTRANCE

*2' LINE, 6' SPACE

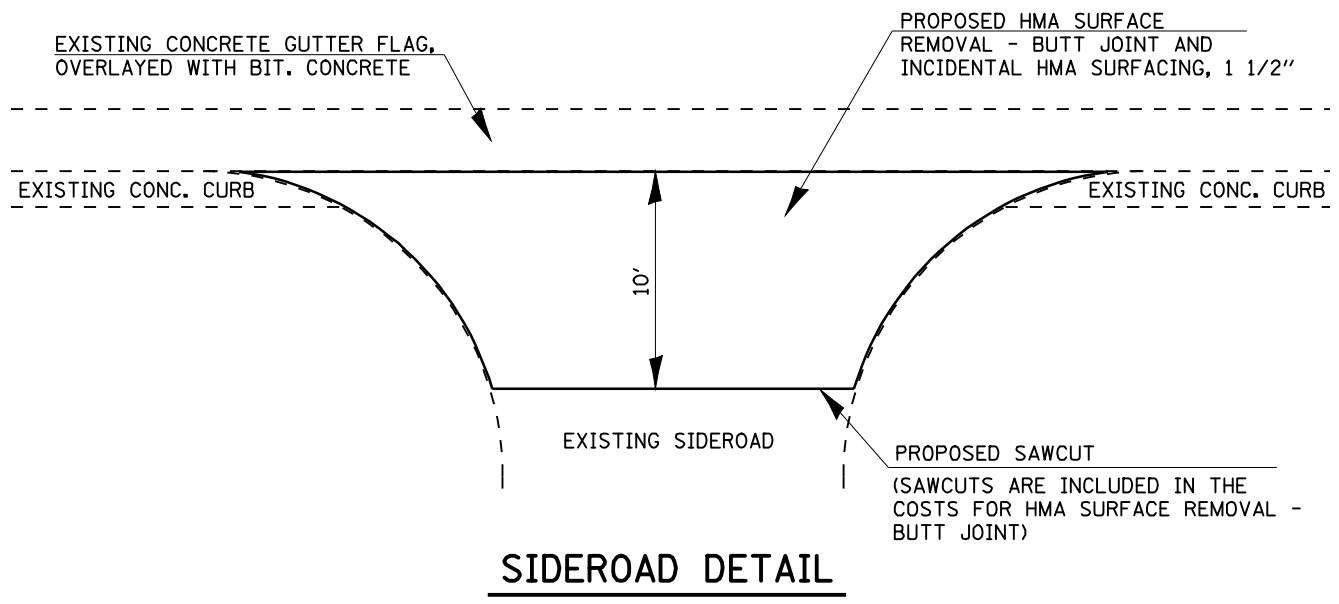
FILE NAME =	USER NAME = coxte	DESIGNED -	REVISED -	STATE OF ILLINOIS DEPARTMENT OF TRANSPORTATION	PLAN SHEETS BUSINESS 55			F.A.P. RTE.	SECTION	COUNTY	TOTAL SHEETS	SHEET NO.			
er:\pwork\PWIDOT\COXTE\0144500\072C00\pht-plan1.dgn		DRAWN -	REVISED -		SCALE: 1" = 20'	SHEET NO.	OF	SHEETS	STA. 122+00.00	TO STA. 134+00.00	666	SPZ(RS-5),26CS(RS)	SANGAMON	17	13
PLOT SCALE = 40.0000' / IN.		CHECKED -	REVISED -												
PLOT DATE = Jun-17-2009 10:56:05AM		DATE -	REVISED -												
												CONTRACT NO. 72C00		ILLINOIS FED. AID PROJECT	



* 2' LINE, 6' SPACE
 ** 20' SPACING

RAISED REFLECTIVE PAVEMENT MARKER	
▷	- ONE-WAY CRYSTAL MARKER
◆	- TWO-WAY AMBER MARKER

PAVEMENT MARKING LEGEND		
①	THERMOPLASTIC PAVEMENT MARKING - LINE 5"	(YELLOW SKIP DASH)
②	THERMOPLASTIC PAVEMENT MARKING - LINE 5"	(SOLID YELLOW LINE)
③	THERMOPLASTIC PAVEMENT MARKING - LINE 5"	(DOUBLE YELLOW)
④	THERMOPLASTIC PAVEMENT MARKING - LINE 5"	(WHITE SKIP DASH)
⑤	THERMOPLASTIC PAVEMENT MARKING - LINE 12"	(SOLID YELLOW LINE)
⑥	PREFORMED PLASTIC PAVEMENT MARKING, TYPE B - INLAID - LINE 5"	(WHITE SKIP DASH)
⑦	PREFORMED PLASTIC PAVEMENT MARKING, TYPE B - INLAID - LINE 6"	(SOLID WHITE LINE)
⑧	PREFORMED PLASTIC PAVEMENT MARKING, TYPE B - INLAID - LINE 24"	(WHITE STOP BARS)
⑨	PREFORMED PLASTIC PAVEMENT MARKING, TYPE B - INLAID - LETTERS AND SYMBOLS	(WHITE ARROWS)



FILE NAME =	USER NAME = coxte	DESIGNED -	REVISED -
es:\pwork\PIWIDOT\COXTE\0144500\072C00\pht-plan1.dgn		DRAWN -	REVISED -
	PLOT SCALE = 40.0000 ' / IN.	CHECKED -	REVISED -
	PLOT DATE = Jun-17-2009 10:56:07AM	DATE -	REVISED -

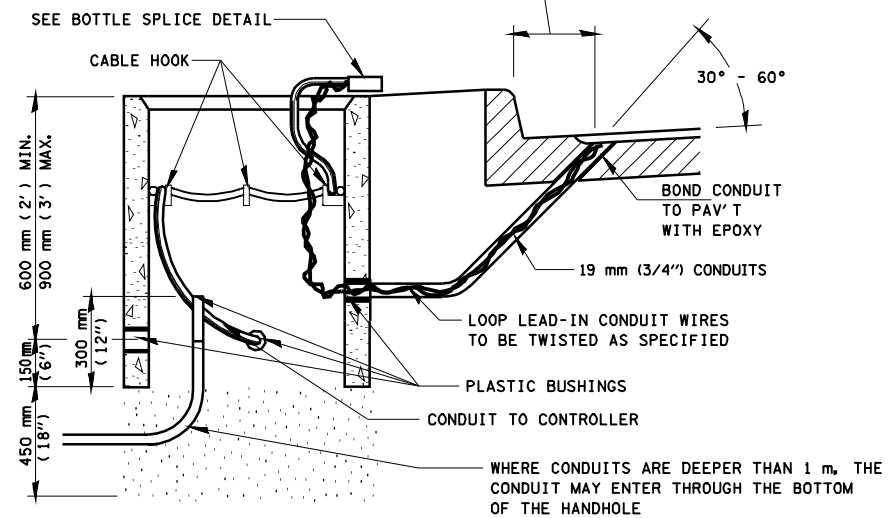
**STATE OF ILLINOIS
 DEPARTMENT OF TRANSPORTATION**

PLAN SHEETS BUSINESS 55			
SCALE: 1" = 20'	SHEET NO.	OF SHEETS	STA. 134+00.00 TO STA. 136+60.44

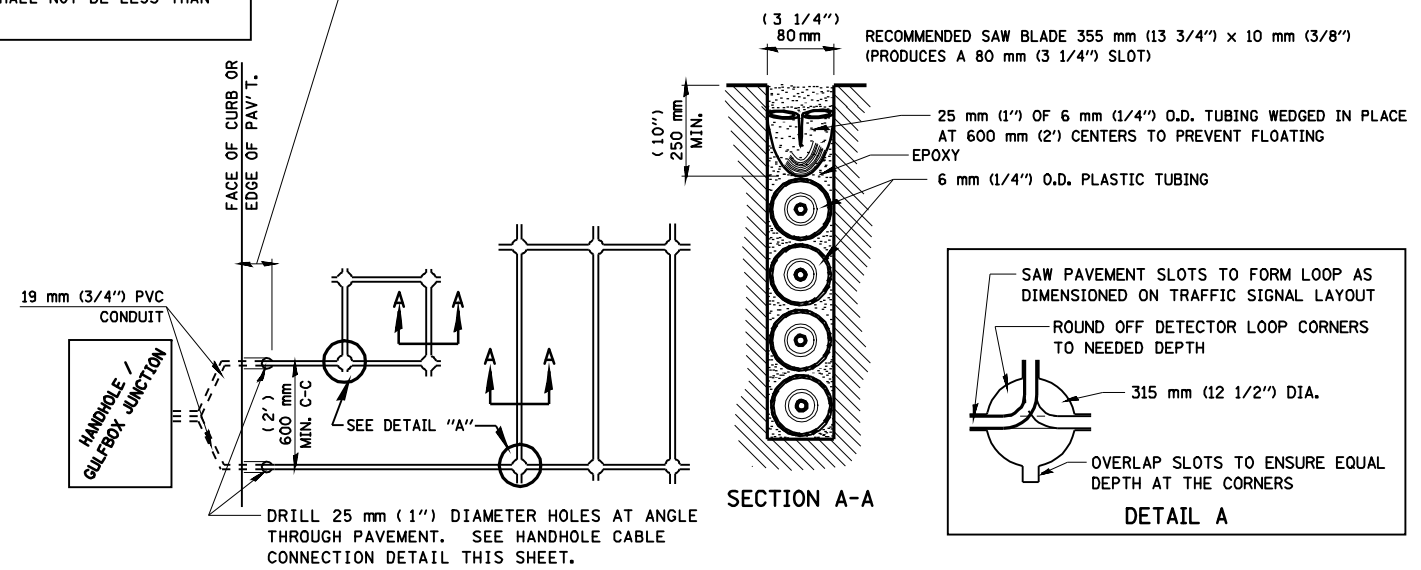
F.A.P. RTE.	SECTION	COUNTY	TOTAL SHEETS	SHEET NO.
666	SPZ(RS-5),26CS(RS)	SANGAMON	17	14
CONTRACT NO. 72C00				
ILLINOIS FED. AID PROJECT				

LENGTH OF SLACK FOR LOOP LEAD-INS SHALL PROVIDE FOR MAKING THE SPLICE ON TOP OF THE HANDHOLE AND ONE COMPLETE LOOP OF THE INTERIOR OF THE HANDHOLE, THE SPLICE SHALL BE SUPPORTED BY A CABLE HOOK.

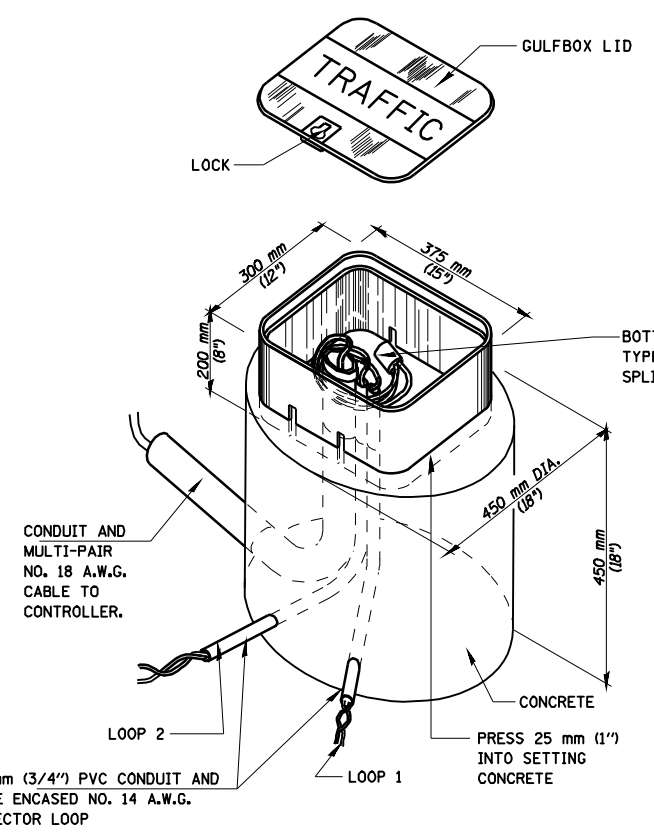
THE LOOP LEAD-IN CONDUIT HOLES SHALL BE PLACED AS CLOSE TO THE CURB AS POSSIBLE TO PERMIT SAW OVERLAP WITHOUT SCARRING FACE OF CURB.
IN NON-CURB LOCATIONS THE DISTANCE SHALL NOT BE LESS THAN 150 mm (6").



HANDHOLE CABLE CONNECTIONS

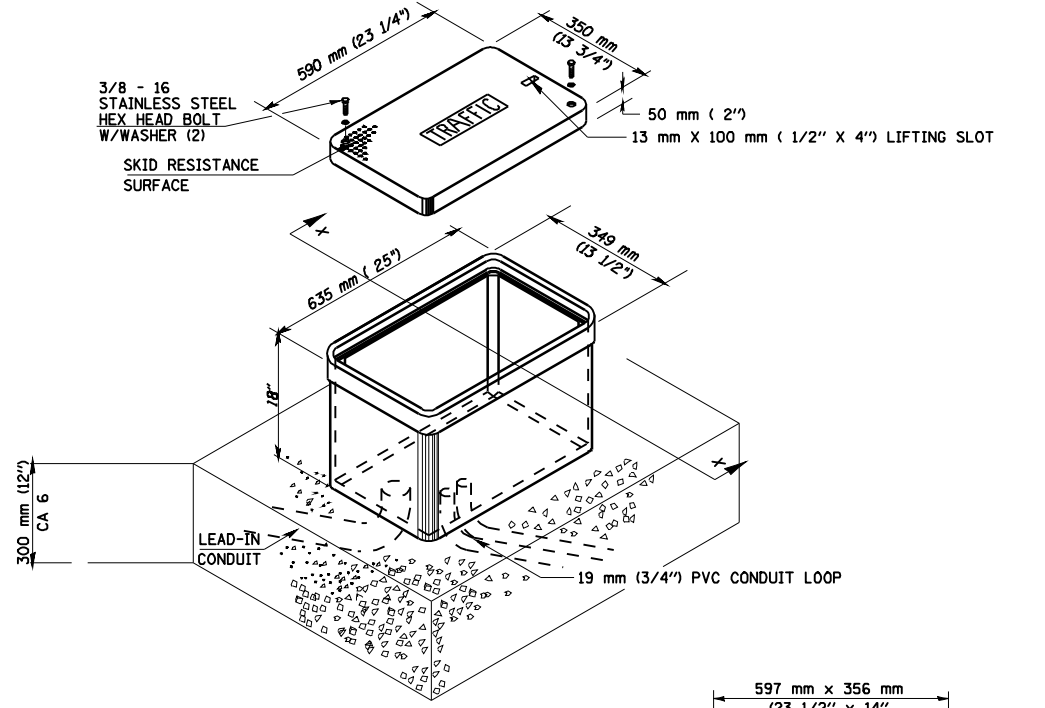


PAVEMENT SAWING DETAIL FOR TUBE ENCASED DETECTOR LOOP WIRE

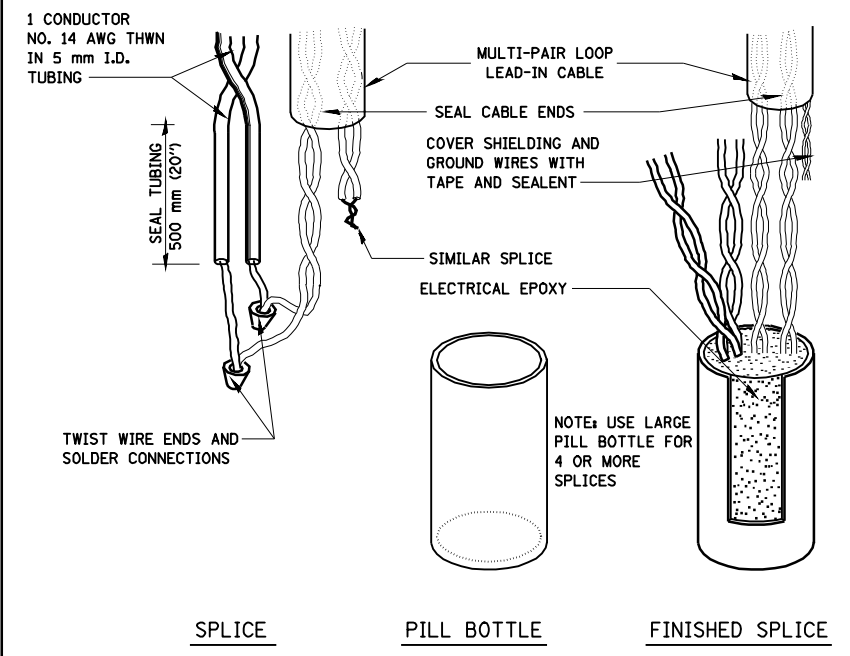


GULFBOX JUNCTION DETAIL

(SHOWING CONNECTION OF TUBE-ENCASED DETECTOR LOOP TO MULTI-PAIR LEAD-IN CABLE)



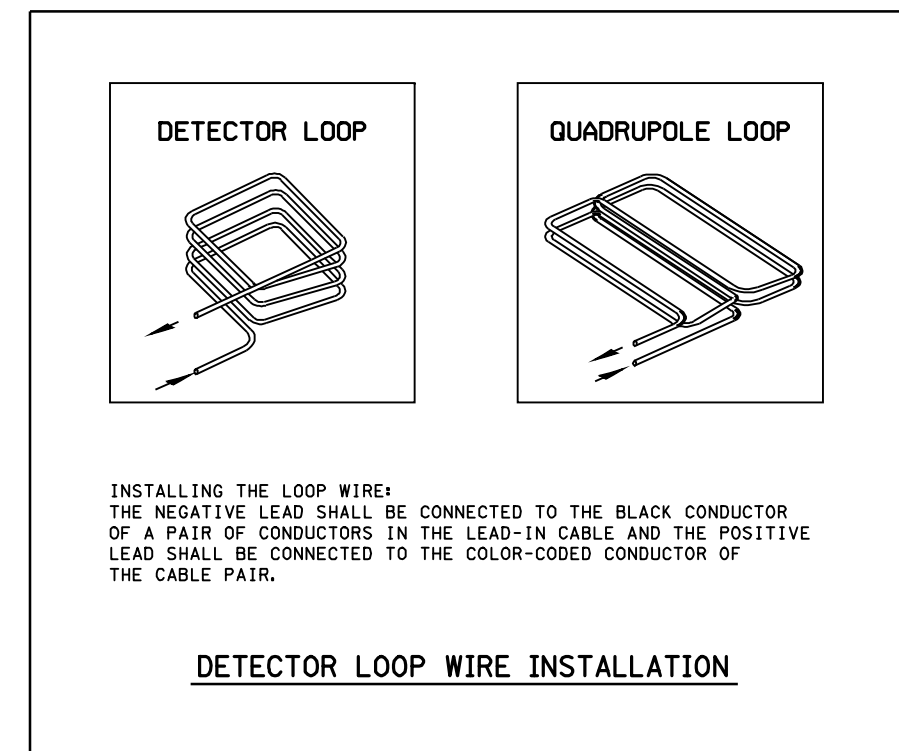
JUNCTION BOX (SPECIAL)



BOTTLE SPLICE DETAIL

FILE NAME =	USER NAME = laughlinr1	DESIGNED -	REVISED -	STATE OF ILLINOIS DEPARTMENT OF TRANSPORTATION	TRAFFIC SIGNAL DETECTOR LOOP DETAILS BUSINESS 55				F.A.P. RTE.	SECTION	COUNTY	TOTAL SHEETS	SHEET NO.
e:\pwwork\pwwid01\LAUGHLINRL\0144500\072000-sht-ta.dgn	DRAWN -	REVISED -	REVISED -						666	SPZ(RS-5)26CS(RS)	SANGAMON	17	15
PLOT SCALE = 48.0000' / IN.	CHECKED -	REVISED -	REVISED -						CONTRACT NO. 72C00				
PLOT DATE = Jun-05-2009 01:03:54PM	DATE -	REVISED -	REVISED -						ILLINOIS FED. AID PROJECT				
					SCALE:	SHEET NO.	OF SHEETS	STA.	TO STA.				

LOOP DESIGNATION	NUMBER OF TURNS	READING @ HANDHOLE OR JUNCTION BOX				READING @ CONTROLLER				LOOP DESIGNATION	NUMBER OF TURNS	READING @ HANDHOLE OR JUNCTION BOX				READING @ CONTROLLER			
		CALCULATED		METERED		CALCULATED		METERED				CALCULATED		METERED		CALCULATED		METERED	
		$\mu\eta$	Ω	$\mu\eta$	Ω	$\mu\eta$	Ω	$\mu\eta$	Ω			$\mu\eta$	Ω	$\mu\eta$	Ω	$\mu\eta$	Ω	$\mu\eta$	Ω



- DETECTOR NOTES:
1. THE DETECTOR LOOP SHALL BE CENTERED IN THE LANE IN WHICH IT IS SHOWN. ANY ADJUSTMENTS ARE TO BE MADE ONLY AT THE DIRECTION OF THE ENGINEER.
 2. THE DETECTOR LOOPS SHALL CONSIST OF THE NUMBER OF TURNS AS SHOWN IN THE PLANS OR AS DIRECTED BY THE ENGINEER.
 3. ACCEPTANCE OF THE LOOPS AS METERED SHALL BE DETERMINED BY THE ENGINEER.
 4. ALL DETECTOR WIRES SHALL BE MARKED WITH WATERPROOF LABELS USING THE WIRING IDENTIFICATION SHOWN ON THE PLANS. THE + AND - OF EACH LOOP MUST BE USED TO IDENTIFY CURRENT FLOW. ALWAYS CONNECT THE BLACK WIRE OF EACH PAIR TO THE NEGATIVE (-) LOOP WIRE.
 5. ALL QUADRAPOLE LOOPS SHALL BE 2-4-2 DESIGN.

TRAFFIC SIGNAL PLAN LEGEND

EXISTING	PROPOSED	DESCRIPTION
		SIGNAL HEAD
		SIGNAL HEAD WITH BACKPLATE
		TEMPORARY SIGNAL HEAD
		PEDESTRIAN SIGNAL HEAD
		PEDESTRIAN PUSHBUTTON DETECTOR
		DETECTOR LOOP
		QUADRAPOLE DETECTOR LOOP
		SIGNAL POST
		ALUMINUM MAST ARM ASSEMBLY AND POLE
		STEEL MAST ARM ASSEMBLY AND POLE
		WOOD POLE
		WOOD POLE WITH GUY
		SERVICE INSTALLATION
		CONTROLLER
		HANDHOLE
		HEAVY DUTY HANDHOLE
		DOUBLE HANDHOLE
		JUNCTION BOX
		GULFBOX JUNCTION
		AERIAL CABLE
		CONDUIT LENGTH - CONSTRUCTION (T=TRENCH P=PUSHED A=AUGERED E=EXISTING) SIZE - TYPE (S=STEEL P=PVC F=FIBER DUCT U=UNI-DUCT)
		CONDUIT SPLICE
		SPAN WIRE / TETHER WIRE
		21 SIDEWALK REMOVAL IN SQ M (SQ FT)
		9 PC CONC SDWLK 100 mm IN SQ M (SQ YD)
		12 PC CONC SDWLK 100 mm SPECIAL IN SQ M (SQ YD)

TRAFFIC SIGNAL WIRING DIAGRAM LEGEND

EXISTING	PROPOSED	DESCRIPTION
		200 mm (8") SIGNAL SECTION
		300 mm (12") SIGNAL SECTION
		DIRECTIONAL SIGNAL SECTION
		225 mm (9") PEDESTRIAN SIGNAL FACE
		300 mm (12") PEDESTRIAN SIGNAL FACE
		SIGNAL FACE WITH BACKPLATE
		PROGRAMMED SIGNAL SECTION
		SIGNAL SECTION WITH LOUVRE
		DUAL-INDICATION SIGNAL SECTION
		INDUCTION DETECTOR LOOP
		QUADRAPOLE DETECTOR LOOP
		DIRECT-CONNECTED LOOP LEAD-IN (TWISTED)
		ELECTRIC CABLE DENOTING NUMBER OF CONDUCTORS
		ELECTRIC CABLE TO BE REMOVED
		ELECTRIC CABLE IDENTIFIER TAPE CODES (R= RED W= WHITE Y= YELLOW G= GREEN B= BLUE O= ORANGE)
		PEDESTRIAN PUSHBUTTON DETECTOR
		VIDEO DETECTION CAMERA
		EMERGENCY VEHICLE PREEMPTOR



FILE NAME =	USER NAME = laughlinr1	DESIGNED -	REVISED -
e:\pwwork\pwidot\LAUGHLINRL\0144500\072C00-sht-ta.dgn		DRAWN -	REVISED -
	PLOT SCALE = 40.0000 ' / IN.	CHECKED -	REVISED -
	PLOT DATE = Jun-05-2009 01:03:58PM	DATE -	REVISED -

**STATE OF ILLINOIS
DEPARTMENT OF TRANSPORTATION**

**LEGEND FOR TRAFFIC SIGNAL DETAILS
BUSINESS 55**

SCALE: SHEET NO. OF SHEETS STA. TO STA.

F.A.P. RTE.	SECTION	COUNTY	TOTAL SHEETS	SHEET NO.
666	SPZ(RS-5),26CS(RS)	SANGAMON	17	17
CONTRACT NO. 72C00			ILLINOIS FED. AID PROJECT	