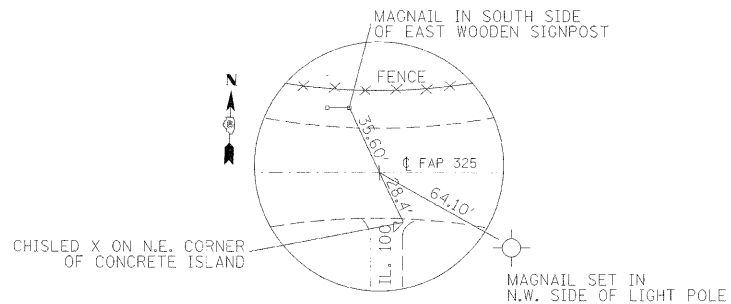


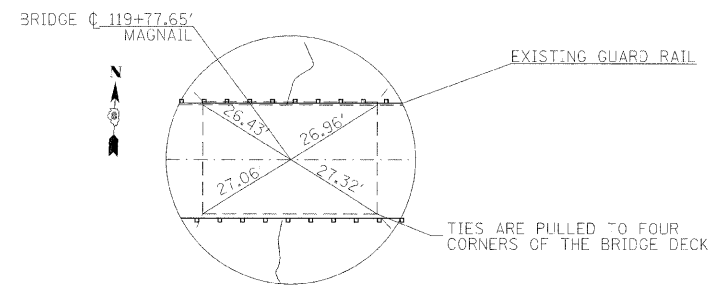
ALL TIES ARE TAPERED
DIRECT MEASUREMENTS
STA. 108+07.97

STATIONING IS APPROXIMATELY
450' WEST OF RT 100 C



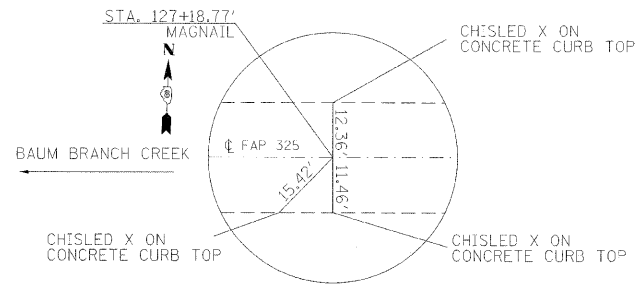
P.T. C STA. 112+81.53
MAGNAIL

ALL TIES ARE TAPERED
DIRECT MEASUREMENTS



S.N. 042-0006
BAUM BRANCH CREEK
BRIDGE C STA. 119+77.65

NOTE:
ALL TIES ARE TAPERED
DIRECT NTC



C STA. 127+18.77
MAG NAIL

NOTE:
ALL TIES ARE TAPERED
DIRECT NTC

SITE BENCH MARKS

BM 303
EL. = 451.895
APPROX. STA. = 120+50.75' LT.
IL 16

BM U241 RESET
EL=441.433
APPROX STA. / OFFSET =
504+08.20' RT.
ON IL RT. 100

BENCH MARK
RR SPIKE DRIVEN 14" ABOVE GROUND IN SOUTH SIDE OF POWER POLE, 100'
N.E. OF RT 16

FILE NAME =	USER NAME = manntm	DESIGNED -	REVISED -	STATE OF ILLINOIS DEPARTMENT OF TRANSPORTATION	TIE POINTS & BENCH MARKS			F.A.P. RTE.	SECTION	COUNTY	TOTAL SHEETS	SHEET NO.			
ct:\px\work\pwcot\manntm\dms51935\pln02	2006.dgn	DRAWN -	REVISED -		SCALE:	SHEET NO.	OF	SHEETS	STA.	TO STA.	325	3BR-2	JERSEY	90	9
		CHECKED -	REVISED -								CONTRACT NO. 76B01				
		DATE -	REVISED -								FED. ROAD DIST. NO. ILLINOIS FED. AID PROJECT				