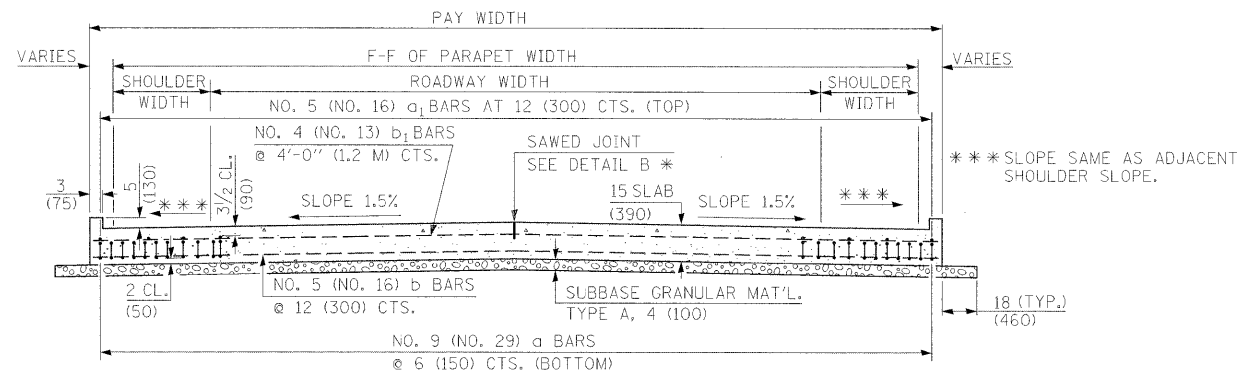


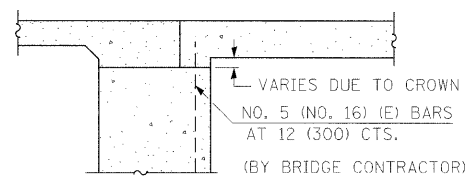
**SECTION C-C**

ⓐ STAGGER NO. 9 (NO. 29) A BARS AS SHOWN ON PLAN - FULL WIDTH



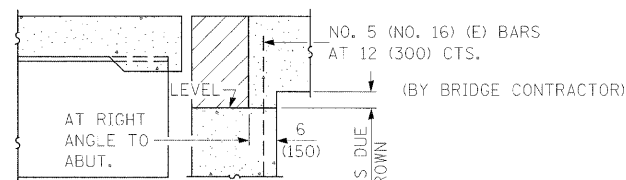
**SECTION D-D**

(SEE PLAN FOR DIMENSIONS NOT SHOWN)



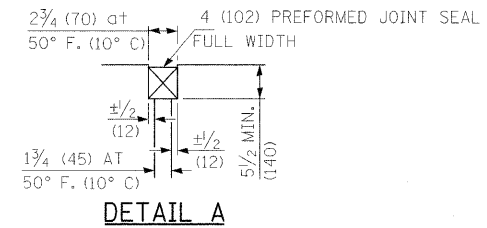
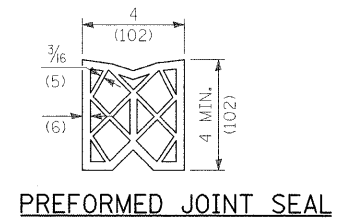
**SECTION E-E**

(INTEGRAL ABUTMENTS)

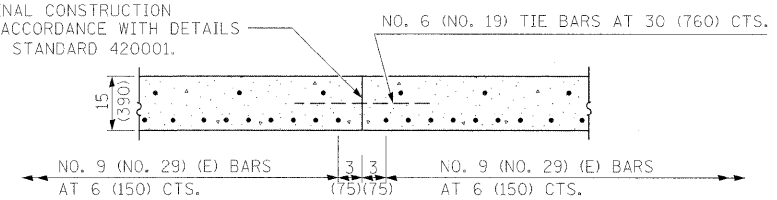


**SECTION E-E**

(JOINTED ABUTMENTS)

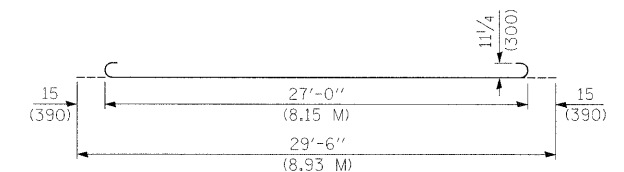


LONGITUDINAL CONSTRUCTION JOINT IN ACCORDANCE WITH DETAILS SHOWN ON STANDARD 420001.

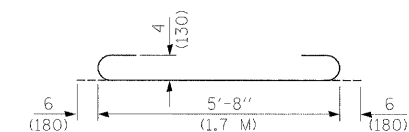


**OPTIONAL LONGITUDINAL CONSTRUCTION JOINT**

AS APPROVED BY THE ENGINEER, THE CONTRACTOR MAY ELECT TO REDUCE THE WIDTHS OF POUR BY USE OF THE OPTIONAL LONGITUDINAL CONSTRUCTION JOINT SHOWN. JOINTS SHALL BE LOCATED AT THE EDGE OF A TRAFFIC LANE.



**BAR a**



**BAR a<sub>2</sub>**

**DESIGN STRESSES**

f<sub>y</sub> = 60,000 P.S.I. (400 MPA)  
 f'c = 3,500 P.S.I. (24 MPA)  
 n = 8.5

FILE NAME =	USER NAME = manntm	DESIGNED -	REVISED -	<b>STATE OF ILLINOIS DEPARTMENT OF TRANSPORTATION</b>	<b>BRIDGE APPROACH PAVEMENT DETAIL</b>	F.A.P. RTE.	SECTION	COUNTY	TOTAL SHEETS	SHEET NO.	
ca:\pw_work\pwidot\manntm\dms51935\pIn0206a.dgn		DRAWN -	REVISED -			325	3BR-2	JERSEY	90	40	
PLOT SCALE = 20,0000 ' / IN.		CHECKED -	REVISED -			<b>CONTRACT NO. 76B01</b>					
PLOT DATE = 12/11/2008		DATE -	REVISED -			FED. ROAD DIST. NO. 8 ILLINOIS FED. AID PROJECT					
				SCALE:	SHEET NO. 3 OF 4 SHEETS	STA.	TO STA.				