

0420041.76B01_02.DATADGN DEC. 1, 2008

STATE OF ILLINOIS
DEPARTMENT OF TRANSPORTATION

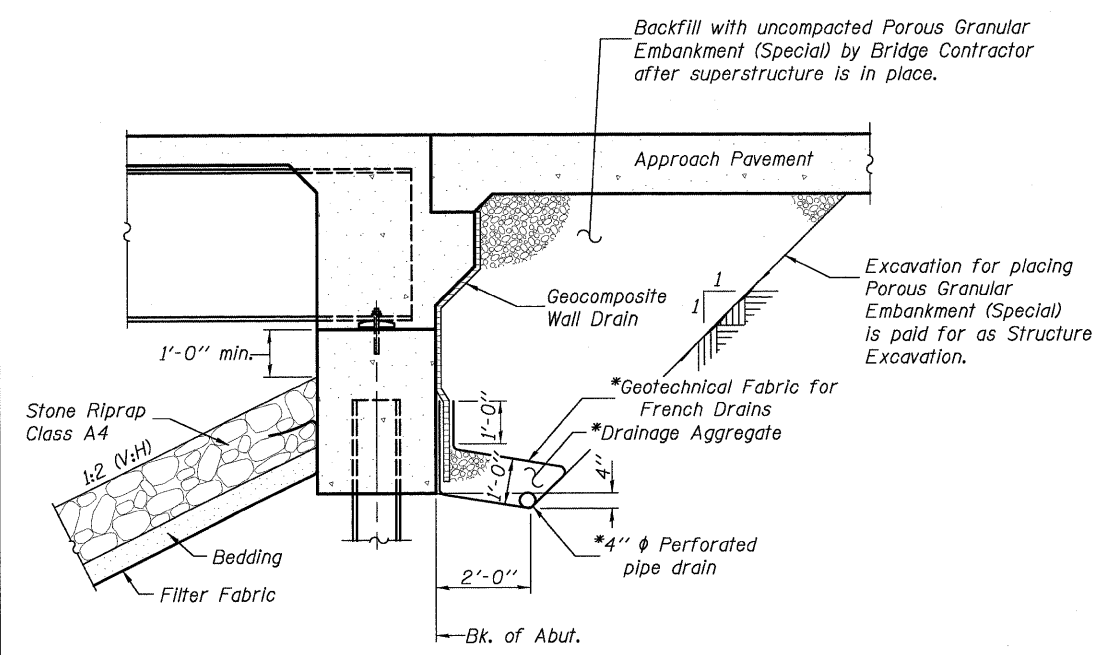
TOTAL BILL OF MATERIAL

ITEM	UNIT	SUPER	SUB	TOTAL
Porous Granular Embankment (Special)	Cu. Yd.	—	98	98
Stone Riprap, Class A4	Sq. Yd.	—	544	544
Filter Fabric	Sq. Yd.	—	544	544
Removal of Existing Structures	Each	—	—	1
Structure Excavation	Cu. Yd.	—	142	142
Floor Drains	Each	8	—	8
Concrete Structures	Cu. Yd.	—	32.0	32.0
Concrete Superstructure	Cu. Yd.	91.9	—	91.9
Bridge Deck Grooving	Sq. Yd.	210	—	210
Concrete Encasement	Cu. Yd.	—	4.2	4.2
** Protective Coat	Sq. Yd.	277	—	277
Furnishing and Erecting Structural Steel	L. Sum	1	—	1
Stud Shear Connectors	Each	1,116	—	1,116
Reinforcement Bars, Epoxy Coated	Pound	18,130	6,080	24,210
Bar Splicers	Each	264	18	282
Furnishing Steel Piles HP 12x53	Foot	—	660	660
Driving Piles	Foot	—	660	660
Pile Shoes	Each	—	12	12
Temporary Sheet Piling	Sq. Ft.	—	—	866
Name Plates	Each	1	—	1
Anchor Bolts, 1"	Each	—	24	24
Geocomposite Wall Drain	Sq. Yd.	—	56	56
Pipe Underdrains for Structures 4"	Foot	—	170	170
Asbestos Bearing Pad Removal	Each	22	—	22

** Quantity includes top of concrete surface of bridge deck back to back of abutments and the top and inside vertical faces of the parapets

GENERAL NOTES

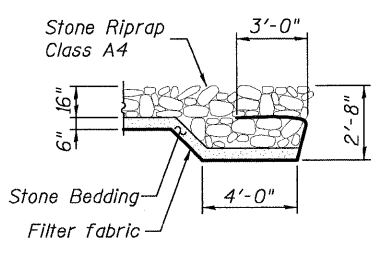
- The Contractor is advised that the existing PPC deck beams are in a deteriorated condition with reduced load carrying capacity. It is the Contractor's responsibility to account for the condition of the beams when developing construction procedures for removal and replacement of the superstructure. If the Contractor's procedures for existing beam removal involves placement of heavy equipment on the existing deck beams, a detailed procedure shall be submitted to the Engineer for approval. The procedure shall include calculations, sealed by an Illinois Licensed Structural Engineer, verifying the structural adequacy of the beams for the proposed loads. Cost included with Removal of Existing Structures.
- Piles shall be driven through 24" diameter precored holes extending to elevation 439.0 (East Abutment) and elevation 439.0 (West Abutment) according to Article 512.09(c) of the Standard Specifications. Excavation and footing removal optional per Contractor. Cost included in Driving Piles.
- Fasteners shall be AASHTO M164 Type 1, mechanically galvanized bolts. Bolts 3/4 in. φ, holes 5/16 in. φ, unless otherwise noted.
- Calculated weight of Structural Steel = 57,610 lbs.
- No field welding is permitted except as specified in the contract documents.
- Reinforcement bars shall conform to the requirements of ASTM A 706 Gr 60. See Special Provisions.
- Reinforcement bars designated (E) shall be epoxy coated.
- If the Contractor elects to use cantilever forming brackets on the exterior beams or girders, the brackets shall be placed at the same locations as required for the hardwood blocks in Article 503.06(b) of the Standard Specifications. If additional cantilever forming brackets are required, hardwood blocking shall be wedged between the exterior and first interior beam at each of these additional bracket locations.
- The Inorganic Zinc Rich Primer / Acrylic / Acrylic Paint System shall be used for shop and field painting of new structural steel except where otherwise noted. The color of the final finish coat for all interior steel surfaces shall be Gray, Munsell No. 5B 7/1. The color of the final finish coat for the exterior and bottom flange of the fascia beams shall be Gray, Munsell No. 5B 7/1. See Special Provision for "Cleaning and Painting New Metal Structures".
- Layout of slope protection system may be varied in the field to suit ground conditions as directed by the Engineer.
- Slipforming of the parapets is not allowed.



SECTION THRU INTEGRAL ABUTMENT
(Horiz. dim. @ Rt. L's)

*Included in the cost of Pipe Underdrains for Structures.

Note:
All drainage system components shall extend to 2'-0" from the end of each wingwall except an outlet pipe shall extend until intersecting with the side slopes. The pipes shall drain into concrete headwalls. (See Article 601.05 of the Standard Specifications and Highway Standard 601101).



STONE RIPRAP FLANK DETAIL

DESIGNED	K.M.M.
CHECKED	L.D.G.
DRAWN	K.H.L.
CHECKED	B.G.H.

GENERAL DATA

SHEET NO. 2 21 SHEETS	F.A.P. RTE.	SECTION	COUNTY	TOTAL SHEETS	SHEET NO.
	325	3BR-2	JERSEY	90	43
S.N. 042-0041			CONTRACT NO. 76B01		
FED. ROAD DIST. NO. _ ILLINOIS FED. AID PROJECT					

H.M. & G. INC. 6020.III