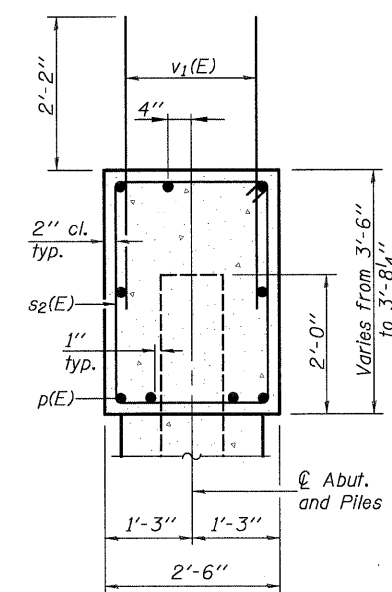
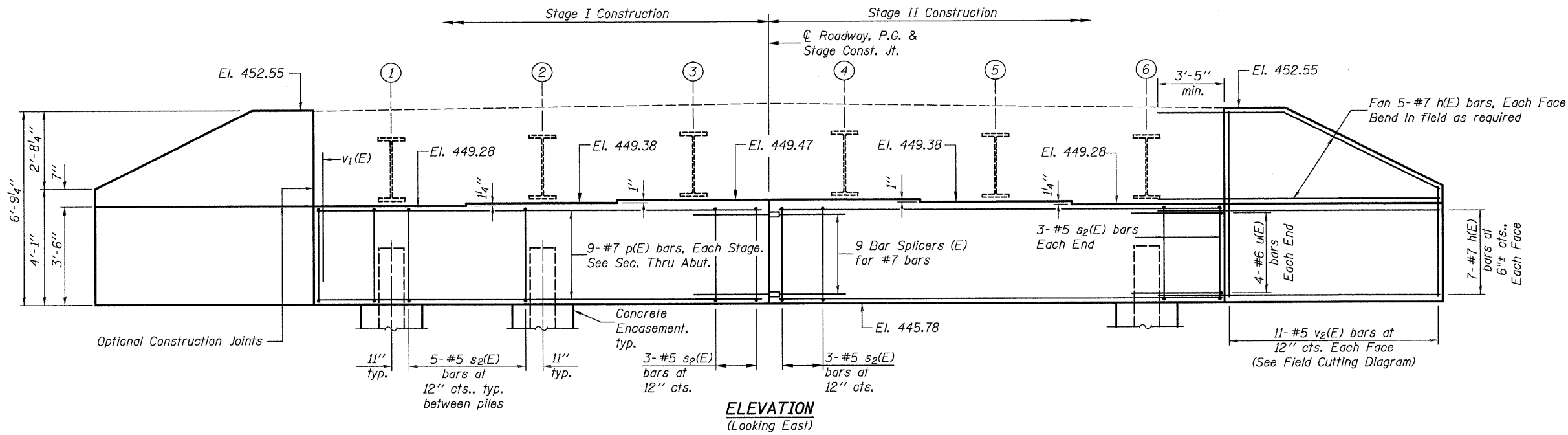


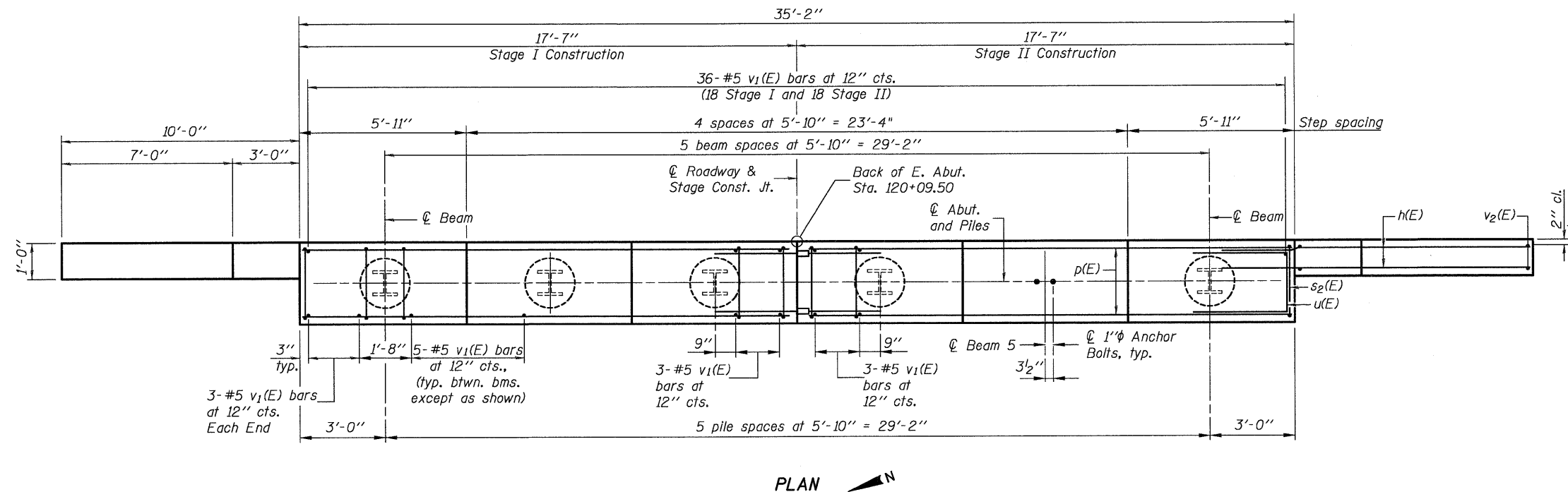
042004L76B01L7.EABT.DGN DEC. 1, 2008

Note: Four steps monolithically with cap.

STATE OF ILLINOIS
DEPARTMENT OF TRANSPORTATION



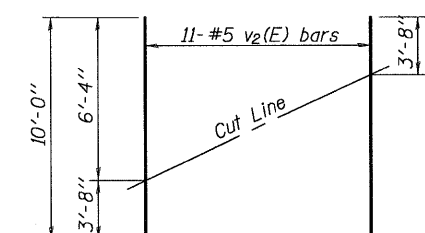
SEC. THRU ABUT.



PLAN

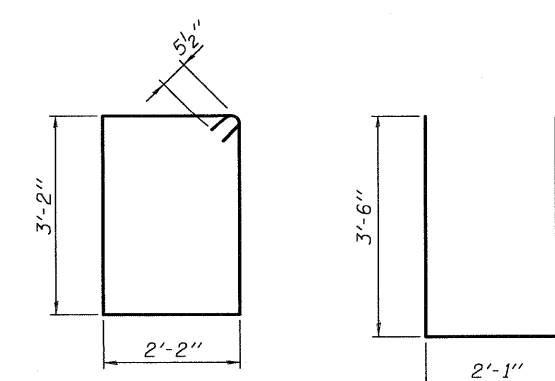
PILE DATA

Type: HP 12x53
Nominal Required Bearing: 419 kips
Factored Resistance Available: 210 kips
Est. Length: 55 feet
No. Production Piles: 6
No. Test Piles: 0



FIELD CUTTING DIAGRAM

Order v2(E) full length. Cut as shown and use remainder of bars in opposite face.



BAR s2(E)

BAR u(E)

BILL OF MATERIAL

Bar	No.	Size	Length	Shape
h(E)	48	#7	14'-0"	
p(E)	18	#7	17'-3"	
s2(E)	32	#5	11'-7"	□
u(E)	8	#6	9'-1"	□
v1(E)	68	#5	4'-4"	
v2(E)	22	#5	10'-0"	
Structure Excavation		Cu. Yd.	71	
Concrete Structures		Cu. Yd.	16.0	
Reinforcement Bars, Epoxy Coated		Pound	3,040	
Furnishing Steel Piles HP 12x53		Foot	330	
Driving Piles		Foot	330	
Pile Shoes		Each	6	
Concrete Encasement		Cu. Yd.	2.1	

For details of Bar Splicers, see sheet 18 of 21.
For details of piles and Concrete Encasement, see sheet 19 of 21.

DESIGNED	L.D.G.
CHECKED	B.G.H.
DRAWN	K.H.L.
CHECKED	B.G.H.
AI-0	5-16-08

SHEET NO. 17 21 SHEETS	F.A.P. RTE.	SECTION	COUNTY	TOTAL SHEETS	SHEET NO.
	325	3BR-2	JERSEY	90	58
	S.N. 042-0041		CONTRACT NO. 76B01		
FED. ROAD DIST. NO. ILLINOIS FED. AID PROJECT					

EAST ABUTMENT

H.M. & G. NO. 6020.III