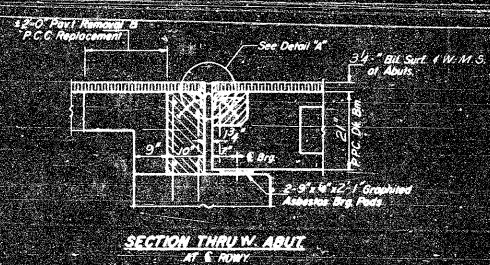
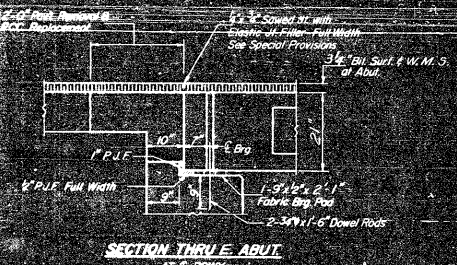


STATE OF ILLINOIS
DEPARTMENT OF TRANSPORTATION

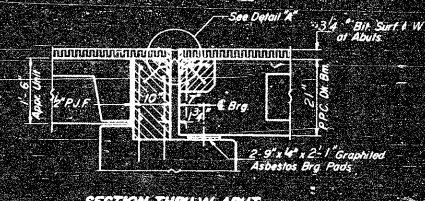
PROJECT NO.	325	SECTION	3BR-2	COUNTY	JERSEY	TOTAL SHEETS	90	SHEET NO.	66
DATE	12/10/2008								



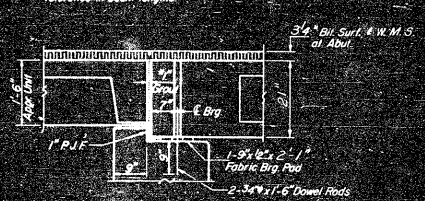
SECTION THRU W. ABUT
AT E. ROWY



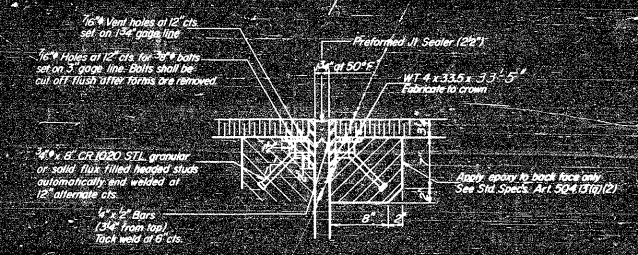
SECTION THRU E. ABUT
AT E. ROWY



SECTION THRU W. ABUT
AT OUTSIDE BEAM



SECTION THRU E. ABUT
AT OUTSIDE BEAM

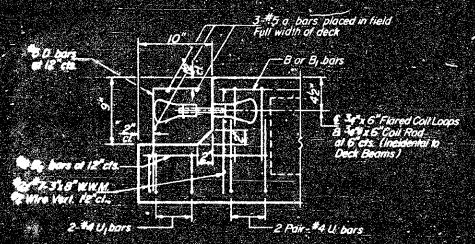


DETAIL 'A'

NOTE: Dimensions are of right angles.
Hatched areas to be poured after beams have been erected and joints grouted.
Ends of beams shall be aligned at the expansion joints. Any linear variation in the beam lengths shall be placed at the fixed joint. See End of Beam Detail for reinforcement.



PREFORMED JOINT
SEALER (207)



END OF BEAM (EXR END)
(Dimensions are at right angles)

DESIGNED	BY	19
CHECKED	BY	
DRAWN	BY	
CHECKED	BY	

DETAILS
F.A. RT. 91, SEC. 3BR-1
JERSEY COUNTY
STATION 119+77.65