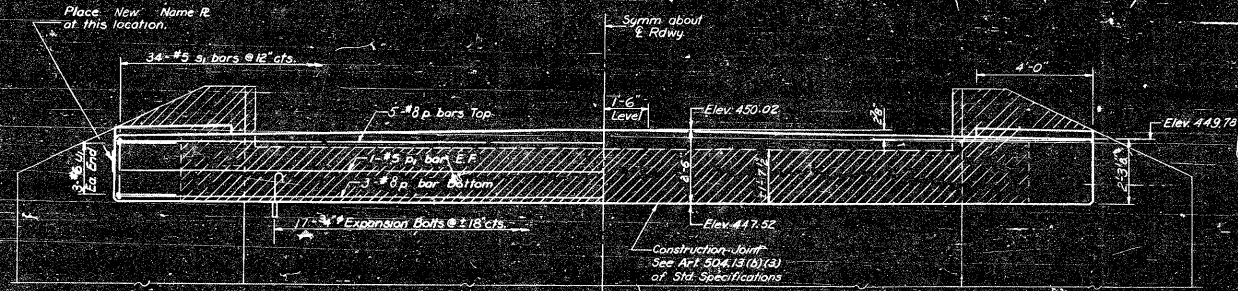
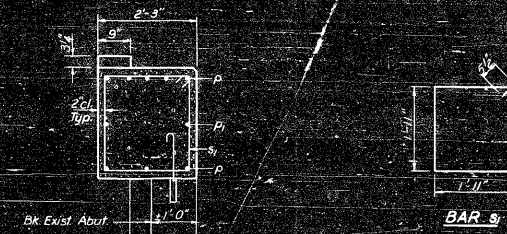


STATE OF ILLINOIS
DEPARTMENT OF TRANSPORTATION
DIVISION OF HIGHWAYS

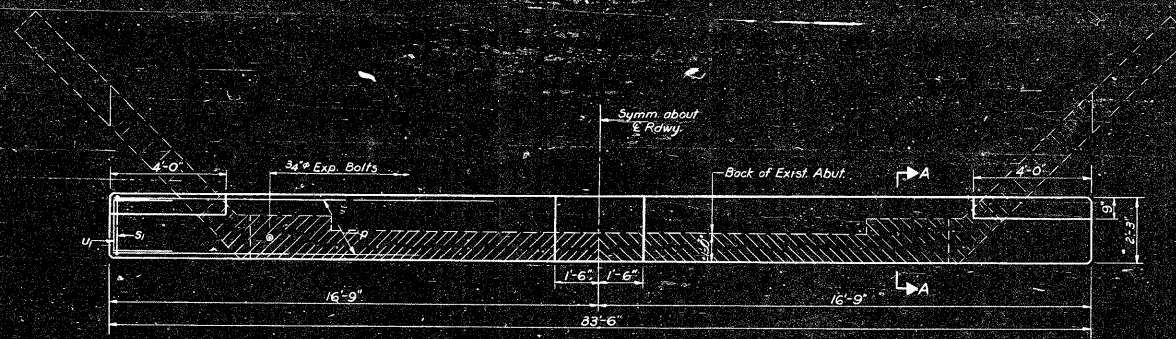
PROJECT NO.	325	SHEET NO.	90
SECTION	3BR-2	COUNTY	JERSEY
DATE	24	YEAR	19



ELEVATION



SECTION A-A



PLAN

BILL OF MATERIAL

Bar No.	Size	Length	Shape
B	#4	33'-3"	
P	#5	33'-3"	
S1	#5	9'-7"	
U	#6	5'-10"	
Class X Concrete			Cu Yds 8.7
Reinforcement Bars			Lbs 7740
Expansion Bolts			Each 172
Concrete Removal			Cu Yds 1

DESIGNED: Raymond Paul Summer
 CHECKED: James P. ...
 DRAWN: R. P. Summer
 CHECKED: J. P. ...

EXAMINED: ...
 MAY 5 1972
 PREPARED: ...
 DATE: ...

NOTE
 Hatched area indicates Concrete Removal. Reinforcement extending into removed area shall be cleaned and incorporated into the new construction.
 Expansion bolts shall be anchored in sound concrete. All edges shall have standard chamfers except as noted.

EAST ABUTMENT
 FA RT. 91 SEC. 3BR-1
 JERSEY COUNTY
 STATION 119+77.65