

F.A.P. RTE.	SECTION	COUNTY	TOTAL SHEETS	SHEET NO.
998	82-IDM-2	ST. CLAIR	21	1
FED. ROAD DIST. NO.	ILLINOIS	CONTRACT NO. 76C69		

\*21+1=22

D-98-054-09



STATE OF ILLINOIS  
DEPARTMENT OF TRANSPORTATION  
DIVISION OF HIGHWAYS

**PROPOSED  
HIGHWAY PLANS**

FAP ROUTE 998 (I-70)  
SECTION 82-1DM-2

ST. CLAIR COUNTY  
C-98-054-09

**PROPOSED I-70 CORRIDOR  
FROM INDUSTRIAL DRIVE TO CAHOKIA CANAL R.O.W.  
SITE CLEARING, DEMOLITION AND  
UTILITY RELOCATION**

FOR INDEX OF SHEETS, SEE SHEET NO. 2

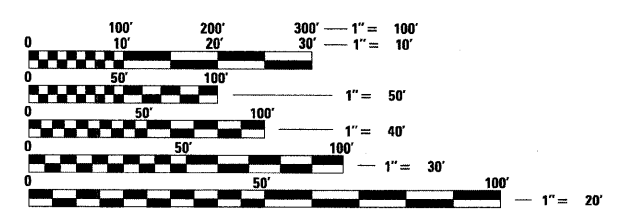
**INTERSTATE 70**  
ADT = 59,940 (2030)  
DESIGN SPEED = 60 MPH  
POSTED SPEED = 55 MPH

**IL ROUTE 3 (ST. CLAIR AVE.)**  
ADT = 6,400 (2008), 7,900 (2030)  
DESIGN SPEED = 40 MPH (S. OF PACKERS AVE.)  
DESIGN SPEED = 50 MPH (N. OF PACKERS AVE.)  
POSTED SPEED = 35 MPH (S. OF PACKERS AVE.)  
POSTED SPEED = 45 MPH (N. OF PACKERS AVE.)

**1ST STREET**  
ADT = 1,350 (2008), 1,700 (2030)  
DESIGN SPEED = 35 MPH  
POSTED SPEED = 30 MPH

PROJECT LOCATED IN FAIRMONT CITY, ILLINOIS

PLANS 1" = 50'  
PROFILES 1" = 5'  
X-SECTIONS 1" = 10' H  
1" = 5' V



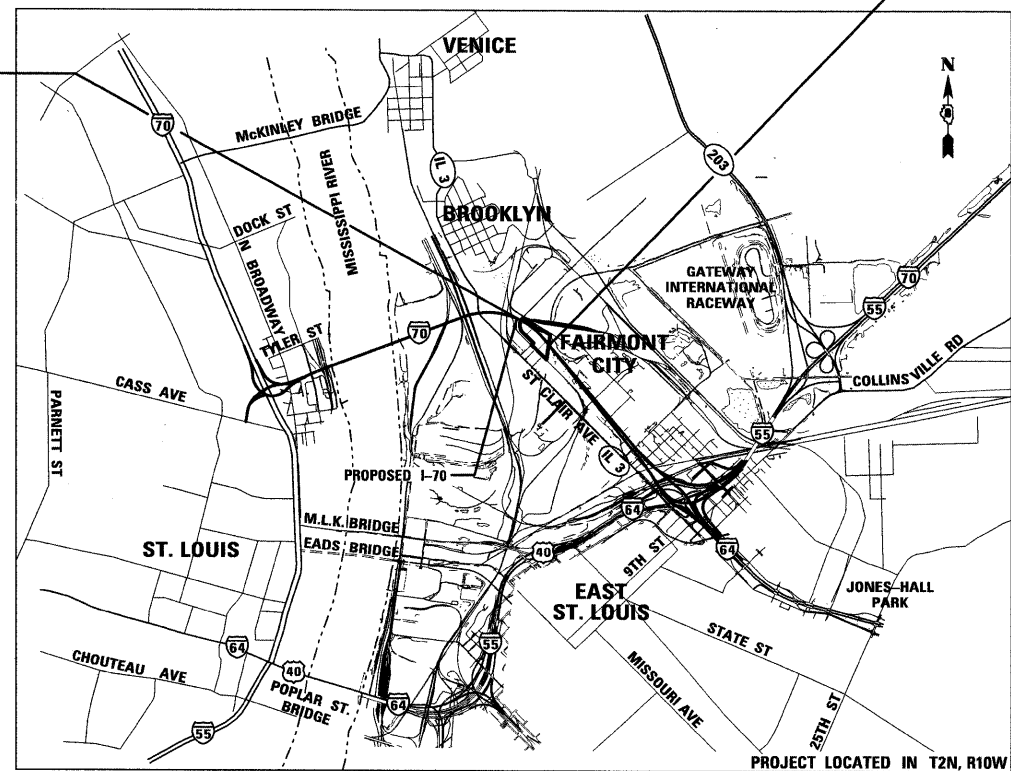
FULL SIZE PLANS HAVE BEEN PREPARED USING STANDARD ENGINEERING SCALES. REDUCED SIZED PLANS WILL NOT CONFORM TO STANDARD SCALES. IN MAKING MEASUREMENTS ON REDUCED PLANS, THE ABOVE SCALES MAY BE USED.

J.U.L.I.E.  
JOINT UTILITY LOCATION INFORMATION FOR EXCAVATION  
1-800-892-0123  
OR 811

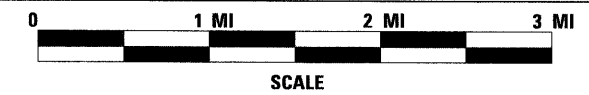
PROJECT ENGINEER : MICHAEL D. PRITCHETT (618) 346-3180  
PROJECT MANAGER : JANE CHASTAIN MERCER (618) 346-3206

CONTRACT NO. 76C69

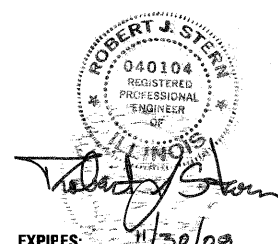
BEGIN IMPROVEMENT INDUSTRIAL DRIVE  
STA. 139 + 77.45 (I-70)



END IMPROVEMENT CAHOKIA CANAL R.O.W.  
STA. 152 + 28.01 (I-70)



GROSS LENGTH OF PROJECT: 1,250.56'  
NET LENGTH OF PROJECT: 1,250.56'



EXPIRES: 11/30/09  
DATE: 4/30/09  
FOR SHEETS: 1 TO 16

**TENG**

TENG & ASSOCIATES, INC.  
ENGINEERS/ARCHITECTS/PLANNERS  
205 N. MICHIGAN AVE. CHICAGO, IL 60601  
TELEPHONE: 312.616-0000

STATE OF ILLINOIS  
DEPARTMENT OF TRANSPORTATION  
DIVISION OF HIGHWAYS

SUBMITTED May 5 20 09

May C Jamel  
DEPUTY DIRECTOR OF HIGHWAYS, REGION ENGINEER

June 26, 20 09  
Charles G. Ingersoll  
ENGINEER OF DESIGN AND ENVIRONMENT

June 26, 20 09  
Christine M. Reed  
DIRECTOR OF HIGHWAYS, CHIEF ENGINEER

**PRINTED BY THE AUTHORITY  
OF THE STATE OF ILLINOIS**