

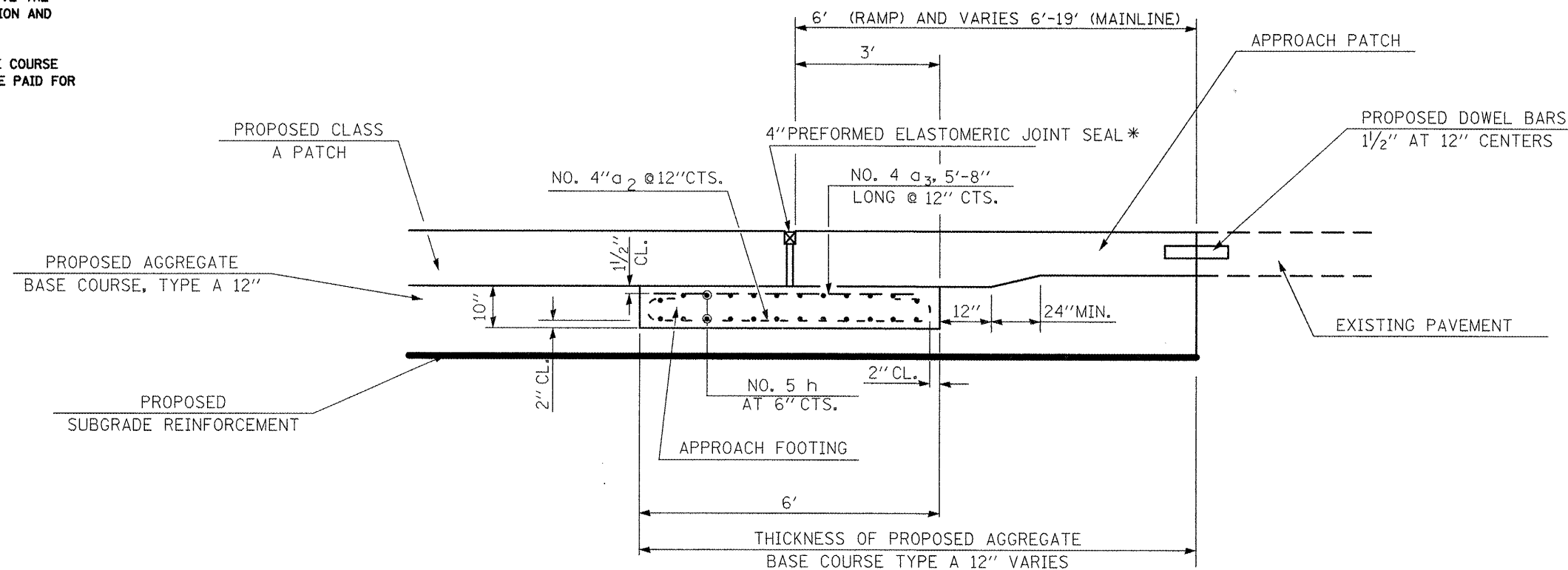
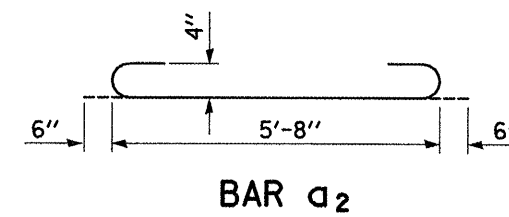
EXPANSION JOINT SPECIAL NOTES

ALL EXCAVATION AND PAVEMENT REMOVAL REQUIRED FOR THE CONSTRUCTION OF THIS ITEM SHALL BE INCLUDED IN THE COST FOR EXPANSION JOINT (SPECIAL). SAW CUTS SHALL BE PAID FOR SEPARATELY.

UPON THE ENGINEER'S APPROVAL OF THE CONSTRUCTION AND INSTALLATION METHOD, A PRECAST APPROACH FOOTING CAN BE USED IN LIEU OF THE CAST-IN PLACE FOOTING. THE WIDTH OF THE PRECAST FOOTING SHALL NOT BE LESS THAN 6 FOOT.

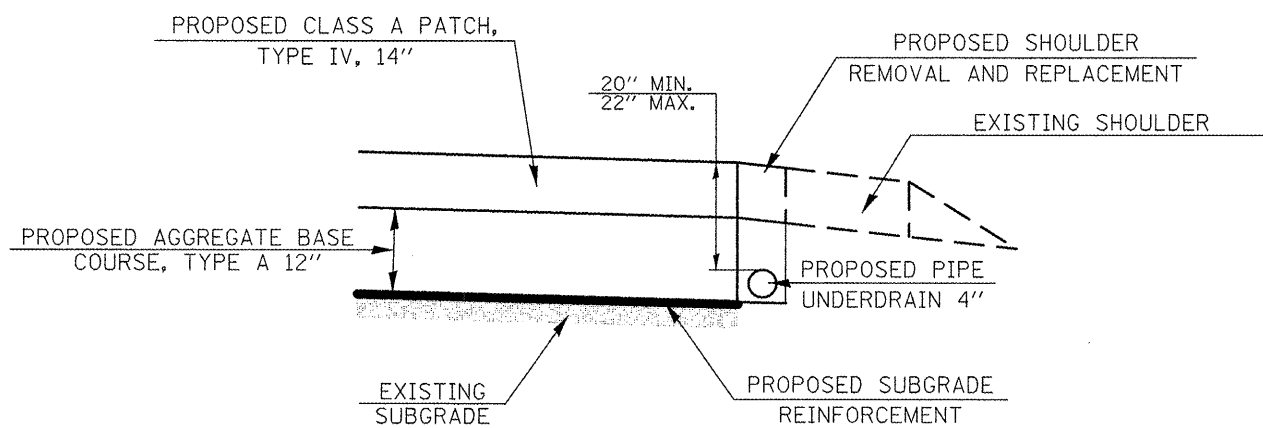
UPON THE ENGINEER'S APPROVAL, A PAINTED STEEL PLATE WITH EQUAL OR GREAT SHEAR STRENGTH AS THE CAST-IN-PLACE FOOTING CAN BE USED IN LIEU OF THE CAST-IN-PLACE FOOTING. THE WIDTH OF THE PAINTED STEEL PLATE SHALL NOT BE LESS THAN 6 FOOT AND THE TOP SHALL BE COATED WITH A LUBRICANT PRIOR TO POURING CONCRETE ABOVE THE PLATE. THIS WORK SHALL BE APPROVED BY THE ENGINEER PRIOR TO CONSTRUCTION AND INSTALLATION.

IF THE PAINTED STEEL PLATE IS APPROVED, THE DEPTH OF THE AGGREGATE BASE COURSE TYPE A BELOW THE PLATE AND SHALL BE INCREASED TO 12 INCHES AND SHALL BE PAID FOR AS SUCH.



**EXPANSION JOINT (SPECIAL) DETAIL**

\* 20° SKEW FOR MAINLINE PERPENDICULAR FOR RAMPS



**DETAIL I-55/70 @ IL 159**

|             |                    |            |           |   |                     |           |    |        |                   |                   |   |                    |                 |
|-------------|--------------------|------------|-----------|---|---------------------|-----------|----|--------|-------------------|-------------------|---|--------------------|-----------------|
| FILE NAME = | USER NAME = #USER# | DESIGNED - | REVISED - | <b>STATE OF ILLINOIS<br/>DEPARTMENT OF TRANSPORTATION</b> | <b>DETAIL SHEET</b> |           |    |        | F.A.I. RTE.<br>70 | SECTION<br>60-9-1 | COUNTY<br>MADISON                             | TOTAL SHEETS<br>12 | SHEET NO.<br>12 |
| #FILEL#     |                    | DRAWN -    | REVISED - |   | SCALE:              | SHEET NO. | OF | SHEETS | STA.              | TO STA.           | <b>CONTRACT NO. 76D07</b>                     |                    |                 |
|             |                    | CHECKED -  | REVISED - |   |                     |           |    |        |                   |                   | FED. ROAD DIST. NO. ILLINOIS FED. AID PROJECT |                    |                 |
|             |                    | DATE -     | REVISED - |   |                     |           |    |        |                   |                   |   |                    |                 |