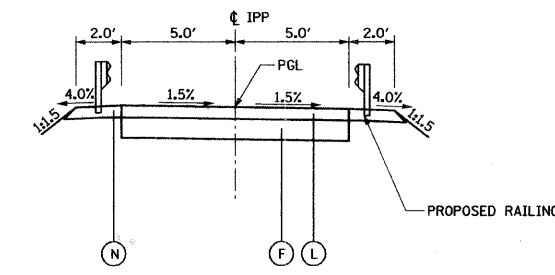


EXISTING GABLES BOULEVARD
 STA 30+25.00 LT TO STA 32+18 LT
 STA 30+25.00 RT TO STA 32+56 RT



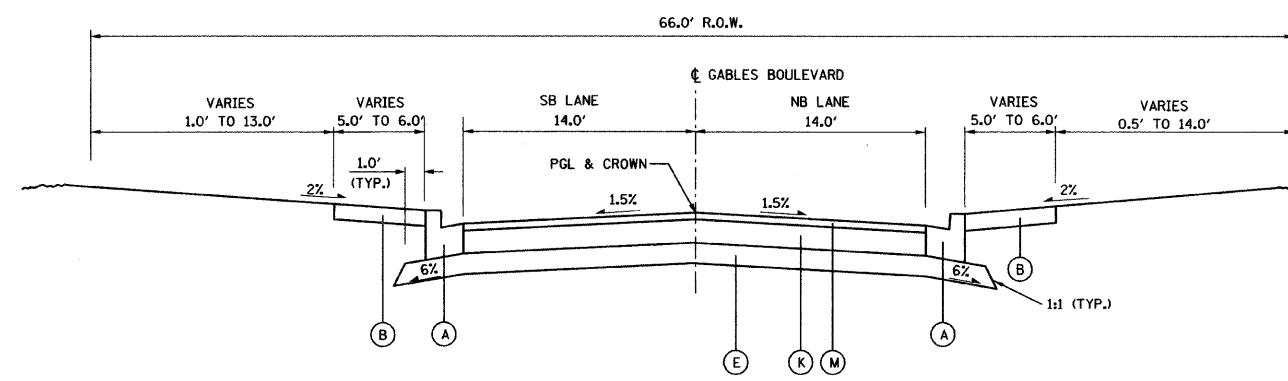
PROPOSED ILLINOIS PRAIRIE PATH (IPP)
 STA 16+66.12 TO STA 19+18.59

EXISTING LEGEND

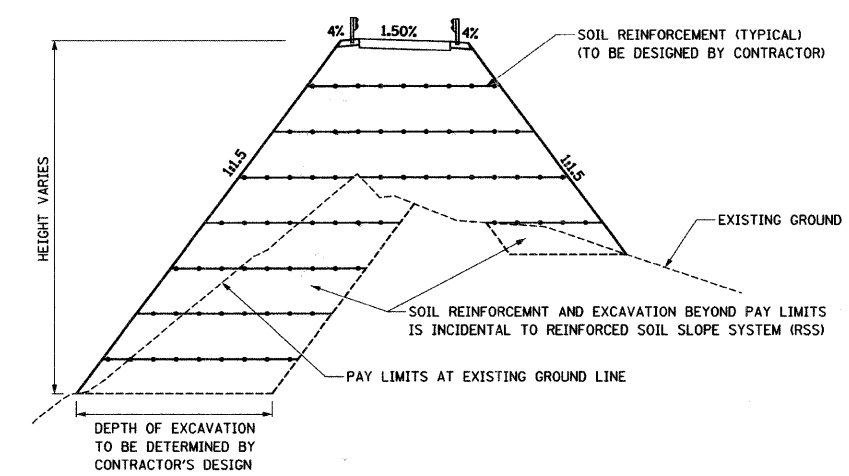
- ① COMBINATION CONC. CURB & GUTTER, TYPE B-6.12
- ② PORTLAND CEMENT CONCRETE SIDEWALK, 4"

PROPOSED LEGEND

- Ⓐ COMBINATION CONC. CURB & GUTTER, TYPE B-6.12 THICKNESS OF GUTTER FLAG TO MATCH THICKNESS OF BITUMINOUS PAVEMENT SECTION
- Ⓑ PORTLAND CEMENT CONCRETE SIDEWALK, 4 INCH
- Ⓒ NOT USED
- Ⓓ SUB-BASE GRANULAR MATERIAL, TYPE B 4"
- Ⓔ AGGREGATE SUBGRADE 12"
- Ⓕ AGGREGATE BASE COURSE, TYPE B 4"
- Ⓖ AGGREGATE BASE COURSE, TYPE B 9"
- Ⓗ HOT-MIX ASPHALT BASE COURSE, 4"
- Ⓘ NOT USED
- Ⓙ HOT-MIX ASPHALT BINDER COURSE, IL-19.0, N50, 2 1/4"
- Ⓚ HOT-MIX ASPHALT BINDER COURSE, IL-19.0, N70, 9"
- Ⓛ HOT-MIX ASPHALT SURFACE COURSE, MIX "C", N50, 2"
- Ⓜ HOT-MIX ASPHALT SURFACE COURSE, MIX "D", N70, 2"
- Ⓝ AGGREGATE SHOULDERS, TYPE A 4"

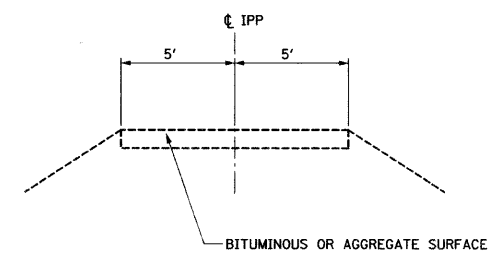


PROPOSED GABLES BOULEVARD
 STA 30+25.00 LT TO STA 31+67.11 LT
 STA 30+25.00 RT TO STA 32+25.29 RT



PROPOSED ILLINOIS PRAIRIE PATH (IPP) SOIL REINFORCEMENT

NOTES:
 1. SEE FIRST TYPICAL SECTION SHEET FOR NOTES



EXISTING ILLINOIS PRAIRIE PATH (IPP)
 STA 11+48.42 TO STA 11+98.04
 STA 16+66.12 TO STA 19+18.59

BRIDGE OMISSION STA 11+98.04 TO STA 16+66.12

| REVISIONS | |
|-----------|------|
| NAME | DATE |
| | |
| | |
| | |
| | |
| | |
| | |
| | |
| | |
| | |
| | |

CITY OF WHEATON
 MANCHESTER ROAD / WESLEY STREET
 OVER UNION PACIFIC RAILROAD
 TYPICAL SECTIONS
 SCALE: VERT. N.T.S. HORIZ. DATE 6/4/2008
 DRAWN BY QNW CHECKED BY JLC