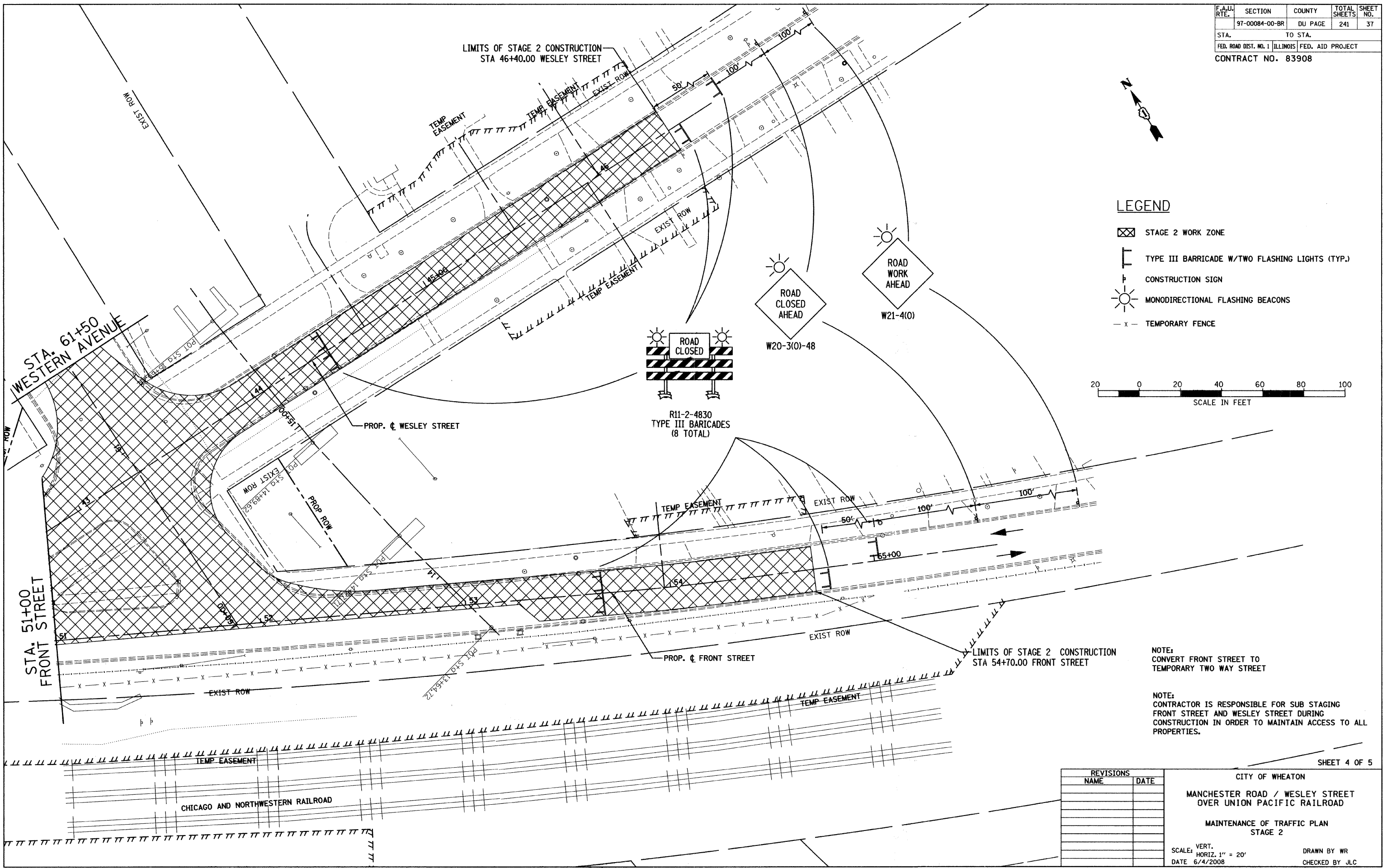
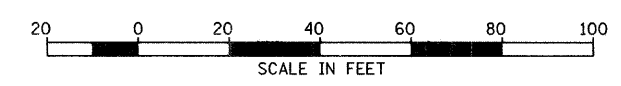


F.A.U. RTE.	SECTION	COUNTY	TOTAL SHEETS	SHEET NO.
97-00084-00-BR	DU PAGE	ILLINOIS	241	37
STA.	TO STA.			
FED. ROAD DIST. NO. 1	ILLINOIS	FED. AID PROJECT		
CONTRACT NO. 83908				



**LEGEND**

- STAGE 2 WORK ZONE
- TYPE III BARRICADE W/TWO FLASHING LIGHTS (TYP.)
- CONSTRUCTION SIGN
- MONODIRECTIONAL FLASHING BEACONS
- x - TEMPORARY FENCE



NOTE:  
CONVERT FRONT STREET TO  
TEMPORARY TWO WAY STREET

NOTE:  
CONTRACTOR IS RESPONSIBLE FOR SUB STAGING  
FRONT STREET AND WESLEY STREET DURING  
CONSTRUCTION IN ORDER TO MAINTAIN ACCESS TO ALL  
PROPERTIES.

REVISIONS	
NAME	DATE

CITY OF WHEATON  
MANCHESTER ROAD / WESLEY STREET  
OVER UNION PACIFIC RAILROAD  
MAINTENANCE OF TRAFFIC PLAN  
STAGE 2  
SCALE: VERT. 1" = 20'  
HORIZ. 1" = 20'  
DATE 6/4/2008  
DRAWN BY WR  
CHECKED BY JLC