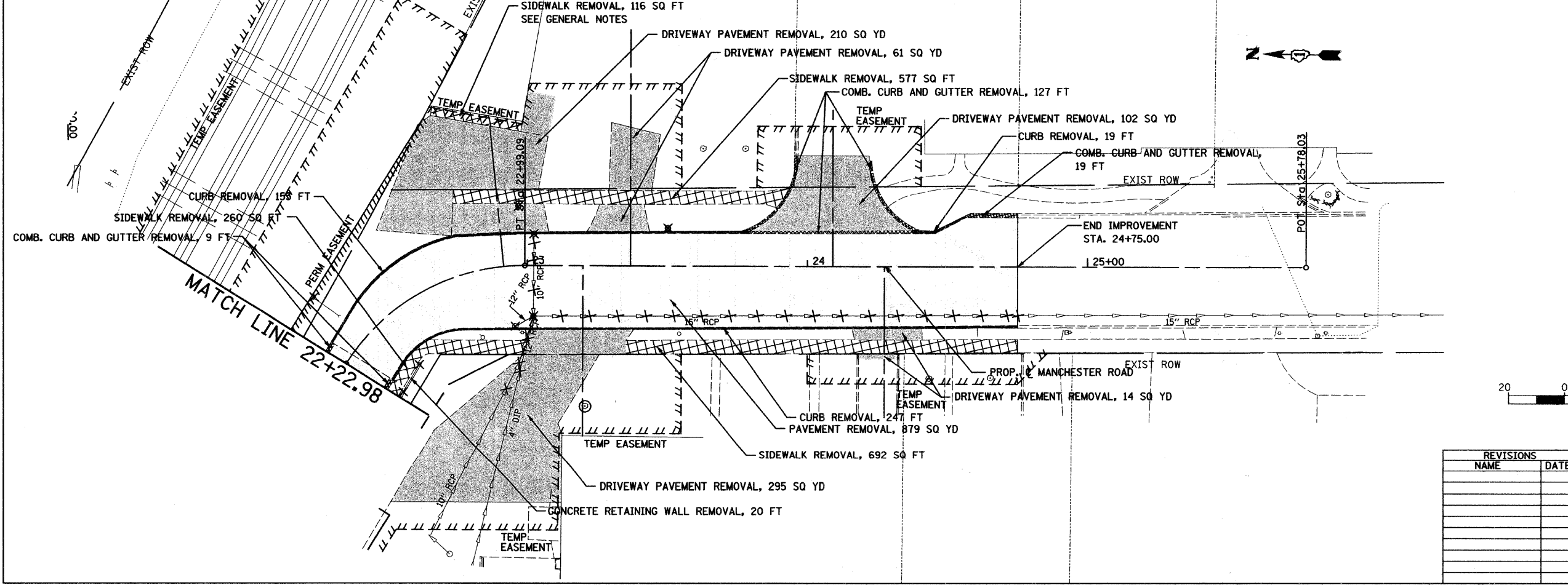


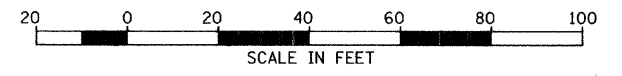
- NOTES:
1. ALL QUANTITIES SHOWN FOR MANCHESTER RD. ARE FROM STA. 16+50.00 TO STA. 22+22.98
 2. ALL QUANTITIES SHOWN FOR WESLEY ST. ARE FROM STA. 40+00.00 TO STA. 41+24.99



LEGEND

- PAVEMENT REMOVAL
- DRIVEWAY PAVEMENT REMOVAL
- COMBINATION CURB AND GUTTER REMOVAL
- CURB REMOVAL
- SIDEWALK REMOVAL
- REMOVE MANHOLE
- REMOVE CATCH BASIN
- REMOVE POLE (BY OTHERS)
- REMOVE TREE
- TREE PROTECTION (TEMPORARY FENCE)
- FENCE REMOVAL
- STORM SEWER REMOVAL

- NOTES:
1. ALL QUANTITIES SHOWN FOR MANCHESTER RD. ARE FROM STA. 22+22.98 TO STA. 24+75.00



SHEET 2 OF 4

REVISIONS	
NAME	DATE

CITY OF WHEATON
**MANCHESTER ROAD / WESLEY STREET
 OVER UNION PACIFIC RAILROAD**
 REMOVAL PLAN
 SCALE: VERT. 1" = 20'
 HORIZ. 1" = 20'
 DATE 6/4/2008
 DRAWN BY BJW
 CHECKED BY JLC