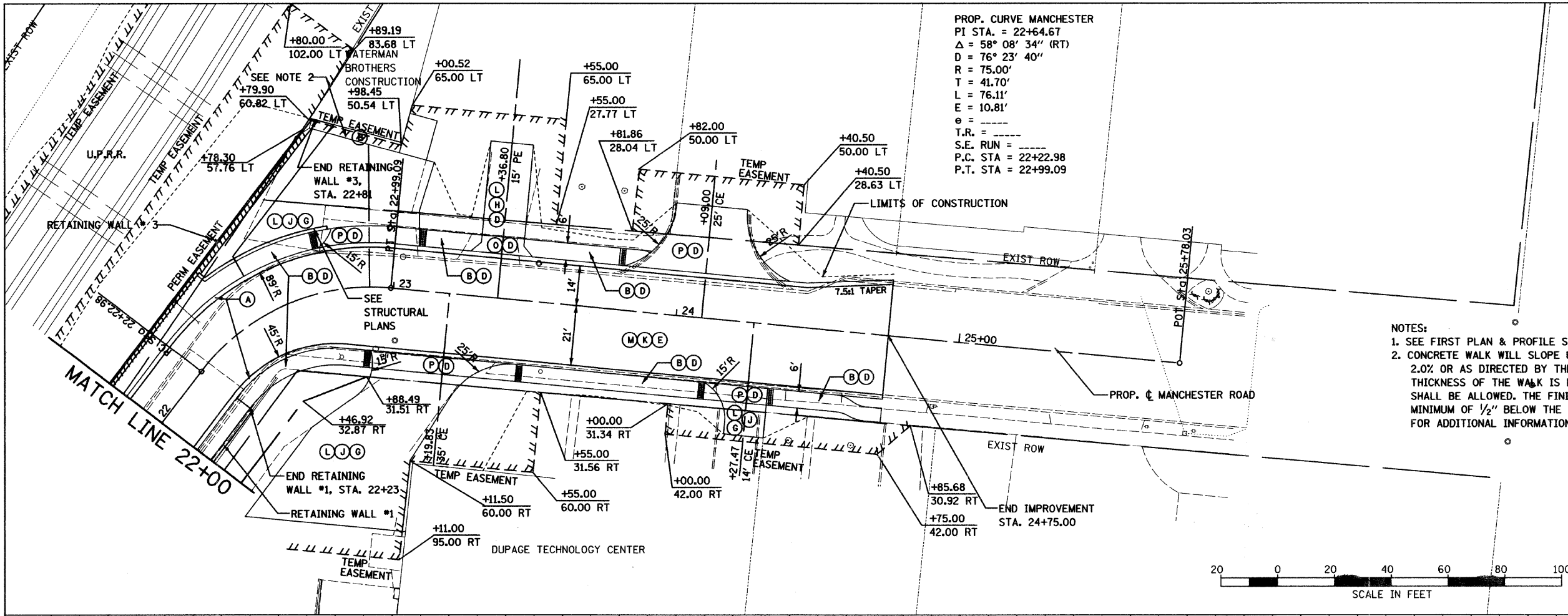
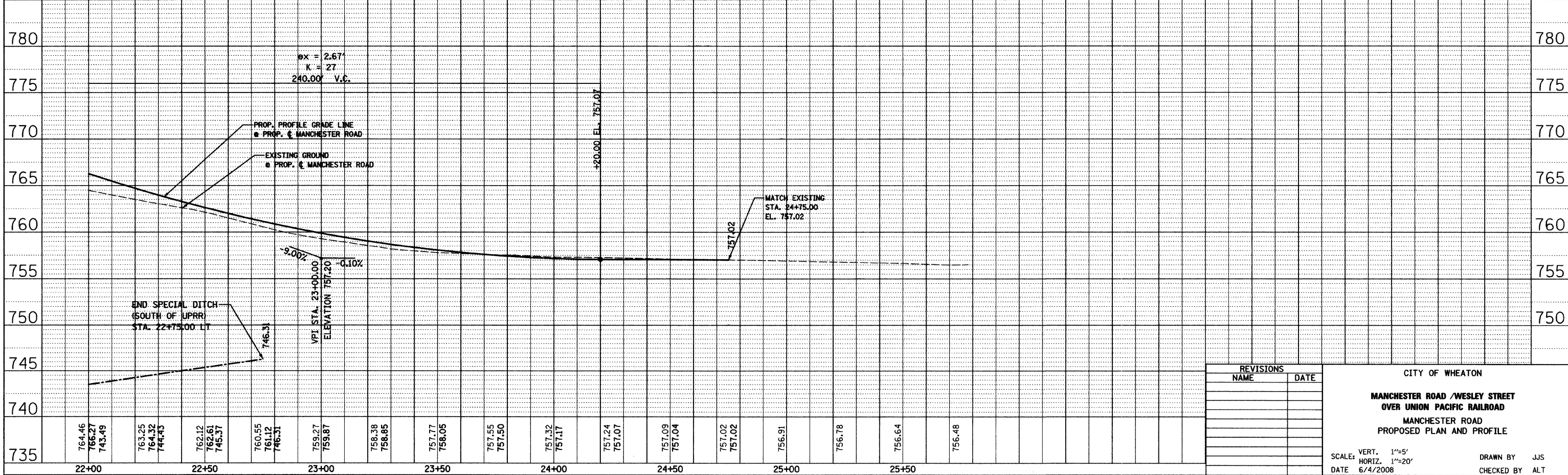
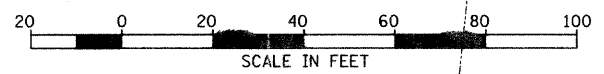


F.A.U. RTE.	SECTION	COUNTY	TOTAL SHEETS	SHEET NO.
97-00084-00-BR	DUPAGE	DUPAGE	241	53
STA. 22+00		TO STA. 24+75		
FED. ROAD DIST. NO.		ILLINOIS FED. AID PROJECT		
CONTRACT NO. 83908				

PROP. CURVE MANCHESTER
 PI STA. = 22+64.67
 $\Delta = 58^\circ 08' 34''$ (RT)
 $D = 76^\circ 23' 40''$
 $R = 75.00'$
 $T = 41.70'$
 $L = 76.11'$
 $E = 10.81'$
 $e =$
 $T.R. =$
 $S.E. RUN =$
 $P.C. STA = 22+22.98$
 $P.T. STA = 22+99.09$



- NOTES:
- SEE FIRST PLAN & PROFILE SHEET FOR PAY CODE LEGEND
 - CONCRETE WALK WILL SLOPE UPWARDS AT A MINIMUM OF 1.5% AND A MAXIMUM OF 2.0% OR AS DIRECTED BY THE ENGINEER FROM THE EDGE OF PARKING LOT PAVEMENT. THICKNESS OF THE WALK IS EXPECTED TO EXCEED 4" AND NO ADDITIONAL COMPENSATION SHALL BE ALLOWED. THE FINISHED ELEVATION OF THE CONCRETE WALK SHALL BE A MINIMUM OF 1/2" BELOW THE DOOR ELEVATION. SEE GENERAL NOTES AND GRADING PLAN FOR ADDITIONAL INFORMATION.



REVISIONS	
NAME	DATE

CITY OF WHEATON
**MANCHESTER ROAD /WESLEY STREET
 OVER UNION PACIFIC RAILROAD**
 MANCHESTER ROAD
 PROPOSED PLAN AND PROFILE

SCALE: VERT. 1"=5'
 HORIZ. 1"=20'
 DATE 6/4/2008

DRAWN BY JJS
 CHECKED BY ALT

PLAN	SURVEYED	DATE
	PLOTTED	
	CHECKED	
	BY	
	NO. OF WAYS CHECKED	
	CADD FILE NAME	

PROFILE	SURVEYED	DATE
	PLOTTED	
	CHECKED	
	BY	
	NO. OF WAYS CHECKED	
	STRUCTURE NOTATIONS CHRD	