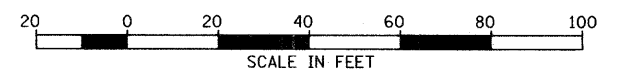
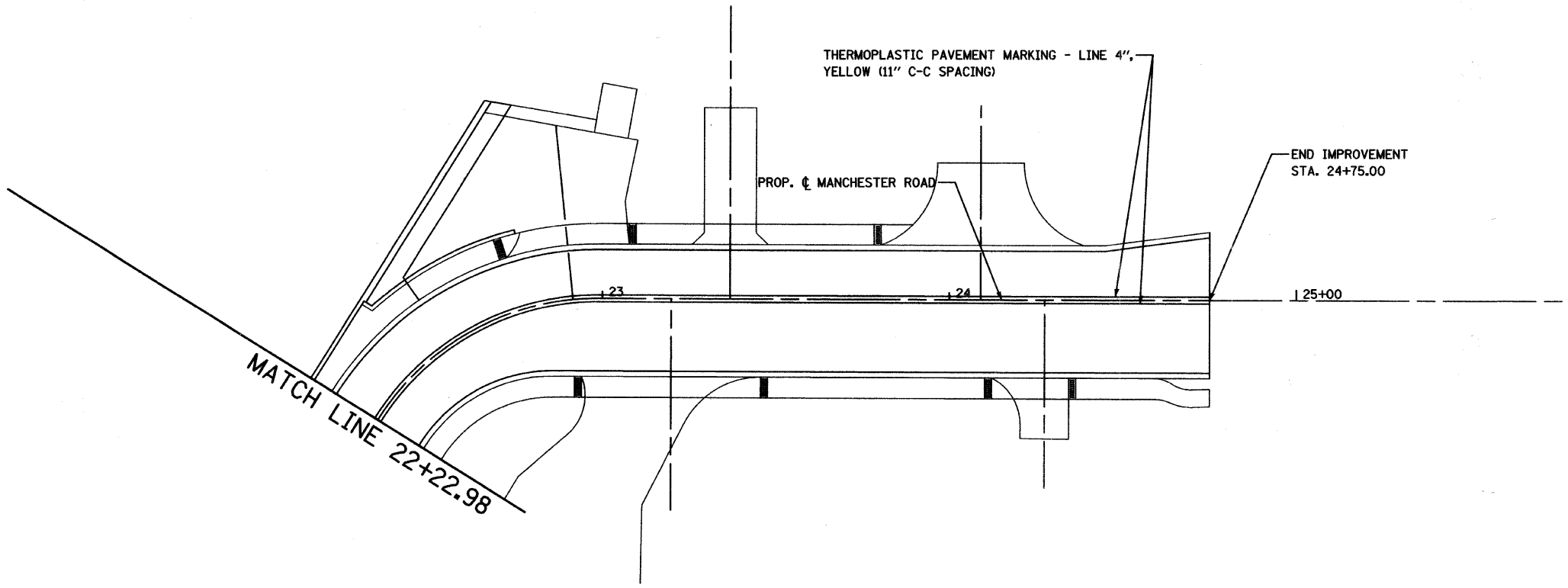
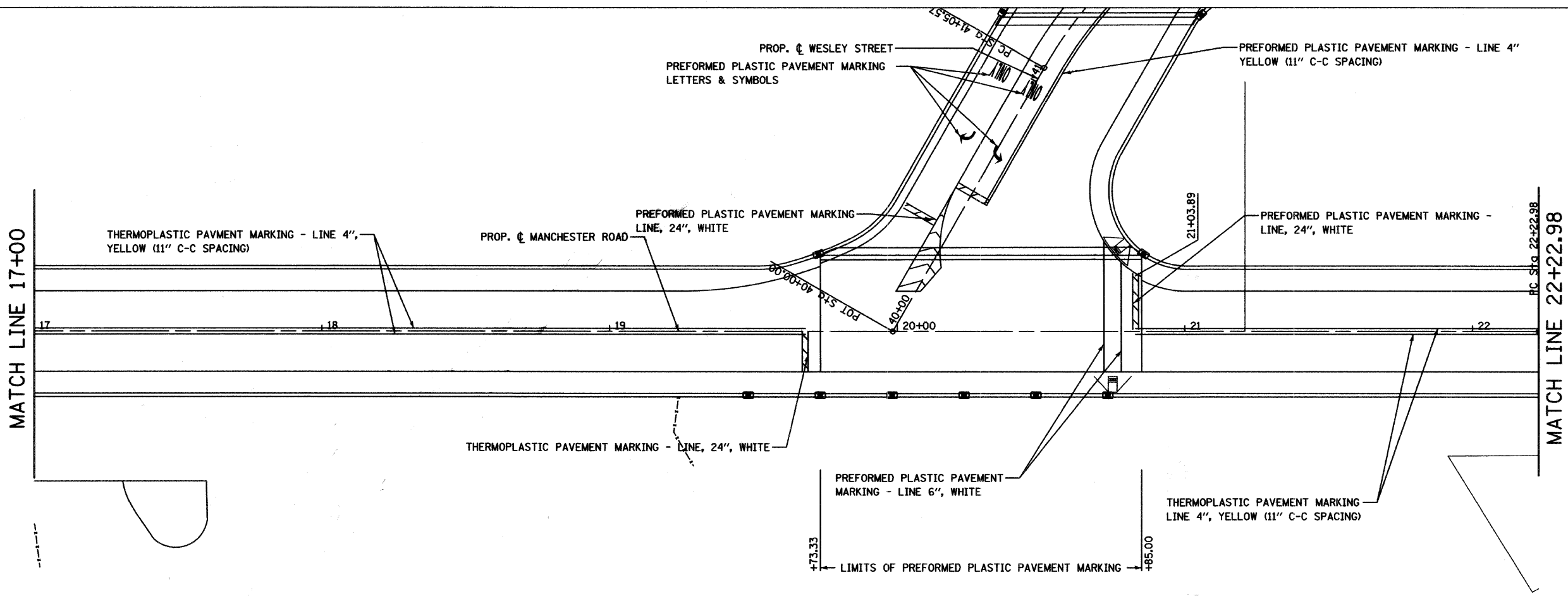
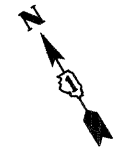


F.A.U. RTE.	SECTION	COUNTY	TOTAL SHEETS	SHEET NO.
	97-00084-00-BR	DU PAGE	241	86
STA. 17+00		TO STA. 24+75.00		
FED. ROAD DIST. NO. 1 ILLINOIS		FED. AID PROJECT		
CONTRACT NO. 83908				

NOTE:
FOR PAVEMENT MARKING ON WESLEY STREET,
SEE NEXT SHEET



SHEET 2 OF 4

REVISIONS	
NAME	DATE

CITY OF WHEATON
**MANCHESTER ROAD / WESLEY STREET
OVER UNION PACIFIC RAILROAD**
PAVEMENT MARKING PLAN
SCALE: VERT. 1" = 20'
HORIZ. 1" = 20'
DATE 6/4/2008
DRAWN BY MBT
CHECKED BY ALT