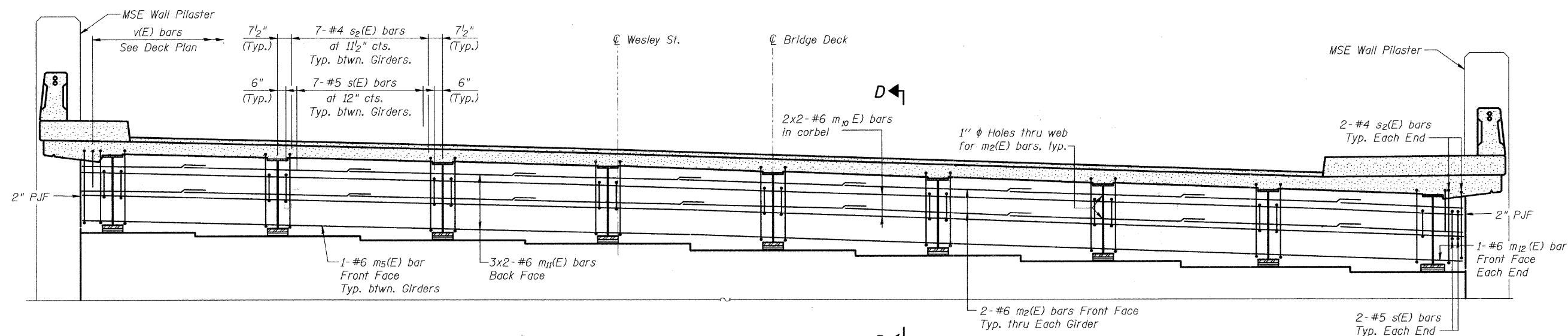


FISCAL YEAR	COUNTY	COUNTY HIGHWAY	TOTAL SHEETS	SHEET NO.
2007	DUPAGE	•	241	113

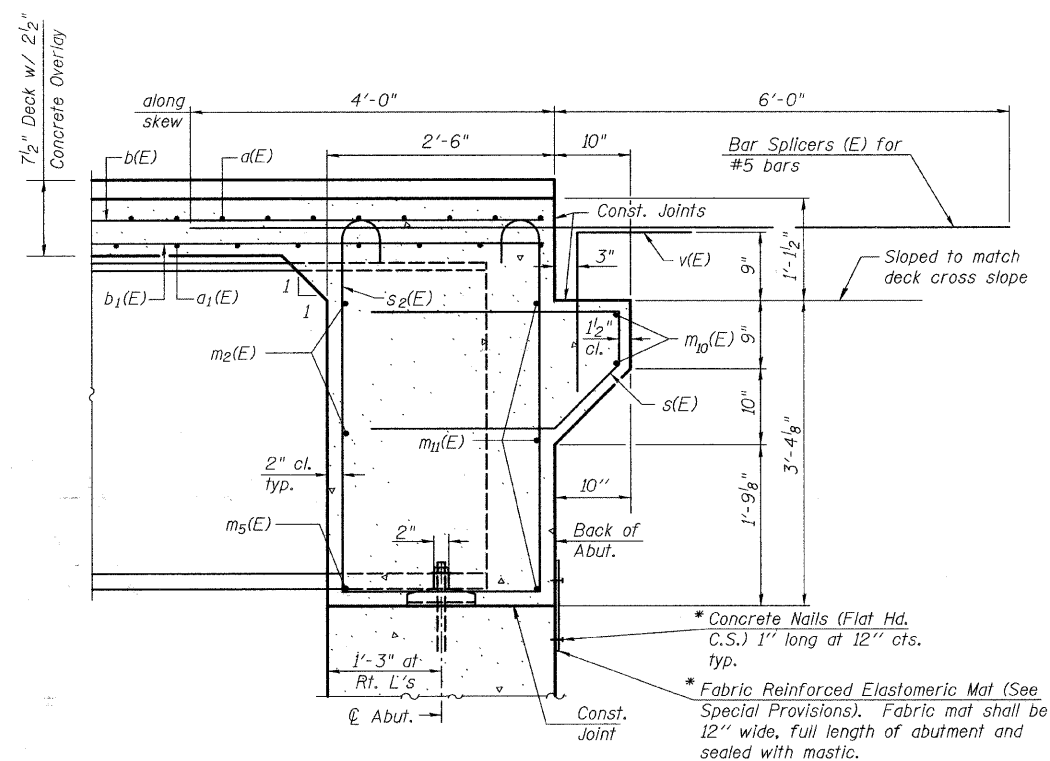
CONTRACT NUMBER 83908

SECTION 97-00084-00-BR

• FAU 3549/ FAU 1432



DIAPHRAGM SECTION AT N. ABUTMENT
(Along ϕ Bearing) (Looking North)



SECTION D-D

Dimensions at right angles to abutment, except as shown.
* Cost included with Concrete Superstructure.

MIN. BAR LAP
#6 bar = 2'-9"

Notes:
Reinforcement bars in diaphragm are billed with superstructure on Sht. S-8.
Concrete in diaphragm is included with Concrete Superstructure on Sht. S-8.
For details of bars s(E), s₁(E), s₂(E) and v(E) see Sht. S-8.
The s(E), s₁(E) and s₂(E) bars shall be placed parallel to the girders. Spacing for these bars shall be at right angles to the girders.
For bearing details see Sht. S-17.

CITY OF WHEATON		
MANCHESTER ROAD/ WESLEY STREET OVER UNION PACIFIC RAILROAD		
DIAPHRAGM DETAILS		
DRAWN	JM	SHEET NO.
CHECKED	VEVS	S-10
APPROVED	BSK	
DATE	06/04/2008	
SCALE	NONE	

HDR
HDR Engineering, Inc.