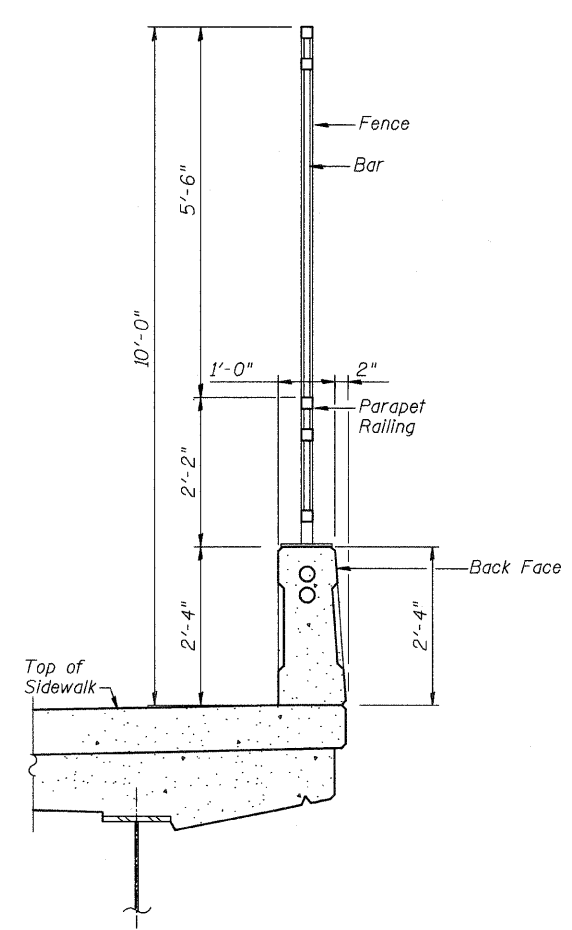
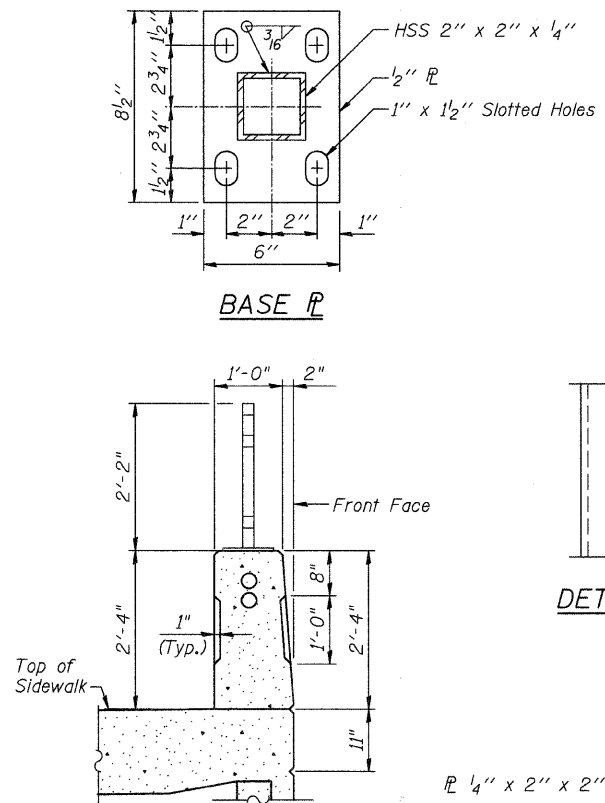


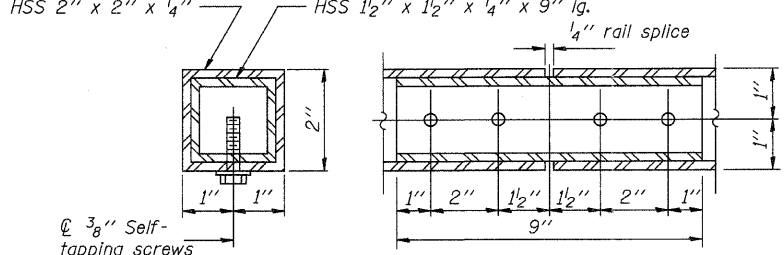
FISCAL YEAR	COUNTY	COUNTY HIGHWAY	TOTAL SHEETS	SHEET NO.
2007	DUPAGE	•	241	114
CONTRACT NUMBER 83908				
SECTION 97-00084-00-BR				
• FAU 3549/ FAU 1432				



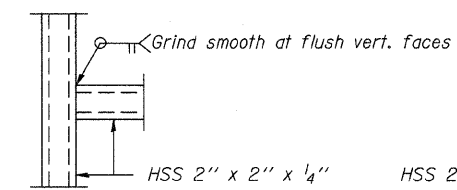
SECTION THRU SIDEWALK



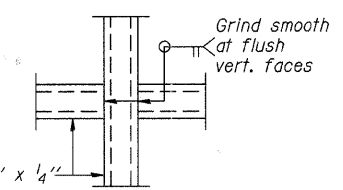
SECTION THRU MSE WALL



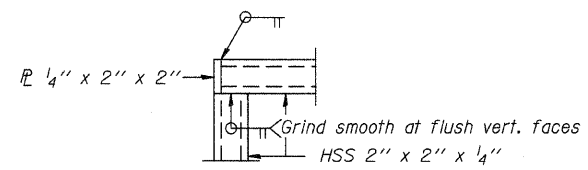
RAIL SPLICE



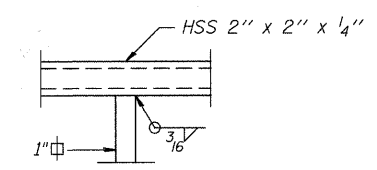
DETAIL A



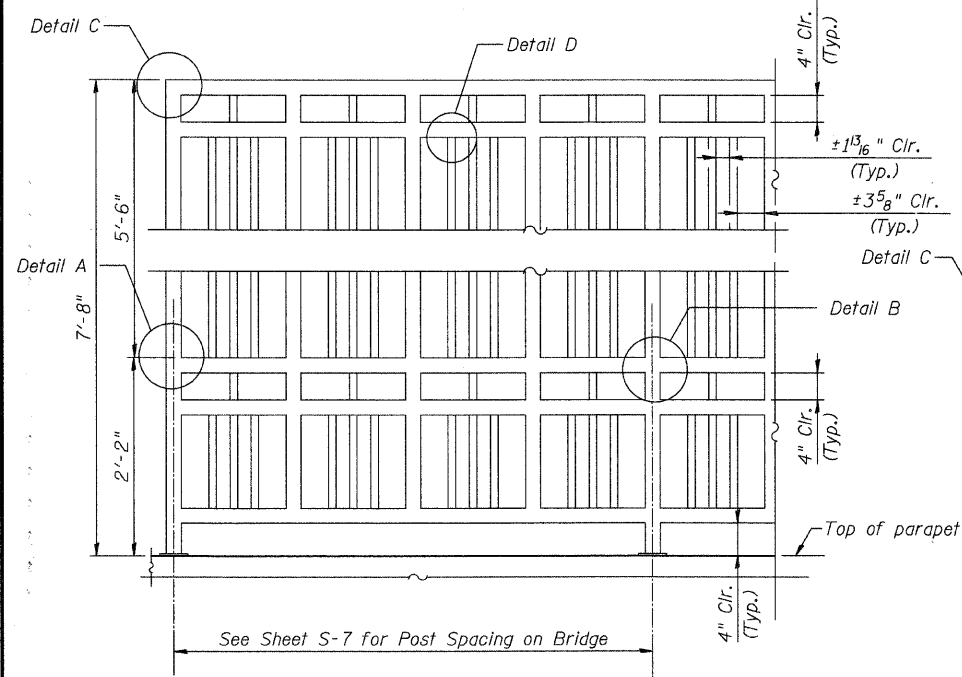
DETAIL B



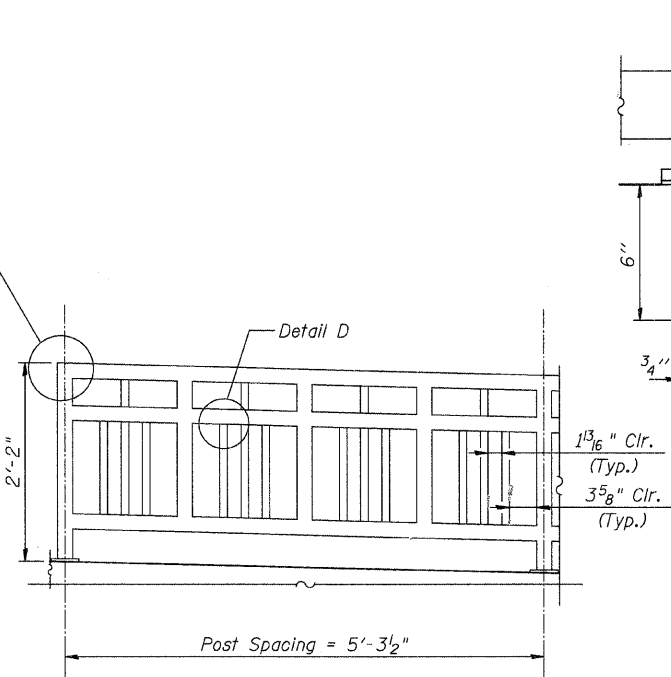
DETAIL C



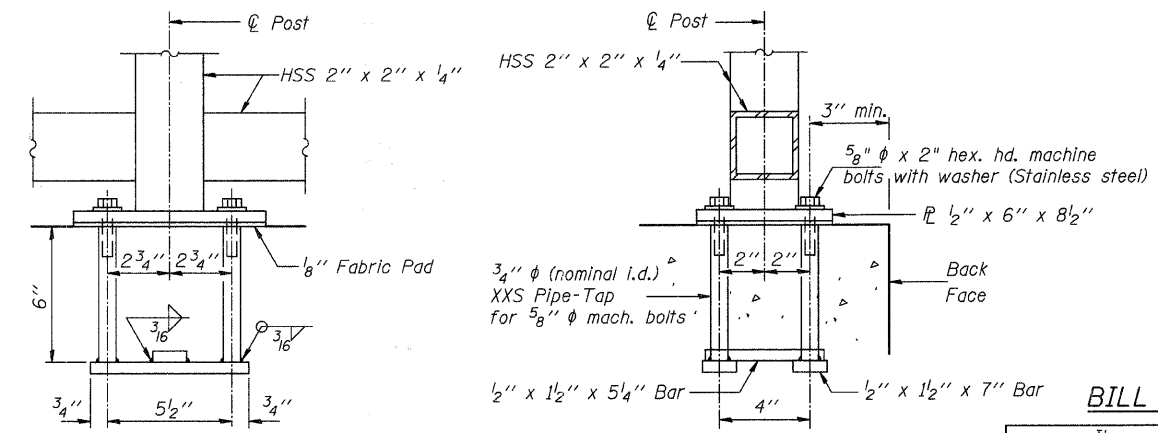
DETAIL D



BRIDGE FENCE RAILING ELEVATION



MSE WALL PARAPET RAILING ELEVATION



ANCHOR BOLT DETAILS

In lieu of the cast-in-place anchor device shown, the Contractor has the option of drilling and epoxy grouting 5/8" φ anchor rods. Embedment shall be according to the manufacturer's specifications.

NOTES

- Railing shall be according to Section 509 of the Standard Specifications, except as noted, and will be paid for at the Contract Unit Price per foot for Parapet Railing or Bridge Fence Railing, Parapet Mounted.
- Hollow structural sections shall conform to the requirements of ASTM designation A 500, Grade B, structural steel tubing.
- All other steel shapes and plates shall conform to the requirements of AASHTO M 270 Grade 36.
- If the option of drilling and epoxy grouting the anchor rods is chosen, the Contractor shall use the capsule or the adhesive cartridge type anchor rods that have been previously tested and given a prior approval by the Department. The Contractor shall install these anchor rods in pre-drilled holes according to the manufacturer's recommendations and procedures. The capsule or the adhesive cartridge shall be sealed with pre-measured amounts of the adhesive chemical.
- Space reinforcement to miss anchor rods.
- Railing is to be Galvanized and Painted. All posts, railing, splices, anchor devices, and bent plates shall be galvanized after shop fabrication according to AASHTO M 111 and ASTM A 385. All bolts, nuts, washers, and anchor rods shall be galvanized according to AASHTO M 232 except stainless steel bolts as noted. Vent holes for galvanizing shall be placed in the posts and rails at locations that will not allow the accumulation of moisture in the members.
- All post, railing, splices, anchor devices, and bent plates shall be painted using the appropriate paint system for painting over Galvanized Structural Steel according to the Special Provisions.

BILL OF MATERIAL

Item	Unit	Quantity
Bridge Fence Parapet Mounted	Foot	197
Parapet Railing	Foot	1,740

CITY OF WHEATON
 MANCHESTER ROAD/ WESLEY STREET
 OVER UNION PACIFIC RAILROAD
 PARAPET RAILING AND
 FENCE DETAILS

DRAWN	JM	SHEET NO.
CHECKED	VEVS	
APPROVED	BSK	
DATE	06/04/2008	
SCALE	NONE	

S-11

HDR
 HDR Engineering, Inc.