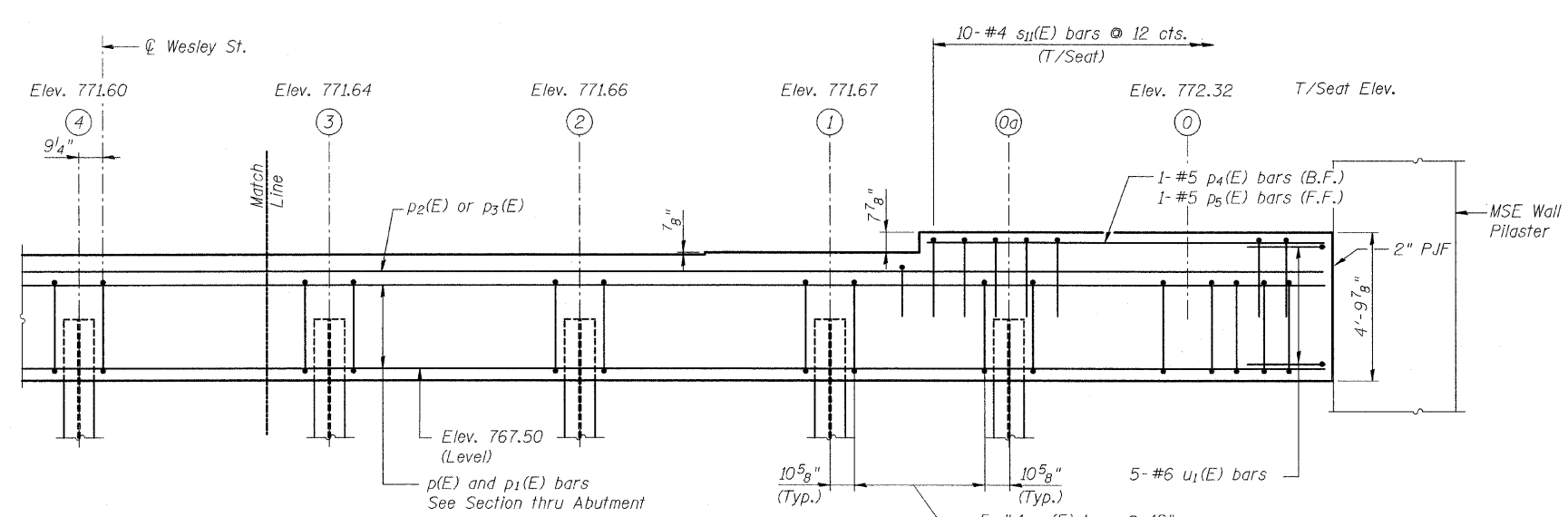


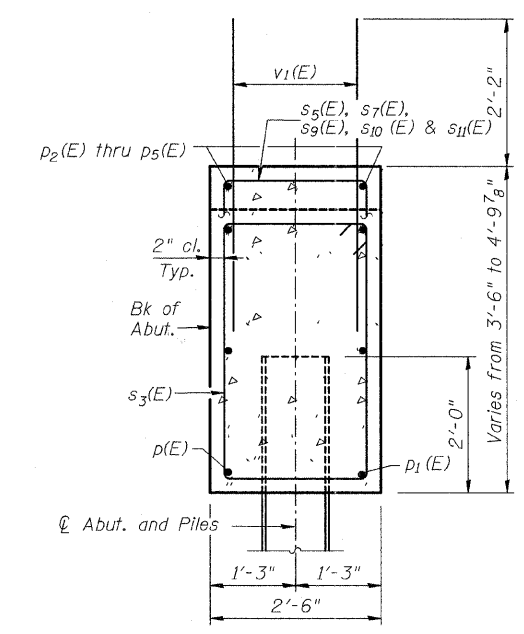
BILL OF MATERIAL

Bar	No.	Size	Length	Shape
p(E)	9	#8	38'-6"	—
p ₁ (E)	9	#8	36'-6"	—
p ₂ (E)	2	#5	31'-0"	—
p ₃ (E)	2	#5	28'-11"	—
p ₄ (E)	1	#5	13'-0"	—
p ₅ (E)	1	#5	8'-9"	—
s ₃ (E)	100	#4	11'-1"	□
s ₄ (E)	2	#4	8'-7"	□
s ₅ (E)	48	#4	5'-7"	□
s ₆ (E)	1	#4	10'-3"	□
s ₇ (E)	1	#4	4'-2"	□
s ₈ (E)	1	#4	9'-5"	□
s ₉ (E)	1	#4	3'-9"	□
s ₁₀ (E)	1	#4	3'-4"	□
s ₁₁ (E)	10	#4	7'-5"	□
u(E)	4	#6	6'-7"	⌋
u ₁ (E)	5	#6	8'-5"	⌋
v ₁ (E)	197	#5	4'-4"	—
Concrete Structures	Cu. Yd.	40.8		
Reinforcement Bars, Epoxy Coated	Pound	3,950		

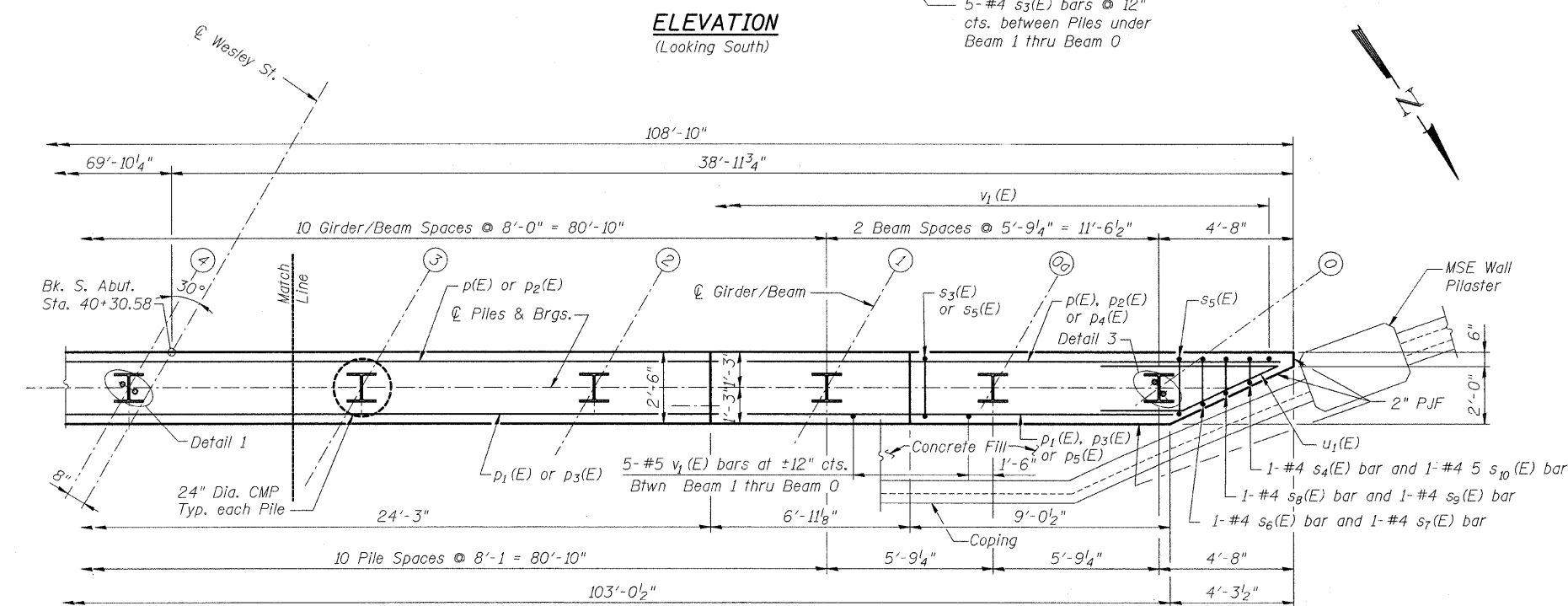
Bars indicated thus 1 x 2-#5 etc. indicates 1 line of bars with 2 lengths per line.



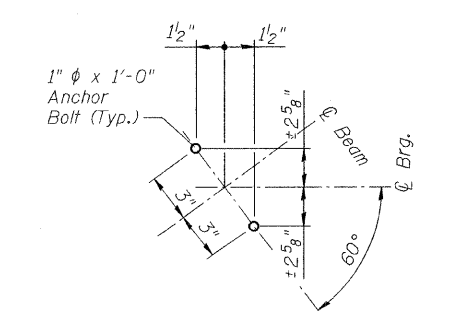
ELEVATION
(Looking South)



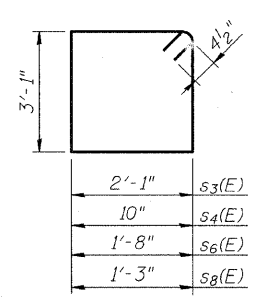
TYP. ABUTMENT SECTION



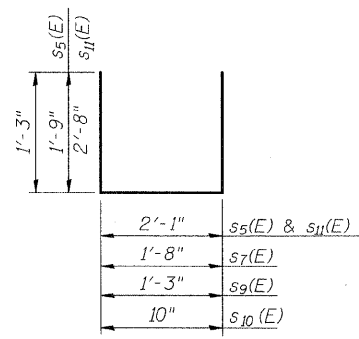
PLAN



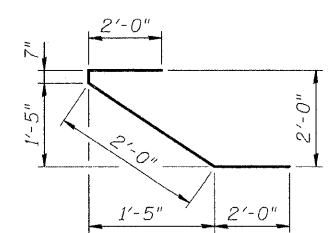
DETAIL 3
(Beam 0)



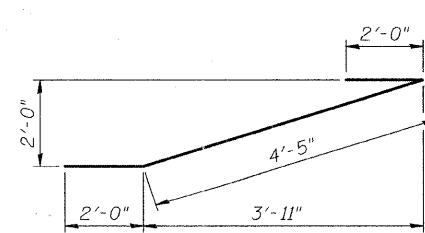
BARS s₃(E), s₄(E), s₆(E) AND s₈(E)



BARS s₅(E), s₇(E), s₉(E), s₁₀(E) AND s₁₁(E)



BARS u(E)



BARS u₁(E)

CITY OF WHEATON	
MANCHESTER ROAD/ WESLEY STREET OVER UNION PACIFIC RAILROAD	
S. ABUTMENT DETAILS	
DRAWN	JM
CHECKED	VEVS
APPROVED	BSK
DATE	06/04/2008
SCALE	NONE
SHEET NO. S-20	

