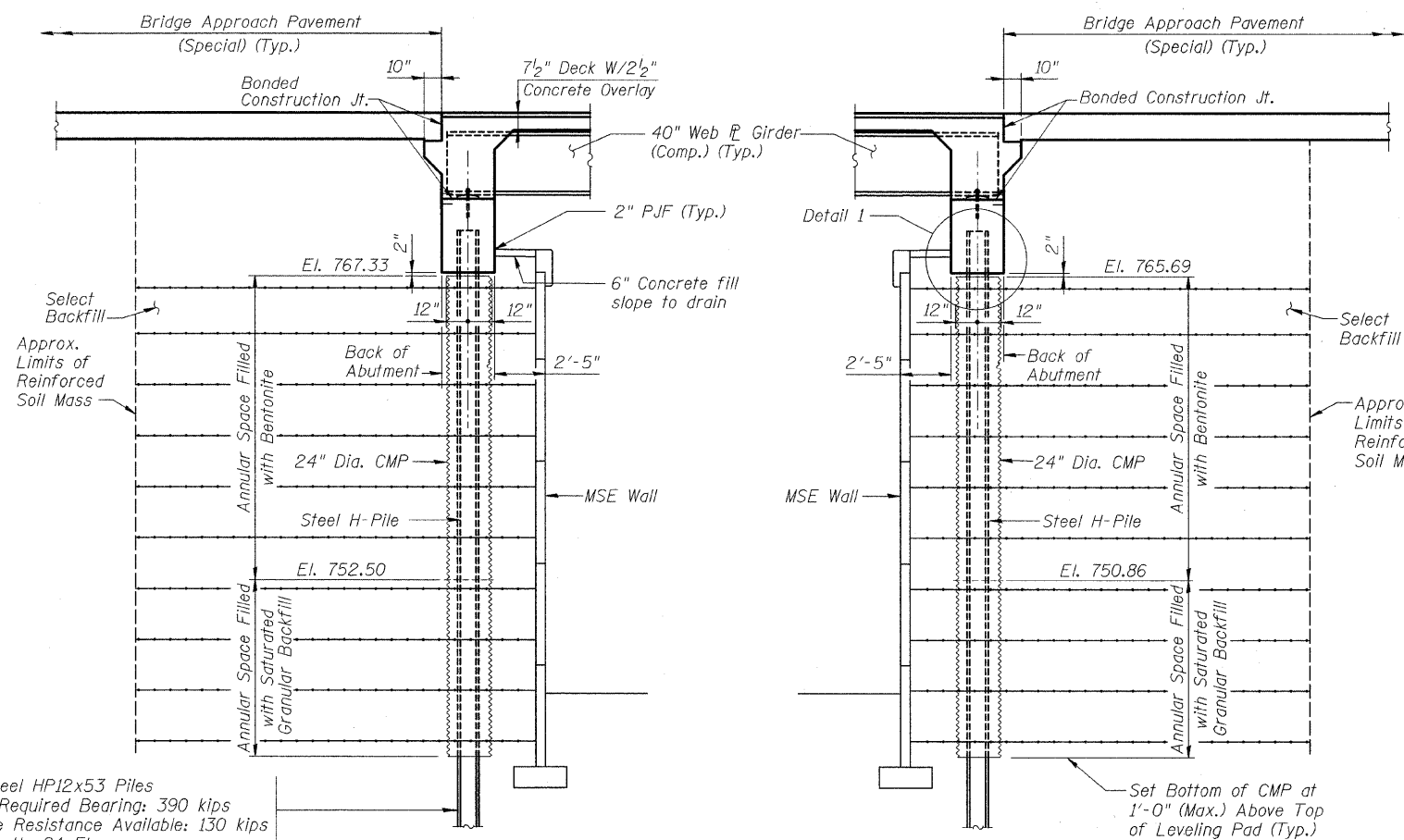


FISCAL YEAR	COUNTY	COUNTY HIGHWAY	TOTAL SHEETS	SHEET NO.
2007	DUPAGE	*	241	125
CONTRACT NUMBER 83908				
SECTION 97-00084-00-BR				

• FAU 3549/ FAU 1432

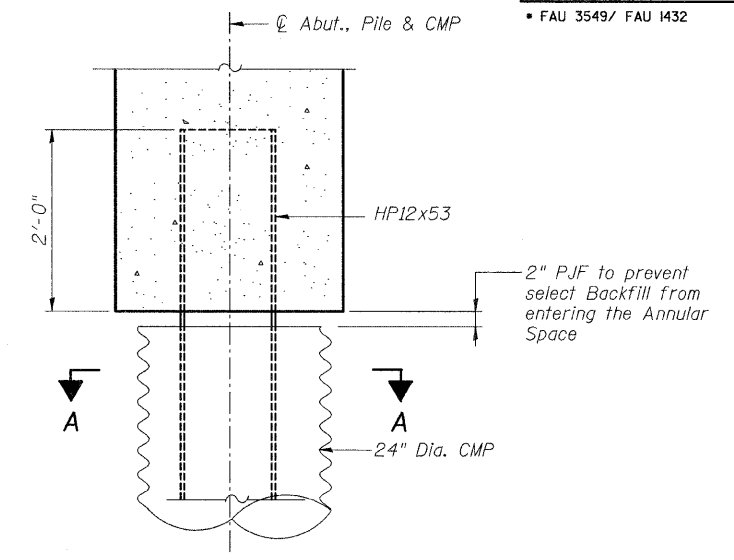


Type: Steel HP12x53 Piles
 Nominal Required Bearing: 390 kips
 Allowable Resistance Available: 130 kips
 Est. Length: 84 Ft.
 (Typ. Both Abutments)
 Test Piles: One Test Pile at South Abutment.

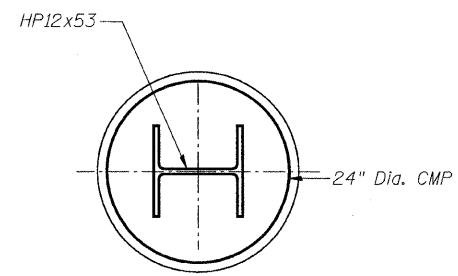
SECTION THRU INTEGRAL ABUTMENTS
 (Dimensions are @ Rt. L's)

Notes:

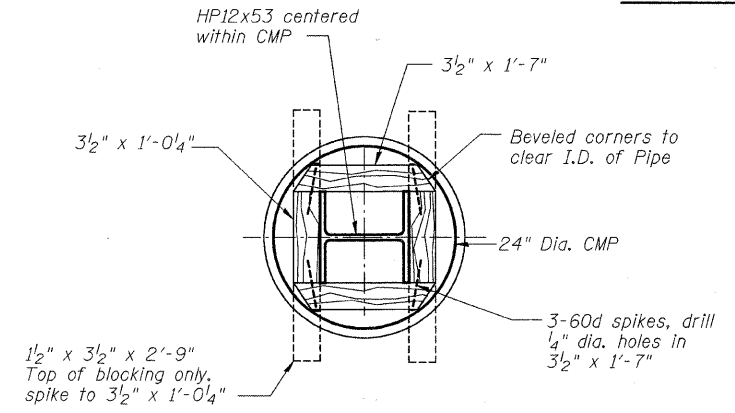
- Annular space between H-Pile and CMP to be first partially filled with saturated granular backfill to an elevation 15'-0" below the pile cap and then filled to the top of the CMP with bentonite.
- Provide a 2" gap between the bottom of the pile cap and the top of the CMP to allow independent movement of the piles within the CMP.
- Pile Casing, CMP, 24" Dia. Pay item includes all costs for furnishing and placing CMP, Blocking Material, Bentonite Fill and Saturated Granular Backfill at both abutments. Length based on CMP extending from 2" below the bottom of the abutment to the top of the MSE Wall leveling pad. The CMP shall meet the requirements for CMP entrance under 23 feet of fill. The bentonite slurry shall be as according to the Special Provisions.
- Blocking at the top of the CMP is required to maintain position of CMP casings during the MSE Wall placement.
- See Retaining Wall Drawings for soil reinforcement and panel details.
- The Steel H-piles shall be according to AASHTO M270 Grade 50.
- The test pile shall be driven to 110 percent of the Nominal Required Bearing indicated in the pile data information.



DETAIL 1



SECTION A-A



CMP BLOCKING DETAIL

One required at top and bottom of CMP. Bottom blocking shall be treated material and shall remain in place. Top blocking shall be removed prior to backfilling inside the CMP. Cost for this work shall be included in the price bid for Pile Casing, CMP, 24" Dia.

BILL OF MATERIAL

Item	Unit	Total
Furnishing Steel Piles, HP12x53	Foot	1,848
Driving Piles	Foot	1,848
Test Pile Steel, HP12x53	Each	1
Pile Casing, CMP, 24" Dia.	Foot	610

CITY OF WHEATON
 MANCHESTER ROAD/ WESLEY STREET
 OVER UNION PACIFIC RAILROAD
PILE AND CMP DETAILS

DRAWN	JM	SHEET NO.
CHECKED	VEVS	S-22
APPROVED	BSK	
DATE	06/04/2008	
SCALE	NONE	

