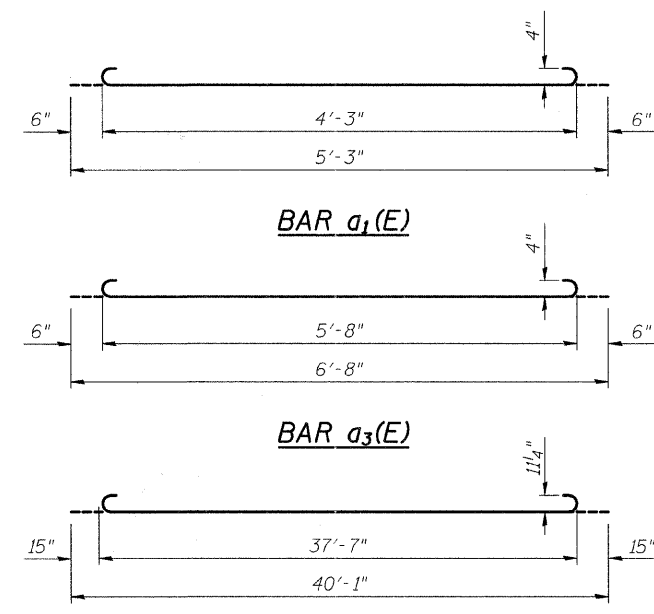
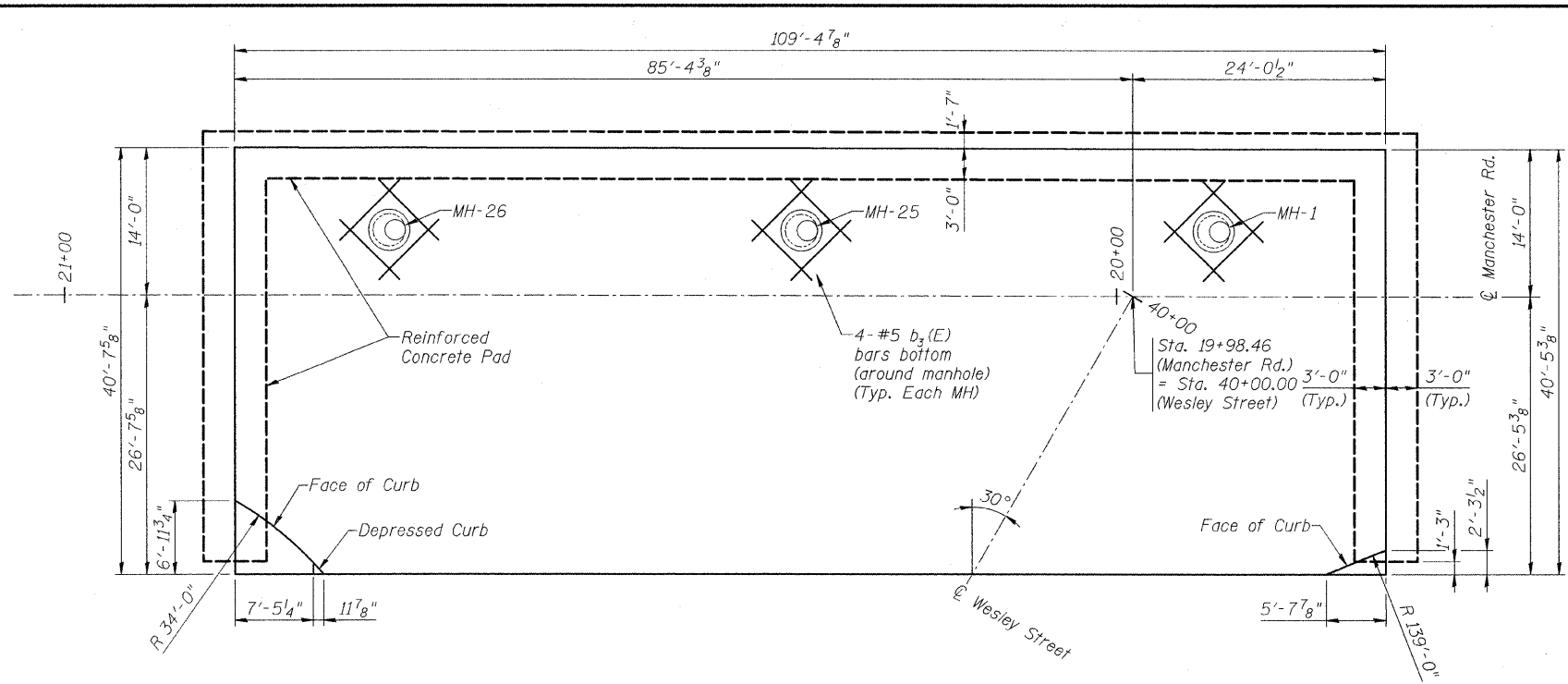
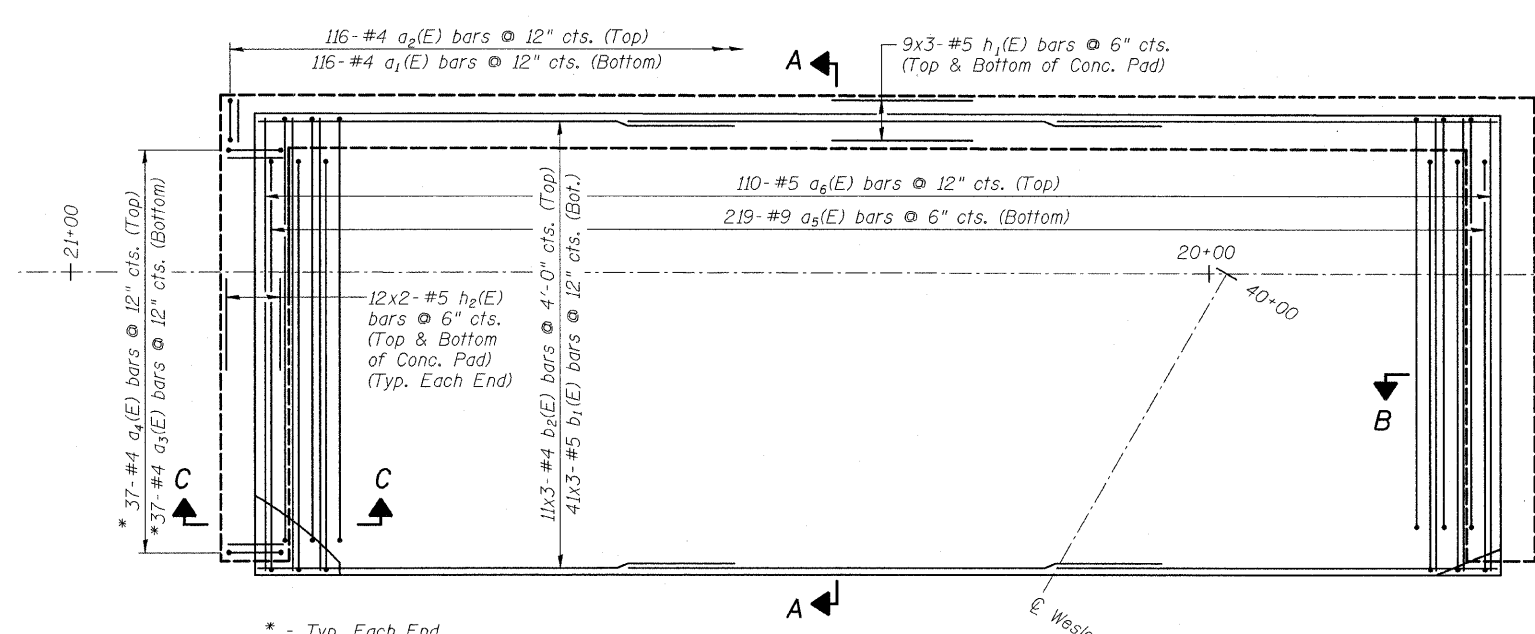


FISCAL YEAR	COUNTY	COUNTY HIGHWAY	TOTAL SHEETS	SHEET NO.
2007	DUPAGE	•	241	127
CONTRACT NUMBER 83908				
SECTION 97-00084-00-BR				
• FAU 3549/ FAU 1432				



BAR No.	No.	Size	Length	Shape
$a_1(E)$	116	#4	5'-3"	
$a_2(E)$	116	#4	4'-3"	—
$a_3(E)$	74	#4	6'-8"	
$a_4(E)$	74	#4	5'-8"	—
$a_5(E)$	219	#9	40'-1"	
$a_6(E)$	110	#5	40'-1"	—
$b_1(E)$	123	#5	37'-10"	—
$b_2(E)$	33	#4	37'-6"	—
$b_3(E)$	12	#5	8'-0"	—
$h_1(E)$	54	#5	39'-10"	—
$h_2(E)$	96	#5	21'-5"	—

Bars indicated thus 1 x 2-#5 etc. indicates 1 line of bars with 2 lengths per line.



BAR  $a_5(E)$

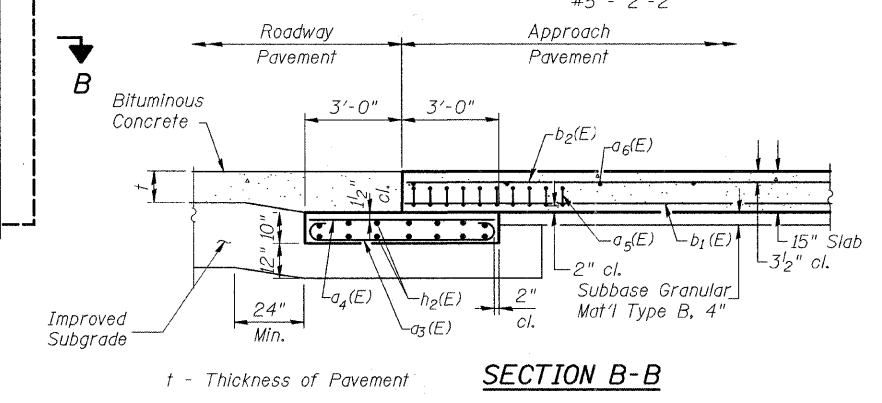
MIN. BAR LAP

- #4 - 1'-8"
- #5 - 2'-2"

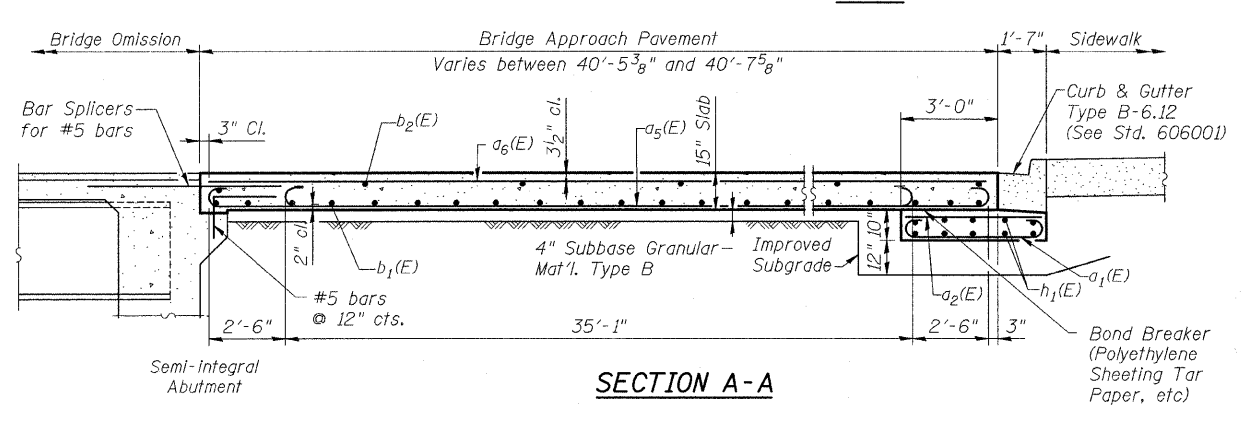
BILL OF MATERIALS

Item	Unit	Total
Bridge Approach Pavement (Special)	Sq. Yd.	493

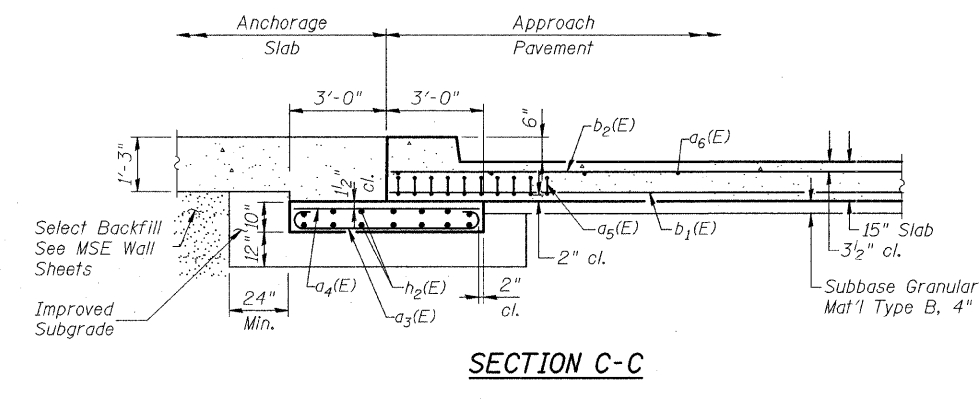
- Notes:
- Details per Standard 420401 except as noted.
  - Reinforcement bars, bar splicers, tie bars, preformed joint seals, sub-base, improved subgrade, and bond breaker will be included with Bridge Approach Pavement (Special).
  - Bridge Approach Pavement (Special) shall be paid for at the contract unit price per square yard.
  - Bridge Approach Pavement (Special) will be measured for payment in place and the area computed in square yards. The length will be measured along the centerline of the surface of the roadway. The width will be the width of pavement as shown on the plans.
  - In computing the area for pavement for Bridge Approach Pavement (Special), a deduction will be made for the area displaced by the inlet.



SECTION B-B



SECTION A-A



SECTION C-C

CITY OF WHEATON  
 MANCHESTER ROAD/ WESLEY STREET  
 OVER UNION PACIFIC RAILROAD  
**S. BRIDGE APPROACH PAVEMENT**

DRAWN	JM	SHEET NO.
CHECKED	VEVS	<b>S-24</b>
APPROVED	BSK	
DATE	06/04/2008	
SCALE	NONE	

HDR  
 HDR Engineering, Inc.