

FAU 3549/ FAU 1432
REINFORCING BARS

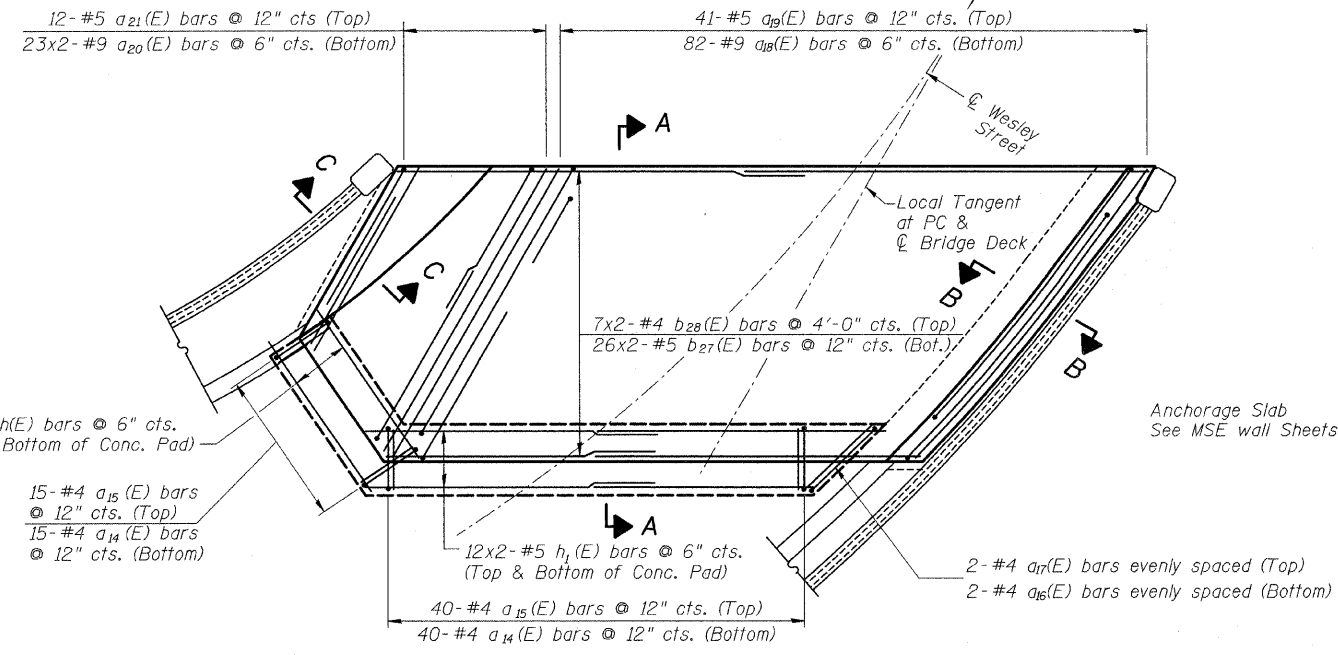
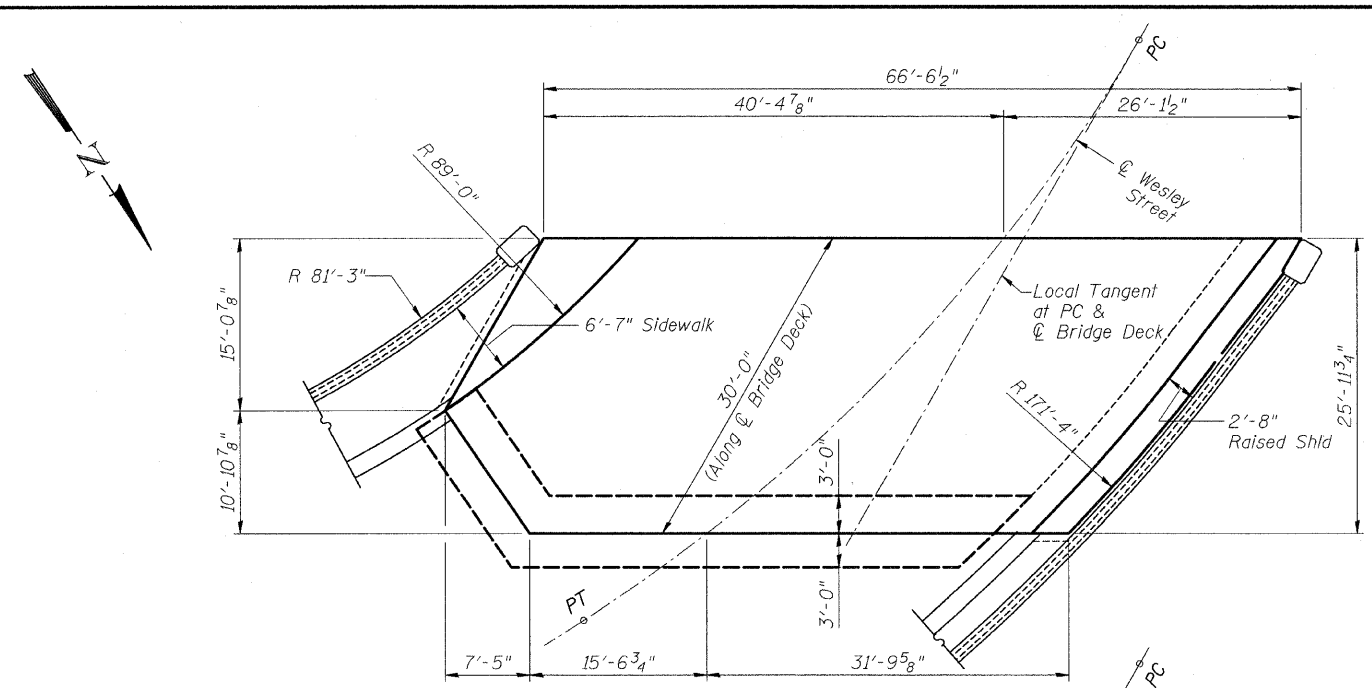
BAR	No.	Size	Length	Shape
a ₁₄ (E)	65	#4	6'-8"	U
a ₁₅ (E)	65	#4	5'-8"	—
a ₁₆ (E)	2	#4	9'-6"	U
a ₁₇ (E)	2	#4	8'-6"	—
a ₁₈ (E)	82	#9	29'-6"	U
a ₁₉ (E)	41	#5	29'-6"	—
a ₂₀ (E)	46	#9	18'-3"	U
a ₂₁ (E)	12	#5	28'-8"	—
b ₂₇ (E)	52	#5	34'-2"	—
b ₂₈ (E)	14	#4	33'-11"	—
h(E)	24	#5	14'-6"	—
h ₁ (E)	48	#5	23'-4"	—

Bars indicated thus 1 x 2-#5 etc. indicates 1 line of bars with 2 lengths per line.

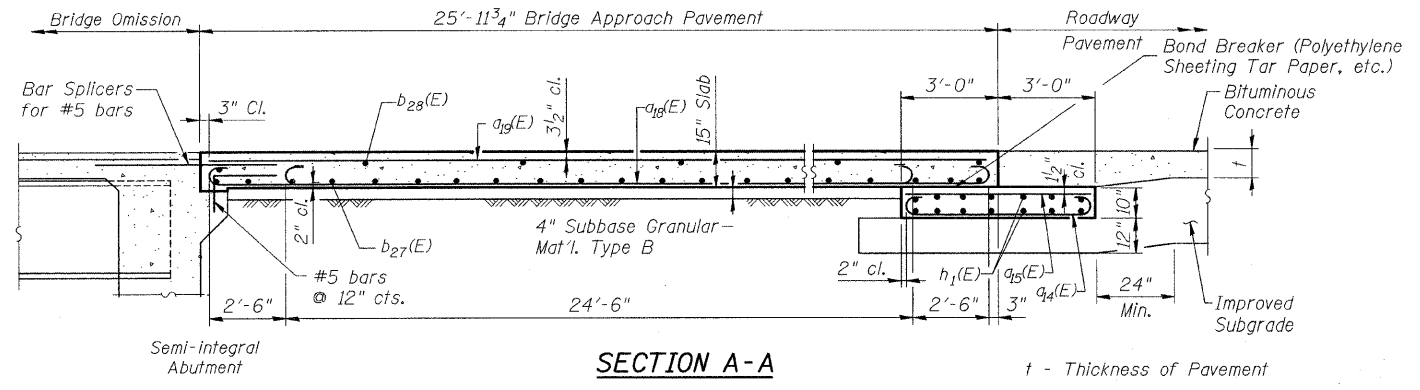
BILL OF MATERIALS

Item	Unit	Total
Bridge Approach Pavement (Special)	Sq. Yd.	178

- Notes:
- Details per Standard 420401 except as noted.
 - Reinforcement bars, bar splicers, tie bars, preformed joint seals, sub-base, improved subgrade, and bond breaker will be included with Bridge Approach Pavement (Special).
 - Bridge Approach Pavement (Special) shall be paid for at the contract unit price per square yard.
 - Bridge Approach Pavement (Special) will be measured for payment in place and the area computed in square yards. The length will be measured along the centerline of the surface of the roadway. The width will be the width of pavement as shown on the plans.
 - In computing the area for pavement for Bridge Approach Pavement (Special), a deduction will be made for the area displaced by the inlet.
 - For anchorage slab, sidewalk and raised shoulder reinforcement, see Retaining Wall Plans.

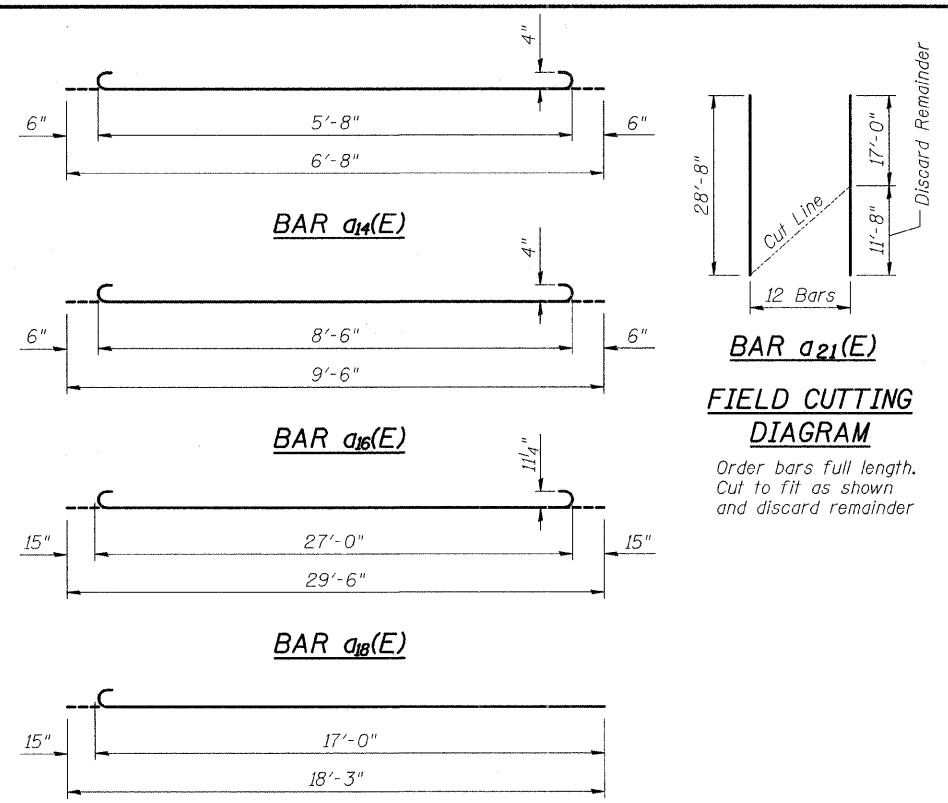


NORTH APPROACH PAVEMENT PLAN



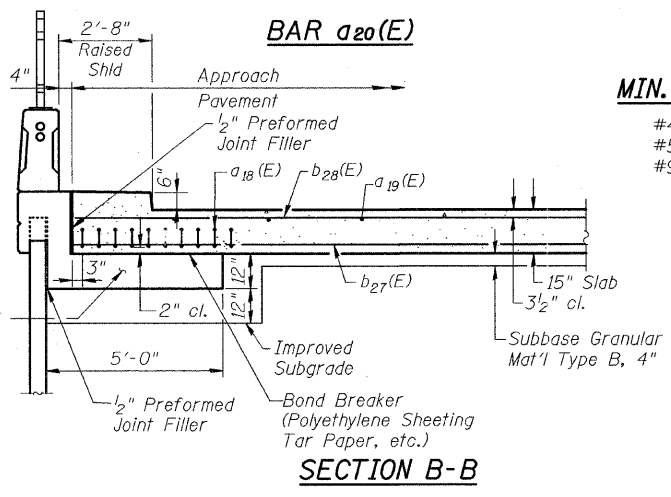
SECTION A-A

t - Thickness of Pavement

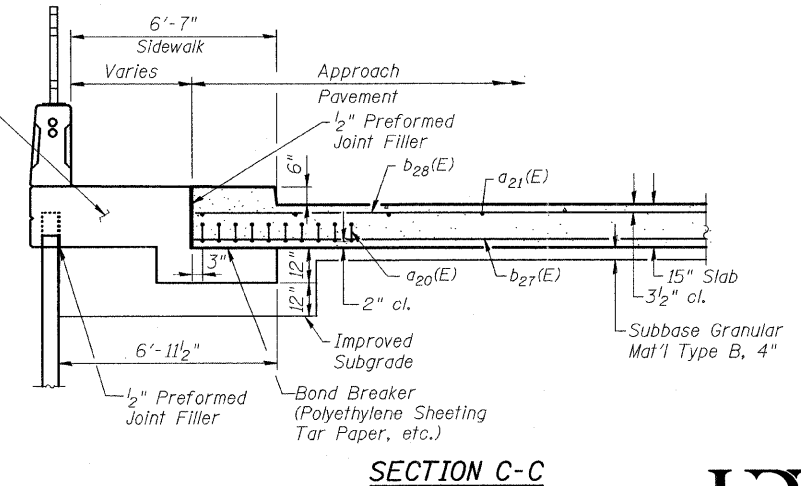


FIELD CUTTING DIAGRAM

Order bars full length. Cut to fit as shown and discard remainder



SECTION B-B



SECTION C-C



CITY OF WHEATON
MANCHESTER ROAD/ WESLEY STREET
OVER UNION PACIFIC RAILROAD
N. BRIDGE APPROACH PAVEMENT

DRAWN	JM	SHEET NO.
CHECKED	VEVS	S-25
APPROVED	BSK	
DATE	06/04/2008	
SCALE	NONE	