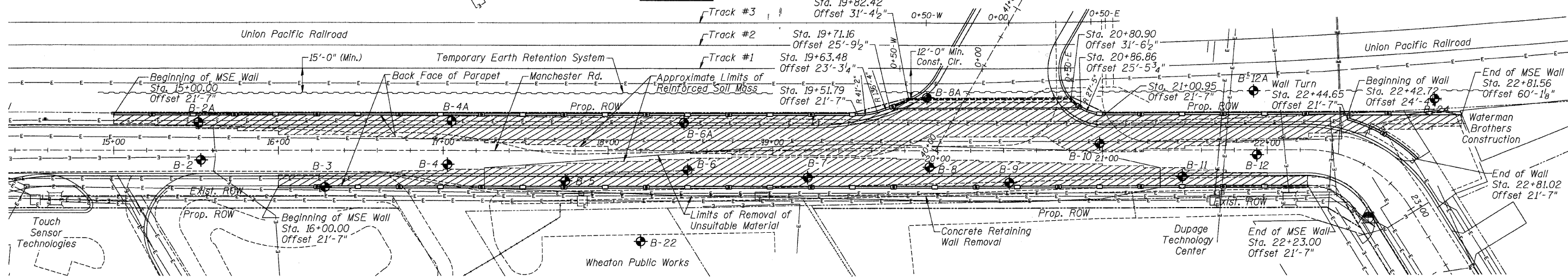
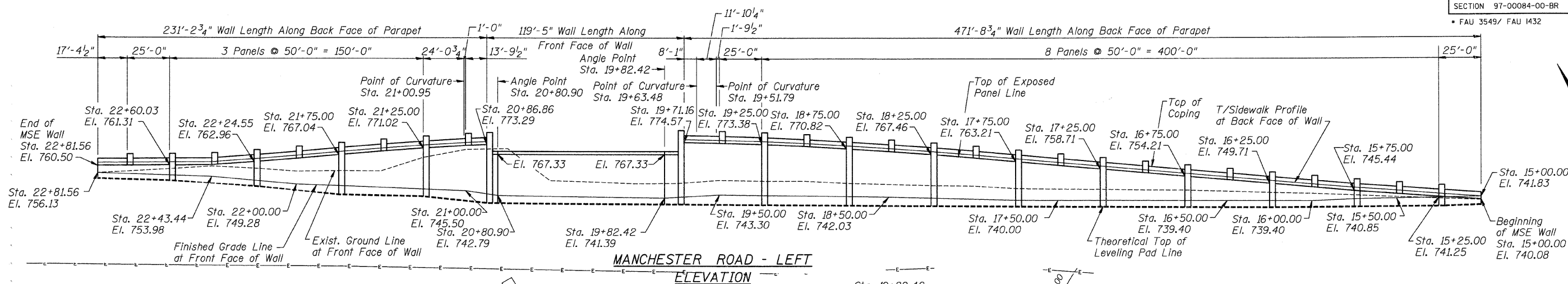
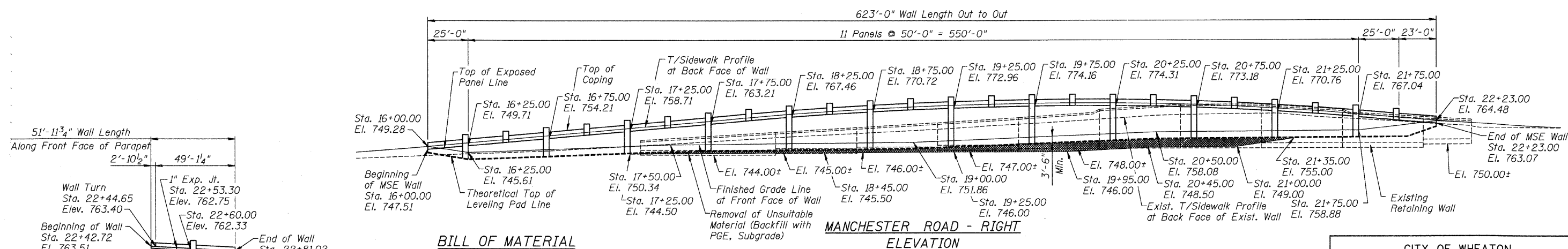


FISCAL YEAR	COUNTY	COUNTY HIGHWAY	TOTAL SHEETS	SHEET NO.
2007	DUPAGE	*	241	130
CONTRACT NUMBER 83908				
SECTION 97-00084-00-BR				

FAU 3549/ FAU 1432



PLAN



MANCHESTER ROAD - RIGHT ELEVATION

**BILL OF MATERIAL**

Item	Unit	Quantity
Mechanically Stabilized Earth Retaining Wall	Sq. Ft.	29,051
Removal and Disposal of Unsuitable Material	Cu. Yd.	1,261
Porous Granular Embankment, Subgrade	Cu. Yd.	1,261
Temporary Earth Retention System	Each	1

Notes:  
Internal Wall Stability has not been consider for this drawing.  
The Supplier/ Designer shall be responsible for all internal stability aspects of the wall design.

The Theoretical Top of Leveling Pad elevation along Manchester Road (Left) is based on future UPRR ditch elevations rather than the shown Finished Grade Line at Front Face of Wall

**LEGEND**

- Reinforced Soil Mass
- Removal of Unsuitable Material
- Soil Boring

**MANCHESTER ROAD - LEFT ELEVATION**

(Along Waterman Brothers Construction West R)

**CITY OF WHEATON**

**MANCHESTER ROAD/ WESLEY STREET  
OVER UNION PACIFIC RAILROAD  
MSE RETAINING WALL  
MANCHESTER ROAD**

DRAWN	JM	SHEET NO.
CHECKED	VEVS	
APPROVED	BSK	
DATE	06/04/2008	
SCALE	NONE	

**S-27**

**HDR**  
HDR Engineering, Inc.