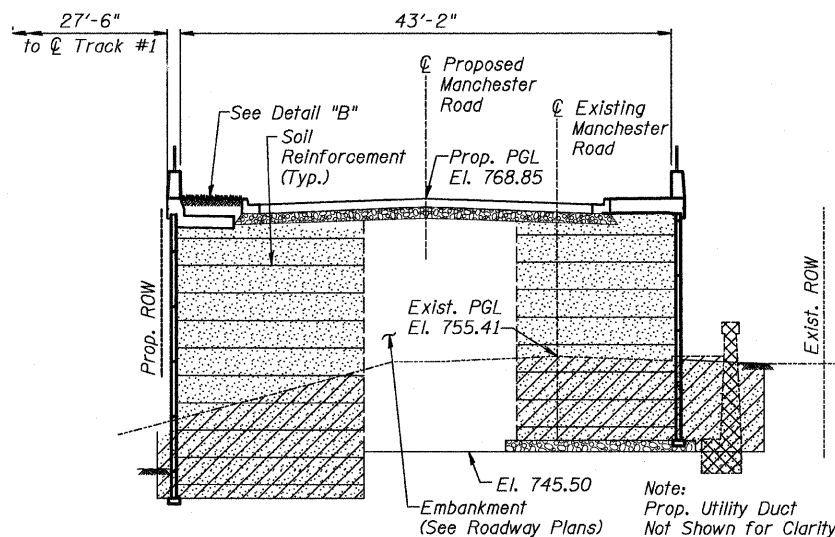
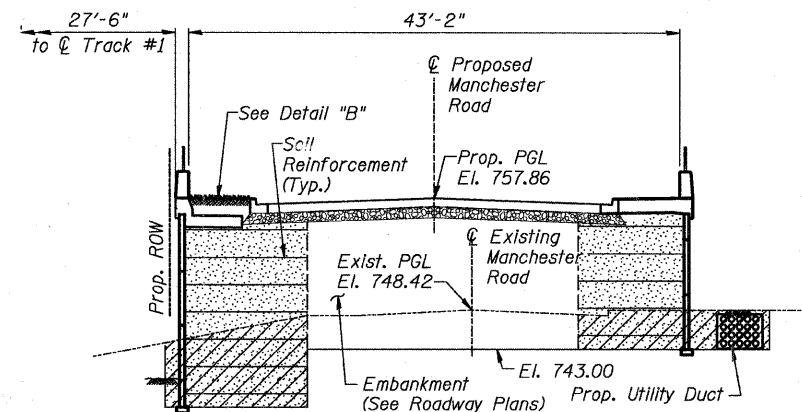


CROSS SECTION @ STA. 19+25.00



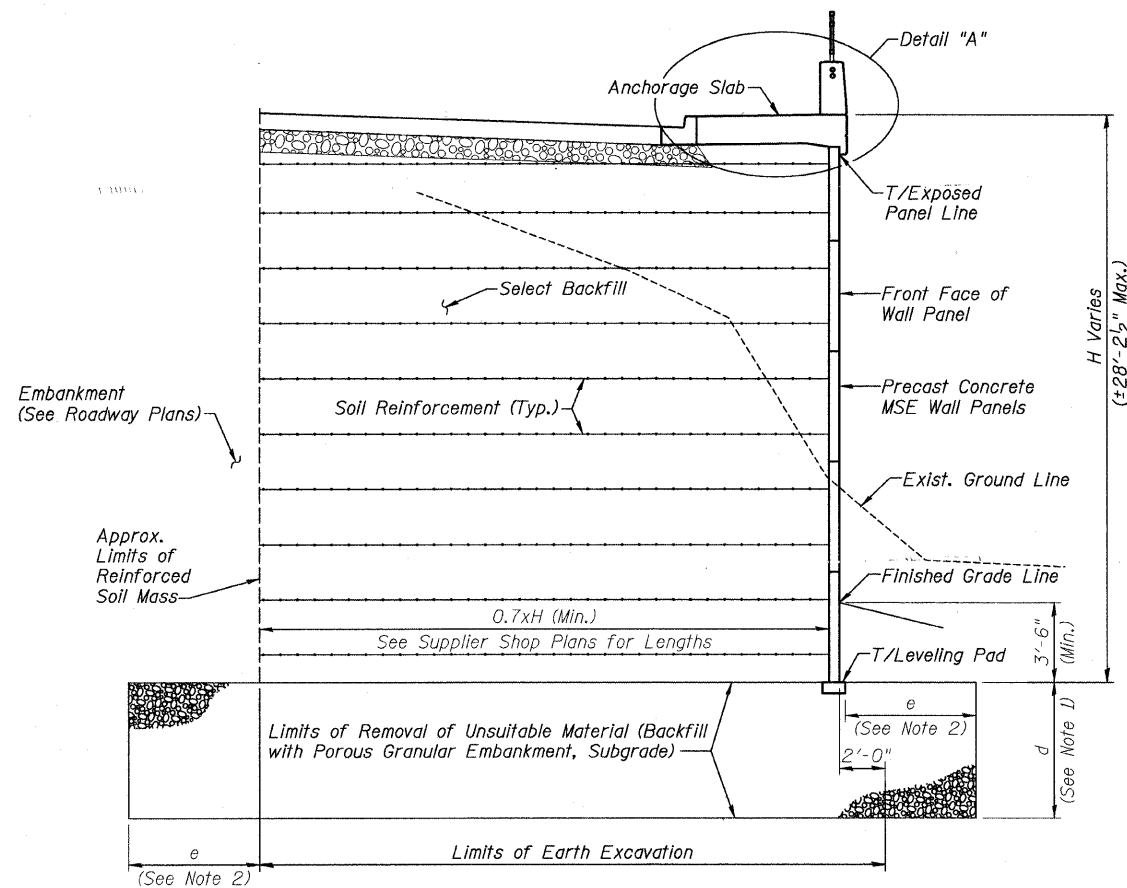
CROSS SECTION @ STA. 18+25.00



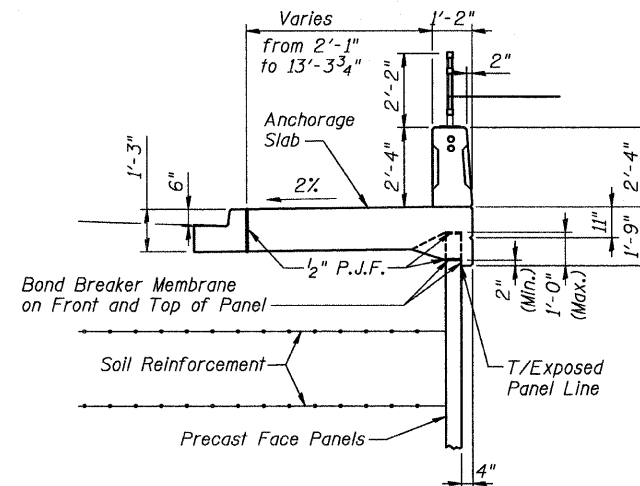
CROSS SECTION @ STA. 17+00.00

BILL OF MATERIAL

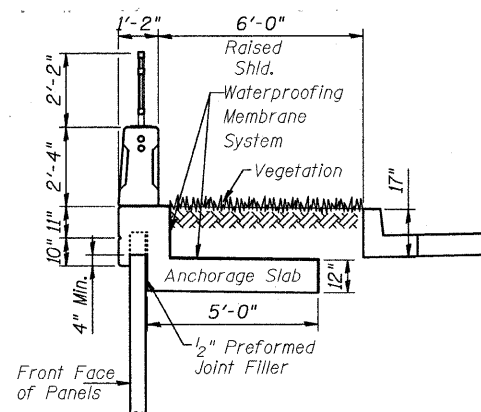
Item	Unit	Quantity
Concrete Retaining Wall Removal	Foot	508



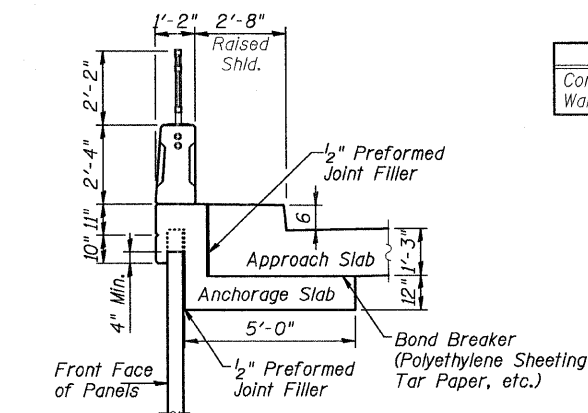
SECTION THRU MSE WALL  
(Dimensions are @ Rt. L's)



DETAIL "A"



DETAIL "B"



SECTION THRU NORTH APPROACH SLAB  
(Dimensions are @ Rt. L's)

NOTES:

- For Limits of Removal of Unsuitable Material see sheets S-26 and S-27.
- Edge distance "e" is the same as the Removal Depth "d".
- Sidewalk/Anchorage slab slope not to exceed two percent.

LEGEND

- Earth Excavation
- Select Backfill
- Removal of Unsuitable Material and Backfill with Porous Granular Embankment, Subgrade
- Concrete Removal

CITY OF WHEATON

MANCHESTER ROAD/ WESLEY STREET  
OVER UNION PACIFIC RAILROAD  
MSE RETAINING WALL  
SECTIONS

DRAWN	JM	SHEET NO.
CHECKED	VEVS	S-28
APPROVED	BSK	
DATE	06/04/2008	
SCALE	NONE	

**HDR**  
HDR Engineering, Inc.