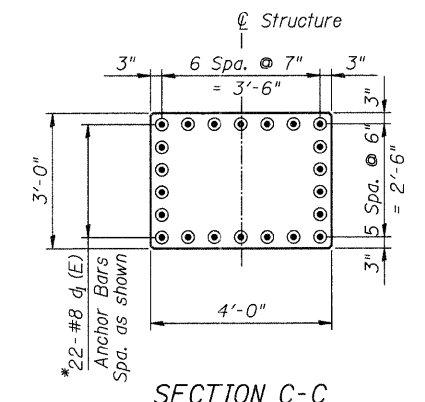
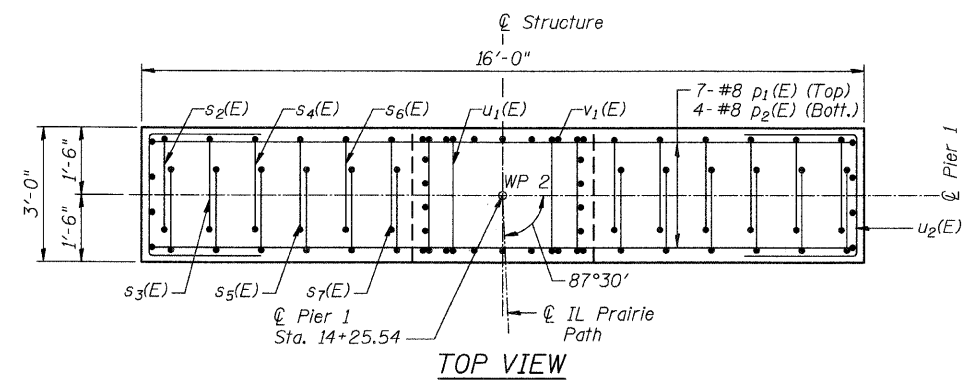
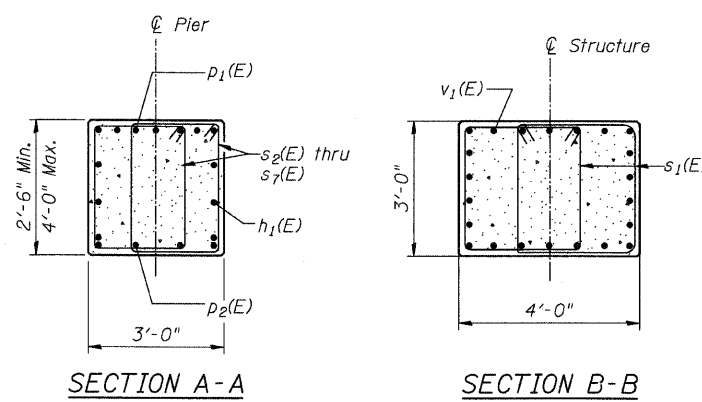


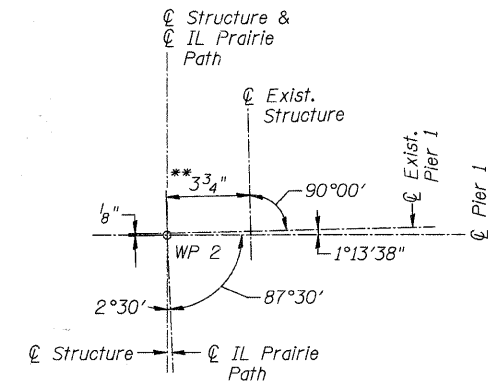
FISCAL YEAR	COUNTY	COUNTY HIGHWAY	TOTAL SHEETS	SHEET NO.
2007	DUPAGE	*	241	158
CONTRACT NUMBER 83908				
SECTION 97-00084-00-BR				
* FAU 3549/ FAU 1432				



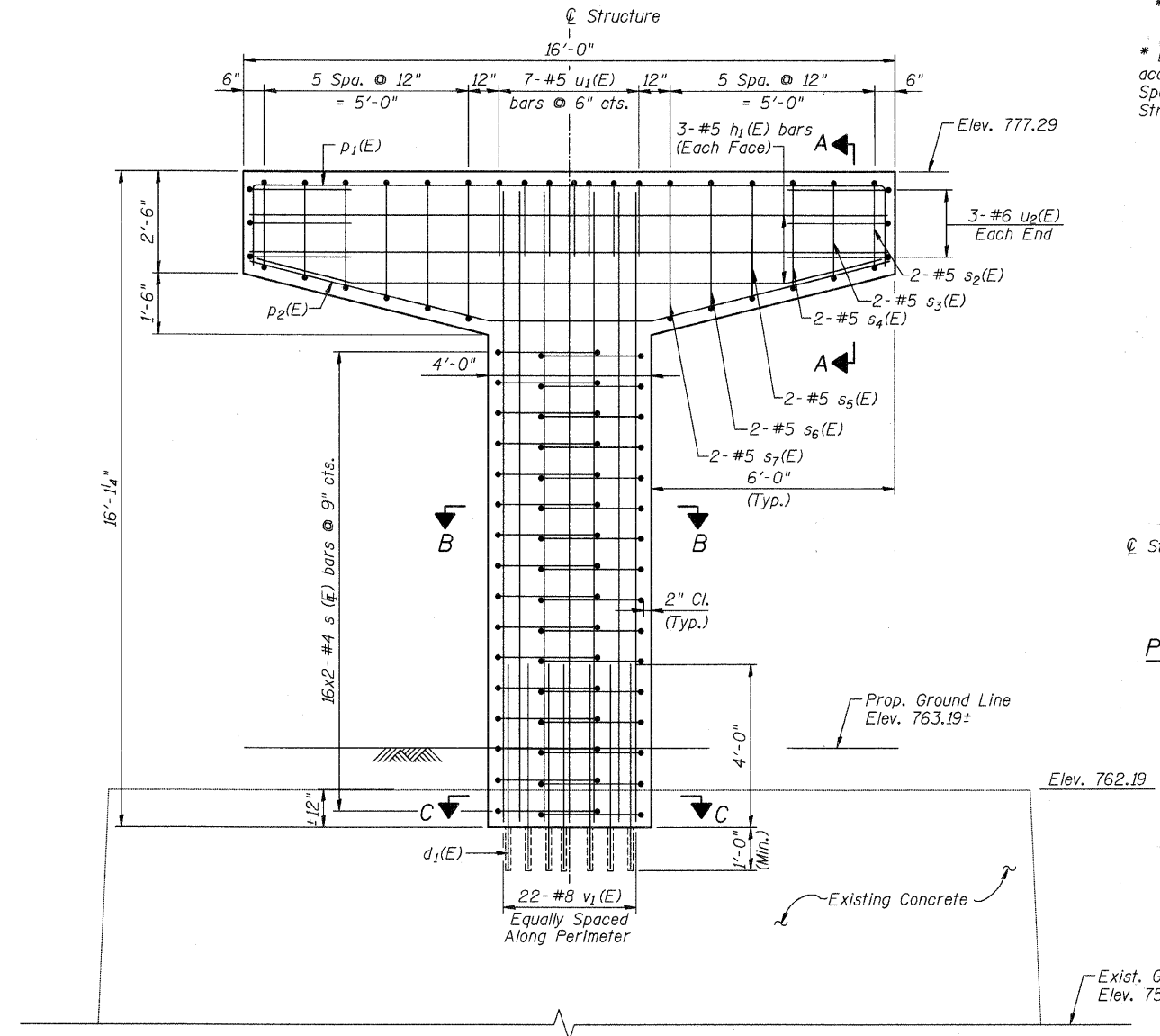
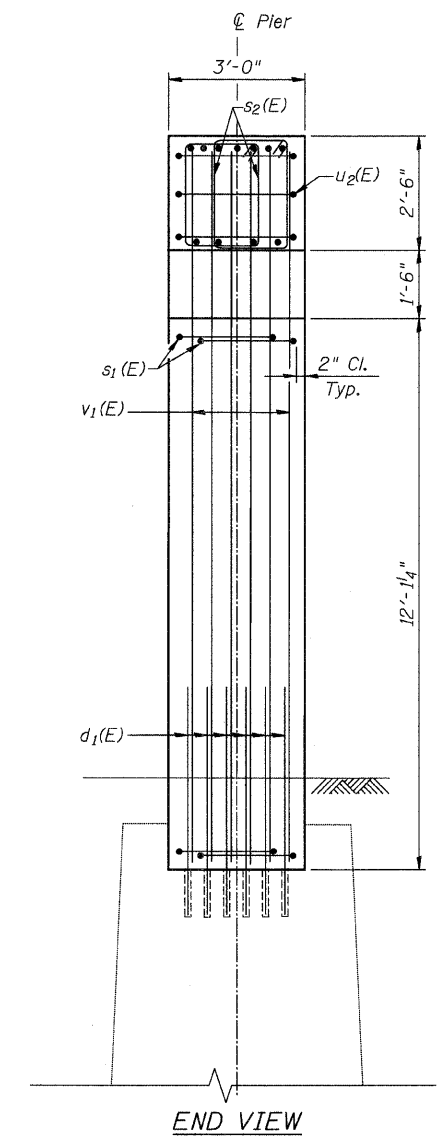
* Epoxy grout in 12" min. drilled $1\frac{1}{2}$ " ϕ holes according to Article 584 of the Standard Specifications. Cost included with Concrete Structures.

BILL OF MATERIAL

Bar	No.	Size	Length	Shape
$d_1(E)$	22	#8	5'-0"	
$h_1(E)$	6	#5	15'-8"	
$p_1(E)$	7	#8	19'-5"	
$p_2(E)$	4	#8	16'-0"	
$s_1(E)$	32	#4	11'-0"	
$s_2(E)$	4	#4	10'-6"	
$s_3(E)$	4	#4	11'-0"	
$s_4(E)$	4	#4	11'-6"	
$s_5(E)$	4	#4	12'-0"	
$s_6(E)$	4	#4	12'-6"	
$s_7(E)$	4	#4	13'-0"	
$u_1(E)$	7	#5	6'-10 $\frac{1}{2}$ "	
$u_2(E)$	6	#6	7'-7 $\frac{1}{2}$ "	
$v_1(E)$	22	#8	15'-8"	
Concrete Structures		Cu. Yd.	11.5	
Reinforcement Bars, Epoxy Coated		Pound	2,390	
Form Liner		Sq. Ft.	170	
Limestone Surface		Sq. Ft.	170	
Concrete Sealer		Sq. Ft.	48.0	

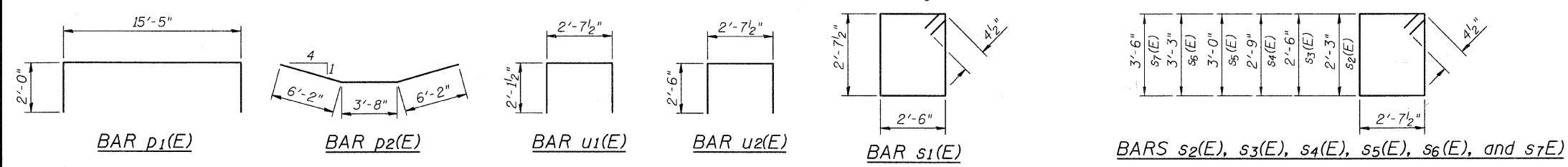


** Along Exist. Pier 1



NOTE:

For location of Bearing Anchor Bolts, see detail on Sheet IPP-9.



CITY OF WHEATON

ILLINOIS PRAIRIE PATH BRIDGE
 OVER UNION PACIFIC RAILROAD,
 FRONT STREET AND WESLEY STREET

PIER 1 MODIFICATION DETAILS

DRAWN	JM/PES/TV	SHEET NO.
CHECKED	VEVS	IPP-21
APPROVED	BSK	
DATE	06/04/2008	
SCALE	NONE	

HDR Engineering, Inc.