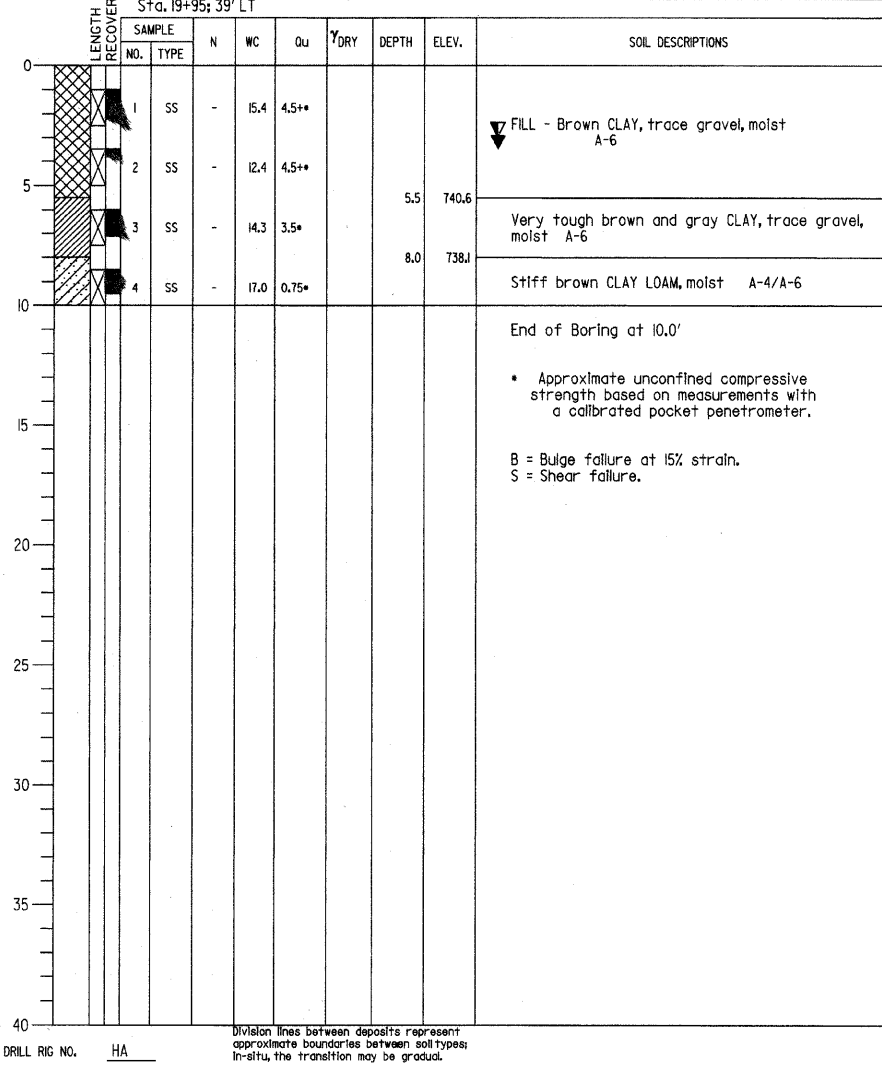


PROJECT Wesley/Manchester Bridge Replacement, Wheaton, IL
 CLIENT HDR Engineering, Inc., 8420 W. Bryn Mawr Ave., Chicago, Illinois
 BORING 8A DATE STARTED 8-14-99 DATE COMPLETED 8-14-99 JOB L-46,072

ELEVATIONS
 GROUND SURFACE 746.1
 END OF BORING 736.1

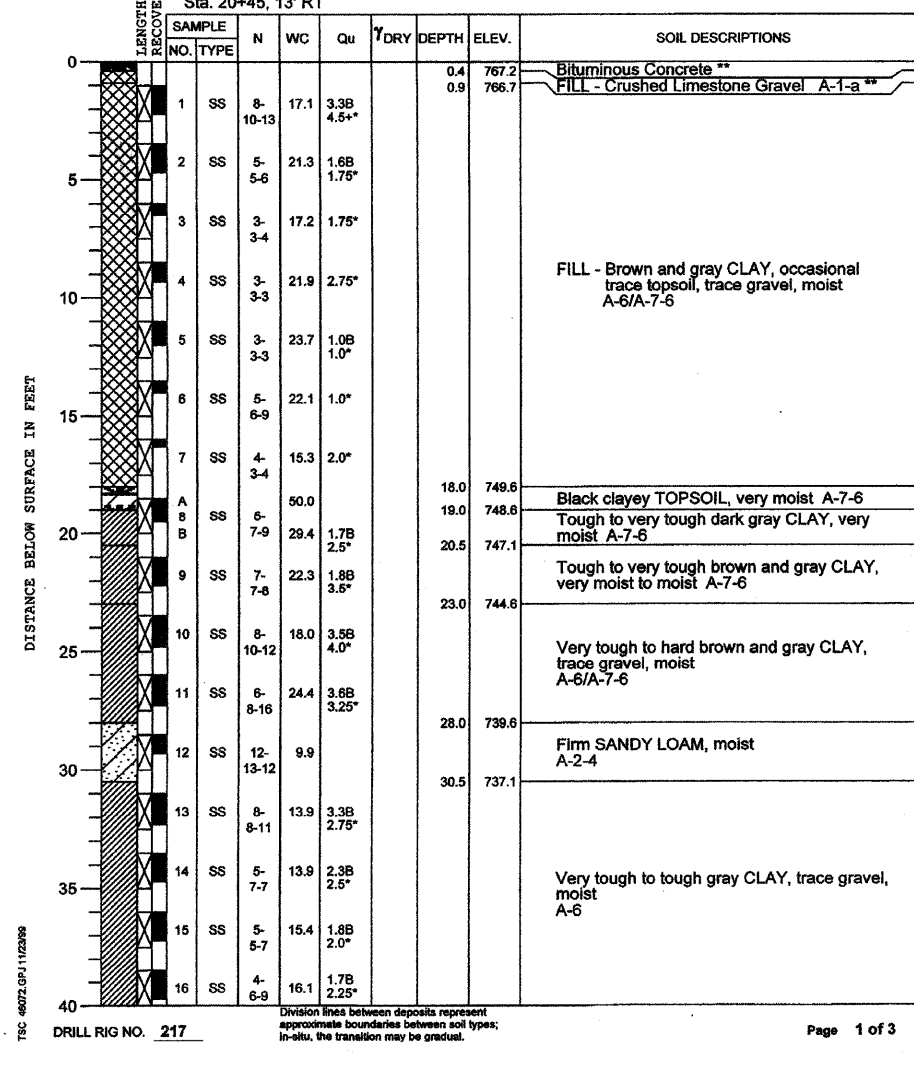
WATER LEVEL OBSERVATIONS
 WHILE DRILLING 3.0'
 AT END OF BORING 3.5'
 24 HOURS 3.5'



PROJECT Wesley/Manchester Bridge Replacement, Wheaton, IL
 CLIENT HDR Engineering, Inc., 8420 W. Bryn Mawr Ave., Chicago, Illinois
 BORING 9 DATE STARTED 9-10-99 DATE COMPLETED 9-10-99 JOB L-46,072

ELEVATIONS
 GROUND SURFACE 767.6
 END OF BORING 677.6

WATER TABLE
 WHILE DRILLING Rotary Wash
 AT END OF BORING Rotary Wash
 24 HOURS Rotary Wash

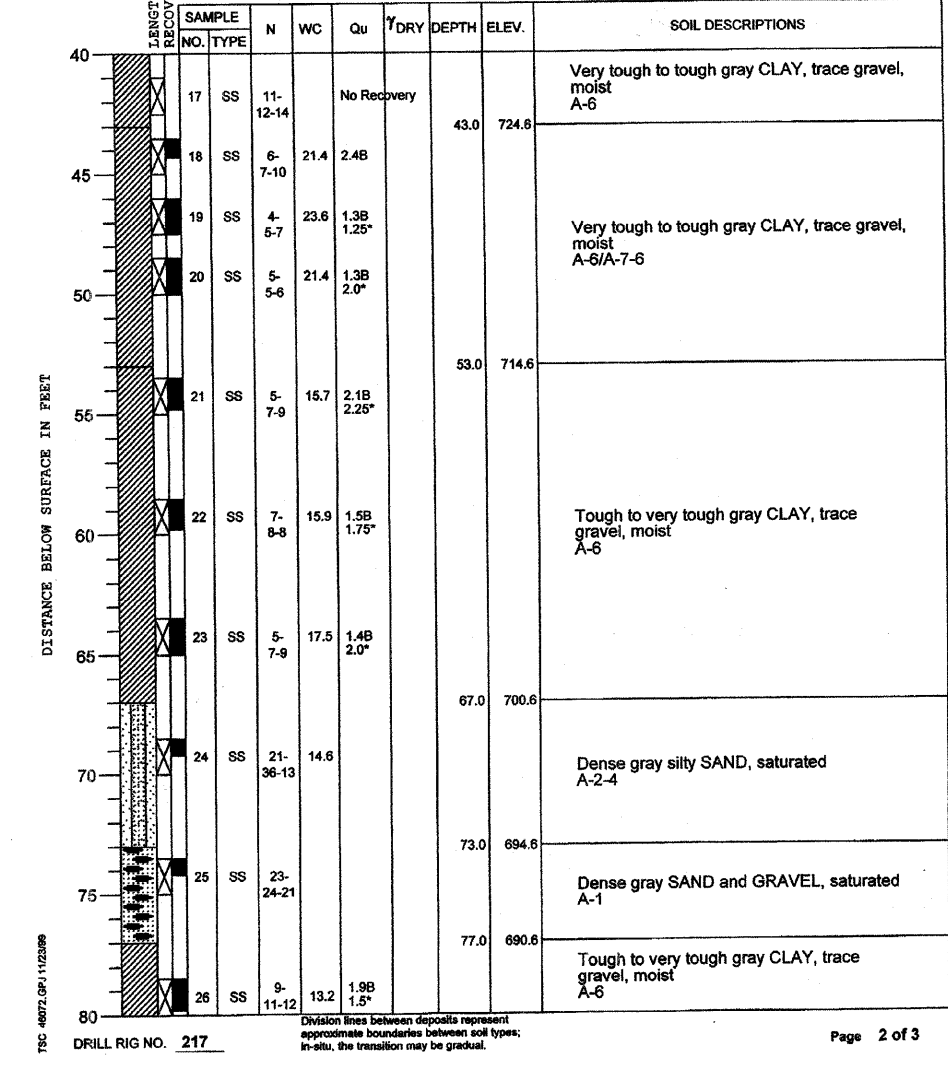


PROJECT Wesley/Manchester Bridge Replacement, Wheaton, IL
 CLIENT HDR Engineering, Inc., 8420 W. Bryn Mawr Ave., Chicago, Illinois
 BORING 9 DATE STARTED 9-10-99 DATE COMPLETED 9-10-99 JOB L-46,072



ELEVATIONS
 GROUND SURFACE 767.6
 END OF BORING 677.6

WATER TABLE
 WHILE DRILLING Rotary Wash
 AT END OF BORING Rotary Wash
 24 HOURS Rotary Wash



REVISIONS	
NAME	DATE

CITY OF WHEATON
 MANCHESTER ROAD / WESLEY STREET
 OVER UNION PACIFIC RAILROAD

SOIL BORING LOG

VERT. SCALE: 1" = 10'
 HORIZ. SCALE: 1" = 10'
 DATE: 6/4/2008

DRAWN BY ML
 CHECKED BY VS