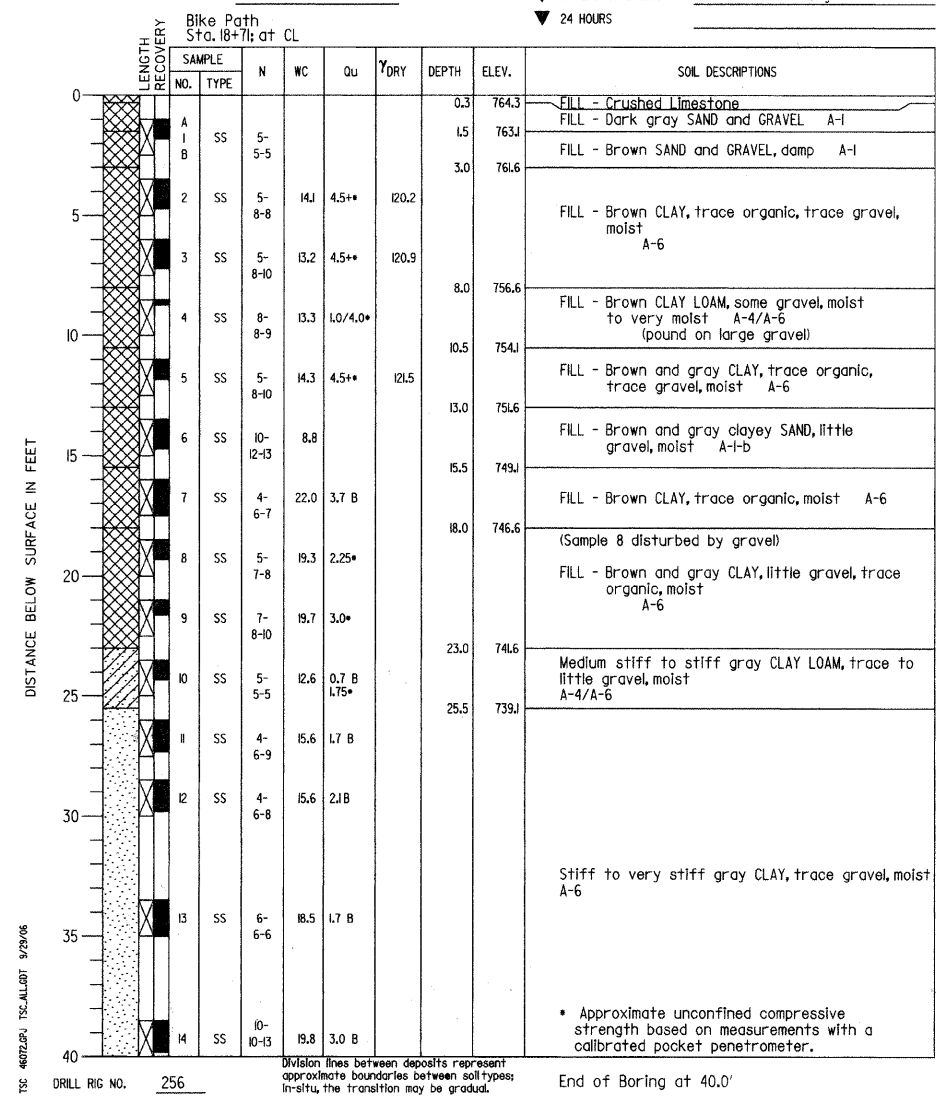


PROJECT Wesley/Manchester Bridge Replacement, Wheaton, IL
 CLIENT HDR Engineering, Inc., 8420 W. Bryn Mawr Ave., Chicago, Illinois
 BORING 27 DATE STARTED 8-23-06 DATE COMPLETED 8-23-06 JOB L-46,072
 ELEVATIONS WATER LEVEL OBSERVATIONS
 GROUND SURFACE 764.6 WHILE DRILLING Dry
 END OF BORING 724.6 AT END OF BORING Dry
 ▼ 24 HOURS



REVISIONS		CITY OF WHEATON MANCHESTER ROAD / WESLEY STREET OVER UNION PACIFIC RAILROAD SOIL BORING LOG
NAME	DATE	
		SCALE: VERT. HORIZ. DATE 6/4/2008
DRAWN BY ML CHECKED BY VS		