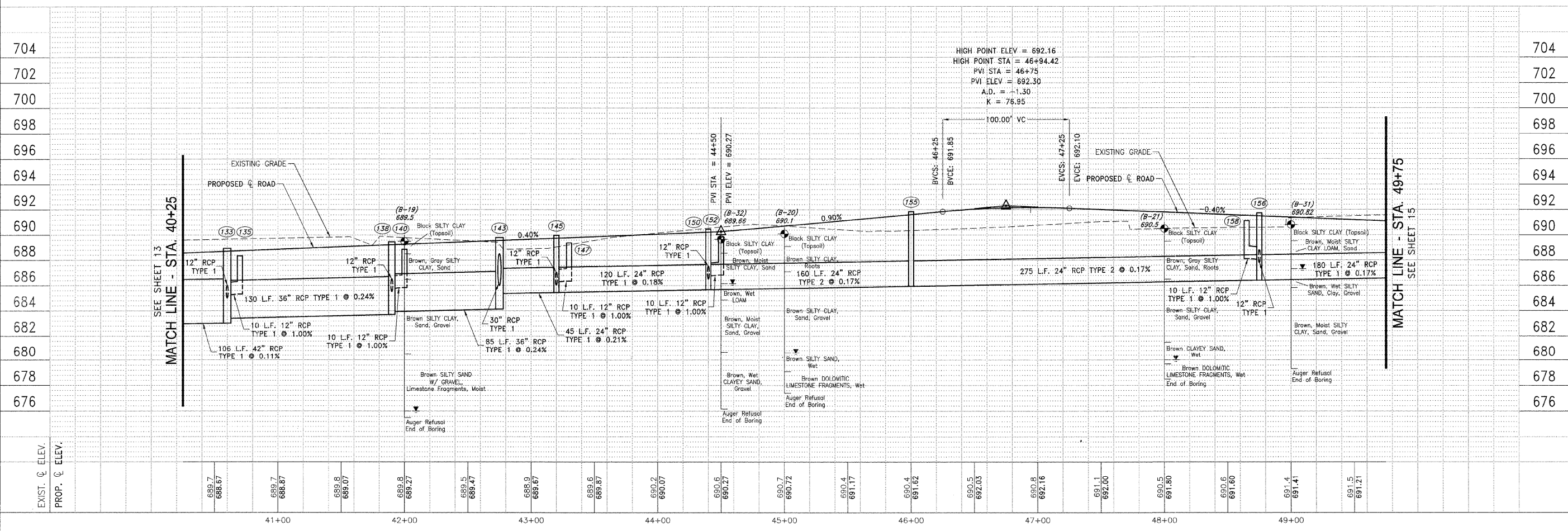
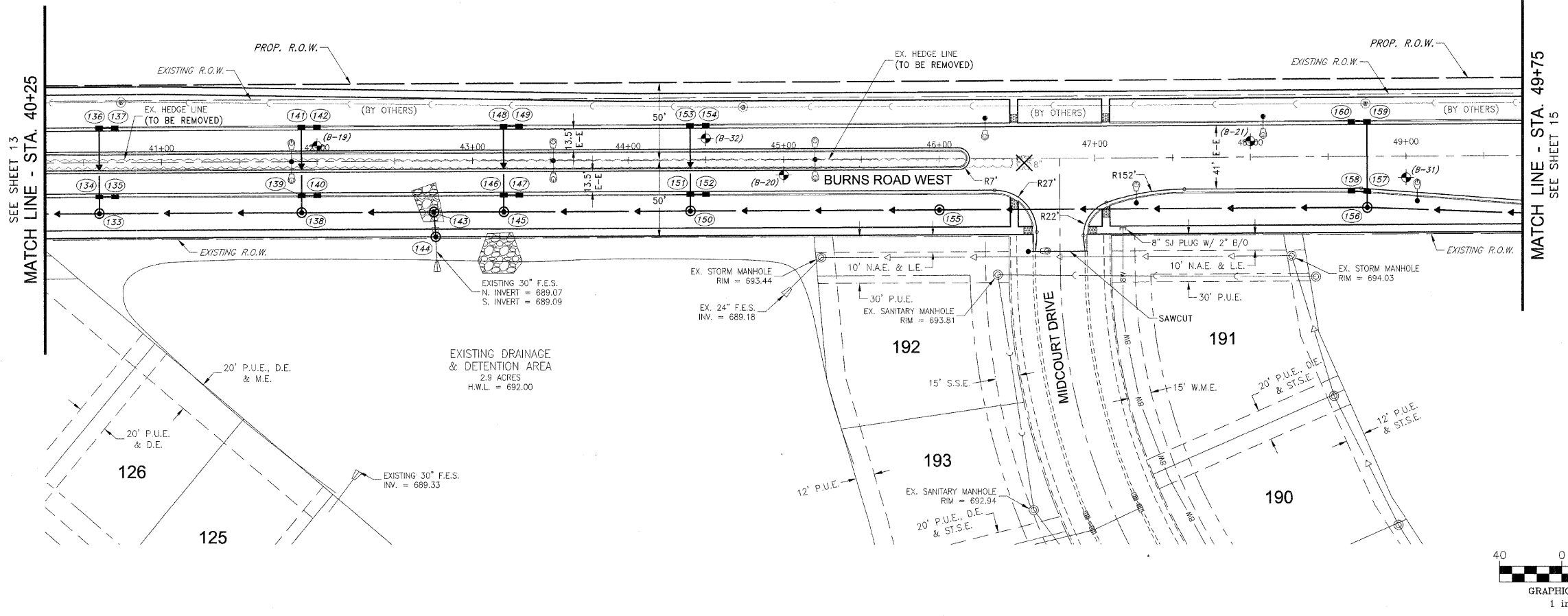


TYSON ENGINEERING, INC.
 CONSULTING CIVIL ENGINEERS
 LAND SURVEYORS
 DESIGN FIRM LICENSE # 04-001136
 367 SOUTH SCHUYLER AVENUE
 KANKAKEE, ILLINOIS 60901
 PHONE (815) 932-7406

This document and the ideas and designs incorporated herein, as an instrument of professional service, is the property of Tyson Engineering Inc. and is not to be used in whole or in part, for any other project without written authorization of Tyson Engineering Inc.
 Do not scale drawings. Use dimensions only.
 Contractor shall be responsible for verifying all dimensions.
 Information hereon and herein is confidential.

REVISIONS			
NO.	DATE	BY	DESCRIPTION
1	3/12/07	MRG	PER IDOT REVIEW
2	4/13/07	MRG	PER IDOT REVIEW
3	4/9/09	MRG	PHASING



BURNS ROAD WEST
 PLAN AND PROFILE
 STA. 40+25 TO STA. 49+75

PROPOSED IMPROVEMENTS FOR
BURNS ROAD WEST
 FROM BURNING BUSH DRIVE
 TO U.S. ROUTE 45/52

SECTION 03-00058-00-FP	
DATE: 1/29/07	JOB NO. E05055
SCALE: HORZ.: 1"=40' VERT.: 1"=4'	FILE NO.
DRAWN BY: MRG	SHEET 14
CHECKED BY: SRM	41

P:\2005\05055A.dwg\05055-PLAN&PROFILE.dwg 4/9/2009 10:45:59 AM CDT