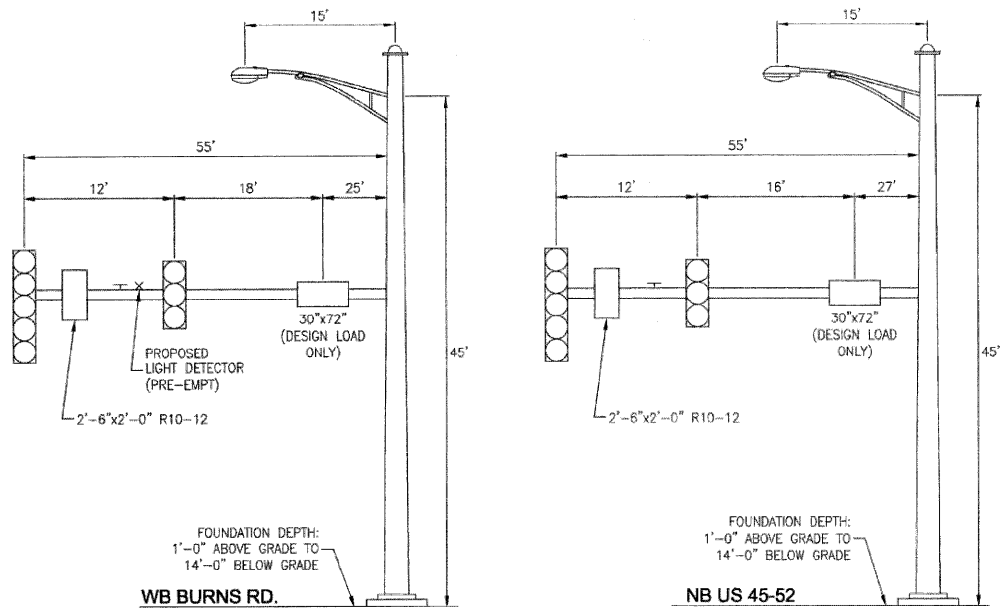
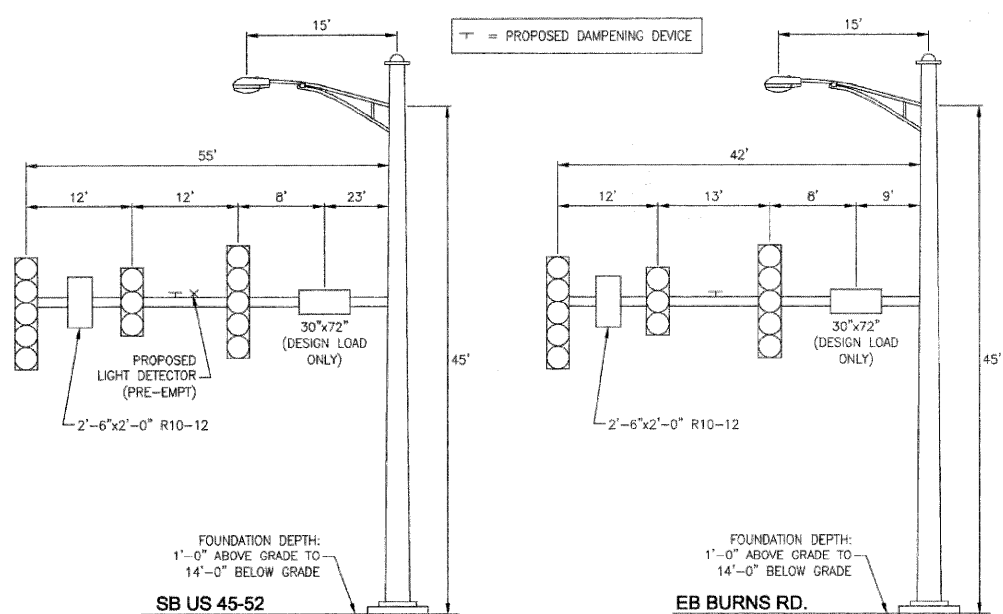


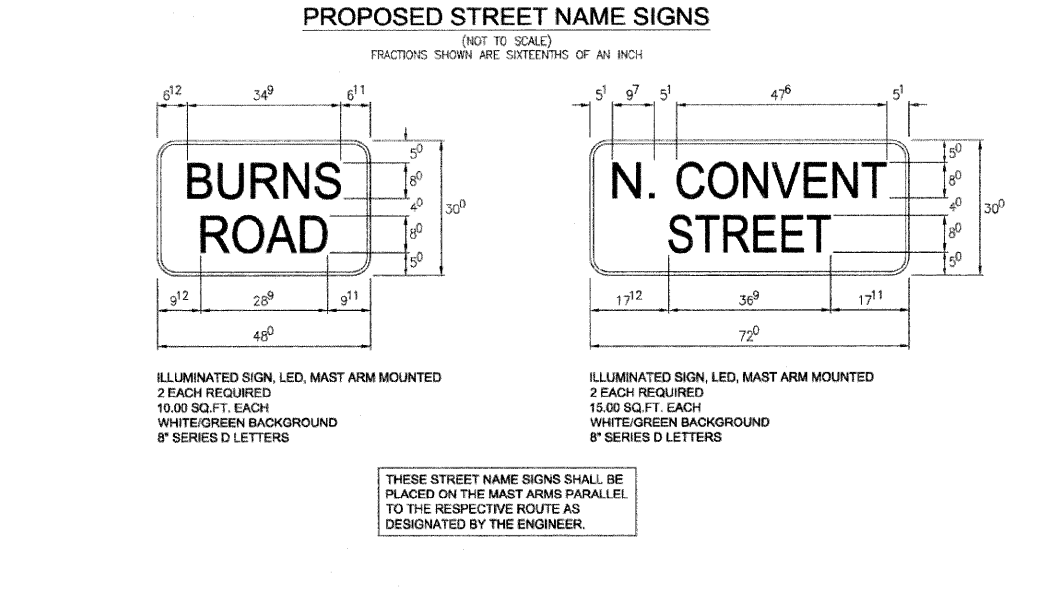
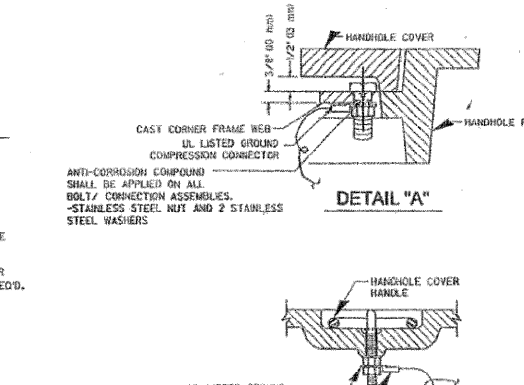
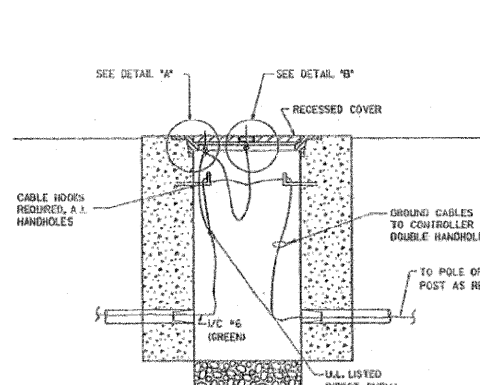
LEDS055A.dwg E05055-TRAFFIC DETAIL.dwg 6/1/2009 8:51:03 AM CDT



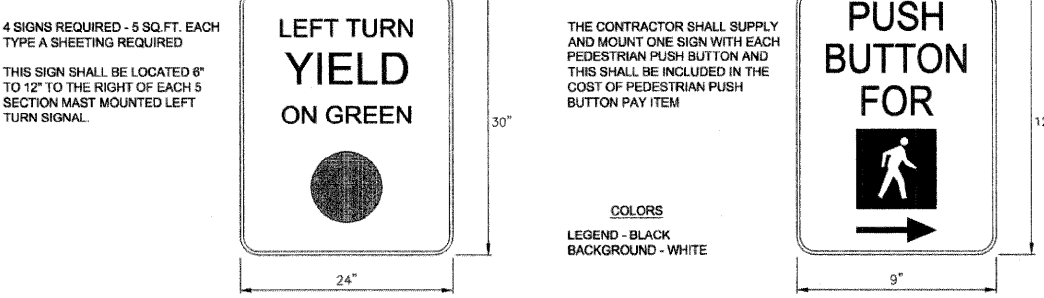
**MAST ARM LOADING DETAIL  
NW QUAD. @ US 45-52 & BURNS RD.  
(NOT TO SCALE)**



**MAST ARM LOADING DETAIL  
SW QUAD. @ US 45-52 & BURNS RD.  
(NOT TO SCALE)**



**PROPOSED STREET NAME SIGNS  
(NOT TO SCALE)  
FRACTIONS SHOWN ARE SIXTEENTHS OF AN INCH**



**PEDESTRIAN PUSH BUTTON SIGN  
TYPE R10-4B (L OR R)  
(NOT TO SCALE)**

4 SIGNS REQUIRED - 5 SQ. FT. EACH TYPE A SHEETING REQUIRED

THIS SIGN SHALL BE LOCATED 6" TO 12" TO THE RIGHT OF EACH 5 SECTION MAST MOUNTED LEFT TURN SIGNAL.

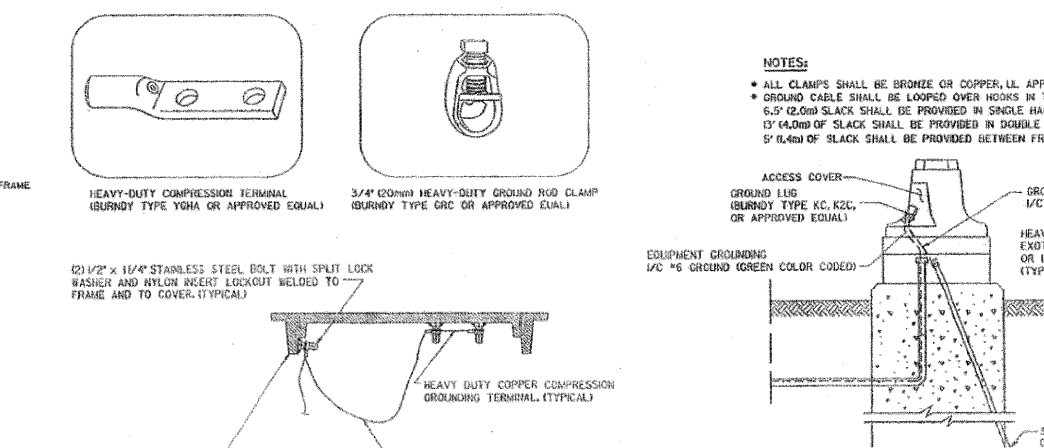
NOTES:  
ALL MAST ARM FOUNDATIONS TO BE 38" DIAMETER. THE LIGHT FIXTURE ON THE COMBINATION MAST ARM SHALL BE ATTACHED TO A 15 FOOT MAST ARM AS SHOWN ON THESE DRAWINGS. LIGHT FIXTURES ARE TO BE 400 WATT HIGH PRESSURE SODIUM. ALL LIGHTING ARMS TO BE PARALLEL TO THE SIGNAL MAST ARM.

ALL SIGNAL HEADS SHALL HAVE BACKPLATES.

THE DAMPENING DEVICE SHALL CONSIST OF A 24" X 36" TYPE 1 UNPAINTED ALUMINUM SIGN STOCK MOUNTED HORIZONTALLY ON TOP OF THE MAST ARM WITH THE 36" LENGTH PERPENDICULAR TO THE ARM. THE COST OF THE DAMPENING DEVICE IS INCLUDED IN THE MAST ARM PAY ITEM.

THE CONTRACTOR SHALL SUPPLY AND MOUNT ONE SIGN WITH EACH PEDESTRIAN PUSH BUTTON AND THIS SHALL BE INCLUDED IN THE COST OF PEDESTRIAN PUSH BUTTON PAY ITEM

COLORS  
LEGEND - BLACK BACKGROUND - WHITE



- GENERAL NOTES:**
- THE TRAFFIC SIGNAL SECTION AT THE ILLINOIS DEPARTMENT OF TRANSPORTATION SHALL BE NOTIFIED AT 815 434-8446 AT LEAST 72 HOURS PRIOR TO TURNING ON ANY FLASHER OR CONTROLLER UNITS. CONTACT TOM SCHAEFER AT THE ILLINOIS DEPARTMENT OF TRANSPORTATION AT LEAST 72 HOURS IN ADVANCE IN ORDER TO CHANGE INTERSECTION SIGNS TO SIGNAL AHEAD SIGNS.
  - ALL TRAFFIC SIGNAL HEADS SHALL BE 12-INCH POLYCARBONATE.
  - TRAFFIC SIGNAL HEADS SHALL BE PROPERLY COVERED PRIOR TO INTERSECTION TURN-ON OR AS DIRECTED BY THE ENGINEER. THIS COST SHALL BE INCLUDED WITH THE COST OF THE ASSOCIATED SIGNAL HEAD PAY ITEMS.
  - A 1/4" DIAMETER CONTINUOUS RODENT RESISTANT NYLON ROPE SHALL BE FURNISHED AND LEFT IN PLACE IN ALL CONDUITS BETWEEN HANDHOLES AND FOUNDATIONS OR CONTROLLER. THIS COST SHALL BE INCLUDED IN THE COST OF CONDUIT PAY ITEMS.
  - THE CONTRACTOR SHALL ARRANGE FOR A FACTORY OR SUPPLIER REPRESENTATIVE TO BE PRESENT AT THE INTERSECTION WHEN THE SIGNAL IS TURNED ON. COST TO BE INCLUDED WITH THE TRAFFIC SIGNAL CONTROLLER PAY ITEM.
  - NO ADDITIONAL COMPENSATION WILL BE ALLOWED FOR PLACING CONDUIT AT GREATER THAN 2' MINIMUM DEPTH TO AVOID OBSTACLES SUCH AS UNDERGROUND UTILITIES.
  - ALL MAST ARM MOUNTED SIGNAL HEADS ON AN INDIVIDUAL MAST ARM SHALL BE MOUNTED SO THAT THE RED INDICATIONS ARE LEVEL WITH EACH OTHER.
  - THE ELECTRICAL CONDUCTORS FOR ALL TRAFFIC SIGNAL HEADS SHALL BE SOLID, SOFT COPPER.
  - ALL THREADS OF BOLTS USED IN ASSEMBLY OF TRAFFIC SIGNAL COMPONENTS SHALL BE COATED WITH A NON-LEAD BASED ANTI-SEIZE COMPOUND SIMILAR TO LEAD PLATE PRIOR TO ASSEMBLY.
  - ALL AREAS DISTURBED BY THE CONTRACTOR SHALL BE RESTORED WITH SEED TO THE SATISFACTION OF THE ENGINEER.
  - ALL HARDWARE SHALL BE TIGHTENED AND WELL SECURED. CABLES SHALL BE NEATLY WOUND IN HANDHOLES. CABLES SHALL BE NEATLY TRAINED IN THE CONTROLLER CABINET.
  - ALL SIGNAL BASES SHALL BE LOCATED A MINIMUM OF 6' FROM THE FACE OF CURB UNLESS OTHERWISE DIRECTED BY THE ENGINEER.
  - ALL NEW TRAFFIC AND PEDESTRIAN SIGNAL WIRING SHALL EXTEND FROM CONTROLLER TO SIGNAL. SPLICES IN JUNCTION BOXES OR HANDHOLES WILL NOT BE ALLOWED.
  - LOOPS IN SAME LANE SHALL BE WOUND CLOCKWISE & COUNTERCLOCKWISE IN ALTERNATING ORDER. LOOPS IN ADJACENT LANES SHALL BE WOUND ALL THE SAME.
  - THE PROPOSED TRAFFIC SIGNAL CONTROL CABINET SHALL BE FURNISHED WITH A MANUAL CONTROL SWITCH AND MANUAL CONTROL CORD WITHIN THE POLICE DOOR COMPARTMENT AS INCIDENTAL TO THE CONTROL CABINET PAY ITEM. A SELF ADHERING PHASING DIAGRAM SHALL BE PLACED INSIDE THE CABINET DOOR.
  - THE CONTRACTOR SHALL BE RESPONSIBLE FOR OBTAINING ELECTRICAL SERVICE FOR THE TRAFFIC SIGNAL AND STREET LIGHTING. THE CONTRACTOR SHALL CONTACT THE UTILITY COMPANY PRIOR TO BEGINNING WORK TO OBTAIN THE UTILITY COMPANY REQUIREMENTS FOR THE SERVICE INSTALLATION.
  - ALL DETECTOR LOOP AMPLIFIERS SHALL BE CARD RACK MOUNTED AND FURNISHED WITH PLASTIC TAGS LABELED WITH RESPECTIVE PHASES AND DIRECTION AS LISTED IN THE DETECTOR LOOP CHART. MINIMUM TAG SIZE OF 3/8" X 3/4". TAGS SHALL BE MADE OF MATERIAL THAT DOES NOT ALLOW WRITING TO FADE OVER TIME.
  - THE LENGTH OF DETECTOR LOOP CABLE FROM THE CURB TO THE JUNCTION BOX OR HANDHOLE IS INCIDENTAL TO THE DETECTOR LOOP PAY ITEM.
  - DOUBLE BREAKAWAY FUSED FUSE HOLDERS AND SURGE ARRESTORS ARE TO BE SUPPLIED AND INSTALLED BY THE CONTRACTOR IN THE BASE OF THE COMBINATION MAST ARMS AS INCIDENTAL TO THE LIGHT FIXTURE PAY ITEM.
  - THE CONTROLLER CABINET SHALL BE PLACED SO THAT A TECHNICIAN CAN SEE THE INTERSECTION OVER THE TOP OF THE CABINET WHILE WATCHING THE COMPONENTS OF THE CABINET.
  - BACKPLATES SHALL BE POLYCARBONATE WITH DEEP BACK FLANGES.
  - THE CONTROLLER SHALL BE TS1 AND TS2 COMPATIBLE.
  - ALL GROUNDING MATERIALS FOR TRAFFIC SIGNAL CONCRETE FOUNDATIONS SHALL REFER TO SECTION 806 IN THE STANDARD SPECIFICATIONS FOR ROAD AND BRIDGE CONSTRUCTION ADOPTED JANUARY 1, 2007.
  - THE ELEVATION OF THE TOP OF THE DOUBLE HANDHOLE SHALL BE LESS THAN THE ELEVATION OF THE TOP OF THE CONTROLLER FOUNDATION.
  - LABEL DIRECTION AND ASSIGNMENT NUMBER ON FIBER OPTIC CABLE.
  - A SELF ADHERING PHASING DIAGRAM SHALL BE PLACED INSIDE THE CABINET DORR.
  - ALL PEDESTRIAN PUSH BUTTONS SHALL BE "BULLDOG" A MODEL MADE BY "EAGLE".
  - STEEL COMBINATION MAST ARM ASSEMBLY AND POLE TO INCLUDE 15' TRUSS ARM FOR LUMINAIRE (SEE LIGHTING DETAIL).
  - ALL UNINTERRUPTIBLE POWER SUPPLIES SHALL BE EQUIPPED WITH ALPHA GUARD MONITORS.

FALL	SECTION	COUNTY	TOTAL SHEETS	SHEET NO.
**	**	KANKAKEE	41	20

CONTRACT NO. 87414

FED. ROAD DIST. NO. ILLINOIS FED. AID PROJECT

\* BURNS ROAD WEST - FAU 6212  
\*\* 03-00058-00-PP

**TYSON ENGINEERING, INC.**  
CONSULTING CIVIL ENGINEERS  
LAND SURVEYORS  
DESIGN FIRM LICENSE #104-001136  
367 SOUTH SCHUYLER AVENUE  
KANKAKEE, ILLINOIS 60901  
PHONE (815) 932-7406

This document and the ideas and designs incorporated herein, as an instrument of professional service, is the property of Tyson Engineering Inc. and is not to be used in whole or in part, for any other project without written authorization of Tyson Engineering Inc.

Do not scale drawings. Use dimensions only.  
Contractor shall be responsible for verifying all dimensions.  
Information herein and herein is confidential.

REVISIONS				
NO.	DATE	BY	DESCRIPTION	
1	3/12/07	MRG	PER IDOT REVIEW	
2	4/13/07	MRG	PER IDOT REVIEW	
3	4/9/09	MRG	PHASING	

TRAFFIC SIGNAL DETAILS

PROPOSED IMPROVEMENTS FOR  
**BURNS ROAD WEST**  
FROM BURNING BUSH DRIVE  
TO U.S. ROUTE 45/52

SECTION  
03-00058-00-PP

DATE:	1/29/07	JOB NO.	E05055
SCALE:	N/A	FILE NO.	