

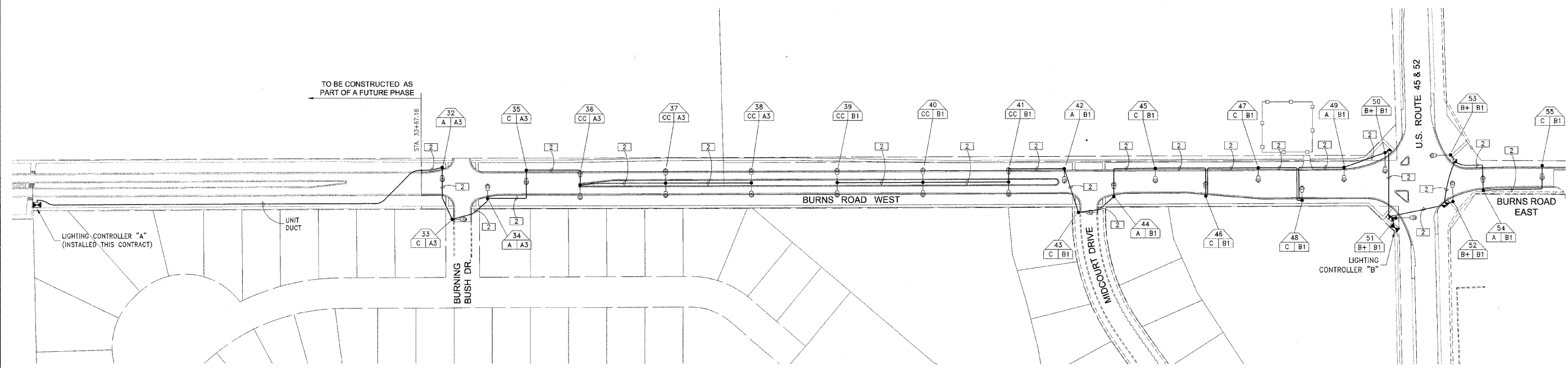
FALL PTE.	SECTION	COUNTY	TOTAL SHEETS	SHEET NO.
*	**	KANKAKEE	41	25

CONTRACT NO. 87414  
 FED. ROAD DIST. NO. ILLINOIS FED. AID PROJECT  
 \* BURNS ROAD WEST - FAU 8212  
 \*\* 03-00058-00-PP

**TYSON ENGINEERING, INC.**  
 CONSULTING CIVIL ENGINEERS  
 LAND SURVEYORS  
 DESIGN FIRM LICENSE #184-001136  
 367 SOUTH SCHUYLER AVENUE  
 KANKAKEE, ILLINOIS 60901  
 PHONE (815) 932-7406

This document and the ideas and designs incorporated herein, as an instrument of professional service, is the property of Tyson Engineering Inc. and is not to be used in whole or in part, for any other project without written authorization of Tyson Engineering Inc.  
 Do not scale drawings. Use dimensions only.  
 Contractor shall be responsible for verifying all dimensions.  
 Information hereon and herein is confidential.

REVISIONS			
NO.	DATE	BY	DESCRIPTION
1	3/12/07	MRG	PER IDOT REVIEW
2	4/13/07	MRG	PER IDOT REVIEW
3	4/9/09	MRG	PHASING



LUMINAIRE SCHEDULE							
SYMBOL	QTY	LABEL	ARRANGEMENT	DESCRIPTION	LAMP WATTAGE	ARM LENGTH	MOUNTING HEIGHT
●—○	6	A	SINGLE	HBS-250HPS-MC2	ONE (1) 250W	10'	33'
	4	B+	SINGLE*	HBM-400HPS-MC2	ONE (1) 400W	15'	45'
	8	C	SINGLE	HBS-150HPS-MC2	ONE (1) 150W	10'	33'
●—○—○	0	AA	BACK-BACK	HBS-250HPS-MC2	TWO (2) 250W	10'	33'
	6	CC	BACK-BACK	HBS-150HPS-MC2	TWO (2) 150W	10'	33'

\*COMBINATION ARM ON TRAFFIC POLE

CONTROLLER: **A**  
 VOLTAGE: 240/120V, 1 PHASE, 3 WIRE  
 MAINS: 100A MAIN BREAKER  
 CONTACTOR: 100A/2P  
 22KAIC SERIES RATED  
 MOUNTING: GROUND, 50"H X 34"W X 20"D (NOM)  
 FEEDER: 1-1/4" C-3#5

CKT NO.	LOAD DESCRIPTION	C/B	LOAD VA	
			L1	L2
1	LTS: POLES 26,24,22,20,18	30A/2P	2520	2520
2	LTS: POLES 16,14,12,10,9,6,4,2	30A/2P	2515	2515
3	LTS: POLES 25,23,21,19,17	30A/2P	2376	2376
4	LTS: POLES 15,13,11,8,7,5,3,1	30A/2P	-	-
5	-	-	-	-
6	-	-	-	-
TOTAL KVA PER PHASE			7.4	7.4
TOTAL (KVA)			14.8	
MAX AMPS			62	

CONTROLLER: **B**  
 VOLTAGE: 240/120V, 1 PHASE, 3 WIRE  
 MAINS: 60A MAIN BREAKER  
 CONTACTOR: 60A/2P  
 22KAIC SERIES RATED  
 MOUNTING: GROUND, 50"H X 34"W X 20"D (NOM)  
 FEEDER: 3/4" C-3#6

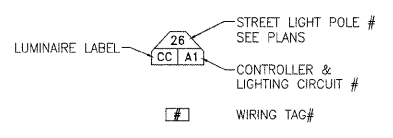
CKT NO.	LOAD DESCRIPTION	C/B	LOAD VA	
			L1	L2
1	LTS: POLES 51-55, 50-39	40A/2P	3168	3168
2	-	-	-	-
3	-	-	-	-
TOTAL KVA PER PHASE			3.2	3.2
TOTAL (KVA)			6.4	
MAX AMPS			27	

- GENERAL NOTES:**
- ALL LIGHTING FIXTURES ARE 240VAC.
  - ALL LAMPS ARE HIGH PRESSURE SODIUM.

WIRING SCHEDULE			
TAG	CONDUIT	LTG WIRE	GRD WIRE
1	2"	4#2	1#2
2	2"	2#4	1#4
UNIT DUCT		2#4	1#4

\*NOT IN THIS PHASE

**SYMBOL LEGEND**



LIGHTING INSTALLATION DETAILS

PROPOSED IMPROVEMENTS FOR  
**BURNS ROAD WEST**  
 FROM BURNING BUSH DRIVE  
 TO U.S. ROUTE 45/52

SECTION  
 03-00058-00-PP

DATE: 1/29/07	JOB NO. E05055
SCALE: HORZ.: 1"=100' VERT.: N/A	FILE NO.
DRAWN BY: MRG	SHEET
CHECKED BY: SRM	<b>25</b>
	41

P:\2005\ED05055A.dwg E05055-BASE-TCPO.dwg 5/26/2009 10:21:46 AM CDT